



---

**TOPIC:** Overview of Undergraduate Enrollment, Persistence, and Success at the University System of Maryland

**COMMITTEE:** Finance

**DATE OF COMMITTEE MEETING:** March 27, 2014

**SUMMARY:** Two annual reports are included under this cover and will be discussed as part of this topic:

- *Retention and Graduation Rates of First-time Full-time Degree Seeking Undergraduates;* and
- *Transfer Students to the University System of Maryland: Patterns of Enrollment and Success*

When looked at as a whole, the two reports provide a useful overview of undergraduate enrollment within the USM, including the various pipelines that feed undergraduate enrollment, student success and persistence after enrollment, and, in the end, bachelor degree attainment.

*Retention and Graduation Rates of First-time Full-time Degree Seeking Undergraduates* examines the level of academic success—as measured by retention and graduation rates—achieved by first-time, full-time students at USM institutions. Key trends in student enrollment and success are broken out and analyzed at both the institutional and Systemwide level.

The second report, *Transfer Students to the University System of Maryland: Patterns of Enrollment and Success*, examines progress within this increasingly important pipeline for enrollment growth. Institutional enrollment and success trends among the transfer population are analyzed and displayed, including changes in the proportion of transfer students to first-time students on USM campuses. Key factors that contribute to transfer success, such as credit attainment prior to transfer or full-time attendance, are also analyzed. Finally, data showing the level of success Maryland Community College transfer students are having at USM's regional centers at Shady Grove and Hagerstown are analyzed.

**ALTERNATIVE(S):** This item is presented for information purposes.

**FISCAL IMPACT:** This item is presented for information purposes.

**CHANCELLOR'S RECOMMENDATION:** This item is presented for information purposes.

---

COMMITTEE RECOMMENDATION:

DATE:

---

BOARD ACTION:

DATE:

---

SUBMITTED BY: Joseph F. Vivona (301) 445-1923

---





# **RETENTION AND GRADUATION RATES OF FIRST-TIME FULL-TIME DEGREE- SEEKING UNDERGRADUATES**

*Bowie State University (BSU)*  
*Coppin State University (CSU)*  
*Frostburg State University (FSU)*  
*Salisbury University (SU)*  
*Towson University (TU)*  
*University of Baltimore (UB)*  
*University of Maryland, Baltimore County (UMBC)*  
*University of Maryland, College Park (UMCP)*  
*University of Maryland, Eastern Shore (UMES)*

**Office of the Chief Operating Officer and  
Vice Chancellor for Administration and Finance  
University System of Maryland Office  
March 2014**

# Retention and Graduation Rates of First-Time Full-Time Degree-Seeking Undergraduates

## Background:

This report provides progression and degree outcome information for a specific population of USM students: new, first-time, full-time freshmen. These are most commonly referred to as our “traditional students,” and represent the student population most often referred to when higher education enrollment, retention, and graduation data are discussed. While new first-time, full-time freshmen only comprise about a third of all new students matriculating at USM institutions, they have an outsized impact on our System and its institutions because they drive reporting for most federal and state retention and graduation rates, as well as a host of other measures used by the various national ranking systems. For the USM, this population of students also figures heavily in the System’s ability to meet many of its strategic plan goals, including degree completion, STEM production, and achievement gap reduction.

The data provided in this report are for freshmen who entered USM institutions in the fall semesters between 1992 and 2012. Second-, third-, and fourth-year retention rates as well as fourth-, fifth-, and sixth-year graduation rates are reported for the following groups: all USM students, USM African-American students, USM Hispanic students, and USM Pell Grant recipients. A set of tables in the Appendix shows the rates for the USM as a whole and for each institution separately.

The graduation and retention rates for all first-time, full-time, degree-seeking freshmen who enrolled at the following University System of Maryland (USM) institutions are included: Bowie State University (BSU); Coppin State University (CSU); Frostburg State University (FSU); Salisbury University (SU); Towson University (TU); University of Maryland, Baltimore County (UMBC); University of Maryland, College Park (UMCP); and University of Maryland Eastern Shore (UMES). The University of Baltimore (UB) admitted its first freshmen class in fall 2007 and is included in the System cohort beginning that year. UB campus retention is included, with four years of retention data now available as well as the first 6-year graduation rate. The University of Maryland, Baltimore and University of Maryland University College are not included in this report due to their unique institutional missions.

Retention and graduation rates are reported for those students re-enrolling at or graduating from any USM institution, and for USM students re-enrolling at or graduating from their institution of initial entry. This report does not reflect changes to student cohorts from eligible exclusions and student ID changes, and may not align with the official calculations of each campus. The rates also do not account for students who may have transferred or graduated from an institution outside USM.

This analysis was prepared by combining data collected each fall semester on students who are enrolled at USM institutions with data collected each year on degrees and financial aid awarded. The USM, in conjunction with the Maryland Higher Education Commission, collects these data through the Enrollment Information System, Degree Information System, and Financial Aid Information System files submitted by each USM institution. For further information, please contact Chad Muntz, [cmuntz@usmd.edu](mailto:cmuntz@usmd.edu) (301-445-2737).

## Trends in Retention and Graduation Rates:

*Second-Year Retention Rate.* The second-year retention rate of USM freshmen (at institution of initial entry) held at 84% for the fall 2012 cohort. However, this overall rate masks the variation in second-year retention rates that exists across USM institutions. Institutions with increased rates from last year included Frostburg (77%), Towson (86%), UMBC (85%), and UMCP (94%). Bowie (70%) decreased

## **Retention and Graduation Rates of First-Time Full-Time Degree-Seeking Undergraduates**

one percentage points; Coppin (60%) decreased four points, SU (79%) decreased three points, UB (67%) decreased five percentage points; and UMES (66%) decreased by two percentage points.

When examined by population, performance on second-year retention rates across the USM was mixed. The second-year retention rate of African-American USM freshmen decreased by one percentage point (to 77%) for 2012, and the rate for USM Hispanic students decreased by three percentage points (to 84%) in 2012, a rate equal to that for all USM students. However, the rate for USM low income students (i.e., Pell Grant recipients) increased one percentage point to 79% (five percentage points below the average for all USM students).

*Six-Year Graduation Rate.* The most recent graduating cohort, the fall 2007 cohort, represented 12,893 new, first-time, full-time freshmen, an increase of 400 new freshmen over the previous year. The six-year graduation rate for that cohort increased two percentage points (to 62%) at the “Institution of Initial Entry,” and also increased one percentage point (to 66%) if the definition is expanded to include graduating “Anywhere within the USM” (for comparison purposes, the national standard used to measure progress in the USM Dashboard indicators is 55%).

The overall six-year graduation rate of 66% for “Anywhere within the USM” masks significant differences between student populations. For instance, while the six-year graduation rate increased for all first-time, full-time USM student populations, it decreased for Pell Grant recipients (-1%), and increased (+5%) for first-time, full-time Hispanic students (rising to 70%). For first-time, full-time African-American students graduating from any USM institution, the six-year graduation rate increased by one percentage point to 47%.

The rates also varied by institution. Institutions that increased six-year graduation rates at the institution of initial entry (comparing fall 2007 cohort to fall 2006 cohort) included Frostburg (47%), UMBC (62%), UMCP (82%), and UMES (32%). The two institutions that experienced decreased graduation rates were Coppin (with a three percentage point drop to 13%) and Salisbury (with one percentage point to 66%). Bowie (35%) and Towson (64%) remained unchanged. The University of Baltimore’s first six-year graduation rate was 36%.

### Impact on USM Initiatives

Finally, in considering retention and graduation rates it is important also to remember the impact that the first-time, full-time new freshmen cohorts have on USM strategic goals. These students have some of the highest graduation rates and proceed from matriculation to graduation in the shortest amount of time. Continued improvements in their level of success, such as by closing achievement gaps that exist among various population groups within the first-time, full-time cohort, will be critical if the USM is to achieve the level of degree production necessary for Maryland to meet its 55% degree attainment goal (the USM's degree target under the state goal is the production of at least 28,000 bachelor's degrees per year by 2020). Outside of closing the gaps in achievement that currently exist in the pipeline of new first-time, full-time students, increased degree production will require enrollment growth.

## APPENDIX

In compliance with the federal Office of Management and Budget new 1997 Federal Reporting Standards required to be in use by the 2010-2011 Academic Year, the race/ethnicity data collection and reporting categories changed to separate the identification of race and ethnicity, separate Native Hawaiian/Other Pacific Islander and Asian into two distinct race categories, and allow for self-identification of multiple races. Institutions varied in their use of re-surveying and mapping techniques to populate data for the new race/ethnicity categories beginning in fall 2010. These changes are expected to result in the variability of subgroup graduation rates for institutional, state and federal reporting due to, but not limited to, the following factors:

- Campus differences in reporting students' new race/ethnicity changes to entering student cohorts prior to fall 2010
- Lack of comparable data available and changes in trends at the state and federal level due to the new race/ethnicity categories.
- Lack of a common standard of how to count students who report multiple races – in one omnibus, multiple race/ethnicity category, in many distinct multiple race/ethnicity categories (e.g. African-American & White; American Indian & Asian, etc.), or duplicated within the existing race/ethnicity categories (e.g., a person that reported white & African-American would be reported in each subgroup).
- Students who self-identified changed after the re-survey with the new race/ethnicity categories.

Specifically for USM, new race/ethnicity data prior to fall 2010 were not available. For fall 2010, the subgroup race/ethnicity tables that follow include only single race students. This was the first cohort affected by the new standards, and as trend data become available, the reporting of USM racial retention and graduation rates may be updated or expanded.

**Table 1a**  
**University System of Maryland**  
**Retention and Graduation Rates**  
**First-Time, Full-Time, Degree-Seeking Freshmen Entering in the Fall Semester**

Cohort Year	Cohort Size	Institution of First-Time Entry							Anywhere in the USM						
		Retention Rates			Graduation Rates			Enrolled 7th Year	Retention Rates			Graduation Rates			Enrolled 7th Year
2nd Yr	3rd Yr	4th Yr	4-year	5-year	6-year	2nd Yr	3rd Yr		4th Yr	4-year	5-year	6-year			
1992	8,058	81%	69%	63%	25%	48%	55%	4%	82%	73%	68%	26%	51%	59%	7%
1993	8,263	79%	67%	62%	25%	48%	54%	4%	82%	72%	68%	26%	51%	59%	6%
1994	8,797	79%	67%	62%	27%	50%	56%	4%	81%	72%	68%	28%	53%	60%	6%
1995	9,226	81%	69%	64%	30%	52%	57%	4%	84%	74%	71%	31%	55%	62%	7%
1996	9,615	81%	70%	65%	30%	52%	58%	3%	83%	75%	71%	31%	55%	62%	6%
1997	10,040	82%	71%	67%	33%	56%	61%	3%	84%	76%	73%	34%	58%	65%	6%
1998	10,589	83%	72%	67%	33%	56%	62%	2%	85%	76%	73%	34%	59%	66%	3%
1999	10,521	83%	73%	68%	35%	56%	61%	2%	85%	77%	74%	36%	59%	65%	3%
2000	10,766	82%	73%	68%	34%	55%	60%	3%	85%	78%	74%	35%	58%	64%	4%
2001	11,796	83%	73%	68%	36%	55%	61%	2%	86%	78%	74%	37%	58%	64%	4%
2002	11,421	82%	72%	68%	38%	57%	62%	2%	85%	77%	74%	40%	61%	66%	4%
2003	11,518	82%	73%	68%	39%	58%	62%	3%	85%	78%	75%	41%	62%	67%	4%
2004	11,736	82%	72%	68%	36%	55%	62%	3%	85%	78%	74%	40%	61%	66%	5%
2005	12,379	81%	70%	65%	39%	56%	59%	3%	83%	75%	71%	41%	59%	64%	5%
2006	12,479	81%	71%	67%	37%	56%	60%	3%	83%	75%	71%	39%	59%	65%	4%
2007	12,893	82%	72%	68%	39%	57%	62%	3%	85%	74%	73%	40%	60%	66%	5%
2008	12,945	82%	72%	68%	39%	58%			82%	76%	73%	40%	61%		
2009	12,643	83%	74%	70%	41%				85%	78%	75%	43%			
2010	12,331	83%	74%	69%					85%	77%	74%				
2011	11,966	84%	75%						85%	78%					
2012	11,945	84%							86%						

Note: University of Baltimore enrolled its first freshmen class in fall 2007.

Source: EIS and DIS files.

**Table 1b**  
**University System of Maryland**  
**Retention and Graduation Rates of African-Americans**  
**First-Time, Full-Time, Degree-Seeking Freshmen Entering in the Fall Semester**

Cohort Year	Cohort Size	Institution of First-Time Entry							Anywhere in the USM						
		Retention Rates			Graduation Rates			Enrolled 7th Year	Retention Rates			Graduation Rates			Enrolled 7th Year
2nd Yr	3rd Yr	4th Yr	4-year	5-year	6-year	2nd Yr	3rd Yr		4th Yr	4-year	5-year	6-year			
1992	1,767	76%	61%	53%	13%	31%	37%	6%	78%	64%	57%	14%	32%	40%	9%
1993	2,033	75%	58%	51%	14%	30%	37%	5%	76%	62%	56%	15%	32%	40%	8%
1994	2,285	74%	60%	54%	16%	34%	42%	5%	76%	65%	60%	17%	36%	45%	8%
1995	2,393	79%	62%	55%	17%	34%	41%	6%	81%	67%	62%	17%	37%	45%	9%
1996	2,409	77%	63%	55%	17%	36%	43%	5%	79%	68%	62%	18%	38%	46%	8%
1997	2,305	79%	65%	58%	19%	37%	44%	5%	81%	71%	66%	20%	40%	49%	8%
1998	2,393	77%	62%	56%	18%	36%	43%	3%	79%	68%	63%	19%	39%	47%	5%
1999	2,276	79%	66%	59%	22%	40%	46%	2%	82%	72%	66%	23%	43%	50%	4%
2000	2,377	76%	63%	56%	18%	36%	42%	4%	79%	69%	63%	19%	39%	46%	7%
2001	2,988	76%	61%	53%	19%	35%	40%	4%	79%	68%	61%	20%	38%	44%	7%
2002	2,747	75%	61%	54%	20%	33%	37%	4%	77%	67%	61%	21%	35%	40%	6%
2003	3,106	75%	62%	54%	20%	34%	39%	4%	78%	68%	61%	21%	35%	42%	6%
2004	2,933	74%	60%	53%	19%	34%	40%	5%	76%	65%	59%	20%	37%	44%	8%
2005	3,612	74%	57%	51%	20%	36%	41%	5%	75%	62%	57%	21%	38%	44%	8%
2006	3,619	74%	60%	54%	19%	36%	43%	4%	76%	65%	59%	19%	39%	46%	7%
2007	3,406	75%	60%	55%	19%	37%	43%	4%	76%	65%	59%	19%	39%	47%	7%
2008	3,567	75%	60%	55%	20%	38%			75%	65%	61%	20%	40%		
2009	3,337	74%	62%	56%	19%				76%	66%	62%	20%			
2010	3,359	77%	63%	57%					79%	68%	63%				
2011	3,169	78%	66%						79%	70%					
2012	3,107	77%							79%						

Note: University of Baltimore enrolled its first freshmen class in fall 2007.

Source: EIS and DIS files.



**Table 1c**  
**University System of Maryland**  
**Retention and Graduation Rates of Hispanics**  
**First-Time, Full-Time, Degree-Seeking Freshmen Entering in the Fall Semester**

Cohort Year	Cohort Size	Institution of First-Time Entry							Anywhere in the USM						
		Retention Rates			Graduation Rates			Enrolled 7th Year	Retention Rates			Graduation Rates			Enrolled 7th Year
2nd Yr	3rd Yr	4th Yr	4-year	5-year	6-year	2nd Yr	3rd Yr		4th Yr	4-year	5-year	6-year			
1989	156	83%	72%	60%	17%	40%	50%	4%	85%	76%	70%	19%	44%	55%	6%
1998	304	84%	69%	65%	28%	52%	59%	5%	87%	74%	71%	29%	55%	63%	6%
1999	321	81%	68%	67%	29%	52%	59%	2%	84%	73%	72%	30%	55%	63%	4%
2000	295	86%	77%	73%	33%	60%	67%	2%	88%	80%	77%	33%	61%	70%	5%
2001	338	84%	73%	71%	28%	57%	63%	1%	85%	77%	76%	28%	59%	66%	4%
2002	325	86%	76%	74%	37%	60%	67%	3%	88%	80%	80%	38%	63%	71%	3%
2003	380	87%	75%	71%	38%	58%	64%	2%	87%	80%	76%	40%	62%	69%	4%
2004	357	85%	77%	74%	39%	61%	65%	4%	88%	81%	78%	39%	63%	68%	6%
2005	421	79%	70%	65%	36%	56%	59%	2%	80%	73%	69%	37%	57%	61%	5%
2006	478	82%	72%	70%	39%	58%	62%	2%	84%	75%	73%	41%	61%	65%	4%
2007	468	85%	75%	73%	41%	61%	66%	4%	87%	76%	77%	42%	64%	70%	6%
2008	515	82%	73%	70%	37%	59%			82%	77%	74%	38%	62%		
2009	521	86%	76%	73%	38%				87%	79%	79%	39%			
2010	616	85%	75%	73%					86%	78%	77%				
2011	672	87%	78%						88%	80%					
2012	708	84%							85%						

Note: University of Baltimore enrolled its first freshmen class in fall 2007.

Source: EIS and DIS files.

**Table 1d**  
**University System of Maryland**  
**Retention and Graduation Rates of First-Time, Full-time, Degree-Seeking Freshmen**  
**Pell-Grant Recipients and All Students Entering in the Fall Semester**

Cohort Year	Cohort Size	Institution of First-Time Entry							Anywhere in the USM						
		Retention Rates			Graduation Rates			Enrolled 7th Year	Retention Rates			Graduation Rates			Enrolled 7th Year
2nd Yr	3rd Yr	4th Yr	4-year	5-year	6-year	2nd Yr	3rd Yr		4th Yr	4-year	5-year	6-year			
<b>First-Time, Full-Time Pell Grant Recipients</b>															
2000	2,018	79%	68%	61%	23%	43%	50%	4%	83%	74%	69%	24%	46%	55%	7%
2001	2,560	78%	64%	58%	22%	40%	46%	3%	84%	73%	67%	24%	44%	52%	6%
2002	2,450	76%	63%	56%	22%	40%	45%	4%	81%	70%	65%	24%	45%	51%	6%
2003	2,524	77%	64%	57%	23%	41%	46%	4%	81%	71%	65%	25%	45%	51%	6%
2004	2,336	76%	64%	56%	22%	38%	46%	5%	80%	71%	64%	24%	41%	51%	8%
2005	2,482	75%	59%	53%	22%	39%	43%	5%	80%	66%	60%	24%	42%	47%	7%
2006	2,581	76%	63%	58%	23%	41%	47%	4%	79%	68%	63%	24%	45%	52%	6%
2007	2,679	78%	63%	57%	22%	41%	47%	4%	81%	66%	63%	23%	44%	51%	7%
2008	2,733	78%	64%	59%	24%	42%			80%	69%	64%	25%	44%		
2009	2,979	79%	67%	60%	25%				80%	69%	66%	26%			
2010	3,370	79%	67%	61%					81%	71%	66%				
2011	3,183	78%	68%						80%	71%					
2012	3,100	79%							81%						
<b>All First-Time Full-Time</b>															
2000	10,766	82%	73%	68%	34%	55%	60%	3%	85%	78%	74%	35%	58%	64%	4%
2001	11,796	83%	73%	68%	36%	55%	61%	2%	86%	78%	74%	37%	58%	64%	4%
2002	11,421	82%	72%	68%	38%	57%	62%	2%	85%	77%	74%	40%	61%	66%	4%
2003	11,518	82%	73%	68%	39%	58%	62%	3%	85%	78%	75%	41%	62%	67%	4%
2004	11,736	82%	72%	68%	36%	55%	62%	3%	85%	78%	74%	40%	61%	66%	5%
2005	12,379	81%	70%	65%	39%	56%	59%	3%	83%	75%	71%	41%	59%	64%	5%
2006	12,479	81%	71%	67%	37%	56%	60%	3%	83%	75%	71%	39%	59%	65%	4%
2007	12,893	82%	72%	68%	39%	57%	62%	3%	85%	74%	73%	40%	60%	66%	5%
2008	12,945	82%	72%	68%	39%	58%			82%	76%	73%	40%	61%		
2009	12,643	83%	74%	70%	41%				85%	78%	75%	43%			
2010	12,331	83%	74%	69%					85%	77%	74%				
2011	11,966	84%	75%						85%	78%					
2012	11,945	84%							86%						

Source: EIS, FAIS and DIS files.

**Table 2a**  
**Bowie State University**  
**Retention and Graduation Rates**  
**First-Time, Full-Time, Degree-Seeking Freshmen Entering in the Fall Semester**

Cohort Year	Cohort Size	Institution of First-Time Entry							Anywhere in the USM						
		Retention Rates			Graduation Rates			Enrolled 7th Year	Retention Rates			Graduation Rates			Enrolled 7th Year
2nd Yr	3rd Yr	4th Yr	4-year	5-year	6-year	2nd Yr	3rd Yr		4th Yr	4-year	5-year	6-year			
1992	342	75%	62%	55%	11%	29%	39%	8%	76%	64%	57%	12%	30%	40%	10%
1993	264	67%	54%	48%	14%	28%	36%	6%	69%	57%	52%	14%	30%	38%	8%
1994	383	73%	60%	54%	15%	33%	41%	8%	75%	63%	58%	15%	34%	43%	10%
1995	435	74%	59%	53%	14%	32%	39%	8%	76%	63%	56%	15%	34%	42%	11%
1996	301	71%	59%	53%	14%	33%	38%	8%	72%	61%	56%	14%	33%	39%	9%
1997	357	71%	61%	51%	12%	30%	38%	8%	75%	65%	55%	13%	31%	40%	10%
1998	418	73%	55%	51%	12%	29%	36%	5%	76%	61%	56%	13%	31%	40%	6%
1999	343	71%	58%	48%	13%	30%	37%	2%	74%	64%	55%	15%	33%	41%	3%
2000	361	73%	61%	52%	12%	28%	35%	7%	75%	66%	57%	12%	29%	38%	11%
2001	594	75%	58%	52%	14%	28%	36%	7%	77%	64%	58%	14%	30%	38%	11%
2002	566	70%	60%	55%	17%	35%	40%	6%	73%	64%	61%	18%	37%	43%	8%
2003	762	73%	60%	51%	13%	32%	40%	4%	76%	65%	56%	14%	34%	42%	6%
2004	627	77%	60%	53%	15%	31%	38%	9%	78%	65%	58%	15%	32%	40%	11%
2005	923	71%	56%	45%	22%	35%	41%	8%	74%	60%	50%	23%	37%	43%	11%
2006	765	71%	54%	49%	11%	27%	35%	7%	72%	58%	52%	11%	29%	37%	9%
2007	820	69%	57%	47%	13%	27%	35%	7%	72%	60%	53%	14%	29%	38%	9%
2008	664	69%	54%	47%	8%	26%			70%	59%	53%	8%	29%		
2009	635	71%	59%	53%	11%				72%	62%	59%	12%			
2010	608	75%	57%	49%					78%	62%	55%				
2011	573	71%	57%						71%	60%					
2012	477	70%							73%						

Source: EIS and DIS files.

**Table 2b**  
**Bowie State University**  
**Retention and Graduation Rates of African-Americans**  
**First-Time, Full-Time, Degree-Seeking Freshmen Entering in the Fall Semester**

Cohort Year	Cohort Size	Institution of First-Time Entry							Anywhere in the USM						
		Retention Rates			Graduation Rates			Enrolled 7th Year	Retention Rates			Graduation Rates			Enrolled 7th Year
2nd Yr	3rd Yr	4th Yr	4-year	5-year	6-year	2nd Yr	3rd Yr		4th Yr	4-year	5-year	6-year			
1992	321	76%	63%	56%	11%	30%	40%	8%	77%	65%	58%	11%	30%	41%	10%
1993	248	67%	54%	48%	13%	27%	35%	6%	69%	58%	52%	13%	29%	37%	8%
1994	354	75%	62%	56%	17%	34%	43%	9%	76%	64%	59%	17%	35%	44%	10%
1995	393	75%	60%	53%	14%	33%	40%	7%	77%	63%	56%	15%	35%	42%	11%
1996	267	70%	58%	54%	14%	33%	38%	8%	71%	59%	55%	14%	33%	39%	10%
1997	325	72%	61%	51%	12%	30%	38%	8%	74%	64%	55%	13%	30%	39%	10%
1998	379	75%	56%	53%	12%	30%	38%	6%	77%	62%	58%	13%	32%	42%	7%
1999	302	73%	62%	51%	13%	31%	39%	2%	75%	66%	56%	12%	31%	40%	3%
2000	337	74%	63%	53%	12%	29%	36%	7%	76%	66%	58%	12%	30%	39%	10%
2001	560	76%	59%	53%	13%	28%	36%	8%	78%	64%	59%	13%	30%	38%	11%
2002	517	71%	61%	56%	16%	35%	41%	6%	73%	65%	62%	17%	37%	44%	9%
2003	711	74%	62%	52%	13%	33%	40%	4%	78%	66%	57%	13%	35%	42%	5%
2004	577	78%	61%	53%	15%	30%	37%	9%	79%	66%	58%	15%	32%	40%	12%
2005	858	72%	56%	45%	21%	35%	40%	9%	74%	60%	50%	22%	37%	42%	11%
2006	717	72%	54%	49%	11%	28%	35%	7%	73%	58%	52%	12%	29%	37%	9%
2007	762	70%	57%	47%	12%	26%	35%	7%	72%	59%	52%	13%	28%	37%	10%
2008	610	70%	54%	48%	8%	27%			70%	59%	54%	9%	29%		
2009	591	71%	59%	53%	11%				72%	62%	58%	12%			
2010	568	75%	58%	50%					78%	63%	56%				
2011	530	72%	58%						72%	61%					
2012	426	71%							73%						

Source: EIS and DIS files.

**Table 3a**  
**Coppin State University**  
**Retention and Graduation Rates**  
**First-Time, Full-Time, Degree-Seeking Freshmen Entering in the Fall Semester**

Cohort Year	Cohort Size	Institution of First-Time Entry							Anywhere in the USM						
		Retention Rates			Graduation Rates			Enrolled 7th Year	Retention Rates			Graduation Rates			Enrolled 7th Year
2nd Yr	3rd Yr	4th Yr	4-year	5-year	6-year	2nd Yr	3rd Yr		4th Yr	4-year	5-year	6-year			
1992	354	72%	49%	40%	5%	15%	21%	10%	73%	50%	42%	5%	15%	21%	12%
1993	502	64%	41%	34%	5%	13%	17%	8%	65%	42%	36%	5%	13%	18%	10%
1994	384	65%	48%	42%	6%	15%	24%	10%	67%	50%	45%	6%	16%	25%	11%
1995	439	72%	55%	48%	7%	18%	26%	10%	73%	57%	52%	7%	18%	26%	13%
1996	513	70%	54%	46%	6%	18%	28%	10%	70%	57%	50%	6%	19%	29%	12%
1997	382	72%	53%	46%	4%	16%	22%	10%	73%	55%	48%	4%	17%	24%	11%
1998	457	72%	53%	44%	7%	18%	25%	5%	74%	54%	46%	7%	19%	26%	6%
1999	441	69%	50%	40%	9%	16%	20%	5%	71%	53%	44%	9%	18%	23%	6%
2000	417	71%	50%	40%	5%	12%	18%	7%	73%	53%	43%	5%	14%	21%	9%
2001	540	70%	46%	38%	6%	14%	18%	6%	72%	49%	41%	6%	15%	20%	8%
2002	578	69%	48%	37%	5%	13%	16%	6%	69%	50%	40%	5%	14%	17%	9%
2003	571	65%	49%	36%	4%	10%	13%	9%	67%	52%	39%	4%	12%	16%	10%
2004	588	63%	43%	35%	4%	10%	15%	9%	64%	46%	39%	4%	11%	17%	11%
2005	661	63%	39%	32%	4%	12%	15%	7%	65%	42%	36%	4%	13%	17%	9%
2006	494	60%	42%	34%	5%	12%	16%	7%	62%	45%	37%	5%	13%	18%	10%
2007	555	58%	37%	32%	3%	9%	13%	8%	59%	39%	34%	4%	10%	14%	10%
2008	570	62%	42%	35%	4%	12%			62%	44%	37%	4%	12%		
2009	541	61%	44%	35%	5%				62%	46%	38%	5%			
2010	511	64%	40%	31%					66%	43%	35%				
2011	478	64%	45%						66%	48%					
2012	425	60%							60%						

Source: EIS and DIS files.

**Table 3b**  
**Coppin State University**  
**Retention and Graduation Rates of African-Americans**  
**First-Time, Full-Time, Degree-Seeking Freshmen Entering in the Fall Semester**

Cohort Year	Cohort Size	Institution of First-Time Entry							Anywhere in the USM						
		Retention Rates			Graduation Rates			Enrolled 7th Year	Retention Rates			Graduation Rates			Enrolled 7th Year
2nd Yr	3rd Yr	4th Yr	4-year	5-year	6-year	2nd Yr	3rd Yr		4th Yr	4-year	5-year	6-year			
1992	330	73%	51%	41%	5%	16%	22%	11%	73%	52%	42%	5%	16%	22%	12%
1993	446	66%	44%	36%	5%	13%	19%	8%	67%	46%	38%	5%	14%	20%	10%
1994	364	66%	49%	44%	5%	15%	25%	10%	68%	51%	46%	5%	16%	26%	12%
1995	416	74%	56%	48%	7%	18%	26%	10%	75%	58%	53%	7%	18%	27%	13%
1996	492	70%	55%	47%	5%	18%	28%	10%	71%	57%	49%	5%	18%	29%	12%
1997	354	74%	55%	47%	4%	16%	22%	11%	75%	57%	50%	4%	17%	24%	12%
1998	439	72%	53%	44%	7%	18%	25%	5%	73%	54%	46%	7%	19%	26%	6%
1999	424	69%	49%	39%	8%	15%	19%	5%	71%	53%	44%	9%	18%	23%	7%
2000	396	71%	50%	39%	4%	12%	18%	7%	73%	54%	42%	4%	13%	20%	9%
2001	516	70%	46%	38%	6%	14%	19%	7%	72%	49%	42%	6%	16%	21%	9%
2002	561	69%	49%	38%	5%	14%	16%	6%	70%	51%	41%	5%	14%	17%	9%
2003	557	66%	49%	37%	4%	10%	13%	9%	67%	53%	40%	4%	12%	16%	10%
2004	567	64%	44%	35%	4%	10%	15%	9%	65%	47%	39%	4%	11%	17%	11%
2005	633	63%	39%	32%	4%	12%	15%	7%	66%	42%	36%	4%	13%	17%	9%
2006	476	60%	44%	36%	5%	12%	16%	8%	62%	46%	38%	5%	13%	19%	10%
2007	371	58%	35%	31%	4%	8%	12%	8%	60%	37%	34%	4%	9%	14%	11%
2008	519	62%	42%	35%	4%	12%			62%	44%	37%	4%	13%		
2009	501	60%	43%	33%	5%				62%	45%	37%	5%			
2010	440	67%	42%	33%					68%	45%	36%				
2011	404	63%	44%						65%	47%					
2012	333	58%							59%						

Source: EIS and DIS files.

**Table 4a**  
**Frostburg State University**  
**Retention and Graduation Rates**  
**First-Time, Full-Time, Degree-Seeking Freshmen Entering in the Fall Semester**

Cohort Year	Cohort Size	Institution of First-Time Entry							Anywhere in the USM						
		Retention Rates			Graduation Rates			Enrolled 7th Year	Retention Rates			Graduation Rates			Enrolled 7th Year
2nd Yr	3rd Yr	4th Yr	4-year	5-year	6-year	2nd Yr	3rd Yr		4th Yr	4-year	5-year	6-year			
1992	861	76%	61%	54%	28%	52%	54%	2%	79%	69%	65%	29%	57%	63%	4%
1993	921	71%	59%	55%	22%	45%	50%	2%	75%	67%	64%	23%	50%	57%	5%
1994	832	71%	60%	54%	24%	48%	52%	2%	76%	69%	65%	26%	55%	61%	5%
1995	929	72%	57%	51%	23%	44%	49%	2%	77%	68%	65%	25%	52%	60%	6%
1996	975	71%	57%	52%	20%	43%	47%	2%	75%	66%	63%	22%	51%	56%	5%
1997	865	73%	60%	57%	24%	48%	51%	3%	77%	68%	67%	26%	53%	58%	6%
1998	932	73%	59%	55%	20%	43%	49%	1%	77%	68%	66%	21%	49%	57%	3%
1999	932	74%	61%	55%	18%	41%	47%	1%	78%	70%	66%	20%	47%	56%	3%
2000	1,028	70%	58%	55%	19%	42%	47%	2%	75%	67%	65%	21%	47%	54%	5%
2001	923	76%	63%	57%	22%	46%	51%	1%	79%	71%	67%	23%	52%	59%	3%
2002	999	70%	59%	54%	23%	43%	48%	2%	75%	68%	66%	25%	50%	57%	4%
2003	988	74%	61%	56%	22%	45%	49%	2%	79%	71%	68%	24%	53%	60%	4%
2004	955	70%	58%	54%	22%	43%	48%	2%	75%	67%	64%	24%	50%	56%	6%
2005	928	72%	57%	54%	20%	41%	45%	2%	75%	63%	64%	21%	45%	52%	6%
2006	1,011	68%	56%	52%	17%	39%	44%	2%	72%	65%	60%	19%	45%	52%	6%
2007	1,057	74%	60%	54%	22%	41%	47%	2%	78%	65%	64%	24%	47%	56%	6%
2008	1,030	72%	59%	54%	20%	44%			72%	65%	62%	21%	48%		
2009	1,028	74%	61%	56%	21%				78%	69%	67%	23%			
2010	1,028	71%	60%	53%					73%	66%	63%				
2011	825	72%	60%						75%	67%					
2012	813	77%							79%						

Source: EIS and DIS files.

**Table 4b**  
**Frostburg State University**  
**Retention and Graduation Rates of African-Americans**  
**First-Time, Full-Time, Degree-Seeking Freshmen Entering in the Fall Semester**

Cohort Year	Cohort Size	Institution of First-Time Entry							Anywhere in the USM						
		Retention Rates			Graduation Rates			Enrolled 7th Year	Retention Rates			Graduation Rates			Enrolled 7th Year
2nd Yr	3rd Yr	4th Yr	4-year	5-year	6-year	2nd Yr	3rd Yr		4th Yr	4-year	5-year	6-year			
1992	65	78%	51%	35%	6%	26%	29%	2%	80%	60%	51%	6%	32%	42%	3%
1993	92	71%	55%	51%	9%	30%	43%	3%	74%	62%	62%	9%	32%	47%	8%
1994	78	60%	49%	47%	8%	26%	32%	1%	68%	59%	56%	8%	28%	37%	6%
1995	85	73%	46%	39%	5%	24%	28%	1%	76%	62%	59%	7%	34%	44%	9%
1996	120	69%	49%	47%	11%	32%	35%	3%	73%	58%	59%	12%	35%	40%	8%
1997	106	72%	58%	51%	14%	30%	39%	5%	77%	70%	68%	17%	36%	45%	7%
1998	154	71%	53%	48%	8%	26%	36%	1%	75%	64%	61%	9%	30%	46%	5%
1999	146	79%	66%	58%	16%	40%	46%	0%	83%	76%	72%	17%	44%	54%	3%
2000	152	78%	63%	61%	16%	40%	50%	2%	82%	71%	70%	17%	43%	54%	8%
2001	116	75%	56%	48%	12%	33%	40%	0%	80%	70%	61%	12%	39%	48%	3%
2002	128	66%	53%	47%	16%	34%	40%	2%	72%	66%	62%	17%	41%	49%	5%
2003	128	78%	64%	55%	20%	38%	45%	3%	81%	74%	69%	20%	40%	51%	6%
2004	151	73%	63%	58%	12%	32%	42%	3%	77%	72%	66%	13%	37%	48%	7%
2005	186	76%	56%	54%	10%	37%	43%	2%	79%	61%	63%	10%	38%	48%	9%
2006	215	74%	56%	52%	11%	33%	41%	1%	77%	66%	59%	12%	35%	46%	8%
2007	289	78%	60%	52%	13%	35%	44%	1%	81%	65%	65%	14%	41%	53%	6%
2008	290	72%	58%	53%	11%	38%			72%	65%	60%	11%	41%		
2009	329	73%	60%	56%	16%				78%	71%	69%	18%			
2010	270	70%	57%	49%					74%	66%	60%				
2011	279	76%	61%						81%	74%					
2012	248	80%							83%						

Source: EIS and DIS files.



**Table 5a**  
**Salisbury University**  
**Retention and Graduation Rates**  
**First-Time, Full-Time, Degree-Seeking Freshmen Entering in the Fall Semester**

Cohort Year	Cohort Size	Institution of First-Time Entry							Anywhere in the USM						
		Retention Rates			Graduation Rates			Enrolled 7th Year	Retention Rates			Graduation Rates			Enrolled 7th Year
2nd Yr	3rd Yr	4th Yr	4-year	5-year	6-year	2nd Yr	3rd Yr		4th Yr	4-year	5-year	6-year			
1992	647	83%	71%	65%	43%	60%	64%	2%	85%	76%	74%	45%	66%	70%	4%
1993	739	79%	67%	62%	42%	60%	63%	1%	82%	74%	68%	44%	64%	69%	4%
1994	695	79%	69%	65%	49%	63%	66%	1%	84%	77%	74%	53%	71%	74%	3%
1995	658	83%	74%	69%	52%	68%	71%	2%	88%	81%	75%	56%	74%	78%	4%
1996	689	85%	74%	67%	45%	64%	68%	2%	88%	80%	76%	48%	70%	74%	3%
1997	886	82%	71%	69%	48%	67%	69%	2%	85%	79%	78%	50%	72%	76%	4%
1998	935	81%	73%	69%	47%	65%	67%	1%	86%	80%	77%	47%	68%	72%	2%
1999	877	82%	75%	69%	52%	66%	67%	1%	86%	80%	77%	51%	68%	70%	2%
2000	940	83%	75%	71%	50%	65%	68%	1%	87%	82%	79%	52%	69%	73%	2%
2001	945	81%	73%	71%	44%	63%	66%	1%	86%	80%	78%	46%	68%	73%	3%
2002	908	80%	73%	71%	45%	63%	67%	1%	85%	80%	78%	47%	68%	73%	2%
2003	947	81%	72%	69%	46%	63%	66%	2%	85%	79%	78%	48%	69%	73%	3%
2004	982	83%	75%	71%	46%	66%	69%	1%	88%	81%	79%	49%	71%	76%	3%
2005	956	81%	72%	69%	46%	62%	65%	1%	85%	79%	75%	48%	66%	71%	4%
2006	1,028	80%	73%	70%	48%	63%	67%	1%	84%	78%	75%	50%	68%	72%	2%
2007	1,143	82%	73%	68%	46%	63%	66%	2%	86%	76%	75%	49%	69%	72%	4%
2008	1,199	80%	72%	68%	44%	63%			80%	77%	75%	46%	68%		
2009	1,275	80%	73%	68%	45%				84%	79%	77%	47%			
2010	1,250	82%	74%	71%					85%	79%	78%				
2011	1,246	82%	75%						84%	80%					
2012	1,230	79%							82%						

Source: EIS and DIS files.

**Table 5b**  
**Salisbury University**  
**Retention and Graduation Rates of African-Americans**  
**First-Time, Full-Time, Degree-Seeking Freshmen Entering in the Fall Semester**

Cohort Year	Cohort Size	Institution of First-Time Entry							Anywhere in the USM						
		Retention Rates			Graduation Rates			Enrolled 7th Year	Retention Rates			Graduation Rates			Enrolled 7th Year
2nd Yr	3rd Yr	4th Yr	4-year	5-year	6-year	2nd Yr	3rd Yr		4th Yr	4-year	5-year	6-year			
1992	46	74%	63%	61%	24%	41%	57%	4%	74%	65%	67%	24%	43%	61%	7%
1993	54	59%	57%	52%	26%	44%	52%	2%	65%	69%	54%	28%	46%	54%	4%
1994	53	74%	68%	60%	32%	49%	57%	0%	77%	72%	70%	34%	51%	60%	2%
1995	34	79%	74%	65%	32%	62%	65%	0%	79%	76%	68%	35%	65%	68%	0%
1996	60	72%	63%	57%	25%	43%	50%	5%	75%	75%	72%	25%	47%	55%	8%
1997	45	62%	56%	47%	24%	40%	42%	2%	67%	67%	69%	29%	47%	58%	4%
1998	41	71%	63%	44%	32%	39%	44%	2%	83%	76%	61%	24%	44%	54%	5%
1999	35	63%	63%	63%	26%	55%	61%	0%	63%	66%	66%	29%	58%	64%	0%
2000	32	78%	63%	53%	31%	44%	50%	0%	84%	72%	72%	38%	54%	60%	6%
2001	86	74%	64%	62%	27%	50%	55%	1%	79%	70%	70%	27%	53%	57%	7%
2002	84	75%	74%	64%	19%	45%	56%	2%	79%	81%	75%	20%	49%	64%	5%
2003	79	82%	75%	72%	27%	56%	59%	1%	84%	80%	82%	27%	59%	66%	3%
2004	75	80%	65%	57%	24%	47%	53%	0%	80%	69%	65%	25%	51%	59%	1%
2005	94	83%	66%	66%	26%	51%	59%	3%	83%	69%	72%	26%	52%	62%	7%
2006	125	86%	77%	74%	33%	57%	66%	2%	87%	79%	78%	33%	60%	70%	3%
2007	129	76%	64%	61%	28%	49%	53%	1%	79%	66%	71%	29%	54%	60%	5%
2008	115	77%	63%	59%	30%	46%			77%	72%	73%	32%	53%		
2009	132	80%	68%	63%	33%				83%	79%	73%	36%			
2010	144	83%	72%	73%					85%	79%	80%				
2011	105	78%	70%						82%	79%					
2012	123	84%							85%						

Source: EIS and DIS files.

**Table 6a**  
**Towson University**  
**Retention and Graduation Rates**  
**First-Time, Full-Time, Degree-Seeking Freshmen Entering in the Fall Semester**

Cohort Year	Cohort Size	Institution of First-Time Entry							Anywhere in the USM						
		Retention Rates			Graduation Rates			Enrolled 7th Year	Retention Rates			Graduation Rates			Enrolled 7th Year
2nd Yr	3rd Yr	4th Yr	4-year	5-year	6-year	2nd Yr	3rd Yr		4th Yr	4-year	5-year	6-year			
1992	1,343	82%	73%	67%	27%	53%	59%	4%	84%	76%	71%	28%	56%	63%	6%
1993	1,221	80%	71%	66%	26%	52%	58%	3%	83%	76%	71%	28%	56%	62%	5%
1994	1,341	81%	70%	65%	25%	50%	56%	4%	83%	73%	68%	26%	52%	59%	6%
1995	1,494	81%	74%	70%	32%	56%	62%	3%	83%	76%	74%	32%	59%	65%	5%
1996	1,851	80%	71%	67%	28%	52%	57%	4%	82%	75%	72%	29%	55%	60%	6%
1997	1,808	82%	72%	67%	31%	52%	57%	4%	83%	76%	71%	31%	54%	60%	6%
1998	1,923	83%	74%	69%	30%	55%	61%	2%	85%	78%	73%	31%	58%	64%	3%
1999	2,103	81%	72%	68%	29%	51%	57%	2%	83%	76%	73%	31%	54%	61%	3%
2000	1,981	82%	75%	69%	30%	54%	60%	3%	85%	79%	74%	31%	56%	63%	4%
2001	1,910	86%	76%	72%	33%	57%	62%	3%	88%	80%	77%	34%	60%	66%	4%
2002	2,198	84%	75%	72%	36%	60%	64%	3%	87%	80%	77%	38%	64%	69%	4%
2003	1,755	84%	79%	76%	42%	66%	70%	2%	88%	83%	81%	44%	69%	74%	3%
2004	2,077	82%	76%	72%	37%	60%	66%	3%	86%	82%	79%	39%	65%	72%	4%
2005	2,315	79%	73%	68%	37%	58%	62%	4%	84%	78%	75%	40%	62%	68%	5%
2006	2,690	81%	73%	69%	35%	58%	64%	2%	84%	78%	74%	38%	62%	69%	3%
2007	2,652	81%	73%	69%	37%	58%	64%	2%	84%	75%	73%	39%	62%	67%	4%
2008	2,824	83%	76%	73%	40%	62%			84%	79%	77%	41%	65%		
2009	2,397	84%	77%	74%	42%				87%	81%	78%	44%			
2010	2,427	84%	77%	73%					86%	80%	77%				
2011	2,536	85%	79%						87%	82%					
2012	2,463	86%							88%						

Source: EIS and DIS files.

**Table 6b**  
**Towson University**  
**Retention and Graduation Rates of African-Americans**  
**First-Time, Full-Time, Degree-Seeking Freshmen Entering in the Fall Semester**

Cohort Year	Cohort Size	Institution of First-Time Entry							Anywhere in the USM						
		Retention Rates			Graduation Rates			Enrolled 7th Year	Retention Rates			Graduation Rates			Enrolled 7th Year
2nd Yr	3rd Yr	4th Yr	4-year	5-year	6-year	2nd Yr	3rd Yr		4th Yr	4-year	5-year	6-year			
1992	127	85%	76%	66%	24%	45%	50%	7%	86%	79%	70%	24%	46%	50%	12%
1993	140	77%	66%	61%	19%	36%	43%	6%	79%	72%	69%	19%	40%	48%	9%
1994	186	78%	71%	62%	17%	40%	45%	5%	80%	75%	66%	18%	43%	48%	8%
1995	147	82%	71%	65%	17%	39%	44%	6%	82%	73%	67%	17%	39%	45%	8%
1996	159	86%	70%	67%	15%	41%	46%	7%	86%	73%	70%	15%	43%	48%	9%
1997	170	81%	73%	63%	24%	42%	47%	9%	82%	76%	67%	24%	45%	51%	12%
1998	162	83%	73%	68%	15%	43%	52%	3%	86%	78%	75%	17%	46%	55%	6%
1999	192	85%	76%	73%	29%	47%	55%	3%	86%	79%	75%	29%	48%	56%	7%
2000	148	87%	78%	74%	26%	53%	60%	3%	89%	80%	76%	26%	54%	61%	6%
2001	152	93%	83%	77%	30%	54%	59%	6%	94%	86%	83%	30%	54%	61%	9%
2002	153	92%	81%	77%	31%	56%	67%	2%	92%	83%	82%	32%	58%	68%	5%
2003	162	90%	87%	84%	37%	66%	73%	6%	92%	89%	87%	38%	68%	75%	7%
2004	167	90%	83%	81%	31%	62%	72%	2%	92%	87%	86%	31%	64%	77%	4%
2005	268	85%	74%	68%	25%	46%	54%	7%	85%	75%	70%	25%	47%	56%	9%
2006	304	85%	77%	68%	22%	50%	59%	4%	87%	81%	73%	23%	54%	63%	9%
2007	260	84%	74%	68%	26%	50%	59%	5%	85%	76%	72%	28%	53%	63%	
2008	290	88%	81%	78%	33%	60%			89%	83%	81%	33%	62%		
2009	293	83%	78%	74%	34%				86%	82%	77%	35%			
2010	288	84%	78%	72%					88%	82%	79%				
2011	318	92%	86%						93%	88%					
2012	343	90%							91%						

Source: EIS and DIS files.

**Table 7a**  
**University of Maryland Baltimore County**  
**Retention and Graduation Rates**  
**First-Time, Full-Time, Degree-Seeking Freshmen Entering in the Fall Semester**

Cohort Year	Cohort Size	Institution of First-Time Entry							Anywhere in the USM						
		Retention Rates			Graduation Rates			Enrolled 7th Year	Retention Rates			Graduation Rates			Enrolled 7th Year
2nd Yr	3rd Yr	4th Yr	4-year	5-year	6-year	2nd Yr	3rd Yr		4th Yr	4-year	5-year	6-year			
1992	883	83%	69%	61%	21%	43%	50%	5%	85%	76%	70%	23%	49%	57%	7%
1993	930	82%	69%	61%	21%	42%	50%	4%	86%	77%	72%	23%	49%	60%	7%
1994	768	83%	67%	60%	23%	44%	50%	4%	86%	76%	71%	24%	51%	59%	7%
1995	968	83%	69%	63%	28%	47%	52%	5%	87%	77%	73%	30%	52%	60%	7%
1996	1,005	82%	70%	63%	26%	46%	51%	4%	86%	76%	71%	28%	50%	57%	8%
1997	1,136	84%	71%	63%	28%	48%	54%	4%	87%	77%	71%	30%	52%	60%	7%
1998	1,246	83%	69%	61%	26%	46%	53%	1%	87%	76%	70%	28%	52%	61%	4%
1999	1,400	81%	69%	63%	27%	47%	54%	1%	85%	76%	71%	29%	53%	62%	3%
2000	1,307	82%	69%	64%	26%	46%	52%	4%	88%	78%	74%	29%	54%	62%	6%
2001	1,333	82%	72%	66%	31%	50%	56%	4%	88%	79%	75%	33%	56%	63%	6%
2002	1,356	82%	71%	65%	28%	49%	56%	4%	89%	80%	76%	32%	56%	65%	7%
2003	1,489	82%	71%	67%	32%	51%	59%	4%	89%	81%	79%	35%	59%	67%	6%
2004	1,403	81%	69%	64%	31%	50%	55%	4%	87%	79%	77%	35%	59%	66%	7%
2005	1,415	82%	68%	63%	30%	48%	53%	5%	88%	78%	75%	34%	57%	64%	8%
2006	1,419	84%	72%	67%	33%	51%	58%	4%	89%	80%	74%	37%	58%	66%	6%
2007	1,424	87%	75%	69%	33%	56%	62%	4%	90%	78%	76%	35%	61%	67%	7%
2008	1,557	84%	71%	67%	30%	52%			85%	78%	75%	33%	58%		
2009	1,524	83%	72%	68%	33%				86%	77%	74%	35%			
2010	1,485	84%	74%	68%					86%	79%	75%				
2011	1,416	84%	72%						86%	78%					
2012	1,547	85%							87%						

Source: EIS and DIS files.

**Table 7b**  
**University of Maryland Baltimore County**  
**Retention and Graduation Rates of African-Americans**  
**First-Time, Full-Time, Degree-Seeking Freshmen Entering in the Fall Semester**

Cohort Year	Cohort Size	Institution of First-Time Entry							Anywhere in the USM						
		Retention Rates			Graduation Rates			Enrolled 7th Year	Retention Rates			Graduation Rates			Enrolled 7th Year
2nd Yr	3rd Yr	4th Yr	4-year	5-year	6-year	2nd Yr	3rd Yr		4th Yr	4-year	5-year	6-year			
1992	130	86%	75%	62%	25%	44%	49%	3%	87%	79%	67%	26%	46%	53%	6%
1993	155	92%	85%	73%	23%	44%	57%	4%	95%	88%	80%	25%	48%	61%	6%
1994	133	93%	81%	74%	30%	55%	60%	2%	94%	86%	80%	31%	59%	65%	5%
1995	169	90%	74%	71%	35%	55%	57%	4%	91%	79%	76%	37%	57%	62%	5%
1996	145	88%	74%	64%	27%	47%	52%	6%	90%	80%	71%	29%	50%	57%	12%
1997	183	91%	79%	70%	28%	48%	56%	2%	91%	80%	74%	28%	49%	59%	5%
1998	179	93%	77%	70%	26%	52%	59%	1%	94%	82%	77%	27%	55%	62%	3%
1999	185	88%	78%	72%	28%	50%	59%	1%	89%	82%	76%	29%	53%	63%	2%
2000	166	89%	74%	69%	22%	47%	56%	6%	92%	80%	75%	25%	51%	61%	8%
2001	149	87%	75%	73%	33%	54%	61%	3%	88%	79%	78%	34%	57%	64%	4%
2002	119	87%	76%	68%	21%	49%	55%	6%	89%	78%	77%	21%	52%	61%	10%
2003	157	90%	80%	75%	33%	52%	59%	4%	93%	86%	83%	33%	56%	65%	6%
2004	131	87%	74%	69%	28%	50%	57%	3%	89%	79%	78%	31%	56%	63%	6%
2005	143	91%	77%	72%	30%	50%	56%	4%	91%	84%	78%	33%	55%	61%	7%
2006	166	91%	82%	77%	34%	53%	61%	4%	92%	84%	78%	34%	55%	64%	4%
2007	199	90%	80%	76%	29%	55%	63%	7%	93%	82%	79%	29%	56%	66%	9%
2008	209	86%	72%	73%	27%	51%			87%	75%	78%	27%	54%		
2009	226	90%	78%	78%	30%				91%	81%	82%	32%			
2010	206	85%	77%	73%					87%	81%	77%				
2011	182	85%	75%						85%	76%					
2012	175	91%							91%						

Source: EIS and DIS files.

**Table 8a**  
**University of Maryland College Park**  
**Retention and Graduation Rates**  
**First-Time, Full-Time, Degree-Seeking Freshmen Entering in the Fall Semester**

Cohort Year	Cohort Size	Institution of First-Time Entry							Anywhere in the USM						
		Retention Rates			Graduation Rates			Enrolled 7th Year	Retention Rates			Graduation Rates			Enrolled 7th Year
2nd Yr	3rd Yr	4th Yr	4-year	5-year	6-year	2nd Yr	3rd Yr		4th Yr	4-year	5-year	6-year			
1992	3,129	84%	74%	71%	27%	54%	63%	4%	84%	76%	73%	28%	55%	65%	7%
1993	3,163	85%	76%	72%	29%	56%	64%	4%	86%	78%	75%	29%	58%	66%	7%
1994	3,655	85%	75%	70%	30%	58%	65%	3%	85%	76%	73%	30%	59%	67%	6%
1995	3,589	86%	75%	72%	34%	59%	66%	4%	87%	77%	75%	34%	61%	69%	7%
1996	3,553	87%	78%	74%	38%	64%	71%	3%	88%	80%	77%	38%	65%	73%	6%
1997	3,960	88%	79%	75%	40%	67%	74%	3%	88%	80%	78%	41%	68%	76%	5%
1998	4,056	89%	81%	77%	44%	71%	77%	1%	90%	82%	80%	41%	66%	72%	3%
1999	3,892	90%	83%	80%	48%	73%	78%	1%	91%	84%	82%	45%	71%	77%	2%
2000	3,952	91%	84%	80%	48%	73%	77%	2%	91%	85%	83%	48%	74%	79%	3%
2001	4,357	91%	84%	81%	52%	72%	76%	1%	92%	85%	83%	53%	74%	79%	3%
2002	3,898	92%	85%	83%	58%	77%	80%	1%	93%	87%	85%	58%	78%	82%	2%
2003	4,055	92%	85%	83%	57%	77%	80%	1%	92%	86%	86%	58%	79%	82%	3%
2004	4,178	92%	85%	82%	58%	76%	79%	1%	92%	87%	85%	58%	78%	81%	3%
2005	4,198	91%	85%	82%	61%	77%	80%	1%	92%	86%	84%	61%	78%	81%	3%
2006	3,945	92%	85%	83%	59%	77%	80%	1%	93%	87%	84%	59%	77%	81%	3%
2007	4,224	93%	86%	84%	61%	79%	82%	1%	94%	87%	86%	61%	80%	84%	3%
2008	3,900	93%	88%	85%	62%	80%			93%	89%	86%	63%	81%		
2009	4,193	95%	89%	86%	65%				95%	90%	87%	65%			
2010	3,923	94%	88%	86%					94%	89%	87%				
2011	3,989	93%	88%						94%	89%					
2012	3,893	94%							95%						

Source: EIS and DIS files.

**Table 8b**  
**University of Maryland College Park**  
**Retention and Graduation Rates of African-Americans**  
**First-Time, Full-Time, Degree-Seeking Freshmen Entering in the Fall Semester**

Cohort Year	Cohort Size	Institution of First-Time Entry							Anywhere in the USM						
		Retention Rates			Graduation Rates			Enrolled 7th Year	Retention Rates			Graduation Rates			Enrolled 7th Year
2nd Yr	3rd Yr	4th Yr	4-year	5-year	6-year	2nd Yr	3rd Yr		4th Yr	4-year	5-year	6-year			
1992	353	80%	68%	66%	14%	40%	47%	7%	80%	69%	69%	14%	41%	48%	11%
1993	463	84%	68%	62%	14%	37%	45%	7%	84%	70%	65%	14%	38%	47%	11%
1994	513	82%	71%	62%	16%	42%	52%	4%	82%	72%	64%	16%	43%	54%	7%
1995	547	83%	68%	60%	15%	36%	48%	6%	84%	70%	64%	15%	37%	50%	12%
1996	551	83%	73%	67%	21%	46%	56%	4%	84%	74%	70%	21%	46%	58%	7%
1997	578	85%	74%	69%	20%	48%	57%	4%	86%	77%	74%	21%	50%	60%	7%
1998	516	84%	75%	68%	22%	48%	57%	2%	85%	76%	72%	22%	47%	57%	5%
1999	527	88%	81%	76%	30%	57%	65%	1%	89%	83%	79%	30%	58%	66%	4%
2000	476	87%	78%	73%	31%	61%	68%	2%	88%	80%	77%	31%	63%	71%	4%
2001	526	87%	78%	73%	36%	59%	65%	3%	87%	80%	78%	37%	61%	67%	6%
2002	451	88%	80%	77%	38%	62%	67%	3%	88%	83%	81%	39%	64%	70%	4%
2003	518	89%	80%	77%	40%	63%	69%	3%	89%	82%	80%	40%	64%	70%	4%
2004	512	87%	79%	74%	40%	62%	68%	2%	87%	83%	80%	41%	64%	71%	6%
2005	563	89%	82%	77%	41%	67%	72%	2%	89%	83%	80%	42%	68%	74%	4%
2006	611	91%	83%	80%	43%	68%	73%	2%	91%	86%	82%	43%	69%	75%	4%
2007	565	95%	85%	83%	42%	70%	75%		95%	86%	85%	43%	71%	77%	4%
2008	537	91%	85%	81%	45%	70%			91%	87%	82%	46%	71%		
2009	385	95%	90%	85%	47%				95%	91%	86%	47%			
2010	542	94%	86%	85%					94%	88%	87%				
2011	614	95%	90%						95%	90%					
2012	589	93%							94%						

Source: EIS and DIS files.



**Table 9a**  
**University of Maryland Eastern Shore**  
**Retention and Graduation Rates**  
**First-Time, Full-Time, Degree-Seeking Freshmen Entering in the Fall Semester**

Cohort Year	Cohort Size	Institution of First-Time Entry							Anywhere in the USM						
		Retention Rates			Graduation Rates			Enrolled 7th Year	Retention Rates			Graduation Rates			Enrolled 7th Year
2nd Yr	3rd Yr	4th Yr	4-year	5-year	6-year	2nd Yr	3rd Yr		4th Yr	4-year	5-year	6-year			
1992	499	68%	52%	38%	14%	25%	29%	2%	72%	60%	51%	15%	30%	36%	6%
1993	523	72%	52%	44%	18%	32%	36%	1%	77%	61%	57%	20%	36%	42%	6%
1994	739	64%	48%	43%	18%	32%	36%	1%	69%	58%	55%	19%	36%	41%	6%
1995	714	75%	57%	48%	22%	37%	40%	2%	81%	68%	64%	24%	42%	48%	6%
1996	728	74%	59%	46%	24%	37%	41%	1%	79%	72%	62%	26%	43%	49%	5%
1997	646	76%	58%	52%	26%	40%	44%	1%	82%	72%	68%	30%	47%	54%	5%
1998	622	70%	55%	49%	24%	39%	42%	2%	76%	69%	64%	27%	45%	50%	3%
1999	533	74%	57%	52%	25%	38%	41%	1%	83%	71%	67%	26%	43%	48%	4%
2000	780	66%	54%	47%	19%	30%	34%	3%	72%	66%	61%	20%	34%	40%	6%
2001	1,194	71%	56%	42%	16%	28%	32%	2%	77%	69%	56%	18%	33%	38%	6%
2002	918	69%	51%	43%	22%	34%	38%	2%	75%	61%	55%	23%	40%	45%	2%
2003	951	67%	48%	39%	18%	29%	32%	3%	73%	58%	51%	20%	34%	38%	6%
2004	926	64%	48%	40%	17%	27%	32%	3%	68%	56%	50%	20%	31%	36%	6%
2005	983	65%	46%	40%	15%	27%	30%	3%	69%	55%	51%	14%	30%	35%	6%
2006	1,127	64%	45%	41%	13%	26%	30%	3%	67%	55%	44%	14%	29%	35%	6%
2007	875	65%	48%	44%	13%	28%	32%	2%	70%	46%	52%	14%	31%	37%	6%
2008	1,038	69%	51%	46%	19%	31%			69%	59%	54%	19%	34%		
2009	876	64%	50%	44%	14%				66%	56%	51%	14%			
2010	944	68%	54%	46%					71%	60%	54%				
2011	748	68%	54%						71%	60%					
2012	882	66%							70%						

Source: EIS and DIS files.

**Table 9b**  
**University of Maryland Eastern Shore**  
**Retention and Graduation Rates of African-Americans**  
**First-Time, Full-Time, Degree-Seeking Freshmen Entering in the Fall Semester**

Cohort Year	Cohort Size	Institution of First-Time Entry							Anywhere in the USM						
		Retention Rates			Graduation Rates			Enrolled 7th Year	Retention Rates			Graduation Rates			Enrolled 7th Year
2nd Yr	3rd Yr	4th Yr	4-year	5-year	6-year	2nd Yr	3rd Yr		4th Yr	4-year	5-year	6-year			
1992	395	71%	53%	42%	14%	27%	31%	3%	74%	61%	52%	15%	31%	36%	7%
1993	435	74%	54%	46%	20%	34%	37%	1%	77%	61%	56%	20%	37%	42%	6%
1994	604	67%	50%	45%	19%	33%	37%	2%	71%	60%	58%	20%	37%	43%	5%
1995	602	77%	59%	51%	23%	38%	42%	2%	81%	69%	66%	24%	43%	49%	6%
1996	615	76%	62%	49%	24%	40%	43%	1%	80%	74%	64%	26%	45%	51%	4%
1997	544	78%	60%	53%	27%	41%	45%	1%	83%	72%	69%	30%	47%	54%	5%
1998	523	72%	57%	50%	25%	40%	43%	1%	76%	69%	64%	28%	45%	50%	3%
1999	465	77%	58%	54%	26%	40%	43%	1%	84%	72%	67%	27%	44%	48%	3%
2000	670	67%	55%	47%	19%	30%	34%	3%	72%	67%	61%	21%	35%	41%	6%
2001	883	70%	56%	42%	16%	28%	32%	2%	76%	68%	55%	18%	34%	38%	6%
2002	734	71%	53%	45%	21%	34%	37%	2%	75%	63%	56%	22%	38%	43%	4%
2003	794	67%	49%	41%	18%	30%	32%	3%	74%	60%	53%	20%	35%	39%	6%
2004	753	64%	49%	40%	16%	26%	30%	3%	68%	57%	50%	19%	30%	35%	7%
2005	867	65%	46%	41%	16%	27%	30%	3%	69%	56%	52%	17%	31%	36%	6%
2006	1,005	65%	47%	42%	12%	26%	31%	3%	68%	57%	50%	13%	30%	37%	5%
2007	779	65%	48%	43%	12%	28%	32%	2%	69%	51%	52%	13%	31%	36%	6%
2008	931	70%	52%	47%	19%	32%			70%	59%	55%	19%	34%		
2009	787	66%	52%	46%	14%				68%	57%	52%	14%			
2010	803	67%	54%	47%					70%	60%	55%				
2011	649	68%	54%						71%	60%					
2012	751	67%							71%						

Source: EIS and DIS files.

**Table 10a**  
**University of Baltimore**  
**Retention and Graduation Rates**  
**First-Time, Full-Time, Degree-Seeking Freshmen Entering in the Fall Semester**

Cohort Year	Cohort Size	Institution of First-Time Entry							Anywhere in the USM						
		Retention Rates			Graduation Rates			Enrolled 7th Year	Retention Rates			Graduation Rates			Enrolled 7th Year
2nd Yr	3rd Yr	4th Yr	4-year	5-year	6-year	2nd Yr	3rd Yr		4th Yr	4-year	5-year	6-year			
2007	143	68%	55%	49%	18%	31%	36%	4%	72%	65%	62%	19%	38%	44%	1%
2008	163	82%	63%	56%	15%	35%			83%	70%	63%	17%	39%		
2009	174	76%	53%	47%	8%				80%	60%	55%	9%			
2010	155	77%	54%	54%					79%	58%	57%				
2011	155	72%	54%						74%	57%					
2012	215	67%							70%						

Source: EIS and DIS files.  
 UB enrolled Freshmen for the first time in 2007

**Table 10b**  
**University of Baltimore**  
**Retention and Graduation Rates of African-Americans**  
**First-Time, Full-Time, Degree-Seeking Freshmen Entering in the Fall Semester**

Cohort Year	Cohort Size	Institution of First-Time Entry							Anywhere in the USM						
		Retention Rates			Graduation Rates			Enrolled 7th Year	Retention Rates			Graduation Rates			Enrolled 7th Year
2nd Yr	3rd Yr	4th Yr	4-year	5-year	6-year	2nd Yr	3rd Yr		4th Yr	4-year	5-year	6-year			
2007	52	77%	65%	54%	13%	27%	31%	10%	81%	71%	62%	13%	29%	35%	12%
2008	66	74%	45%	44%	6%	23%			74%	55%	50%	9%	27%		
2009	93	77%	53%	46%	2%				82%	60%	53%	2%			
2010	98	80%	56%	55%					81%	60%	59%				
2011	88	75%	52%						76%	56%					
2012	119	69%							74%						

Source: EIS and DIS files.



**TRANSFER STUDENTS TO THE  
UNIVERSITY SYSTEM OF  
MARYLAND:**

*Patterns of Enrollment and Success*

*Updated through FY 2013*

*Bowie State University (BSU)*  
*Coppin State University (CSU)*  
*Frostburg State University (FSU)*  
*Salisbury University (SU)*  
*Towson University (TU)*  
*University of Baltimore (UB)*  
*University of Maryland, Baltimore (UMB)*  
*University of Maryland, Baltimore County (UMBC)*  
*University of Maryland, College Park (UMCP)*  
*University of Maryland Eastern Shore (UMES)*  
*University of Maryland University College (UMUC)*

**Office of the Chief Operating Officer and  
Vice Chancellor for Administration and Finance  
University System of Maryland  
March 2014**

## **Highlights:**

- 21,889 students transferred to a USM institution in FY 2013 (up 3% over the prior fiscal year number and 8% over the past five years). Approximately 54 percent (11,882) of those transfers came from a Maryland community college.
- The number of Maryland community college students who transferred in FY 2013 increased by 8% (800+) over the FY 2012 number. Over the past five years (FY 2009 - FY 2013) the number of Maryland community college students transferring to a USM institution has increased by nearly 25 percent (+2,414).
- While six of Maryland's 16 public community colleges increased transfers – all within the Baltimore-DC corridor – and supplied 68% of the community college transfers entering a USM institution in FY 2013, that percentage was down from the FY 2009 high of 74%. This trend continued because the most rapid growth in the number of students transferring to a USM institution is occurring at community colleges outside the Baltimore-DC corridor (Frederick, Cecil, Harford, Carroll, Chesapeake, and Southern Maryland).
- The largest proportion of Maryland community college students who transferred to USM institutions in FY 2013 enrolled in the following program areas: business and management (21%), social sciences (11%), computer and information science (11%), education (9%), and the health professions (8%). This was consistent with historical trends.
- 73% of Maryland community college students who transferred to USM institutions in FY 2013 enrolled as full-time students (based on fall 2012 enrollments), up from 70% five years ago. Although it is decreasing, a gap still remains between African-American transfer students who enroll full time (65%) and white transfer students (78% of who enroll full-time after transferring.)
- 82% of Maryland community college students who transferred to a USM institution in FY 2013 entered with either sophomore or junior status (based on fall 2012 enrollment), up two percent over the past five years.
- 52% of the FY 2010 cohort of Maryland community college transfers to USM institutions graduated within four years of transferring (regardless of whether they attended full-time or part-time). When this four-year graduation rate is pared down to just those Maryland community college transfers who attended full-time, it increases to 66%. This is a rate of success equal to the USM's system-wide average for all full-time, first-time new freshmen (based on the most recent graduating cohort).
- Graduation rates for Maryland Community College students enrolled at USM's Regional Higher Education Centers continues to be impressive. The 4-year graduation rates for students who started in fall 2009 were 76% for Hagerstown and 75% for Shady Grove, surpassing the success rates of full-time transfers to USM institutions overall.

## **Background**

The following report provides data on demographic characteristics, enrollment status, enrollment trends, and graduation rates for transfer students to institutions in the University System of Maryland. Most of the data supplied in this report were extracted from the 2013 Transfer Student System (TSS) data file.<sup>1</sup> The TSS was originally designed by the Maryland Higher Education Commission (MHEC), the University System of Maryland (USM), and the Maryland community colleges to provide feedback to the community colleges about the success of their students. The TSS from USM institutions also collects data on students who transferred across USM institutions, from other Maryland institutions, and from out-of-state institutions. Those data are presented in tables that appear in the appendix of this report.

The data affirm that transfer students are a vital and growing segment of our undergraduate population. Because all TSS data are continuously updated by the institutions, the information contained in this report is not comparable to information found in reports from prior years. The information in this report reflects the most recent updates to data from FY 2009 through FY 2013.

For further information, please contact Chad Muntz, [cmuntz@usmd.edu](mailto:cmuntz@usmd.edu), 301-445-2737 or Becky Bell, [rbell@usmd.edu](mailto:rbell@usmd.edu), 301-405-2779.

## **First-time Transfers to USM<sup>2</sup>**

First-time transfers make up a substantial part of newly enrolled undergraduate students at USM institutions. Approximately 21,900 students transferred into USM institutions in FY 2013 (including summer 2012, fall 2012, and spring 2013 semesters) an increase of 500 transfers from FY 2012. Over half of the students who transferred to a USM institution came from a Maryland community college.

For the non-Maryland community college transfers, the “other transfers” included students transferring from other Maryland 4-year institutions as well as 2-year and 4-year out-of-state institutions. In total, the “other transfers” category is nearly 10,000 students, with over 8,000 of these transferring to the USM from out-of-state institutions. The vast majority (72%) of the 10,000 “other transfers” enrolled at UMUC.

The focus on this report will be the Maryland Community College transfers. Institutions have cultivated strong relationships and created strong articulation pathways including 2+2 programs to USM regional centers. Unlike UMUC, Maryland Community College transfers are the vast majority (72%) of the fiscal year transfers to the USM’s traditional institutions.

---

<sup>1</sup> The TSS data files were matched with the fall Enrollment Information System (EIS) data files to provide additional information on enrollment status and student level upon entry.

<sup>2</sup> First-time transfers are defined as students transferring for the first time from a higher education institution with 12 or more credits.

## **First-Time Community College Transfers to the USM in FY 2013**

### ***Enrollment Growth***

Nearly 12,000 new students transferred from a Maryland community college to a USM institution in FY 2013. Over the past 5 years (FY 2009 – FY 2013), the number of new Maryland community college transfer students has grown 25 percent from 9,468 to 11,882. Those institutions experiencing the most growth in transfers over the past five years were Towson (+959), UMUC (+539), UMBC (+359), UMCP (+272), Salisbury (+184), Frostburg (+89), UMES (+43), UMB (+15), and Bowie (+13). Coppin (-3) and UB (-103) had fewer community college transfers in FY 2013 than FY 2009.

### ***Selected Demographics***

African-American students made up 23 percent of the transfer students from Maryland community colleges entering USM institutions in FY 2013, while Hispanic students comprised seven percent (7%). However, this latter group easily represented the fastest growing segment of the USM community college transfer population, growing 81% over the past five years. Finally, the proportion of community college transfers who were white increased slightly, but, for the second year in a row, represented half (50%) of the community college transfers entering a USM institution. White transfers have steadily decreased as a proportion of the community college student body since FY 2000, when they represented 61% of community college.

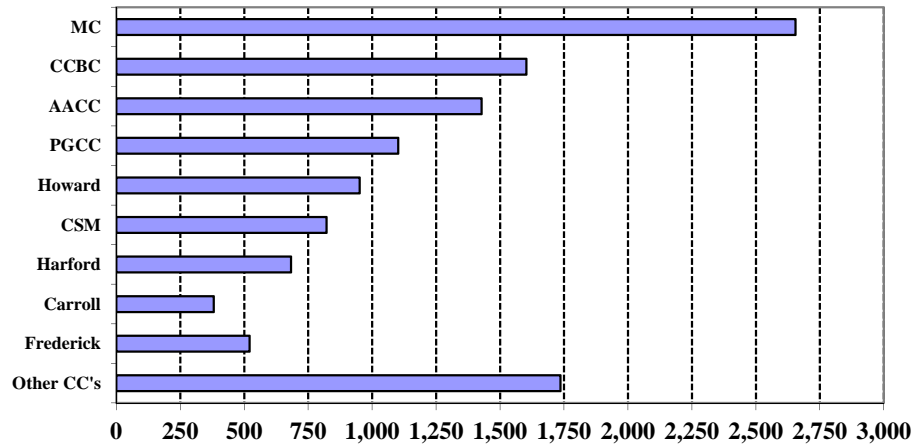
### ***Transfer and Enrollment Patterns***

Most of the Maryland community college students transferring to the USM in FY 2013 came from just six of the state's 16 public two-year institutions, all located within or close to the Baltimore-Washington Region (See Figure 1). The proportion of transfer students coming from institutions on the outskirts of the Baltimore-Washington region (Frederick, Cecil, Harford, Carroll, Hagerstown, the College of Southern Maryland, and Chesapeake) currently represent just 27% of the Maryland community college transfers but have increased their overall share by 46% over the past five years. Reversing its five-year trend of steady decreases, BCCC increased the number of transfers by 33 over FY 2012.

The five USM institutions enrolling the largest share of new Maryland community college transfers were: Towson (2,848), UMUC (2,840), UMCP (1,930), UMBC (1,418), and Salisbury (841). Together, these five institutions enrolled 83 percent of all Maryland community college transfers to the USM in FY 2013.



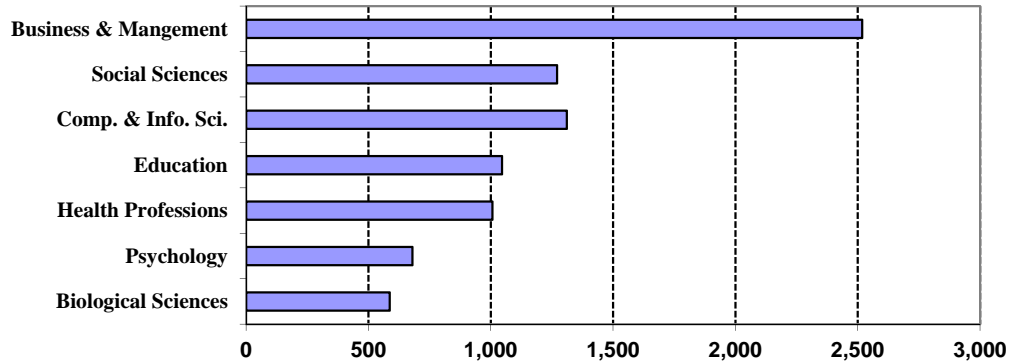
**Figure 1**  
**Maryland Community College Transfers to USM Institutions**  
**FY 2013**



***Programs of Study***

Of the Maryland community college students who transferred to a USM institution in FY 2013, 21% entered programs in business and management, 11% in the social sciences, 11% in computer and information science, 9% in education, 8% in the health professions, 6% in Psychology, and 5% in Biological Sciences. Five percent of these students had an undeclared major.

**Figure 2**  
**Maryland Community College Transfers to USM Institutions**  
**By Program Area at Time of Transfer**  
**FY 2012**



***Fall Attendance Patterns and Student Level***

Sixty-four percent of all Maryland community college students who transferred to USM institutions in FY 2013 did so in the fall 2012 semester (down from 67% last year). Of those community college transfer students who entered in fall 2012, 73 percent attended on a full-time basis, an increase of two percent. A positive trend has been the percentage of African-American transfer students attending full-time, which increased five percent to 65 percent but remained

below the 78 percent level for white transfer students. Students that attend at a full-time status are more likely to complete within 4 years.

The largest proportion of Maryland community college students who transferred to USM institutions in FY 2013 entered as either sophomores or juniors; the 82% of transfers entering at the sophomore/junior level is a five year high. For Fiscal 2013, 75% of African-American community college transfer students entered as sophomores or juniors (+7% over last year) compared to 87% of white students. The percentage of students entering with more credits is a positive one because it contributes to decreased time to degree, increased efficiency, and higher success rates.

### ***Graduation Rates***

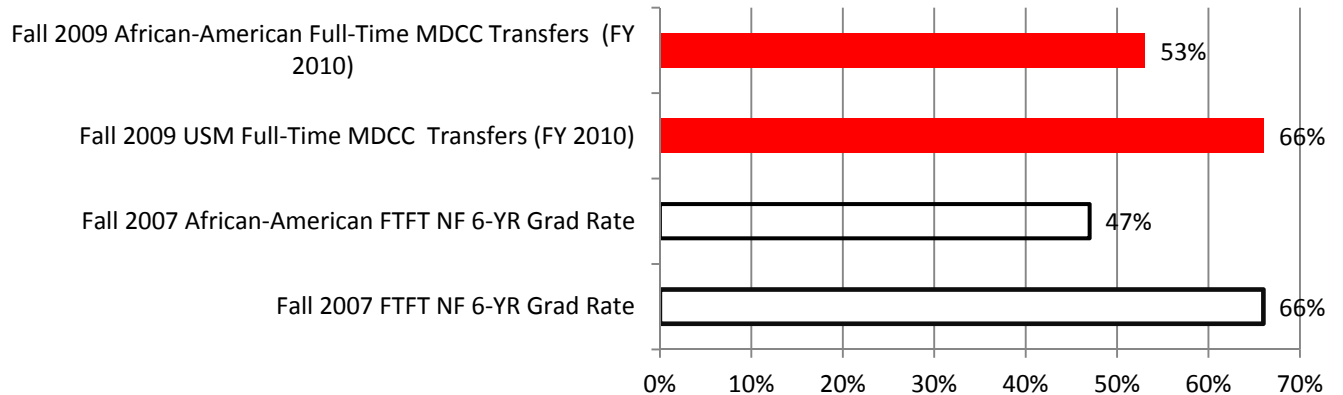
Of those Maryland community college transfers who enrolled in FY 2010, 52% graduated within four years from any USM institution. The graduation rate of Maryland community college transfers to the USM after four years was below that of first-time, full-time new freshmen after six years (the 6-year graduation rate of the fall 2007 new freshmen cohort was 66% anywhere at USM). However, given the fact that the transfer rate includes those attending part time as well as full time, this lower graduation rate is to be expected.

Attendance status appeared to impact graduation rates for transfer students significantly. Transfers students attending part time made up 30% of the fall 2009 student cohort in FY 2010. If the four-year graduation rate excluded these part-time students, however, and was calculated using only those transfers who attended full time, the graduation rate was higher than for the new transfer cohort (66% rate for the fall 2009 full time Maryland community college transfers comparable to the 66% rate of the fall 2007 full time new freshmen six year rate anywhere at USM).

Of those African-American community college transfers who enrolled at a USM institution in FY 2010, 38% graduated within four years. In total, 42% of the African-American community college transfers attended part-time, of which the largest proportion are UMUC students. After removing part-time students, the fall 2009 African-American transfer 4-year graduation rate increased to 53%, which was six points higher than the fall 2007 first-time full-time African American new freshmen cohort at any USM institution.

The lower overall community college transfer graduation rate is mostly explained by the large numbers of part-time community college transfer students (Appendix Table 10). Although there has been a significant portion of Maryland Community College Students attending part time, in recent years, the portion of full time students has been increasing. This is encouraging because the future time-to-degree ratio for students will be positively affected by the addition of more full-time transfer students, as well as other improvements in efficiency that contribute to increases in degree production.

**Figure 3**  
**Maryland Community College Transfers and USM New Freshmen Graduation Rates**  
**At Any USM Institution**  
**(New Transfer 4 Year VS New Freshmen 6 Year)**



***Regional Centers—Universities at Shady Grove and USM-Hagerstown***

Another avenue of success for Maryland community college transfers is enrolling in programs at the USM regional centers. The first cohort available to measure the four-year graduation rate was the FY 2009 group of transfers who registered for at least one course at one of the regional centers. For the purposes of this analysis, the regional center cohort was defined as any Maryland community college transfer who enrolled in at least one regional center course in the fall semester of the fiscal year of transfer. The graduation rates for these students are found in the Appendix Table 10. It is important to note that the students identified in these cohorts are a subset of the total population of Maryland community college transfers who have been identified and discussed earlier in this report. It is also important to note that the regional center students are, and will continue to be, included in the institutional numbers presented in previous sections of this report, as they have been in all previous transfer reports.

As the data show (refer to Table 10), the number of Maryland community college transfers at the two regional centers has been growing. The graduation rates are also encouraging, with over 40 percent of the cohort graduating within two years for both Hagerstown and Shady Grove (compared to a rate of 11 percent for transfers at USM campuses overall). The most recent four-year graduation data available for analysis was the FY 2010 cohort of students that began in fall 2009. Based on this cohort, the data showed a four-year graduation rate of 76% for Hagerstown and 75% for Shady Grove. This finding means that students taking courses at the regional centers are graduating at the same or higher rates than first-time, full-time new freshmen for USM institutions overall (the rate for the fall 2007 cohort of first-time, full-time freshmen was 66% at any USM institution) and at the same a higher rate than for those Maryland community college transfers attending full time (the rate for the USM as a whole was 66%). Thus, the regional centers have increased not just the capacity of the USM but its overall efficiency as well.

# APPENDIX

Table 1  
 University System of Maryland Transfer Students  
 By Type of Institution Transferred From  
 FY 2013

**Number of Transfers**

	MD Comm Coll.	USM Inst.	MSU or SMCM	MD Private	Out-of-State	Total Transfers
Bowie	353	59	23	11	258	704
Coppin	238	30	18	11	116	413
Frostburg	412	32	2	4	234	684
Salisbury	841	77	5	32	161	1,116
Towson	2,848	115	25	56	411	3,455
UB	690	80	19	28	173	990
UMB	177	78	3	8	118	384
UMBC	1,418	137	18	38	346	1,957
UMCP	1,930	212	8	25	515	2,690
UMES	135	35	1	6	61	238
UMUC	2,840	478	57	63	5,820	9,258
USM	11,882	1,333	179	282	8,213	21,889

**Percent of Transfers**

	MD Comm Coll.	USM Inst.	MSU or SMCM	MD Private	Out-of-State	Total Transfers
Bowie	50%	8%	3%	2%	37%	100%
Coppin	58%	7%	4%	3%	28%	100%
Frostburg	60%	5%	0%	1%	34%	100%
Salisbury	75%	7%	0%	3%	14%	100%
Towson	82%	3%	1%	2%	12%	100%
UB	70%	8%	2%	3%	17%	100%
UMB	46%	20%	1%	2%	31%	100%
UMBC	72%	7%	1%	2%	18%	100%
UMCP	72%	8%	0%	1%	19%	100%
UMES	57%	15%	0%	3%	26%	100%
UMUC	31%	5%	1%	1%	63%	100%
USM	54%	6%	1%	1%	38%	100%

Note: Transfers are the number of undergraduates enrolled for the first time with 12 or more credits.

MSU=Morgan State University; SMCM=St. Mary's College of Maryland

Source: TSS

Table 2  
University System of Maryland  
First-time Transfers to USM Institutions  
FY 2009 - 2013 Cohorts

	FY 2009	FY 2010	FY 2011	FY 2012	FY 2013	FY 09-13 Δ Chg.
MD Comm College % of Total	9,468 51%	9,456 50%	10,029 52%	11,033 52%	11,882 54%	25%
USM Institutions % of Total	1,279 7%	1,378 7%	1,432 7%	1,405 7%	1,333 6%	4%
MSU & SMCM % of Total	154 1%	135 1%	139 1%	183 1%	179 1%	16%
Md Private Inst. % of Total	181 1%	209 1%	194 1%	260 1%	282 1%	56%
Out-of-State Inst. & Unk % of Total	7,547 41%	7,656 41%	7,448 39%	8,407 39%	8,213 38%	9%
Total % of Total	18,629 100%	18,834 100%	19,242 100%	21,288 100%	21,889 100%	17%

MSU=Morgan State University; SMCM=St. Mary's College of Maryland

Source: TSS

Table 3  
University System of Maryland  
Maryland Community College Transfers by Ethnicity  
FY 2009 - FY 2013

	FY 2009	FY 2010	FY 2011*	FY 2012*	FY 2013*	FY 09-13 Δ Chg.
African-American % of Total	2,231 24%	2,266 24%	2,275 23%	2,614 24%	2,773 23%	24%
Hispanic % of Total	473 5%	507 5%	707 7%	957 9%	857 9%	81%
Other Minority % of Total	835 9%	795 8%	1,070 11%	1,283 12%	1,337 12%	60%
White % of Total	4,766 50%	4,808 51%	5,384 54%	5,396 49%	5,910 49%	24%
Other/Unknown % of Total	1,163 12%	1,080 11%	593 6%	783 7%	1,005 7%	-14%
Total % of Total	9,468 100%	9,456 100%	10,029 100%	11,033 100%	11,882 100%	25%

Note: Other includes foreign students

\* Race/Ethnicity categories were changed to align with new federal guidelines. Starting in FY 2011, Other Minority includes American Indians, Pacific Islanders, Asians and students of multiple races.

Source: TSS

Table 4  
University System of Maryland  
Maryland Community College Transfers By Institution  
FY 2009 - 2013 Cohorts

	FY 2009	FY 2010	FY 2011	FY 2012	FY 2013	Avg. Annual Change	FY 12-13 Δ Chg.
Bowie	292	279	238	315	353	3.9%	12%
Coppin	242	199	200	236	238	-0.3%	1%
Frostburg	323	344	354	379	412	5.0%	9%
Salisbury	657	632	673	736	841	5.1%	14%
Towson	1,889	1,607	2,017	2,430	2,848	8.6%	17%
UB	793	753	664	654	690	-2.7%	6%
UMB	162	164	128	137	177	1.8%	29%
UMBC	1,059	1,181	1,267	1,368	1,418	6.0%	4%
UMCP	1,658	1,578	1,665	1,695	1,930	3.1%	14%
UMES	92	97	73	86	135	8.0%	57%
UMUC	2,301	2,622	2,750	2,997	2,840	4.3%	-5%
USM	9,468	9,456	10,029	11,033	11,882	4.6%	8%

Source: TSS

Table 5  
University System of Maryland  
Maryland Community College Transfers By Sending Institution  
FY 2009 - FY 2013

	FY 2009	FY 2010	FY 2011	FY 2012	FY 2013	Avg. Annual Change	FY 12-13 Δ Chg.
Allegany	110	142	146	150	154	7.0%	3%
Anne Arundel	1,279	1,175	1,349	1,373	1,428	2.2%	4%
Baltimore City	452	438	364	348	381	-3.4%	9%
Carroll	279	222	291	525	606	16.8%	15%
CCBC	1,408	1,405	1,430	1,504	1,603	2.6%	7%
Cecil	71	76	101	92	111	9.3%	21%
CSM	635	693	702	751	822	5.3%	9%
Chesapeake	159	185	159	188	198	4.5%	5%
Frederick	372	372	430	466	521	7.0%	12%
Garrett	54	70	54	104	142	21.3%	37%
Hagerstown	173	170	200	218	217	4.6%	0%
Harford	475	481	540	676	683	7.5%	1%
Howard	675	671	716	860	951	7.1%	11%
Montgomery	2,287	2,241	2,409	2,465	2,655	3.0%	8%
Prince George's	872	889	912	1,083	1,102	4.8%	2%
Wor-Wic	167	226	226	230	308	13.0%	34%
Total	9,468	9,456	10,029	11,033	11,882	4.6%	8%

Source: TSS

Table 6  
 University System of Maryland  
 Maryland Community College Transfers By Institution  
 2013 Cohort

Sending Inst	Receiving Institution											USM
	Bowie	Coppin	Frostburg	Salisbury	Towson	UB	UMB	UMBC	UMCP	UMES	UMUC	
Allegany	1	0	118	2	12	0	2	3	2	1	13	154
Anne Arundel	28	8	22	90	294	69	35	227	220	8	427	1,428
Baltimore City	6	107	4	2	46	105	8	30	7	6	60	381
Carroll	1	1	0	24	447	25	2	48	27	0	31	606
CCBC	8	76	1	26	654	261	22	294	52	6	203	1,603
Cecil	1	1	8	27	43	4	3	6	4	1	13	111
CSM	28	2	0	89	124	12	3	41	133	7	383	822
Chesapeake	3	0	5	105	22	0	2	8	8	4	41	198
Frederick	1	2	54	51	101	10	11	61	96	4	130	521
Garrett	0	0	46	0	85	0	0	0	1	0	10	142
Hagerstown	2	0	68	21	37	7	2	8	15	1	56	217
Harford	1	8	16	45	352	52	7	52	65	2	83	683
Howard	18	11	20	42	226	41	16	235	195	5	142	951
Montgomery	32	4	36	83	308	91	55	353	952	42	699	2,655
Prince George's	222	18	14	21	78	12	7	50	149	18	513	1,102
Wor-Wic	1	0	0	213	19	1	2	2	4	30	36	308
<b>Total</b>	<b>353</b>	<b>238</b>	<b>412</b>	<b>841</b>	<b>2,848</b>	<b>690</b>	<b>177</b>	<b>1,418</b>	<b>1,930</b>	<b>135</b>	<b>2,840</b>	<b>11,882</b>

Source: TSS



Table 7  
 University System of Maryland  
 Maryland Community College Transfer Student Program Area  
 FY 2009 - 2013 Cohorts

	FY 2009	FY 2010	FY 2011	FY 2012	FY 2013	FY 13 % of total	FY 09-13 Δ Chg.
Agric. & Nat. Res.	89	83	122	110	138	1%	55%
Arch. & Env'tl. Des.	0	0	0	0	0	0%	--
Area Studies	26	25	22	18	30	0%	15%
Biological Sciences	483	458	400	568	587	5%	22%
Business Managmt.	2,333	2,182	2,221	2,421	2,518	21%	8%
Communications	375	388	394	501	548	5%	46%
Comp. & Info. Sci.	754	859	1,030	1,249	1,311	11%	74%
Education	704	746	785	900	1,046	9%	49%
Engineering	230	245	277	266	348	3%	51%
Fine & Applied Arts	242	267	307	322	338	3%	40%
Foreign Languages	56	54	47	57	65	1%	16%
Health Professions	626	576	661	787	1,007	8%	61%
Home Economics	46	34	28	24	23	0%	-50%
Law	110	98	108	98	74	1%	-33%
Letters	299	278	287	276	294	2%	-2%
Mathematics	66	72	59	91	116	1%	76%
Physical Science	89	102	112	101	113	1%	27%
Psychology	514	542	641	699	680	6%	32%
Public Affairs	413	433	419	451	485	4%	17%
Social Sciences	1,073	1,241	1,238	1,264	1,271	11%	18%
Interdisciplinary Studies	299	282	300	196	249	2%	-17%
Natural Sci. Tech.	5	3	3	10	11	0%	120%
Undeclared	636	488	568	624	630	5%	-1%
<b>Total</b>	<b>9,468</b>	<b>9,456</b>	<b>10,029</b>	<b>11,033</b>	<b>11,882</b>	<b>100%</b>	<b>25%</b>

Source: TSS

Table 8  
 University System of Maryland  
 Maryland Community College Transfers Attendance Patterns  
 FY 2009 - 2013 Cohorts

All Transfer Students					
	Fall 2008	Fall 2009	Fall 2010	Fall 2011	Fall 2012
Full-Time					
N	4,479	4,294	4,783	5,264	5,556
%	70%	70%	70%	72%	73%
Part-Time					
N	1,947	1,867	2,032	2,090	2,010
%	30%	30%	30%	28%	27%
Total	6,426	6,161	6,815	7,354	7,566

African-American Transfer Students					
	Fall 2008	Fall 2009	Fall 2010	Fall 2011	Fall 2012
Full-Time					
N	861	848	849	1,131	1,222
%	58%	58%	57%	60%	65%
Part-Time					
N	635	620	637	742	647
%	42%	42%	43%	40%	35%
Total	1,496	1,468	1,486	1,873	1,869

White Transfer Students					
	Fall 2008	Fall 2009	Fall 2010	Fall 2011	Fall 2012
Full-Time					
N	2,547	2,430	2,849	2,925	2,988
%	76%	76%	76%	76%	78%
Part-Time					
N	818	780	913	936	843
%	24%	24%	24%	24%	22%
Total	3,365	3,210	3,762	3,861	3,831

Note: Attendance status is based upon the EIS file and only reflects students who transferred in the Fall term. The totals are less than reported elsewhere in this report.  
 Source: EIS and TSS

Table 9  
University System of Maryland  
Maryland Community College Transfer Student Level  
FY 2009 - 2013 Cohorts

**Number of Transfer Students**

	All Transfer Students				
	Fall 2008	Fall 2009	Fall 2010	Fall 2011	Fall 2012
Freshmen	1,121	1,119	1,106	1,381	1,115
Sophomore	2,475	2,229	2,486	2,538	2,741
Junior	2,663	2,651	3,013	3,272	3,473
Senior	107	117	158	188	221
Unclassified	60	45	52	58	16
<b>Total</b>	<b>6,426</b>	<b>6,161</b>	<b>6,815</b>	<b>7,437</b>	<b>7,566</b>

**Percent of Transfer Students**

	All Transfer Students				
	Fall 2008	Fall 2009	Fall 2010	Fall 2011	Fall 2012
Freshmen	17%	18%	16%	19%	15%
Sophomore	39%	36%	36%	34%	36%
Junior	41%	43%	44%	44%	46%
Senior	2%	2%	2%	3%	3%
Unclassified	1%	1%	1%	1%	0%
<b>Total</b>	<b>100%</b>	<b>100%</b>	<b>100%</b>	<b>100%</b>	<b>100%</b>

**African-American Transfer Students**

	African-American Transfer Students				
	Fall 2008	Fall 2009	Fall 2010	Fall 2011	Fall 2012
Freshmen	371	368	377	498	424
Sophomore	481	471	461	590	664
Junior	597	578	593	716	730
Senior	30	33	43	48	45
Unclassified	17	18	12	21	6
<b>Total</b>	<b>1,496</b>	<b>1,468</b>	<b>1,486</b>	<b>1,873</b>	<b>1,869</b>

**African-American Transfer Students**

	African-American Transfer Students				
	Fall 2008	Fall 2009	Fall 2010	Fall 2011	Fall 2012
Freshmen	25%	25%	25%	27%	23%
Sophomore	32%	32%	31%	32%	36%
Junior	40%	39%	40%	38%	39%
Senior	2%	2%	3%	3%	2%
Unclassified	1%	1%	1%	1%	0%
<b>Total</b>	<b>100%</b>	<b>100%</b>	<b>100%</b>	<b>100%</b>	<b>100%</b>

**White Transfer Students**

	White Transfer Students				
	Fall 2008	Fall 2009	Fall 2010	Fall 2011	Fall 2012
Freshmen	505	489	469	569	389
Sophomore	1,411	1,221	1,432	1,364	1,412
Junior	1,381	1,423	1,763	1,815	1,918
Senior	46	57	69	91	105
Unclassified	22	20	29	22	7
<b>Total</b>	<b>3,365</b>	<b>3,210</b>	<b>3,762</b>	<b>3,861</b>	<b>3,831</b>

**White Transfer Students**

	White Transfer Students				
	Fall 2008	Fall 2009	Fall 2010	Fall 2011	Fall 2012
Freshmen	15%	15%	12%	15%	10%
Sophomore	42%	38%	38%	35%	37%
Junior	41%	44%	47%	47%	50%
Senior	1%	2%	2%	2%	3%
Unclassified	1%	1%	1%	1%	0%
<b>Total</b>	<b>100%</b>	<b>100%</b>	<b>100%</b>	<b>100%</b>	<b>100%</b>

Note: Attendance status is based upon the EIS file and only reflects students who transferred in the Fall term. The totals are less than reported elsewhere in this report.

Source: EIS and TSS

Table 10  
 University System of Maryland  
 Maryland Community College Transfer Student Four-Year Graduation Rates  
 FY 2003 - 2012 Cohorts

**Number of Community College Transfers**

	Cohort Size	Graduation Rates			
		2-year	3-year	4-year	5-year
<b>USM</b>					
FY 2003	7,063	644	2,447	3,598	4,095
FY 2004	7,706	769	2,733	3,959	4,487
FY 2005	8,048	821	2,696	3,888	4,437
FY 2006	8,526	890	2,987	4,210	4,676
FY 2007	8,974	920	3,004	4,299	4,928
FY 2008	8,993	969	3,188	4,575	5,169
FY 2009	9,468	1,134	3,544	4,984	5,609
FY 2010	9,456	1,120	3,488	4,917	
FY 2011	10,029	1,239	3,961		
FY 2012	11,033	1,483			
<b>USM w/out UMUC</b>					
FY 2003	5,626	563	2,170	3,166	3,570
FY 2004	5,950	661	2,369	3,401	3,807
FY 2005	6,190	720	2,354	3,343	3,770
FY 2006	6,471	794	2,647	3,716	4,089
FY 2007	6,603	809	2,660	3,791	4,236
FY 2008	6,875	878	2,867	4,045	4,487
FY 2009	7,167	1,004	3,111	4,309	4,778
FY 2010	6,834	983	2,989	4,145	
FY 2011	7,279	1,051	3,370		
FY 2012	8,036	1,248			
<b>Bowie</b>					
FY 2003	340	33	109	166	198
FY 2004	264	25	90	138	160
FY 2005	453	29	89	149	185
FY 2006	290	17	77	130	154
FY 2007	281	29	84	133	159
FY 2008	302	26	81	127	159
FY 2009	292	16	72	127	154
FY 2010	279	16	76	126	
FY 2011	238	17	66		
FY 2012	315	26			
<b>Coppin</b>					
FY 2003	140	6	24	43	53
FY 2004	132	8	24	43	57
FY 2005	197	12	54	77	91
FY 2006	219	4	33	74	89
FY 2007	214	7	35	60	80
FY 2008	199	18	51	80	103
FY 2009	242	15	40	76	102
FY 2010	199	18	55	73	
FY 2011	200	35	72		
FY 2012	236	37			

**Percent Graduating**

	Graduation Rates			
	2-year	3-year	4-year	5-year
<b>USM</b>				
FY 2003	9%	35%	51%	58%
FY 2004	10%	35%	51%	58%
FY 2005	10%	33%	48%	55%
FY 2006	10%	35%	49%	55%
FY 2007	10%	33%	48%	55%
FY 2008	11%	35%	51%	57%
FY 2009	12%	37%	53%	59%
FY 2010	12%	37%	52%	
FY 2011	12%	39%		
FY 2012	13%			
<b>USM w/out UMUC</b>				
FY 2003	10%	39%	56%	63%
FY 2004	11%	40%	57%	64%
FY 2005	12%	38%	54%	61%
FY 2006	12%	41%	57%	63%
FY 2007	12%	40%	57%	64%
FY 2008	13%	42%	59%	65%
FY 2009	14%	43%	60%	67%
FY 2010	14%	44%	61%	
FY 2011	14%	46%		
FY 2012	16%			
<b>Bowie</b>				
FY 2003	10%	32%	49%	58%
FY 2004	9%	34%	52%	61%
FY 2005	6%	20%	33%	41%
FY 2006	6%	27%	45%	53%
FY 2007	10%	30%	47%	57%
FY 2008	9%	27%	42%	53%
FY 2009	5%	25%	43%	53%
FY 2010	6%	27%	45%	
FY 2011	7%	28%		
FY 2012	8%			
<b>Coppin</b>				
FY 2003	4%	17%	31%	38%
FY 2004	6%	18%	33%	43%
FY 2005	6%	27%	39%	46%
FY 2006	2%	15%	34%	41%
FY 2007	3%	16%	28%	37%
FY 2008	9%	26%	40%	52%
FY 2009	6%	17%	31%	42%
FY 2010	9%	28%	37%	
FY 2011	18%	36%		
FY 2012	16%			

Table 10  
 University System of Maryland  
 Maryland Community College Transfer Student Four-Year Graduation Rates  
 FY 2003 - 2012 Cohorts

**Number of Community College Transfers**

	Cohort Size	Graduation Rates			
		2-year	3-year	4-year	5-year
<b>Frostburg</b>					
FY 2003	335	41	119	176	198
FY 2004	285	33	106	152	165
FY 2005	268	26	104	144	160
FY 2006	277	37	112	152	172
FY 2007	283	41	120	165	181
FY 2008	313	61	150	199	220
FY 2009	323	68	147	198	212
FY 2010	344	61	155	202	
FY 2011	354	67	177		
FY 2012	379	77			
<b>Salisbury</b>					
FY 2003	559	49	233	353	390
FY 2004	519	66	224	331	363
FY 2005	513	50	202	314	348
FY 2006	569	61	253	365	402
FY 2007	601	57	251	371	402
FY 2008	524	76	270	361	387
FY 2009	657	100	319	444	478
FY 2010	632	99	300	430	
FY 2011	673	92	311		
FY 2012	736	130			
<b>Towson</b>					
FY 2003	1,214	128	550	763	851
FY 2004	1,335	149	594	837	907
FY 2005	1,429	167	607	863	960
FY 2006	1,483	178	666	909	1001
FY 2007	1,630	211	706	1027	1116
FY 2008	1,729	223	758	1077	1179
FY 2009	1,889	274	871	1188	1315
FY 2010	1,607	258	775	1051	
FY 2011	2,017	300	1001		
FY 2012	2,430	419			
<b>UB</b>					
FY 2003	490	56	191	243	274
FY 2004	616	67	216	285	324
FY 2005	677	70	206	280	330
FY 2006	902	108	316	412	464
FY 2007	872	94	288	389	448
FY 2008	843	85	282	402	456
FY 2009	793	76	290	381	440
FY 2010	753	82	279	382	
FY 2011	664	55	243		
FY 2012	654	61			

**Percent Graduating**

	Graduation Rates			
	2-year	3-year	4-year	5-year
<b>Frostburg</b>				
FY 2003	12%	36%	53%	59%
FY 2004	12%	37%	53%	58%
FY 2005	10%	39%	54%	60%
FY 2006	13%	40%	55%	62%
FY 2007	14%	42%	58%	64%
FY 2008	19%	48%	64%	70%
FY 2009	21%	46%	61%	66%
FY 2010	18%	45%	59%	
FY 2011	19%	50%		
FY 2012	20%			
<b>Salisbury</b>				
FY 2003	9%	42%	63%	70%
FY 2004	13%	43%	64%	70%
FY 2005	10%	39%	61%	68%
FY 2006	11%	44%	64%	71%
FY 2007	9%	42%	62%	67%
FY 2008	15%	52%	69%	74%
FY 2009	15%	49%	68%	73%
FY 2010	16%	47%	68%	
FY 2011	14%	46%		
FY 2012	18%			
<b>Towson</b>				
FY 2003	11%	45%	63%	70%
FY 2004	11%	44%	63%	68%
FY 2005	12%	42%	60%	67%
FY 2006	12%	45%	61%	67%
FY 2007	13%	43%	63%	68%
FY 2008	13%	44%	62%	68%
FY 2009	15%	46%	63%	70%
FY 2010	16%	48%	65%	
FY 2011	15%	50%		
FY 2012	17%			
<b>UB</b>				
FY 2003	11%	39%	50%	56%
FY 2004	11%	35%	46%	53%
FY 2005	10%	30%	41%	49%
FY 2006	12%	35%	46%	51%
FY 2007	11%	33%	45%	51%
FY 2008	10%	33%	48%	54%
FY 2009	10%	37%	48%	55%
FY 2010	11%	37%	51%	
FY 2011	8%	37%		
FY 2012	9%			

Table 10  
 University System of Maryland  
 Maryland Community College Transfer Student Four-Year Graduation Rates  
 FY 2003 - 2012 Cohorts

Number of Community College Transfers						Percent Graduating				
	Cohort Size	Graduation Rates					Graduation Rates			
		2-year	3-year	4-year	5-year		2-year	3-year	4-year	5-year
<b>UMB</b>						<b>UMB</b>				
FY 2003	131	63	105	112	114	48%	80%	85%	87%	
FY 2004	149	73	119	122	123	49%	80%	82%	83%	
FY 2005	146	75	122	130	135	51%	84%	89%	92%	
FY 2006	136	67	116	122	125	49%	85%	90%	92%	
FY 2007	156	67	125	127	130	43%	80%	81%	83%	
FY 2008	164	60	130	137	137	37%	79%	84%	84%	
FY 2009	162	63	115	128	129	39%	71%	79%	80%	
FY 2010	164	77	129	135		47%	79%	82%		
FY 2011	128	51	93			40%	73%			
FY 2012	137	48				35%				
<b>UMBC</b>						<b>UMBC</b>				
FY 2003	1,094	48	316	504	593	4%	29%	46%	54%	
FY 2004	1,040	73	315	509	608	7%	30%	49%	58%	
FY 2005	1,030	83	324	502	578	8%	31%	49%	56%	
FY 2006	947	70	304	480	515	7%	32%	51%	54%	
FY 2007	961	69	307	453	558	7%	32%	47%	58%	
FY 2008	1,052	89	329	524	603	8%	31%	50%	57%	
FY 2009	1,059	83	350	548	627	8%	33%	52%	59%	
FY 2010	1,181	83	365	596		7%	31%	50%		
FY 2011	1,267	102	441			8%	35%			
FY 2012	1,368	117				8%				
<b>UMCP</b>						<b>UMCP</b>				
FY 2003	1,295	136	514	797	889	11%	40%	62%	69%	
FY 2004	1,486	165	651	943	1,050	11%	44%	63%	71%	
FY 2005	1,341	201	619	834	923	15%	46%	62%	69%	
FY 2006	1,571	246	750	1041	1127	16%	48%	66%	72%	
FY 2007	1,557	229	731	1046	1136	15%	47%	67%	73%	
FY 2008	1,652	232	784	1088	1188	14%	47%	66%	72%	
FY 2009	1,658	300	873	1175	1273	18%	53%	71%	77%	
FY 2010	1,578	280	830	1117		18%	53%	71%		
FY 2011	1,665	314	931			19%	56%			
FY 2012	1,695	319				19%				
<b>UMES</b>						<b>UMES</b>				
FY 2003	28	3	9	9	10	11%	32%	32%	36%	
FY 2004	124	2	30	41	50	2%	24%	33%	40%	
FY 2005	136	7	27	50	60	5%	20%	37%	44%	
FY 2006	77	6	20	31	40	8%	26%	40%	52%	
FY 2007	48	5	13	20	26	10%	27%	42%	54%	
FY 2008	97	8	32	50	55	8%	33%	52%	57%	
FY 2009	92	9	34	44	48	10%	37%	48%	52%	
FY 2010	97	9	25	33		9%	26%	34%		
FY 2011	73	18	35			25%	48%			
FY 2012	86	14				16%				

Table 10  
 University System of Maryland  
 Maryland Community College Transfer Student Four-Year Graduation Rates  
 FY 2003 - 2012 Cohorts

<b>Number of Community College Transfers</b>					
	Cohort Size	Graduation Rates			
		2-year	3-year	4-year	5-year
<b>UMUC</b>					
FY 2003	1,437	81	277	432	525
FY 2004	1,756	108	364	558	680
FY 2005	1,858	101	342	545	667
FY 2006	2,055	96	340	494	587
FY 2007	2,371	111	344	508	692
FY 2008	2,118	91	321	530	682
FY 2009	2,301	130	433	675	831
FY 2010	2,622	137	499	772	
FY 2011	2,750	188	591		
FY 2012	2,997	235			
<b>Hagerstown*</b>					
FY 2009	50	18	24	31	33
FY 2010	42	18	29	32	
FY 2011	71	29	46		
FY 2012	77	38			
<b>Shady Grove*</b>					
FY 2009	400	184	270	297	314
FY 2010	479	211	321	359	
FY 2011	438	200	299		
FY 2012	534	245			

<b>Percent Graduating</b>					
	Cohort Size	Graduation Rates			
		2-year	3-year	4-year	5-year
<b>UMUC</b>					
FY 2003		6%	19%	30%	37%
FY 2004		6%	21%	32%	39%
FY 2005		5%	18%	29%	36%
FY 2006		5%	17%	24%	29%
FY 2007		5%	15%	21%	29%
FY 2008		4%	15%	25%	32%
FY 2009		6%	19%	29%	36%
FY 2010		5%	19%	29%	
FY 2011		7%	21%		
FY 2012		8%			
<b>Hagerstown</b>					
FY 2009		36%	48%	62%	66%
FY 2010		43%	69%	76%	
FY 2011		41%	65%		
FY 2012		49%			
<b>Shady Grove</b>					
FY 2009		46%	68%	74%	79%
FY 2010		44%	67%	75%	
FY 2011		46%	68%		
FY 2012		46%			

Source: MHEC TSS and DIS files

\* USM Regional Center Files (EIS and Regional Center Registration) matched to TSS Cohorts in same fiscal year and institution only.

Table 11  
 University System of Maryland  
 Maryland Community College Transfer Student Four-Year Graduation Rates  
 FY 2010 Cohort

Receiving Inst	All Transfer Students		African-American Transfer Students		White Transfer Students	
	Cohort N	Four-Year Graduation Rate	Cohort N	Four-Year Graduation Rate	Cohort N	Four-Year Graduation Rate
Bowie	279	45%	234	43%	21	57%
Coppin	199	37%	176	36%	6	50%
Frostburg	344	59%	30	37%	297	61%
Salisbury	632	68%	31	68%	527	68%
Towson	1,607	65%	179	55%	1,116	69%
UB	753	51%	310	45%	272	54%
UMB	164	82%	30	83%	58	83%
UMBC	1,181	50%	191	39%	596	55%
UMCP	1,578	71%	233	66%	827	72%
UMES	97	34%	34	35%	45	22%
UMUC	2,622	29%	818	21%	1,043	33%
USM	9,456	52%	2,266	38%	4,808	58%

Source: TSS and DIS