



2017-18

PROFILE





2017-18 PROFILE UNIVERSITY SYSTEM OF MARYLAND

CONTENTS

- 2** ABOUT THE UNIVERSITY SYSTEM OF MARYLAND
- 3** EXCELLENCE AND INNOVATION
- 4** UNIVERSITY SYSTEM OF MARYLAND MAP
- 6** BOWIE STATE UNIVERSITY
- 7** COPPIN STATE UNIVERSITY
- 8** FROSTBURG STATE UNIVERSITY
- 9** SALISBURY UNIVERSITY
- 10** TOWSON UNIVERSITY
- 11** UNIVERSITY OF BALTIMORE
- 12** UNIVERSITY OF MARYLAND, BALTIMORE
- 13** UNIVERSITY OF MARYLAND, BALTIMORE COUNTY
- 14** UNIVERSITY OF MARYLAND, COLLEGE PARK
- 15** UNIVERSITY OF MARYLAND EASTERN SHORE
- 16** UNIVERSITY OF MARYLAND UNIVERSITY COLLEGE
- 17** UNIVERSITY OF MARYLAND CENTER FOR ENVIRONMENTAL SCIENCE
- 18** UNIVERSITIES AT SHADY GROVE
- 19** UNIVERSITY SYSTEM OF MARYLAND AT HAGERSTOWN
- 20** USM LEADERSHIP

ABOUT THE UNIVERSITY SYSTEM OF MARYLAND

The University System of Maryland (USM) is the state's public higher education system. USM's 12 institutions, two regional higher education centers, and system office work closely together to leverage their collective expertise and resources, share best practices, increase the system's effectiveness and efficiency, and advance USM's mission to improve the quality of life in Maryland.



BENEFITING STUDENTS, AS WELL AS MARYLAND AND ITS CITIZENS, USM:

- Offers expansive access to affordable, high-quality educational opportunities.
- Performs groundbreaking research.
- Instills a culture of innovation and entrepreneurship.
- Promotes economic growth and workforce development.
- Provides vital services to communities and individuals.
- Partners with business, government, nonprofits, and organizations to improve quality of life.

USM OVERVIEW*

Undergraduate Students: 130,398

Graduate Students: 41,598

Full-time Faculty: 8,759

Part-time Faculty: 9,081

Staff (various categories)**: 21,535

Facilities: 100 sites

Buildings: Nearly 1,000, including 20 libraries

Operating Budget: \$5.48 billion (FY 2018)

*Data throughout are from the USM Office of Administration and Finance and reflect data presented to the Board of Regents. Student enrollment data are for fall 2016. Students attending the regional higher education centers and research institution are enrolled at degree-granting institutions and are counted once, in their home institution's enrollment total. Faculty totals include instructional, research, and public service faculty.

Operating budget totals (including state appropriations, tuition and fees, and contract and grant revenue) are for FY 2018 and subject to revision.

These are the latest figures available at the time of publication.

**This figure includes full- and part-time staff (including graduate assistants). It does not include faculty.

EXCELLENCE AND INNOVATION



As a system of higher education, USM creates a dynamic environment that is helping to power Maryland, the nation, and the world forward. USM is a recognized leader in many areas. These include academic and research excellence, innovation, economic and workforce development, and the effective and efficient use of resources.

EDUCATIONAL OPPORTUNITIES

Highly ranked universities and programs, outstanding faculty and staff, and innovative academic models are all hallmarks of USM. Providing high-quality and affordable academic programs and increasing student retention and completion rates are among the system's top priorities. USM offers hundreds of undergraduate, graduate, professional, and certificate programs. Furthermore, USM's William E. Kirwan Center for Academic Innovation is researching, developing, and implementing strategies and practices to help increase students' academic success.

RESEARCH

USM faculty and staff continue to fuel research and discovery, attracting nearly \$1.3 billion in external grants and contracts annually. USM research is advancing understanding and practice in many areas, including bioinformatics, cybersecurity, environmental science, food science, photonics, social sciences, and vaccine development.

ECONOMIC AND WORKFORCE DEVELOPMENT

USM plays a major role in the state's and the region's economic and workforce development. USM institutions address critical workforce shortage areas, especially

those related to STEM (science, technology, engineering, and mathematics). USM institutions awarded 6,438 STEM bachelor's degrees—nearly 80 percent of the state's STEM degrees—in 2016. The system also advances commercialization and technology transfer. For example, USM institutions have facilitated the launch of 547 companies since 2011.

EFFECTIVE USE OF RESOURCES

Since the launch of its Effectiveness and Efficiency (E&E) Initiative in 2004, USM has saved \$546 million. In addition, USM leads the state in sustainability efforts with nearly 65 facilities constructed and/or planned as LEED-certified "Silver" or higher. In 2015, USM launched E&E 2.0, the next generation of the system's Efficiency and Effectiveness Initiative. E&E 2.0 aims to increase USM's positive impact on the state of Maryland, enhance student success, continue innovation in teaching and learning, reengineer administrative processes, and reduce costs.

SERVICE

Each year USM students, staff, and faculty contribute more than a million hours of service to the community through cultural programs, legal and medical clinics, partnerships with public schools and the business community, and other initiatives.

UNIVERSITY SYSTEM OF MARYLAND

USM institutions carry out collaborative research at four multidisciplinary centers: the Institute of Marine and Environmental Technology (IMET), the Institute of Fluorescence, and the Medical Biotechnology Center, all located in Baltimore; and the Institute for Bioscience and Biotechnology in Rockville.

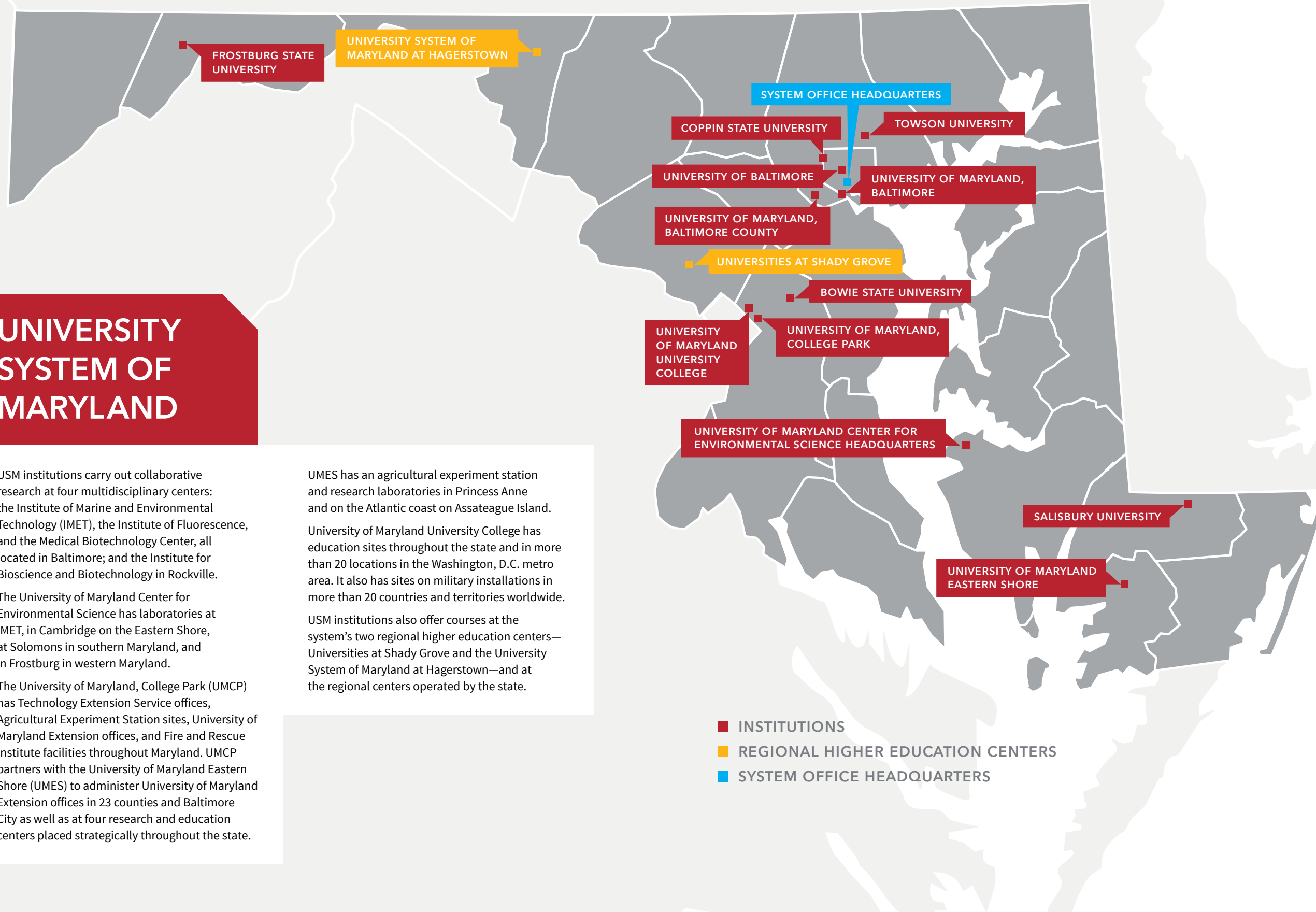
The University of Maryland Center for Environmental Science has laboratories at IMET, in Cambridge on the Eastern Shore, at Solomons in southern Maryland, and in Frostburg in western Maryland.

The University of Maryland, College Park (UMCP) has Technology Extension Service offices, Agricultural Experiment Station sites, University of Maryland Extension offices, and Fire and Rescue Institute facilities throughout Maryland. UMCP partners with the University of Maryland Eastern Shore (UMES) to administer University of Maryland Extension offices in 23 counties and Baltimore City as well as at four research and education centers placed strategically throughout the state.

UMES has an agricultural experiment station and research laboratories in Princess Anne and on the Atlantic coast on Assateague Island.

University of Maryland University College has education sites throughout the state and in more than 20 locations in the Washington, D.C. metro area. It also has sites on military installations in more than 20 countries and territories worldwide.

USM institutions also offer courses at the system's two regional higher education centers—Universities at Shady Grove and the University System of Maryland at Hagerstown—and at the regional centers operated by the state.



- INSTITUTIONS
- REGIONAL HIGHER EDUCATION CENTERS
- SYSTEM OFFICE HEADQUARTERS

BOWIE STATE UNIVERSITY

BOWIE STATE UNIVERSITY (BSU) provides emerging leaders with a strong foundation for success. As the oldest historically black institution in Maryland, BSU has a rich history of excellence in education that empowers students from diverse backgrounds to take charge of their future.

The university offers 22 bachelor's, 19 master's, and two doctoral degree programs, along with 14 graduate and advanced study certificates. Computer science, computer technology, business, nursing, biology, and education are just a few of the dynamic programs offered.

Ranked by *The Economist* as the "best value" among four-year schools in Maryland, Bowie State's award-winning faculty and state-of-the-art facilities ensure that students are ready to compete in the job market after graduation. From developing a startup in the entrepreneurship program to extracting and synthesizing DNA in the new multimillion-dollar science center, Bowie State students get the practical experience needed to excel in the real world.



As the oldest historically black institution in Maryland, Bowie State University has a rich history of excellence in education that empowers students from diverse backgrounds to take charge of their future.

LOCATION: Bowie

PRESIDENT: Aminta Breaux

FOUNDED: 1865

UNDERGRADUATE STUDENTS: 4,711

GRADUATE STUDENTS: 958

OPERATING BUDGET: \$126.1 million

FOR MORE INFORMATION: 301.860.4000

or www.bowiestate.edu



COPPIN STATE UNIVERSITY

Coppin State University provides a multigenerational learning environment that is nationally recognized for community engagement and producing graduates ready for the real world.



COPPIN STATE UNIVERSITY offers a multigenerational learning environment, nationally recognized for community engagement. Serving Baltimore residents as well as students from around the world, Coppin State proudly produces analytical, socially responsible, lifelong learners. A historically black institution founded in 1900, Coppin offers 32 undergraduate and 11 graduate degrees, along with nine certificate programs and a micro-credentialing badging program. Coppin's most recent advanced academic offering is the Doctor of Nursing Practice (DNP) program, which continues the university's long tradition of training dedicated and committed health care professionals.

Coppin prepares its students to be competitive in regional and global markets through its commitment to quality programs in teacher education, criminal justice, business, social sciences, information technology, nursing, allied health, health information management, STEM, and the liberal arts. Ranked among

the most "innovative small college business departments" by *Business Research Guide*, Coppin has a focus on experiential learning.

The university's state-of-the-art Science and Technology Center houses science programs and provides a technology-based learning environment anchored in west Baltimore. Coppin's Cradle-to-Career Continuum is viewed as smart, affordable, and relevant, generating graduates who are making a lasting impact on Baltimore communities and beyond.

LOCATION: Baltimore

PRESIDENT: Maria Thompson

FOUNDED: 1900

UNDERGRADUATE STUDENTS: 2,507

GRADUATE STUDENTS: 432

OPERATING BUDGET: \$93 million

FOR MORE INFORMATION: 410.951.3000

or www.coppin.edu

FROSTBURG STATE UNIVERSITY

FROSTBURG STATE UNIVERSITY (FSU) is a student-centered institution dedicated to providing transformative experiences as part of students' educational journey. This foundation launches its graduates to professional success, achieved not only through strong academics and experiential education, but also personal attention from knowledgeable faculty and staff. More than 100 innovative programs are offered at the undergraduate, master's, and doctoral levels at the campus in the beautiful western Maryland mountains, at sites around Maryland, and online.

MONEY magazine listed Frostburg as a "best value college," and *The Economist* and the Brookings Institution found that FSU graduates earned thousands more than those from similar schools. Frostburg was named the 2016 Public Institution of the Year by The Washington

Frostburg State University is one university—with a world of experiences. From small classes led by excellent professors to prestigious internships, exciting research, and abundant study abroad opportunities, Frostburg offers a quality, affordable education.

Center, America's largest academic internship program, and has been recognized as a College of Distinction, a Military Friendly School, and on the President's Honor Roll for Service. Most of its online programs are noted as "best buys" by GetEducated.com. FSU's emphasis on sustainability has been recognized with the Award for Institutional Excellence in Climate Leadership from Second Nature and earned it places on *Sierra* magazine's "Coolest Schools" list and in *The Princeton Review's* Guide to Green Colleges.



LOCATION: Frostburg
PRESIDENT: Ronald Nowaczyk
FOUNDED: 1898
UNDERGRADUATE STUDENTS: 4,884
GRADUATE STUDENTS: 792
OPERATING BUDGET: \$121.4 million
FOR MORE INFORMATION: 301.687.4000
or www.frostburg.edu

SALISBURY UNIVERSITY

Home to more than 8,700 students, **SALISBURY UNIVERSITY (SU)** has a reputation for excellence in public higher education. A leader in the American Association of State Colleges and Universities' "Reimagining the First Year" initiative, SU brings creativity to an undergraduate curriculum emphasizing research, study abroad, professional internships, and community engagement. Its graduate programs are expanding throughout Maryland and abroad.

SU alumni are national leaders in their fields, including Perdue Farms Chairman Jim Perdue, Atlanta Falcons Head Coach Dan Quinn, Warner Bros. Senior Vice President Barry Ziehl, and "Fearless Girl" sculptor Kristen Visbal. SU education graduates are regularly honored as Teachers of the Year, while the university's nursing and health professionals are sought by some of the nation's best hospitals.

SU built a tradition of student entrepreneurship long before the word was popular. Some \$300,000 is given annually to the university to fund business startups, expansion, and innovation. A \$5.5 million gift announced in 2017 will support the Perdue School of Business and a new Center for Entrepreneurship.

SU's impact on the Eastern Shore economy is estimated at nearly half a billion dollars annually. Active in downtown Salisbury's redevelopment, SU's arts programs have made the campus a regional cultural center. Sports enthusiasts cheer on SU's NCAA championship teams at state-of-the-art athletics complexes. Student scholars live and learn on the beautiful campus of more than 200 acres, which includes a new award-winning library as its academic hub.



Consistently ranked one of the nation's best in quality and value by *U.S. News & World Report*, *The Princeton Review*, and others, Salisbury University is a "Maryland University of National Distinction" that is educating its students and energizing the region with imagination and vision.

LOCATION: Salisbury
PRESIDENT: Janet Dudley-Eshbach
FOUNDED: 1925
UNDERGRADUATE STUDENTS: 7,861
GRADUATE STUDENTS: 887
OPERATING BUDGET: \$206.2 million
FOR MORE INFORMATION: 410.543.6000
or www.salisbury.edu

TOWSON UNIVERSITY

A significant business catalyst for the state of Maryland, **TOWSON UNIVERSITY (TU)** is the largest university in the Greater Baltimore region with an enrollment of over 22,000.

More than 93,000 of the university's 151,000 alumni live and work in Maryland and Washington, D.C., enhancing the region's economy and quality of life.

Towson University is consistently ranked by *U.S. News & World Report* as one of the nation's best and most efficiently run universities. *Kiplinger's Personal Finance* has ranked TU as one of the 100 "best values" among the nation's public colleges.

With a rich 150-year tradition, TU is one of the nation's best regional public universities, offering more than 100 degree programs.

Towson's interdisciplinary academic approach provides opportunities for undergraduate research, internships, and jobs.

TU is committed to making a positive impact and transforming lives through BTU: Partnerships at Work for Greater Baltimore, which aims to elevate the work of TU faculty and students to address the needs of the region.

The 329-acre suburban setting offers a diverse and inclusive campus that is nationally recognized for its strong minority graduation rates.

With 19 NCAA Division I sports, Towson is a member of the Colonial Athletic Association as well as the Colonial Academic Alliance. It is also just a bike ride from Baltimore.

Towson University is committed to making a positive impact and transforming lives through BTU: Partnerships at Work for Greater Baltimore, which aims to elevate the work of TU faculty and students to address the needs of the region.



LOCATION: Towson
PRESIDENT: Kim E. Schatzel
FOUNDED: 1866
UNDERGRADUATE STUDENTS: 19,198
GRADUATE STUDENTS: 3,145
OPERATING BUDGET: \$500.1 million
FOR MORE INFORMATION: 410.704.2000
 or www.towson.edu

UNIVERSITY OF BALTIMORE

Located in Baltimore's Mount Vernon cultural district, the **UNIVERSITY OF BALTIMORE (UB)** offers undergraduate, graduate, and professional programs in business, law, public affairs, and applied arts and sciences. The university is actively involved with its surrounding communities through its legal clinics and its centers, including the Schaefer Center for Public Policy; the Sayra and Neil Meyerhoff Center for Families, Children, and the Courts; the Center for Entrepreneurship and Innovation; the Bob Parsons Veterans Center; and the Jacob France Institute and its Baltimore Neighborhood Indicators Alliance.

With a commitment to both its urban environment and real-world education, the University of Baltimore is known for its community involvement and its career-focused academic programs.

Each of UB's four schools—the School of Law, the College of Public Affairs, the Yale Gordon College of Arts and Sciences, and the Merrick School of Business—plays a vital role in the progress of the city and of the state. The university's enrollment growth has been matched by its physical enhancements, including its award-winning, sustainably designed law center and a revitalized home for its arts and sciences and public affairs departments.



LOCATION: Baltimore
PRESIDENT: Kurt L. Schmoke
FOUNDED: 1925
UNDERGRADUATE STUDENTS: 3,222
GRADUATE STUDENTS: 2,761
OPERATING BUDGET: \$139.1 million
FOR MORE INFORMATION: 410.837.4200
 or www.ubalt.edu



UNIVERSITY OF MARYLAND, BALTIMORE

The **UNIVERSITY OF MARYLAND, BALTIMORE (UMB)**, the state's only public health, law, and human services university, enrolls nearly 6,500 students in six nationally ranked professional schools—medicine, law, dentistry, pharmacy, nursing, and social work—and an interdisciplinary graduate school. UMB confers the majority of professional practice doctoral degrees awarded in Maryland.

UMB is a leading academic health center, combining cutting-edge biomedical research and exceptional clinical care. The university attracts \$500 million in grants and contracts each year, and its faculty are among the nation's most productive researchers, with each tenured/tenure-track faculty member annually bringing an average of \$1 million in grant funding into UMB—and into Maryland.

The University of Maryland BioPark, Baltimore's largest biotechnology cluster, fuels the commercialization of new drugs, diagnostics, and devices, giving 900 research scientists and entrepreneurs the space to create and collaborate. With a strong and growing base of industry partners, UMB conducts several hundred clinical and translational research projects every year on behalf of more than 200 corporate sponsors.

UMB delivers \$40 million each year in uncompensated care to the citizens of Maryland. The university's students, faculty, and staff contribute two million hours of service annually, providing programming that improves Marylanders' health and wellness, advances justice, promotes economic development, and strengthens families and communities.

**University of Maryland,
Baltimore students mentor
middle school students as part
of UMB CURE, one of the
university's pipeline programs to
prepare west Baltimore children
for careers in the health sciences.**

LOCATION: Baltimore
PRESIDENT: Jay A. Perman, M.D.
FOUNDED: 1807
UNDERGRADUATE STUDENTS: 905
GRADUATE STUDENTS: 5,577
OPERATING BUDGET: \$1.1 billion
FOR MORE INFORMATION: 410.706.3100
or www.umaryland.edu

UNIVERSITY OF MARYLAND, BALTIMORE COUNTY

The **UNIVERSITY OF MARYLAND, BALTIMORE COUNTY (UMBC)** is committed to innovative teaching, relevant research across disciplines, and supportive community, while empowering and inspiring inquisitive minds. UMBC offers an honors university experience that combines the learning opportunities of a liberal arts college with the creative intensity of a leading research university. At the same time, UMBC is one of the country's most inclusive communities for undergraduate and graduate education.

U.S. News & World Report has named UMBC a national leader in both innovation and undergraduate teaching. *Times Higher Education* recognizes UMBC as one of the

U.S. News & World Report has named UMBC a national leader in both innovation and undergraduate teaching.

world's top young universities for strong research, innovation, and an international outlook. *The Princeton Review*, *Kiplinger's Personal Finance*, and *Fiske Guide to Colleges* have named UMBC a "best value" university.

UMBC's government and industry partnerships, by advancing entrepreneurship, workforce training, K-16 education, and technology commercialization, contribute to the state's economic development. More than 120 technology, bioscience, and research companies and organizations are located at the bwtech@UMBC Research and Technology Park, which is also home to Maryland's first cyber incubator.



LOCATION: Baltimore
PRESIDENT: Freeman A. Hrabowski III
FOUNDED: 1966
UNDERGRADUATE STUDENTS: 11,142
GRADUATE STUDENTS: 2,498
OPERATING BUDGET: \$448.6 million
FOR MORE INFORMATION: 410.455.1000
or www.umbc.edu



UNIVERSITY OF MARYLAND, COLLEGE PARK

The **UNIVERSITY OF MARYLAND, COLLEGE PARK (UMCP)** is USM's flagship institution and a top-tier public research university, fueled by more than a half-billion-dollar research enterprise. The only public research university inside the Washington, D.C., Beltway, UMCP's strategic partnerships with national institutions uniquely position the university to provide unparalleled opportunities for faculty and students.

As a worldwide leader in fearless research, UMCP works to discover new knowledge, improve the human condition, and educate the next generation of global citizens.

LOCATION: College Park
PRESIDENT: Wallace D. Loh
FOUNDED: 1856
UNDERGRADUATE STUDENTS: 28,472
GRADUATE STUDENTS: 10,611
OPERATING BUDGET: \$2.1 billion
FOR MORE INFORMATION: 310.405.1000
or www.umd.edu

Committed to sparking fearless ideas, UMCP offers more than 100 courses designed to foster innovation and entrepreneurship. The university's Do Good Institute, a campus-wide hub of social innovation, establishes UMCP as a global leader in advancing social change, philanthropy, and nonprofit leadership. UMCP provides countless out-of-classroom opportunities, more than 25 living-learning environments, and more than 400 study abroad programs to empower students to make a global impact. The faculty includes three Nobel laureates, two Pulitzer Prize winners, 56 members of the national academies, and scores of Fulbright scholars.

UMCP is ranked No. 20 among public universities and No. 25 for most innovative schools by *U.S. News & World Report*, as well as No. 14 among public universities by *Forbes*. *The Princeton Review* and *Entrepreneur* magazine ranked UMCP No. 9 overall for undergraduate entrepreneurship programs. And *Kiplinger's Personal Finance* named UMCP among the top best values in public colleges, ranking it No. 8 nationally for in-state students.

UMCP is committed to its core values of equity, diversity, and inclusion, recognizing that a diverse educational community is one of its greatest strengths.



UNIVERSITY OF MARYLAND EASTERN SHORE

The **UNIVERSITY OF MARYLAND EASTERN SHORE's (UMES')** impressive array of peer-accredited degree programs blends a time-honored curriculum with instruction in such contemporary professions as aviation science, aerospace engineering, biochemistry, construction management, criminal justice, hospitality management, and allied health.

A doctoral research university nestled between the Chesapeake Bay and Atlantic Ocean, UMES draws a multicultural student body from diverse backgrounds and perspectives. Its focus as a historically black land-grant institution, founded in 1886, is on teaching, research, and outreach emphasizing stewardship of the land, sea, and environment.

UMES offers bachelor's degrees in 37 areas, spanning physical and biological sciences, social and behavioral sciences, engineering, education, mathematics, information technology, humanities, visual and performing arts, and golf management. Twenty-seven academic units boast peer-review accreditation.

Cybersecurity and pharmaceutical sciences are among the 15 master's degree programs in UMES' graduate school, along with eight doctoral degrees in educational leadership, food science and technology, marine-estuarine environmental sciences, organizational leadership, pharmacy practice, pharmaceutical science, physical therapy, and toxicology.

UMES routinely ranks among the nation's top 10 historically black public institutions, according to the annual "best colleges" survey conducted by *U.S. News & World Report*.

LOCATION: Princess Anne
PRESIDENT: Juliette B. Bell
FOUNDED: 1886
UNDERGRADUATE STUDENTS: 3,277
GRADUATE STUDENTS: 627
OPERATING BUDGET: \$139.4 million
FOR MORE INFORMATION: 410.651.2200
or www.umes.edu

UNIVERSITY OF MARYLAND UNIVERSITY COLLEGE



UNIVERSITY OF MARYLAND UNIVERSITY COLLEGE (UMUC) is a world leader in innovative educational models, with award-winning online programs in disciplines that are in high demand in today's increasingly technical, global workplace. They include biotechnology, cybersecurity, data analytics, business, and information technology. UMUC offers open access with a global footprint and a specific mission: to meet the higher education needs of adult learners whose responsibilities may include jobs, family, and military service.

UMUC offers bachelor's and master's degrees, a doctoral program, and certificate programs online and at more than 20 locations in the

Maryland-Washington, D.C., metropolitan area. The university is renowned for its distinguished faculty of scholar-practitioners, online student support services, and flexible course schedules. Through its acclaimed Maryland Completion Scholarship, the university offers graduates of Maryland community colleges a pathway to a four-year degree for a total cost of \$20,000—including community college tuition. UMUC also serves the educational needs of the U.S. military in more than 20 countries around the world. A pioneer in distance learning, UMUC is harnessing the power of learning science and technology to deliver a valued education that is affordable and accessible.

In 2016, UMUC's Master of Science in Data Analytics program received the University Professional and Continuing Education Association (UPCEA) Mid-Atlantic Region Outstanding Program Award.

LOCATION: Adelphi

PRESIDENT: Javier Miyares

FOUNDED: 1947

UNDERGRADUATE STUDENTS: 44,219

GRADUATE STUDENTS: 13,310

OPERATING BUDGET: \$411 million

FOR MORE INFORMATION: 800.888.8682

or www.umuc.edu



UNIVERSITY OF MARYLAND CENTER FOR ENVIRONMENTAL SCIENCE

UMCES trains the next generation of environmental stewards to meet the global challenges of the 21st century.

The **UNIVERSITY OF MARYLAND CENTER FOR ENVIRONMENTAL SCIENCE (UMCES)** is USM's research and educational institute working to understand and manage our world's natural resources. Its network of four regional laboratories—the Chesapeake Biological Laboratory in Solomons, Appalachian Laboratory in Frostburg, Horn Point Laboratory in Cambridge, and Institute of Marine and Environmental Technology in Baltimore (in collaboration with UMBC and UMB)—uses cutting-edge science to find solutions to environmental challenges in the Chesapeake Bay and around the world.

A trusted scientific advisor to state and national leaders, UMCES provides unbiased research to inform public policy that impacts the lives of Marylanders. A world-renowned faculty educates the next generation of science leaders, working side-by-side to connect their passion for the environment to a greater good. Educational programs include graduate studies, undergraduate research internships, and K-12 environmental education activities for students and teachers.



LOCATION: Headquarters in Cambridge

PRESIDENT: Peter Goodwin (effective 9/18/17)

FOUNDED: 1925

OPERATING BUDGET: \$48.2 million

FOR MORE INFORMATION: 410.228.9250

or www.umces.edu

REGIONAL HIGHER EDUCATION CENTERS

UNIVERSITIES AT SHADY GROVE

The **UNIVERSITIES AT SHADY GROVE (USG)** is an innovative partnership of nine University System of Maryland universities on one campus. Each university offers a selection of their most highly sought academic programs and awards its own degrees. USG, in turn, provides centralized onsite student, academic, and administrative services. This integrated approach allows USG to offer easily accessible pathways to 80 upper-level undergraduate, graduate, professional degree, and certificate programs. USG offers flexible options to attend school full-time or part-time, with evening and weekend classes. Students can complete their education in an affordable and timely manner close to home. USG provides outstanding career opportunities for students while supplying regional employers with a highly educated, skilled workforce.



LOCATION: Rockville
EXECUTIVE DIRECTOR: Stewart Edelstein
FOUNDED: 2000
UNDERGRADUATE STUDENTS: 2,437
GRADUATE STUDENTS: 1,347
FOR MORE INFORMATION: 301.738.6000
 or www.shadygrove.umd.edu

To increase access to its academic programs, USM operates two regional higher education centers: the Universities at Shady Grove (USG) in Montgomery County and the University System of Maryland at Hagerstown (USMH). The centers serve upper-level undergraduate (juniors and seniors) and graduate students in convenient and accessible locations, enabling them to complete their degrees in a timely and cost-effective manner.

UNIVERSITY SYSTEM OF MARYLAND AT HAGERSTOWN

The **UNIVERSITY SYSTEM OF MARYLAND AT HAGERSTOWN (USMH)** is a regional center that offers more than 20 programs of study from six University System of Maryland institutions. USMH has grown steadily since opening in 2005 and continues to initiate new undergraduate and graduate programs in response to area workforce demand and student interest.

USMH is partnering with local developers to create space for a Hospitality and Tourism Management program offered by the University of Maryland Eastern Shore. A nearby vacant building will be renovated to house a state-of-the-art teaching kitchen and dining and classroom space to support the program. The second floor of this new facility will be designed to accommodate STEM labs and classrooms.

Responding to the exceptional need for healthcare professionals in the region, USMH is working with Frostburg State University and the University of Maryland, Baltimore



to develop programs for advanced practice professionals that would be offered at USMH. A hybrid nurse practitioner program is planned to launch in fall 2018, with a physician assistant program to follow in fall 2019. Another underused building will be renovated to accommodate these academic offerings in the downtown core.

With more than 1,900 graduates to date, USMH is helping to raise the college degree attainment rate in western Maryland and supply a skilled workforce for employers in the region.

LOCATION: Hagerstown
EXECUTIVE DIRECTOR: Mark Halsey
FOUNDED: 2005
UNDERGRADUATE STUDENTS: 319
GRADUATE STUDENTS: 162
FOR MORE INFORMATION: 240.527.2060
 or www.hagerstown.usmd.edu

USM LEADERSHIP

BOARD OF REGENTS

A 17-member Board of Regents governs the University System of Maryland. Appointed by the governor, the regents oversee the system's academic, administrative, and financial operations; formulate policy; and appoint the USM chancellor and the presidents of the system's 12 institutions. With their experience in many fields—including education, business, service, and law—regents volunteer their expertise and time to help the university system meet the diverse needs of its students and the state.

James T. Brady, **CHAIR**
 Barry P. Gossett, **VICE CHAIR**
 Gary L. Attman, **TREASURER**
 Linda R. Gooden, **ASSISTANT TREASURER**
 Michelle A. Gourdine M.D., **SECRETARY**
 Robert D. Rauch, **ASSISTANT SECRETARY**
 Norman R. Augustine
 Joseph Bartenfelder, **EX OFFICIO**
 Ellen Fish
 James Holzapfel
 D'Ana E. Johnson
 Robert Neall
 Louis Pope
 Robert L. Pevenstein
 Katrina J. Dennis
 Dr. Frank M. Reid III
 William A. Shorter Jr., **STUDENT REGENT**

WWW.USMD.EDU/REGENTS

OFFICERS

Robert L. Caret, **CHANCELLOR**
 Joseph F. Vivona, **CHIEF OPERATING OFFICER
AND VICE CHANCELLOR FOR
ADMINISTRATION AND FINANCE**
 Joann A. Boughman, **SENIOR VICE CHANCELLOR
FOR ACADEMIC AFFAIRS**
 Janice B. Doyle, **CHIEF OF STAFF TO THE
CHANCELLOR AND SECRETARY
TO THE BOARD OF REGENTS**
 Patrick N. Hogan, **VICE CHANCELLOR
FOR GOVERNMENT RELATIONS**
 Jeff Neal, **VICE CHANCELLOR FOR
COMMUNICATIONS AND MARKETING**
 Leonard R. Raley, **VICE CHANCELLOR
FOR ADVANCEMENT**
 J. Thomas Sadowski, **VICE CHANCELLOR
FOR ECONOMIC DEVELOPMENT**

WWW.USMD.EDU/USM/CHANCELLOR

UNIVERSITY SYSTEM OF MARYLAND OFFICE

The USM Office, headquartered in Baltimore and with locations in Adelphi, Annapolis, and Columbia, serves as staff to the Board of Regents. Under the leadership of the chancellor, system office staff members advocate on behalf of the 12 USM institutions and two regional centers and facilitate collaboration and efficiencies among institutions.

The University System of Maryland Foundation offices are housed at the system's Adelphi location. A not-for-profit corporation separate from USM, the foundation oversees investments of an endowment and other assets totaling \$1.29 billion as of June 30, 2017.



APPLY / TRANSFER TO A UNIVERSITY SYSTEM OF MARYLAND UNIVERSITY

For information on applying and/or transferring to a USM university, visit WWW.USMD.EDU/USM/ADMISSIONS.

USM maintains a portal to make it even easier to transfer from a Maryland community college to one of the system's 11 degree-granting institutions. See the transfer coordinator at your college or contact the admissions office at the USM university of your choice. Access the transfer portal at ARTSYS.USMD.EDU/TRANSFERINFO.HTML.

UNIVERSITY SYSTEM OF MARYLAND /
AN EQUAL OPPORTUNITY ORGANIZATION

USM HEADQUARTERS

701 E. Pratt St.
Baltimore, MD 21202

CURRENT MAILING ADDRESS FOR ALL SYSTEM OFFICES:

University System of Maryland
3300 Metzerott Road
Adelphi, MD 20783 / 301.445.2740

WEBNOTES@USMD.EDU / WWW.USMD.EDU



9.17 / 1M

