



**TRANSFER STUDENTS TO THE  
UNIVERSITY SYSTEM OF  
MARYLAND:**

*Patterns of Enrollment and Success*

*Updated through FY 2008*

*Bowie State University (BSU)*  
*Coppin State University (CSU)*  
*Frostburg State University (FSU)*  
*Salisbury University (SU)*  
*Towson University (TU)*  
*University of Baltimore (UB)*  
*University of Maryland, Baltimore (UMB)*  
*University of Maryland, Baltimore County (UMBC)*  
*University of Maryland, College Park (UMCP)*  
*University of Maryland Eastern Shore (UMES)*  
*University of Maryland University College (UMUC)*

**Office of the Chief Operating Officer and  
Vice Chancellor for Administration and Finance  
University System of Maryland  
January 2009**

Transfer Students to the University System of Maryland  
Patterns of Enrollment and Success Through FY 2008

**Highlights:**

- In FY 2008, 17,988 students transferred to a USM institution.
- Of those who transferred in FY 2008, approximately 50 percent (8,993) came from a Maryland community college.
- The number of Maryland community college students who transferred in FY 2008 was basically the same as in FY 2007; however, over the past five years (FY 2004 - FY 2008) that number has increased approximately 16 percent.
- Among Maryland community college students who transferred to a USM institution in FY 2008, twenty-four (24%) percent were African-American; four percent (4%) were Hispanic.
- Over the past five years (FY 2004 – FY 2008), the number of African-American community college students transferring to a USM institution has increased 31 percent, while the number of Hispanic community college transfer students has grown by 19 percent.
- In FY 2008, four of the 16 Maryland public two-year institutions – Montgomery College, Baltimore County Community College, Anne Arundel Community College, and Prince George’s Community College - supplied approximately two-thirds of all Maryland community college transfers to USM institutions.
- The largest proportion of Maryland community college transfers to USM institutions enrolled in the following program areas in FY 2008: business and management (24%), social sciences (12%), computer and information science (8%), education (7%), and the health professions (7%).
- Sixty-six percent (66%) of Maryland community college transfers to USM institutions enrolled as full-time students in FY 2008 (based on fall 2007 enrollments). However, fifty-three percent (53%) of African-American transfer students were enrolled full time.
- Three quarters of Maryland community college students who transferred to USM institutions in FY 2008 (based on fall 2007 enrollment) entered with either sophomore or junior status.
- Forty-eight percent (48%) of the FY 2005 cohort of Maryland community college transfers to USM institutions graduated within four years of transferring.

Transfer Students to the University System of Maryland  
Patterns of Enrollment and Success Through FY 2008

**Background**

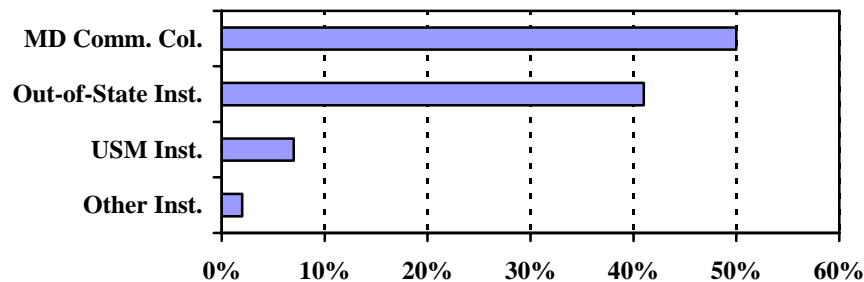
The following report provides data on demographic characteristics, enrollment status, enrollment trends, and graduation rates for transfer students to institutions in the University System of Maryland. Most of the data supplied in this report were extracted from the 2008 Transfer Student System (TSS) data file.<sup>1</sup> The TSS was originally designed by the Maryland Higher Education Commission (MHEC), the University System of Maryland (USM), and the Maryland community colleges to provide feedback to the community colleges about the success of their students. The TSS also collects data on students who transferred across USM institutions, from other Maryland institutions, and from out-of-state institutions. Those data are presented in tables that appear in the appendix of this report. In addition, the USM and the Maryland Association of Community Colleges' Joint Leadership Council, Committee on Access and Transfer, examine specific transfer issues to facilitate the relative ease of transfer between the segments of higher education. The data affirm that transfer students are a vital segment of our undergraduate population. Because all TSS data are continuously updated by the institutions, the information contained in this report is not comparable to information found in reports from prior years. The information in this report reflects the most recent updates to data from FY 2004 through FY 2008. For further information, please contact Gayle Fink, [gfink@usmd.edu](mailto:gfink@usmd.edu), 301-445-2737.

**First-time Transfers to USM<sup>2</sup>**

First-time transfers make up a substantial part of newly enrolled undergraduate students at USM institutions. Approximately 18,000 students transferred into USM institutions in FY 2008 (including summer 2007, fall 2007, and spring 2008 semesters). This represents 15% of all undergraduate students attending a USM institution last fiscal year. Half of the students who transferred to a USM institution came from a Maryland community college.

**Figure 1**

**Transfers to USM Institutions By Source of Transfer FY 2008**



<sup>1</sup> The TSS data files were matched with the Enrollment Information System (EIS) data files to provide additional information on enrollment status and student level upon entry.

<sup>2</sup> First-time transfers are defined as students transferring for the first time from a higher education institution with 12 or more credits.

## Transfer Students to the University System of Maryland Patterns of Enrollment and Success Through FY 2008

### **First-Time Community College Transfers to the USM**

#### ***Enrollment Growth***

In both FY 2007 and FY 2008, over 8,900 new students transferred from a Maryland community college to a USM institution. Over the past 5 years (FY 2004 – FY 2008), the number of new Maryland community college transfer students has grown 17 percent from 7,706 to 8,933.

Since FY 2004, the number of Maryland community college transfers has grown an average of 3 percent annually. Between FY 2007 and FY 2008 the number of community college transfer students System-wide was essentially flat. However, there was growth at some institutions. Those experiencing growth were Towson (+99), UMCP (+95), UMBC (+91), UMES (+49), Frostburg (+30), Bowie (+21) and UMB (+8). UMUC, Salisbury, UB and Coppin combined enrolled 374 fewer community college transfer students.

#### ***Selected Demographics – FY 2008***

African-American students make up a quarter of the transfer students from Maryland community colleges entering USM institutions. Hispanic students comprise 4 percent and white students 51 percent. The number of African-Americans had grown 30 percent since FY 2004, while the number of Hispanics and whites increased 19 percent and 10 percent, respectively. Fifty-seven percent of all Maryland community college transfers to USM institutions were female.

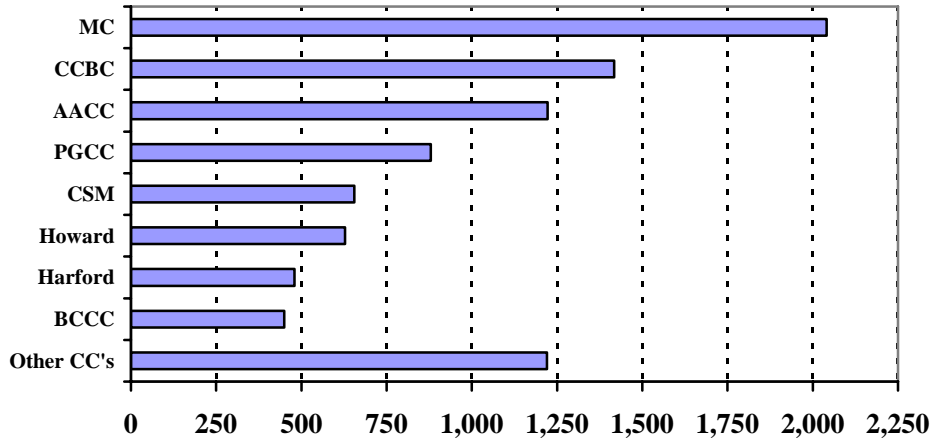
The average age of first-time community college transfer students to USM institutions was significantly above that of new freshmen. The average age among Maryland community college transfers was 26 compared to an average age of 19 among new freshmen. Almost 60 percent of these transfer students were between 20-24 years of age.

#### ***Transfer and Enrollment Patterns***

In FY 2008, three out of five Maryland community college transfers to the USM came from four of the state's 16 public two-year institutions (Montgomery – 2,041, Baltimore County – 1,417, Anne Arundel - 1,222, and Prince George's – 880 - See Figure 2). Eight community colleges saw five-year highs in the number of new transfer students – CCBC, Cecil, Frederick, Garrett, Hagerstown, Harford, Howard and Montgomery.

Transfer Students to the University System of Maryland  
Patterns of Enrollment and Success Through FY 2008

**Figure 2**  
**Maryland Community College Transfers to USM Institutions**  
**FY 2008**

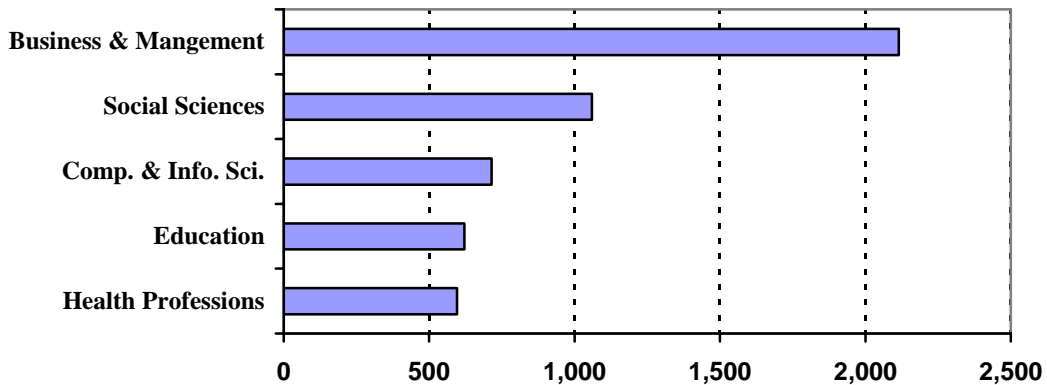


In FY 2008, three USM institutions - Towson, UB, and UMUC had at least one new community college transfer student from each of the 16 Maryland community colleges. The five USM institutions enrolling the largest share of Maryland community college transfers were: UMUC (2,118), Towson (1,729), UMCP (1,652), UMBC (1,052), and UB (843). Together, these five institutions enrolled 82 percent of all Maryland community college transfers to the USM.

***Programs of Study***

The largest proportion of Maryland community college transfer students to USM institutions entered programs in business and management (24%), the social sciences (12%), computer and information science (8%), education (7%), and the health professions (7%). Eight percent of these students had an undeclared major. The number of undeclared majors declined 21 percent between FY 2004 and FY 2008.

**Figure 3**  
**Maryland Community College Transfers to USM Institutions**  
**By Program Area at Time of Transfer**  
**FY 2008**



## Transfer Students to the University System of Maryland Patterns of Enrollment and Success Through FY 2008

### ***Fall Attendance Patterns and Student Level***

Sixty-six percent of all Maryland community college students who transferred to USM institutions in FY 2008 did so in the fall semester. Of those community college transfer students who entered in fall 2007, 66 percent attended on a full-time basis. The percentage of African-American transfer students attending full-time was 53 percent compared to 73 percent of white transfer students. One quarter of African-American transfer students attended UMUC part-time compared to 14 percent of white transfer students.

The largest proportion of Maryland community college students who transferred to USM institutions entered as either sophomores or juniors (74%) in fall 2007. Sixty-eight percent of African-American community college transfer students entered as sophomores or juniors compared to 78 percent of white students. The upward trend in the percentage of students entering as juniors is positive and may be linked to renewed articulation agreements and the Associate of Arts in Teaching program.

### ***Graduation Rates***

Of those Maryland community college transfers who enrolled in FY 2005, 48 percent graduated within four years. The graduation rate of Maryland community college transfers to the USM was 16 percentage points below that of new freshmen after six years (fall 2002 new freshmen cohort 64%). Given the differing entering student levels, this lower graduation rate is to be expected. However, the four-year graduation rates are trending downward at a time of increased number of students entering USM institutions. The FY 2000 community college transfer student four-year graduation rate was 55 percent and the FY 2005 cohort was 48 percent. Of those African-American community college transfers who enrolled at a USM institution in FY 2005, 36 percent graduated within four years, down from 40 percent for the FY 2003 cohort. The graduation rate of white students dropped slightly to 53 percent from 54 percent.

Within the USM, the four-year graduation rate for Maryland community college transfers was highest at UMB (89%), UMCP (62%), Salisbury (61%), Towson (60%), and Frostburg (54%). Among African-American community college transfers to the USM, graduation rates were highest at UMB (89%), Salisbury (59%), Frostburg (56%) and Towson (50%).

### **Next Steps**

The USM System Office will be sharing this information with campuses and with the University System of Maryland/Maryland Association of Community Colleges Joint Leadership Council, Committee on Transfer and Articulation, to further inform discussions and *Closing the Gap* action plans.

# **APPENDIX**

Table 1  
 University System of Maryland Transfer Students  
 By Type of Institution Transferred From  
 By Receiving Institution  
 FY 2008

**Number of Transfers**

|           | MD Comm Coll. | USM Inst. | MSU or SMCM | MD Private | Out-of-State | Total Transfers |
|-----------|---------------|-----------|-------------|------------|--------------|-----------------|
| Bowie     | 302           | 58        | 23          | 5          | 184          | 572             |
| Coppin    | 199           | 0         | 0           | 0          | 0            | 199             |
| Frostburg | 313           | 25        | 1           | 6          | 200          | 545             |
| Salisbury | 524           | 58        | 0           | 9          | 385          | 976             |
| Towson    | 1,729         | 2         | 0           | 1          | 928          | 2,660           |
| UB        | 843           | 2         | 0           | 0          | 7            | 852             |
| UMB       | 164           | 52        | 1           | 2          | 85           | 304             |
| UMBC      | 1,052         | 144       | 25          | 45         | 347          | 1,613           |
| UMCP      | 1,652         | 317       | 25          | 47         | 996          | 3,037           |
| UMES      | 97            | 4         | 0           | 5          | 17           | 123             |
| UMUC      | 2,118         | 555       | 68          | 65         | 4,311        | 7,117           |
| USM       | 8,993         | 1,217     | 143         | 185        | 7,460        | 17,998          |

**Percent of Transfers**

|           | MD Comm Coll. | USM Inst. | MSU or SMCM | MD Private | Out-of-State | Total Transfers |
|-----------|---------------|-----------|-------------|------------|--------------|-----------------|
| Bowie     | 53%           | 10%       | 4%          | 1%         | 32%          | 100%            |
| Coppin    | 100%          | 0%        | 0%          | 0%         | 0%           | 100%            |
| Frostburg | 57%           | 5%        | 0%          | 1%         | 37%          | 100%            |
| Salisbury | 54%           | 6%        | 0%          | 1%         | 39%          | 100%            |
| Towson    | 65%           | 0%        | 0%          | 0%         | 35%          | 100%            |
| UB        | 99%           | 0%        | 0%          | 0%         | 1%           | 100%            |
| UMB       | 54%           | 17%       | 0%          | 1%         | 28%          | 100%            |
| UMBC      | 65%           | 9%        | 2%          | 3%         | 22%          | 100%            |
| UMCP      | 54%           | 10%       | 1%          | 2%         | 33%          | 100%            |
| UMES      | 79%           | 3%        | 0%          | 4%         | 14%          | 100%            |
| UMUC      | 30%           | 8%        | 1%          | 1%         | 61%          | 100%            |
| USM       | 50%           | 7%        | 1%          | 1%         | 41%          | 100%            |

Note: Transfers are the number of undergraduates enrolled for the first time with 12 or more credits.

MSU=Morgan State University; SMCM=St. Mary's College of Maryland

Source: TSS

Table 2  
 University System of Maryland  
 First-time Transfers to USM Institutions  
 FY 2004 - FY 2008

|  | FY 2004        | FY 2005        | FY 2006        | FY 2007        | FY 2008        | FY 04-08<br>Δ Chg. |
|--|----------------|----------------|----------------|----------------|----------------|--------------------|
| MD Comm College<br>% of Total          | 7,706<br>49%   | 8,048<br>49%   | 8,526<br>44%   | 8,974<br>48%   | 8,933<br>50%   | 16%                |
| USM Institutions<br>% of Total         | 1,137<br>7%    | 1,181<br>7%    | 1,268<br>7%    | 1,218<br>7%    | 1,217<br>7%    | 7%                 |
| MSU & SMCM<br>% of Total               | 99<br>1%       | 106<br>1%      | 127<br>1%      | 131<br>1%      | 143<br>1%      | 44%                |
| Md Private Inst.<br>% of Total         | 184<br>1%      | 203<br>1%      | 227<br>1%      | 201<br>1%      | 185<br>1%      | 1%                 |
| Out-of-State Inst. & Unk<br>% of Total | 6,482<br>42%   | 6,979<br>42%   | 9,348<br>48%   | 8,129<br>44%   | 7,460<br>42%   | 15%                |
| Total<br>% of Total                    | 15,608<br>100% | 16,517<br>100% | 19,496<br>100% | 18,653<br>100% | 17,938<br>100% | 15%                |

MSU=Morgan State University; SMCM=St. Mary's College of Maryland

Source: TSS

Table 3  
 University System of Maryland  
 Maryland Community College Transfers by Ethnicity  
 FY 2004 - FY 2008

|                                | FY 2004       | FY 2005       | FY 2006       | FY 2007       | FY 2008       | FY 04-08<br>Δ Chg. |
|--------------------------------|---------------|---------------|---------------|---------------|---------------|--------------------|
| African-American<br>% of Total | 1,628<br>21%  | 1,910<br>24%  | 2,010<br>24%  | 2,165<br>24%  | 2,130<br>24%  | 31%                |
| Hispanic<br>% of Total         | 319<br>4%     | 372<br>5%     | 379<br>4%     | 382<br>4%     | 379<br>4%     | 19%                |
| Other Minority<br>% of Total   | 636<br>8%     | 629<br>8%     | 714<br>8%     | 731<br>8%     | 731<br>8%     | 15%                |
| White<br>% of Total            | 4,210<br>55%  | 4,166<br>52%  | 4,374<br>51%  | 4,599<br>51%  | 4,611<br>51%  | 10%                |
| Other/Unknown<br>% of Total    | 913<br>12%    | 971<br>12%    | 1,049<br>12%  | 1,097<br>12%  | 1,142<br>13%  | 25%                |
| Total<br>% of Total            | 7,706<br>100% | 8,048<br>100% | 8,526<br>100% | 8,974<br>100% | 8,993<br>100% | 17%                |

Note: Other includes foreign students

Source: TSS

Table 4  
University System of Maryland  
Maryland Community College Transfers By Institution  
FY 2004 - FY 2008

|           | FY 2004 | FY 2005 | FY 2006 | FY 2007 | FY 2008 | Avg.<br>Annual<br>Change | FY 07-08<br>Δ Chg. |
|-----------|---------|---------|---------|---------|---------|--------------------------|--------------------|
| Bowie     | 264     | 453     | 290     | 281     | 302     | 2.7%                     | 5%                 |
| Coppin    | 132     | 197     | 219     | 214     | 199     | 8.6%                     | -8%                |
| Frostburg | 285     | 268     | 277     | 283     | 313     | 1.9%                     | 11%                |
| Salisbury | 519     | 513     | 569     | 601     | 524     | 0.2%                     | -15%               |
| Towson    | 1,335   | 1,429   | 1,483   | 1,630   | 1,729   | 5.3%                     | 7%                 |
| UB        | 616     | 677     | 902     | 872     | 843     | 6.5%                     | -4%                |
| UMB       | 149     | 146     | 136     | 156     | 164     | 1.9%                     | 5%                 |
| UMBC      | 1,486   | 1,030   | 947     | 961     | 1,052   | -6.7%                    | 9%                 |
| UMCP      | 1,040   | 1,341   | 1,571   | 1,557   | 1,652   | 9.7%                     | 7%                 |
| UMES      | 124     | 136     | 77      | 48      | 97      | -4.8%                    | 36%                |
| UMUC      | 1,756   | 1,858   | 2,055   | 2,371   | 2,118   | 3.8%                     | -14%               |
| USM       | 7,706   | 8,048   | 8,526   | 8,974   | 8,993   | 3.1%                     | 0%                 |

Source: TSS

Table 5  
University System of Maryland  
Maryland Community College Transfers By Sending Institution  
FY 2004 - FY 2008

|                 | FY 2004 | FY 2005 | FY 2006 | FY 2007 | FY 2008 | Avg.<br>Annual<br>Change | FY 07-08<br>Δ Chg. |
|-----------------|---------|---------|---------|---------|---------|--------------------------|--------------------|
| Allegany        | 138     | 134     | 119     | 132     | 126     | -1.8%                    | -4%                |
| Anne Arundel    | 1,110   | 1,176   | 1,213   | 1,261   | 1,222   | 1.9%                     | -3%                |
| Baltimore City  | 386     | 373     | 716     | 437     | 450     | 3.1%                     | 3%                 |
| Carroll         | 133     | 214     | 190     | 220     | 219     | 10.5%                    | 0%                 |
| CCBC            | 1,030   | 1,044   | 997     | 1,386   | 1,417   | 6.6%                     | 3%                 |
| Cecil           | 43      | 47      | 49      | 49      | 56      | 5.4%                     | 15%                |
| CSM             | 614     | 643     | 688     | 729     | 655     | 1.3%                     | -12%               |
| Chesapeake      | 100     | 121     | 108     | 115     | 119     | 3.5%                     | 3%                 |
| Frederick       | 229     | 239     | 269     | 261     | 342     | 8.4%                     | 34%                |
| Garrett         | 27      | 38      | 36      | 38      | 40      | 8.2%                     | 5%                 |
| Hagerstown      | 107     | 127     | 147     | 136     | 153     | 7.4%                     | 13%                |
| Harford         | 414     | 437     | 381     | 422     | 480     | 3.0%                     | 13%                |
| Howard          | 555     | 578     | 575     | 606     | 628     | 2.5%                     | 4%                 |
| Montgomery      | 1,757   | 1,776   | 1,911   | 1,996   | 2,041   | 3.0%                     | 3%                 |
| Prince George's | 835     | 928     | 914     | 940     | 880     | 1.1%                     | -6%                |
| Wor-Wic         | 228     | 173     | 213     | 246     | 165     | -6.3%                    | -47%               |
| Total           | 7,706   | 8,048   | 8,526   | 8,974   | 8,993   | 3.1%                     | 0%                 |

Source: TSS

Table 6  
 University System of Maryland  
 Maryland Community College Transfers By Institution  
 FY 2008

| Sending Inst    | Receiving Institution |            |            |            |              |            |            |              |              |           |              |              |
|-----------------|-----------------------|------------|------------|------------|--------------|------------|------------|--------------|--------------|-----------|--------------|--------------|
|                 | Bowie                 | Coppin     | Frostburg  | Salisbury  | Towson       | UB         | UMB        | UMBC         | UMCP         | UMES      | UMUC         | USM          |
| Allegany        | 0                     | 0          | 98         | 3          | 5            | 3          | 1          | 2            | 3            | 1         | 10           | 126          |
| Anne Arundel    | 28                    | 7          | 11         | 86         | 228          | 119        | 15         | 205          | 242          | 7         | 274          | 1,222        |
| Baltimore City  | 5                     | 119        | 1          | 1          | 41           | 184        | 20         | 18           | 5            | 2         | 54           | 450          |
| Carroll         | 0                     | 0          | 0          | 25         | 109          | 26         | 1          | 27           | 20           | 0         | 11           | 219          |
| CCBC            | 4                     | 49         | 3          | 42         | 492          | 345        | 34         | 234          | 61           | 4         | 149          | 1,417        |
| Cecil           | 0                     | 0          | 2          | 11         | 18           | 4          | 0          | 9            | 5            | 0         | 7            | 56           |
| CSM             | 29                    | 1          | 23         | 48         | 104          | 7          | 6          | 27           | 96           | 1         | 313          | 655          |
| Chesapeake      | 1                     | 2          | 4          | 54         | 16           | 1          | 3          | 9            | 6            | 9         | 14           | 119          |
| Frederick       | 2                     | 1          | 36         | 17         | 102          | 7          | 7          | 24           | 63           | 3         | 80           | 342          |
| Garrett         | 0                     | 0          | 32         | 0          | 1            | 1          | 1          | 0            | 0            | 0         | 5            | 40           |
| Hagerstown      | 0                     | 0          | 57         | 8          | 22           | 4          | 1          | 14           | 10           | 0         | 37           | 153          |
| Harford         | 3                     | 0          | 7          | 30         | 248          | 49         | 9          | 43           | 47           | 0         | 44           | 480          |
| Howard          | 13                    | 7          | 10         | 21         | 131          | 49         | 23         | 143          | 143          | 3         | 85           | 628          |
| Montgomery      | 47                    | 5          | 21         | 51         | 180          | 34         | 23         | 246          | 799          | 33        | 602          | 2,041        |
| Prince George's | 169                   | 7          | 8          | 14         | 29           | 9          | 19         | 48           | 145          | 11        | 421          | 880          |
| Wor-Wic         | 1                     | 1          | 0          | 113        | 3            | 1          | 1          | 3            | 7            | 23        | 12           | 165          |
| <b>Total</b>    | <b>302</b>            | <b>199</b> | <b>313</b> | <b>524</b> | <b>1,729</b> | <b>843</b> | <b>164</b> | <b>1,052</b> | <b>1,652</b> | <b>97</b> | <b>2,118</b> | <b>8,993</b> |

Source: TSS

Table 7  
 University System of Maryland  
 Maryland Community College Transfer Student Program Area  
 FY 2004 - 2008

|                            | FY 2004      | FY 2005      | FY 2006      | FY 2007      | FY 2008      | FY 08 %<br>of total | FY 04-08<br>Δ Chg. |
|----------------------------|--------------|--------------|--------------|--------------|--------------|---------------------|--------------------|
| Agric. & Nat. Res.         | 46           | 47           | 59           | 50           | 86           | 1%                  | 87%                |
| Arch. & Env'tl. Des.       | 2            | 0            | 0            | 0            | 3            | 0%                  | 50%                |
| Area Studies               | 20           | 39           | 42           | 30           | 27           | 0%                  | 35%                |
| Biological Sciences        | 337          | 371          | 380          | 374          | 443          | 5%                  | 31%                |
| Business Managmt.          | 1,606        | 1,840        | 1,569        | 2,224        | 2,115        | 24%                 | 32%                |
| Communications             | 286          | 269          | 306          | 347          | 356          | 4%                  | 24%                |
| Comp. & Info. Sci.         | 804          | 708          | 669          | 785          | 715          | 8%                  | -11%               |
| Education                  | 583          | 589          | 639          | 624          | 621          | 7%                  | 7%                 |
| Engineering                | 208          | 192          | 207          | 188          | 198          | 2%                  | -5%                |
| Fine & Applied Arts        | 190          | 198          | 184          | 194          | 222          | 2%                  | 17%                |
| Foreign Languages          | 33           | 44           | 41           | 39           | 62           | 1%                  | 88%                |
| Health Professions         | 450          | 554          | 562          | 565          | 596          | 7%                  | 32%                |
| Home Economics             | 34           | 58           | 44           | 49           | 43           | 0%                  | 26%                |
| Law                        | 117          | 106          | 110          | 122          | 112          | 1%                  | -4%                |
| Letters                    | 202          | 228          | 262          | 246          | 303          | 3%                  | 50%                |
| Mathematics                | 59           | 56           | 71           | 49           | 78           | 1%                  | 32%                |
| Physical Science           | 64           | 63           | 81           | 84           | 95           | 1%                  | 48%                |
| Psychology                 | 372          | 424          | 411          | 491          | 513          | 6%                  | 38%                |
| Public Affairs             | 277          | 306          | 351          | 353          | 350          | 4%                  | 26%                |
| Social Sciences            | 829          | 872          | 944          | 1,030        | 1,060        | 12%                 | 28%                |
| Interdisciplinary Studies* | 241          | 226          | 291          | 276          | 250          | 3%                  | 4%                 |
| Natural Sci. Tech.         | 13           | 6            | 7            | 7            | 8            | 0%                  | -38%               |
| Undeclared                 | 933          | 852          | 1,296        | 847          | 737          | 8%                  | -21%               |
| <b>Total</b>               | <b>7,706</b> | <b>8,048</b> | <b>8,526</b> | <b>8,974</b> | <b>8,993</b> | <b>100%</b>         | <b>17%</b>         |

\* Prior to FY 2002 all bachelor's degree-seeking undergraduates at UMUC are enrolled in its general studies programs and when completed are awarded a degree in Interdisciplinary Studies

Source: TSS

Table 8  
 University System of Maryland  
 Maryland Community College Transfers Attendance Patterns  
 Fall 2003 - Fall 2007

|           |  | All Transfer Students |           |           |           |           |
|-----------|--|-----------------------|-----------|-----------|-----------|-----------|
|           |  | Fall 2003             | Fall 2004 | Fall 2005 | Fall 2006 | Fall 2007 |
| Full-Time |  |                       |           |           |           |           |
| N         |  | 3,538                 | 3,610     | 3,864     | 3,954     | 3,672     |
| %         |  | 68%                   | 68%       | 69%       | 66%       | 66%       |
| Part-Time |  |                       |           |           |           |           |
| N         |  | 1,661                 | 1,684     | 1,707     | 2,051     | 1,872     |
| %         |  | 32%                   | 32%       | 31%       | 34%       | 34%       |
| Total     |  | 5,199                 | 5,294     | 5,571     | 6,005     | 5,544     |

|           |  | African-American Transfer Students |           |           |           |           |
|-----------|--|------------------------------------|-----------|-----------|-----------|-----------|
|           |  | Fall 2003                          | Fall 2004 | Fall 2005 | Fall 2006 | Fall 2007 |
| Full-Time |  |                                    |           |           |           |           |
| N         |  | 602                                | 672       | 713       | 754       | 730       |
| %         |  | 53%                                | 57%       | 56%       | 53%       | 53%       |
| Part-Time |  |                                    |           |           |           |           |
| N         |  | 524                                | 505       | 562       | 667       | 643       |
| %         |  | 47%                                | 43%       | 44%       | 47%       | 47%       |
| Total     |  | 1,126                              | 1,177     | 1,275     | 1,421     | 1,373     |

|           |  | White Transfer Students |           |           |           |           |
|-----------|--|-------------------------|-----------|-----------|-----------|-----------|
|           |  | Fall 2003               | Fall 2004 | Fall 2004 | Fall 2006 | Fall 2007 |
| Full-Time |  |                         |           |           |           |           |
| N         |  | 2,069                   | 2,012     | 2,201     | 2,301     | 2,040     |
| %         |  | 72%                     | 72%       | 75%       | 73%       | 73%       |
| Part-Time |  |                         |           |           |           |           |
| N         |  | 794                     | 793       | 734       | 866       | 750       |
| %         |  | 28%                     | 28%       | 25%       | 27%       | 27%       |
| Total     |  | 2,863                   | 2,805     | 2,935     | 3,167     | 2,790     |

Note: Attendance status is based upon the EIS file and only reflects students who transferred in the Fall term. The totals are less than reported elsewhere in this report.

Source: EIS and TSS

Table 9  
University System of Maryland  
Maryland Community College Transfer Student Level  
Fall 2003 - Fall 2007

**Number of Transfer Students**

|              | All Transfer Students |              |              |              |              |
|--------------|-----------------------|--------------|--------------|--------------|--------------|
|              | Fall 2003             | Fall 2004    | Fall 2005    | Fall 2006    | Fall 2007    |
| Freshmen     | 639                   | 881          | 1,458        | 1,687        | 1,267        |
| Sophomore    | 2,077                 | 2,062        | 1,978        | 2,181        | 1,964        |
| Junior       | 2,147                 | 1,993        | 1,938        | 1,946        | 2,164        |
| Senior       | 235                   | 218          | 82           | 82           | 98           |
| Unclassified | 101                   | 140          | 115          | 111          | 51           |
| <b>Total</b> | <b>5,199</b>          | <b>5,294</b> | <b>5,571</b> | <b>6,007</b> | <b>5,544</b> |

**Percent of Transfer Students**

|              | All Transfer Students |             |             |             |             |
|--------------|-----------------------|-------------|-------------|-------------|-------------|
|              | Fall 2003             | Fall 2004   | Fall 2005   | Fall 2006   | Fall 2007   |
| Freshmen     | 12%                   | 17%         | 26%         | 28%         | 23%         |
| Sophomore    | 40%                   | 39%         | 36%         | 36%         | 35%         |
| Junior       | 41%                   | 38%         | 35%         | 32%         | 39%         |
| Senior       | 5%                    | 4%          | 1%          | 1%          | 2%          |
| Unclassified | 2%                    | 3%          | 2%          | 2%          | 1%          |
| <b>Total</b> | <b>100%</b>           | <b>100%</b> | <b>100%</b> | <b>100%</b> | <b>100%</b> |

|              | African-American Transfer Students |              |              |              |              |
|--------------|------------------------------------|--------------|--------------|--------------|--------------|
|              | Fall 2003                          | Fall 2004    | Fall 2005    | Fall 2006    | Fall 2007    |
| Freshmen     | 149                                | 296          | 440          | 521          | 391          |
| Sophomore    | 398                                | 364          | 395          | 408          | 419          |
| Junior       | 473                                | 429          | 386          | 428          | 510          |
| Senior       | 80                                 | 54           | 22           | 29           | 33           |
| Unclassified | 26                                 | 34           | 32           | 35           | 20           |
| <b>Total</b> | <b>1,126</b>                       | <b>1,177</b> | <b>1,275</b> | <b>1,421</b> | <b>1,373</b> |

|              | African-American Transfer Students |             |             |             |             |
|--------------|------------------------------------|-------------|-------------|-------------|-------------|
|              | Fall 2003                          | Fall 2004   | Fall 2005   | Fall 2006   | Fall 2007   |
| Freshmen     | 13%                                | 25%         | 35%         | 37%         | 28%         |
| Sophomore    | 35%                                | 31%         | 31%         | 29%         | 31%         |
| Junior       | 42%                                | 36%         | 30%         | 30%         | 37%         |
| Senior       | 7%                                 | 5%          | 2%          | 2%          | 2%          |
| Unclassified | 2%                                 | 3%          | 3%          | 2%          | 1%          |
| <b>Total</b> | <b>100%</b>                        | <b>100%</b> | <b>100%</b> | <b>100%</b> | <b>100%</b> |

|              | White Transfer Students |              |              |              |              |
|--------------|-------------------------|--------------|--------------|--------------|--------------|
|              | Fall 2003               | Fall 2004    | Fall 2005    | Fall 2006    | Fall 2007    |
| Freshmen     | 313                     | 370          | 671          | 742          | 545          |
| Sophomore    | 1,153                   | 1,169        | 1,073        | 1,269        | 1,052        |
| Junior       | 1,242                   | 1,095        | 1,093        | 1,076        | 1,126        |
| Senior       | 101                     | 110          | 43           | 34           | 47           |
| Unclassified | 54                      | 61           | 55           | 46           | 20           |
| <b>Total</b> | <b>2,863</b>            | <b>2,805</b> | <b>2,935</b> | <b>3,167</b> | <b>2,790</b> |

|              | White Transfer Students |             |             |             |             |
|--------------|-------------------------|-------------|-------------|-------------|-------------|
|              | Fall 2003               | Fall 2004   | Fall 2005   | Fall 2006   | Fall 2007   |
| Freshmen     | 11%                     | 13%         | 23%         | 23%         | 20%         |
| Sophomore    | 40%                     | 42%         | 37%         | 40%         | 38%         |
| Junior       | 43%                     | 39%         | 37%         | 34%         | 40%         |
| Senior       | 4%                      | 4%          | 1%          | 1%          | 2%          |
| Unclassified | 2%                      | 2%          | 2%          | 1%          | 1%          |
| <b>Total</b> | <b>100%</b>             | <b>100%</b> | <b>100%</b> | <b>100%</b> | <b>100%</b> |

Note: Attendance status is based upon the EIS file and only reflects students who transferred in the Fall term. The totals are less than reported elsewhere in this report.

Source: EIS and TSS

Table 10  
 University System of Maryland  
 Maryland Community College Transfer Student Four-Year Graduation Rates  
 FY 2000 - 2007 Cohorts

**Number of Community College Transfers**

|                  | Cohort Size | Graduation Rates |        |        |        |
|------------------|-------------|------------------|--------|--------|--------|
|                  |             | 2-year           | 3-year | 4-year | 5-year |
| <b>USM</b>       |             |                  |        |        |        |
| FY 2000          | 6,621       | 700              | 2,467  | 3,632  | 4,136  |
| FY 2001          | 6,963       | 659              | 2,444  | 3,538  | 4,052  |
| FY 2002          | 7,179       | 730              | 2,422  | 3,586  | 4,175  |
| FY 2003          | 7,063       | 644              | 2,447  | 3,598  | 4,095  |
| FY 2004          | 7,706       | 769              | 2,733  | 3,959  | 4,487  |
| FY 2005          | 8,048       | 821              | 2,696  | 3,888  |        |
| FY 2006          | 8,526       | 890              | 2,987  |        |        |
| FY 2007          | 8,974       | 920              |        |        |        |
| <b>Bowie</b>     |             |                  |        |        |        |
| FY 2000          | 316         | 32               | 118    | 159    | 191    |
| FY 2001          | 301         | 36               | 107    | 148    | 165    |
| FY 2002          | 377         | 43               | 121    | 181    | 202    |
| FY 2003          | 340         | 33               | 109    | 166    | 198    |
| FY 2004          | 264         | 25               | 90     | 138    | 160    |
| FY 2005          | 453         | 29               | 89     | 149    |        |
| FY 2006          | 290         | 17               | 77     |        |        |
| FY 2007          | 281         | 29               |        |        |        |
| <b>Coppin</b>    |             |                  |        |        |        |
| FY 2000          | 168         | 5                | 24     | 52     | 67     |
| FY 2001          | 137         | 8                | 33     | 48     | 51     |
| FY 2002          | 180         | 12               | 36     | 71     | 84     |
| FY 2003          | 140         | 6                | 24     | 43     | 53     |
| FY 2004          | 132         | 8                | 24     | 43     | 57     |
| FY 2005          | 197         | 12               | 54     | 77     |        |
| FY 2006          | 219         | 4                | 33     |        |        |
| FY 2007          | 214         | 7                |        |        |        |
| <b>Frostburg</b> |             |                  |        |        |        |
| FY 2000          | 308         | 51               | 131    | 195    | 208    |
| FY 2001          | 307         | 39               | 123    | 170    | 197    |
| FY 2002          | 333         | 41               | 136    | 202    | 234    |
| FY 2003          | 335         | 41               | 119    | 176    | 198    |
| FY 2004          | 285         | 33               | 106    | 152    | 165    |
| FY 2005          | 268         | 26               | 104    | 144    |        |
| FY 2006          | 277         | 37               | 112    |        |        |
| FY 2007          | 283         | 41               |        |        |        |
| <b>Salisbury</b> |             |                  |        |        |        |
| FY 2000          | 432         | 52               | 193    | 291    | 310    |
| FY 2001          | 485         | 52               | 226    | 321    | 347    |
| FY 2002          | 522         | 63               | 197    | 308    | 361    |
| FY 2003          | 559         | 49               | 233    | 353    | 390    |
| FY 2004          | 519         | 66               | 224    | 331    | 363    |
| FY 2005          | 513         | 50               | 202    | 314    |        |
| FY 2006          | 569         | 61               | 253    |        |        |
| FY 2007          | 601         | 57               |        |        |        |

**Percent Graduating**

|                  | Graduation Rates |        |        |        |
|------------------|------------------|--------|--------|--------|
|                  | 2-year           | 3-year | 4-year | 5-year |
| <b>USM</b>       |                  |        |        |        |
| FY 2000          | 11%              | 37%    | 55%    | 62%    |
| FY 2001          | 9%               | 35%    | 51%    | 58%    |
| FY 2002          | 10%              | 34%    | 50%    | 58%    |
| FY 2003          | 9%               | 35%    | 51%    | 58%    |
| FY 2004          | 10%              | 35%    | 51%    | 58%    |
| FY 2005          | 10%              | 33%    | 48%    |        |
| FY 2006          | 10%              | 35%    |        |        |
| FY 2007          | 10%              |        |        |        |
| <b>Bowie</b>     |                  |        |        |        |
| FY 2000          | 10%              | 37%    | 50%    | 60%    |
| FY 2001          | 12%              | 36%    | 49%    | 55%    |
| FY 2002          | 11%              | 32%    | 48%    | 54%    |
| FY 2003          | 10%              | 32%    | 49%    | 58%    |
| FY 2004          | 9%               | 34%    | 52%    | 61%    |
| FY 2005          | 6%               | 20%    | 33%    |        |
| FY 2006          | 6%               | 27%    |        |        |
| FY 2007          | 10%              |        |        |        |
| <b>Coppin</b>    |                  |        |        |        |
| FY 2000          | 3%               | 14%    | 31%    | 40%    |
| FY 2001          | 6%               | 24%    | 35%    | 37%    |
| FY 2002          | 7%               | 20%    | 39%    | 47%    |
| FY 2003          | 4%               | 17%    | 31%    | 38%    |
| FY 2004          | 6%               | 18%    | 33%    | 43%    |
| FY 2005          | 6%               | 27%    | 39%    |        |
| FY 2006          | 2%               | 15%    |        |        |
| FY 2007          | 3%               |        |        |        |
| <b>Frostburg</b> |                  |        |        |        |
| FY 2000          | 17%              | 43%    | 63%    | 68%    |
| FY 2001          | 13%              | 40%    | 55%    | 64%    |
| FY 2002          | 12%              | 41%    | 61%    | 70%    |
| FY 2003          | 12%              | 36%    | 53%    | 59%    |
| FY 2004          | 12%              | 37%    | 53%    | 58%    |
| FY 2005          | 10%              | 39%    | 54%    |        |
| FY 2006          | 13%              | 40%    |        |        |
| FY 2007          | 14%              |        |        |        |
| <b>Salisbury</b> |                  |        |        |        |
| FY 2000          | 12%              | 45%    | 67%    | 72%    |
| FY 2001          | 11%              | 47%    | 66%    | 72%    |
| FY 2002          | 12%              | 38%    | 59%    | 69%    |
| FY 2003          | 9%               | 42%    | 63%    | 70%    |
| FY 2004          | 13%              | 43%    | 64%    | 70%    |
| FY 2005          | 10%              | 39%    | 61%    |        |
| FY 2006          | 11%              | 44%    |        |        |
| FY 2007          | 9%               |        |        |        |

Table 10  
 University System of Maryland  
 Maryland Community College Transfer Student Four-Year Graduation Rates  
 FY 2000 - 2007 Cohorts

**Number of Community College Transfers**

|               | Cohort Size | Graduation Rates |        |        |        |
|---------------|-------------|------------------|--------|--------|--------|
|               |             | 2-year           | 3-year | 4-year | 5-year |
| <b>Towson</b> |             |                  |        |        |        |
| FY 2000       | 1,336       | 116              | 502    | 755    | 847    |
| FY 2001       | 1,237       | 116              | 495    | 685    | 777    |
| FY 2002       | 1,347       | 118              | 489    | 734    | 846    |
| FY 2003       | 1,214       | 128              | 550    | 763    | 851    |
| FY 2004       | 1,335       | 149              | 594    | 837    | 907    |
| FY 2005       | 1,429       | 167              | 607    | 863    |        |
| FY 2006       | 1,483       | 178              | 666    |        |        |
| FY 2007       | 1,630       | 211              |        |        |        |
| <b>UB</b>     |             |                  |        |        |        |
| FY 2000       | 508         | 68               | 203    | 249    | 283    |
| FY 2001       | 550         | 78               | 209    | 254    | 288    |
| FY 2002       | 527         | 67               | 204    | 266    | 298    |
| FY 2003       | 490         | 56               | 191    | 243    | 274    |
| FY 2004       | 616         | 67               | 216    | 285    | 324    |
| FY 2005       | 677         | 70               | 206    | 280    |        |
| FY 2006       | 902         | 108              | 316    |        |        |
| FY 2007       | 872         | 94               |        |        |        |
| <b>UMB</b>    |             |                  |        |        |        |
| FY 2000       | 139         | 58               | 95     | 108    | 113    |
| FY 2001       | 173         | 79               | 129    | 136    | 146    |
| FY 2002       | 251         | 119              | 187    | 205    | 211    |
| FY 2003       | 131         | 63               | 105    | 112    | 114    |
| FY 2004       | 149         | 73               | 119    | 122    | 123    |
| FY 2005       | 146         | 75               | 122    | 130    |        |
| FY 2006       | 136         | 67               | 116    |        |        |
| FY 2007       | 156         | 67               |        |        |        |
| <b>UMBC</b>   |             |                  |        |        |        |
| FY 2000       | 996         | 87               | 322    | 499    | 581    |
| FY 2001       | 1,067       | 71               | 330    | 512    | 602    |
| FY 2002       | 1,120       | 79               | 316    | 483    | 593    |
| FY 2003       | 1,094       | 48               | 316    | 504    | 593    |
| FY 2004       | 1,040       | 73               | 315    | 509    | 608    |
| FY 2005       | 1,030       | 83               | 324    | 502    |        |
| FY 2006       | 947         | 70               | 304    |        |        |
| FY 2007       | 961         | 69               |        |        |        |
| <b>UMCP</b>   |             |                  |        |        |        |
| FY 2000       | 1,492       | 144              | 561    | 879    | 1,016  |
| FY 2001       | 1,418       | 104              | 523    | 857    | 971    |
| FY 2002       | 1,240       | 121              | 505    | 755    | 864    |
| FY 2003       | 1,295       | 136              | 514    | 797    | 889    |
| FY 2004       | 1,486       | 165              | 651    | 943    | 1,050  |
| FY 2005       | 1,341       | 201              | 619    | 834    |        |
| FY 2006       | 1,571       | 246              | 750    |        |        |
| FY 2007       | 1,557       | 229              |        |        |        |

**Percent Graduating**

|               | Graduation Rates |        |        |        |
|---------------|------------------|--------|--------|--------|
|               | 2-year           | 3-year | 4-year | 5-year |
| <b>Towson</b> |                  |        |        |        |
| FY 2000       | 9%               | 38%    | 57%    | 63%    |
| FY 2001       | 9%               | 40%    | 55%    | 63%    |
| FY 2002       | 9%               | 36%    | 54%    | 63%    |
| FY 2003       | 11%              | 45%    | 63%    | 70%    |
| FY 2004       | 11%              | 44%    | 63%    | 68%    |
| FY 2005       | 12%              | 42%    | 60%    |        |
| FY 2006       | 12%              | 45%    |        |        |
| FY 2007       | 13%              |        |        |        |
| <b>UB</b>     |                  |        |        |        |
| FY 2000       | 13%              | 40%    | 49%    | 56%    |
| FY 2001       | 14%              | 38%    | 46%    | 52%    |
| FY 2002       | 13%              | 39%    | 50%    | 57%    |
| FY 2003       | 11%              | 39%    | 50%    | 56%    |
| FY 2004       | 11%              | 35%    | 46%    | 53%    |
| FY 2005       | 10%              | 30%    | 41%    |        |
| FY 2006       | 12%              | 35%    |        |        |
| FY 2007       | 11%              |        |        |        |
| <b>UMB</b>    |                  |        |        |        |
| FY 2000       | 42%              | 68%    | 78%    | 81%    |
| FY 2001       | 46%              | 75%    | 79%    | 84%    |
| FY 2002       | 47%              | 75%    | 82%    | 84%    |
| FY 2003       | 48%              | 80%    | 85%    | 87%    |
| FY 2004       | 49%              | 80%    | 82%    | 83%    |
| FY 2005       | 51%              | 84%    | 89%    |        |
| FY 2006       | 49%              | 85%    |        |        |
| FY 2007       | 43%              |        |        |        |
| <b>UMBC</b>   |                  |        |        |        |
| FY 2000       | 9%               | 32%    | 50%    | 58%    |
| FY 2001       | 7%               | 31%    | 48%    | 56%    |
| FY 2002       | 7%               | 28%    | 43%    | 53%    |
| FY 2003       | 4%               | 29%    | 46%    | 54%    |
| FY 2004       | 7%               | 30%    | 49%    | 58%    |
| FY 2005       | 8%               | 31%    | 49%    |        |
| FY 2006       | 7%               | 32%    |        |        |
| FY 2007       | 7%               |        |        |        |
| <b>UMCP</b>   |                  |        |        |        |
| FY 2000       | 10%              | 38%    | 59%    | 68%    |
| FY 2001       | 7%               | 37%    | 60%    | 68%    |
| FY 2002       | 10%              | 41%    | 61%    | 70%    |
| FY 2003       | 11%              | 40%    | 62%    | 69%    |
| FY 2004       | 11%              | 44%    | 63%    | 71%    |
| FY 2005       | 15%              | 46%    | 62%    |        |
| FY 2006       | 16%              | 48%    |        |        |
| FY 2007       | 15%              |        |        |        |

Table 10  
 University System of Maryland  
 Maryland Community College Transfer Student Four-Year Graduation Rates  
 FY 2000 - 2007 Cohorts

**Number of Community College Transfers**

|             | Cohort Size | Graduation Rates |        |        |        |
|-------------|-------------|------------------|--------|--------|--------|
|             |             | 2-year           | 3-year | 4-year | 5-year |
| <b>UMES</b> |             |                  |        |        |        |
| FY 2000     | 58          | 8                | 18     | 29     | 30     |
| FY 2001     | 43          | 4                | 15     | 23     | 26     |
| FY 2002     | 28          | 3                | 9      | 13     | 13     |
| FY 2003     | 28          | 3                | 9      | 9      | 10     |
| FY 2004     | 124         | 2                | 30     | 41     | 50     |
| FY 2005     | 136         | 7                | 27     | 50     |        |
| FY 2006     | 77          | 6                | 20     |        |        |
| FY 2007     | 48          | 5                |        |        |        |
| <b>UMUC</b> |             |                  |        |        |        |
| FY 2000     | 868         | 79               | 300    | 416    | 490    |
| FY 2001     | 1,245       | 72               | 254    | 384    | 482    |
| FY 2002     | 1,254       | 64               | 222    | 368    | 469    |
| FY 2003     | 1,437       | 81               | 277    | 432    | 525    |
| FY 2004     | 1,756       | 108              | 364    | 558    | 680    |
| FY 2005     | 1,858       | 101              | 342    | 545    |        |
| FY 2006     | 2,055       | 96               | 340    |        |        |
| FY 2007     | 2,371       | 111              |        |        |        |

**Percent Graduating**

|             | Graduation Rates |        |        |        |
|-------------|------------------|--------|--------|--------|
|             | 2-year           | 3-year | 4-year | 5-year |
| <b>UMES</b> |                  |        |        |        |
| FY 2000     | 14%              | 31%    | 50%    | 52%    |
| FY 2001     | 9%               | 35%    | 53%    | 60%    |
| FY 2002     | 11%              | 32%    | 46%    | 46%    |
| FY 2003     | 11%              | 32%    | 32%    | 36%    |
| FY 2004     | 2%               | 24%    | 33%    | 40%    |
| FY 2005     | 5%               | 20%    | 37%    |        |
| FY 2006     | 8%               | 26%    |        |        |
| FY 2007     | 10%              |        |        |        |
| <b>UMUC</b> |                  |        |        |        |
| FY 2000     | 9%               | 35%    | 48%    | 56%    |
| FY 2001     | 6%               | 20%    | 31%    | 39%    |
| FY 2002     | 5%               | 18%    | 29%    | 37%    |
| FY 2003     | 6%               | 19%    | 30%    | 37%    |
| FY 2004     | 6%               | 21%    | 32%    | 39%    |
| FY 2005     | 5%               | 18%    | 29%    |        |
| FY 2006     | 5%               | 17%    |        |        |
| FY 2007     | 5%               |        |        |        |

Source: MHEC TSS and DIS files

Table 11  
 University System of Maryland  
 Maryland Community College Transfer Student Four-Year Graduation Rates  
 FY 2005

| Receiving Inst | All Transfer Students |                           | African-American Transfer Students |                           | White Transfer Students |                           |
|----------------|-----------------------|---------------------------|------------------------------------|---------------------------|-------------------------|---------------------------|
|                | Cohort N              | Four-Year Graduation Rate | Cohort N                           | Four-Year Graduation Rate | Cohort N                | Four-Year Graduation Rate |
| Bowie          | 453                   | 33%                       | 357                                | 32%                       | 45                      | 42%                       |
| Coppin         | 197                   | 39%                       | 195                                | 39%                       | *                       |                           |
| Frostburg      | 268                   | 54%                       | 18                                 | 56%                       | 226                     | 55%                       |
| Salisbury      | 513                   | 61%                       | 32                                 | 59%                       | 424                     | 62%                       |
| Towson         | 1,429                 | 60%                       | 137                                | 50%                       | 984                     | 63%                       |
| UB             | 677                   | 41%                       | 239                                | 33%                       | 329                     | 45%                       |
| UMB            | 146                   | 89%                       | 37                                 | 89%                       | 80                      | 89%                       |
| UMBC           | 1,030                 | 49%                       | 161                                | 39%                       | 573                     | 50%                       |
| UMCP           | 1,341                 | 62%                       | 176                                | 47%                       | 633                     | 63%                       |
| UMES**         | 136                   | 37%                       |                                    |                           |                         |                           |
| UMUC           | 1,858                 | 29%                       | 558                                | 26%                       | 871                     | 29%                       |
| USM            | 8,048                 | 48%                       | 1,910                              | 36%                       | 4,165                   | 53%                       |

\* Cohort <5

Note: UMES listed its transfer students as foreign

Source: TSS and DIS