



**TRANSFER STUDENTS TO THE
UNIVERSITY SYSTEM OF
MARYLAND:**

*Patterns of Enrollment and Success
Updated through FY 2009*

*Bowie State University (BSU)
Coppin State University (CSU)
Frostburg State University (FSU)
Salisbury University (SU)
Towson University (TU)
University of Baltimore (UB)
University of Maryland, Baltimore (UMB)
University of Maryland, Baltimore County (UMBC)
University of Maryland, College Park (UMCP)
University of Maryland Eastern Shore (UMES)
University of Maryland University College (UMUC)*

**Office of the Chief Operating Officer and
Vice Chancellor for Administration and Finance
University System of Maryland
June 2010**

Transfer Students to the University System of Maryland Patterns of Enrollment and Success Through FY 2009

Highlights:

- In FY 2009, 18,629 students transferred to a USM institution. Approximately 50 percent (9,468) came from a Maryland community college.
- The number of Maryland community college students who transferred in FY 2009 increased about 500 from FY 2008. Over the past five years (FY 2005 - FY 2009) that number has increased approximately 18 percent.
- Among Maryland community college students who transferred to a USM institution in FY 2009, twenty-four (24%) percent were African-American; five percent (5%) were Hispanic.
- Over the past five years (FY 2005 – FY 2009), the number of African-American community college students transferring to a USM institution has increased 17 percent, while the number of Hispanic community college transfer students has grown by 27 percent.
- In FY 2009, six of the 16 Maryland public two-year institutions – Montgomery College, Baltimore County Community College, Anne Arundel Community College, Howard, Prince George’s Community College, and the College of Southern Maryland—supplied approximately three-fourths of all new Maryland community college transfers to USM institutions.
- The largest proportion of Maryland community college students who transferred to USM institutions in FY 2009 enrolled in the following program areas: business and management (25%), social sciences (11%), computer and information science (8%), education (7%), and the health professions (7%). This was consistent with historical trends.
- Seventy percent (70%) of Maryland community college students who transferred to USM institutions in FY 2009 enrolled as full-time students (based on fall 2008 enrollments), which was an increase from 66% in fall 2007. Although a gap still remains, full-time enrollment of African-American transfers increased at a slightly faster rate from 53% in FY 2008 (fall 2007) to 58% in FY 2009 (fall 2008).
- Eighty percent (80%) Maryland community college students who transferred to a USM institution in FY 2009 (based on fall 2008 enrollment) entered with either sophomore or junior status.
- Forty-nine percent (49%) of the FY 2006 cohort of Maryland community college transfers to USM institutions graduated within four years of transferring.
- Sixty-four percent (64%) of the FY 2006 (fall 2005) cohort of full-time Maryland community college transfers to USM institutions graduated within four years of transferring. This was a rate of success similar to the fall 2003 full-time, first-time new freshmen cohort six-year graduation rate of 67%.

Transfer Students to the University System of Maryland
Patterns of Enrollment and Success Through FY 2009

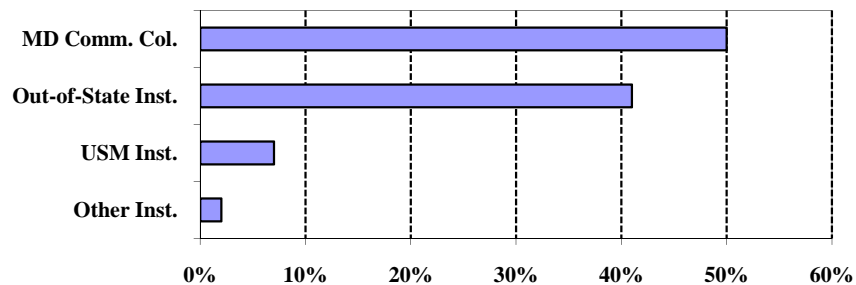
Background

The following report provides data on demographic characteristics, enrollment status, enrollment trends, and graduation rates for transfer students to institutions in the University System of Maryland. Most of the data supplied in this report were extracted from the 2009 Transfer Student System (TSS) data file.¹ The TSS was originally designed by the Maryland Higher Education Commission (MHEC), the University System of Maryland (USM), and the Maryland community colleges to provide feedback to the community colleges about the success of their students. The TSS also collects data on students who transferred across USM institutions, from other Maryland institutions, and from out-of-state institutions. Those data are presented in tables that appear in the appendix of this report. In addition, the USM and the Maryland Association of Community Colleges' Joint Leadership Council, Committee on Access and Transfer, examine specific transfer issues to facilitate the relative ease of transfer between the segments of higher education. The data affirm that transfer students are a vital segment of our undergraduate population. Because all TSS data are continuously updated by the institutions, the information contained in this report is not comparable to information found in reports from prior years. The information in this report reflects the most recent updates to data from FY 2005 through FY 2009. For further information, please contact Chad Muntz, cmuntz@usmd.edu, 301-445-2737.

First-time Transfers to USM²

First-time transfers make up a substantial part of newly enrolled undergraduate students at USM institutions. Approximately 18,600 students transferred into USM institutions in FY 2009 (including summer 2008, fall 2008, and spring 2009 semesters). This represents 17% of all undergraduate students attending a USM institution last fiscal year. Half of the students who transferred to a USM institution came from a Maryland community college.

Figure 1
Transfers to USM Institutions By Source of Transfer FY 2009



¹ The TSS data files were matched with the fall Enrollment Information System (EIS) data files to provide additional information on enrollment status and student level upon entry.

² First-time transfers are defined as students transferring for the first time from a higher education institution with 12 or more credits.

Transfer Students to the University System of Maryland
Patterns of Enrollment and Success Through FY 2009

First-Time Community College Transfers to the USM in FY 2009

Enrollment Growth

Over 9,400 new students transferred from a Maryland community college to a USM institution in FY 2009. Over the past 5 years (FY 2005 – FY 2009), the number of new Maryland community college transfer students has grown 18 percent from 8,048 to 9,468.

Since FY 2005, the number of Maryland community college transfers has grown an average of 3.3% annually. Those experiencing the most growth between FY 2005- FY 2009 were Towson (+460), UMUC (+443), UMCP (+317), Salisbury (+144), UB (+116), Frostburg (+55), Coppin (+45), UMBC (+29) and UMB (+16). Only Bowie (-161) and UMES (-44) have fewer community college transfers in FY 2009 than FY 2005.

Selected Demographics

African-American students make up about a quarter of the transfer students from Maryland community colleges entering USM institutions. Hispanic students comprise five percent of the community college transfer students and have increased 27% since FY 2005. The proportion of white students continues to decline, and now represent 50 percent of the community college transfers. The numbers of community college transfers from all racial groups have grown since FY 2005 with the Hispanic population increasing the fastest (27%) and the white population increasing at the slowest rate (14%) since FY 2005.

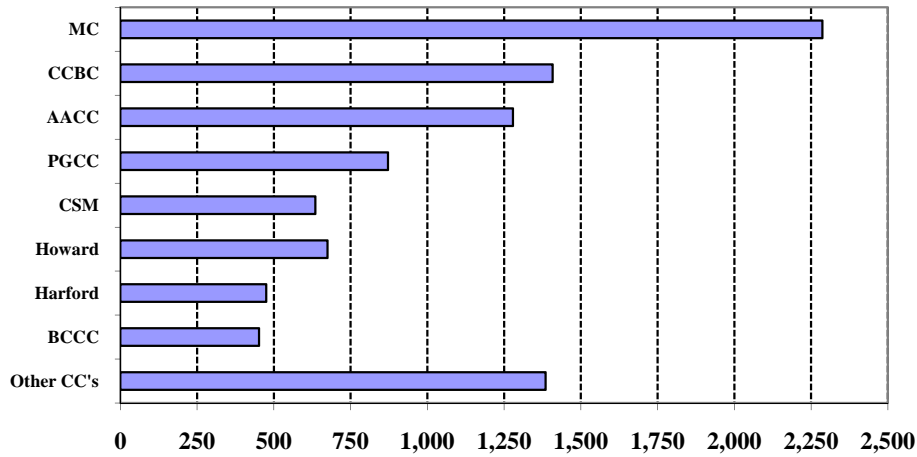
Approximately 57% of Maryland community college transfers to USM institutions were female. The average age of first-time community college transfer students to USM institutions was significantly above that of new freshmen. The average age among Maryland community college transfers was 25 compared to an average age of 19 among new freshmen. However, almost 60 percent of these transfer students were between 20-24 years of age.

Transfer and Enrollment Patterns

Three out of four Maryland community college students transferring to the USM in FY 2009 came from six of the state's 16 public two-year institutions (Montgomery—2,287, Baltimore County—1,408, Anne Arundel—1,279, Prince George's—880, Howard—675, and CSM—635 - See Figure 2). Nine community colleges saw five-year highs in the number of new transfer students – Anne Arundel, Carroll, Cecil, Chesapeake, Frederick, Garrett, Hagerstown, Harford, Howard and Montgomery.

Transfer Students to the University System of Maryland
Patterns of Enrollment and Success Through FY 2009

Figure 2
Maryland Community College Transfers to USM Institutions
FY 2009

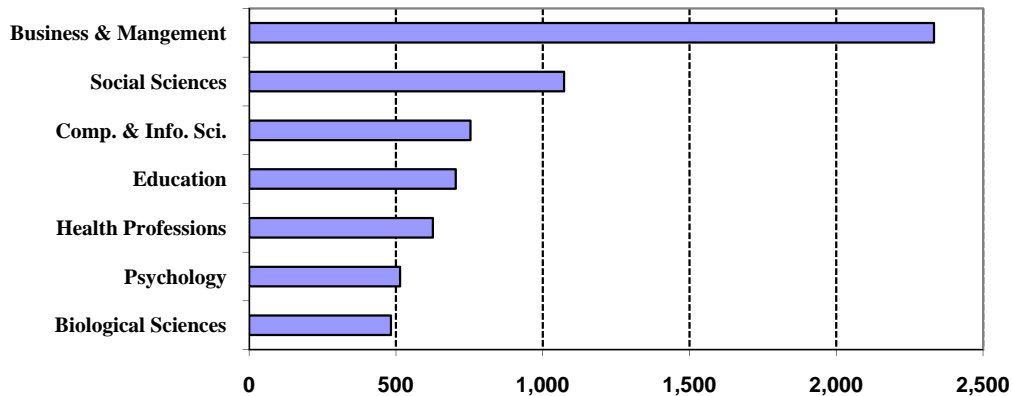


In FY 2009, four USM institutions – Towson, UMBC, UMCP, and UMUC had at least one new community college transfer student from each of the 16 Maryland community colleges. The five USM institutions enrolling the largest share of new Maryland community college transfers were: UMUC (2,301), Towson (1,889), UMCP (1,658), UMBC (1,059), and UB (793). Together, these five institutions enrolled 86 percent of all Maryland community college transfers to the USM.

Programs of Study

Of the Maryland community college students who transferred to USM in FY 2009, 24% entered programs in business and management, 12% in the social sciences, 8% in computer and information science, 7% in education, and 7% in the health professions. Eight percent of these students had an undeclared major.

Figure 3
Maryland Community College Transfers to USM Institutions
By Program Area at Time of Transfer
FY 2009



Transfer Students to the University System of Maryland
Patterns of Enrollment and Success Through FY 2009

Fall Attendance Patterns and Student Level

Sixty-eight percent of all Maryland community college students who transferred to USM institutions in FY 2009 did so in the fall semester. Of those community college transfer students who entered in fall 2008, 70 percent attended on a full-time basis. The percentage of African-American transfer students attending full-time was 58 percent compared to 76 percent of white transfer students.

The African-American community college transfer student enrollment was largest at UMUC (29%) followed by UB (12%), Bowie (11%), UMCP (11%), and Coppin (10%). In contrast, white transfer student enrollment was largest at Towson (25%) followed by UMUC (18%), UMCP (18%), and UMBC (12%). Our fastest growing group, Latino, was primarily found at UMCP (36%) followed by UMUC (22%), UMBC (14%) and Towson (12%).

The largest proportion of Maryland community college students who transferred to USM institutions in FY 2009 entered as either sophomores or juniors was 80% (fall 2008), which was up from 74% in FY 2008 (fall 2007). Sixty-eight percent of African-American community college transfer students entered as sophomores or juniors compared to 83 percent of white students. The upward trend in the percentage of students entering as with more credits is positive.

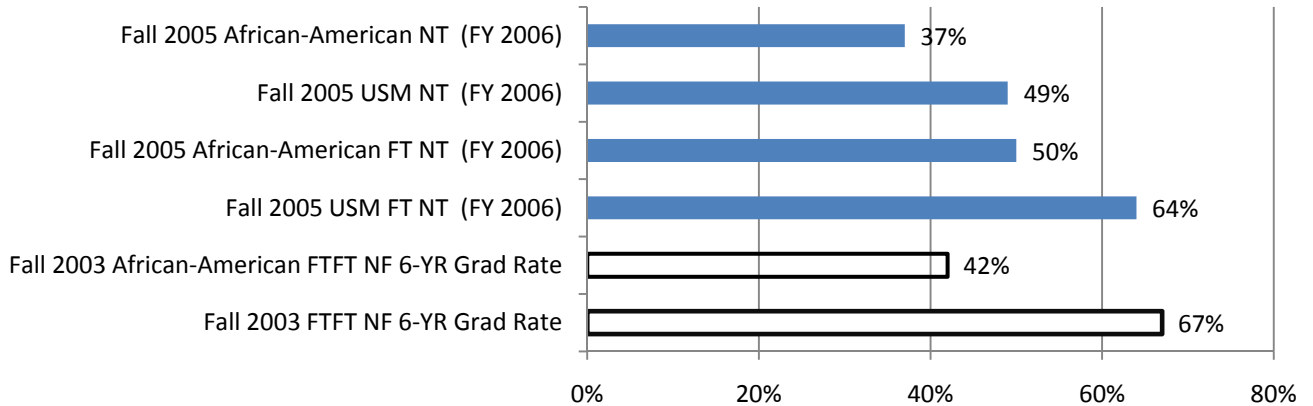
Graduation Rates

Of those Maryland community college transfers who enrolled in FY 2006, 49 percent graduated within four years at the same institution as entry. The graduation rate of Maryland community college transfers to the USM after four years was below that of new freshmen after six years (fall 2003 new freshmen cohort 62% at same institution as entry and 67% anywhere in USM). Given the differing entering attendance status, this lower graduation rate is to be expected.

Attendance status appeared to impact graduation rates for transfer students significantly. Transfers students attending part-time made up 30% of the fall 2007 student cohort in FY 2006. If the four-year graduation rate was calculated using full-time students, the graduation rate was comparable to the new freshmen cohort (64% for the FY 2006 full-time Maryland community college transfers versus 67% of the fall 2003 new freshmen).

Of those African-American community college transfers who enrolled at a USM institution in FY 2006, 37 percent graduated within four years, down from 40 percent for the FY 2003 cohort. Forty-two percent of the African-American community college transfers attend part-time. After removing part-time students, the FY 2006 African-American transfer 4-year graduation rate increased to 50%.

Figure 4
Maryland Community College Transfers and USM New Freshmen Graduation Rates
New Transfer 4 Year VS New Freshmen 6 Year



The lower overall community college transfer graduation rate is partially explained by the large numbers of part-time community college transfer students. Although there has been a significant portion of Maryland Community College Students attending part-time, in recent years, the portion of full-time students has been increasing. This is encouraging as the future time-to-degree will be positively impacted by more full-time transfer students.

Within the USM, the four-year graduation rate for all FY 2006 Maryland community college transfers was highest at UMB (95%), UMCP (65%), Salisbury (63%), Towson (61%), and Frostburg (55%). Among African-American community college transfers to the USM, graduation rates were highest at UMB (93%), Salisbury (63%), UMCP (59%) and Bowie (44%).

Next Steps

The USM System Office will be share this information with campuses and with the University System of Maryland/Maryland Association of Community Colleges Joint Leadership Council, Committee on Transfer and Articulation. The information will also further inform discussions about *Closing the Achievement Gap Initiative*.

APPENDIX

Table 1
 University System of Maryland Transfer Students
 By Type of Institution Transferred From
 By Receiving Institution
 FY 2009

Number of Transfers

	MD Comm Coll.	USM Inst.	MSU or SMCM	MD Private	Out-of- State	Total Transfers
Bowie	292	70	24	9	216	611
Coppin	242	0	0	0	0	242
Frostburg	323	27	0	3	179	532
Salisbury	657	78	5	18	278	1,036
Towson	1,889	1	0	3	1,182	3,075
UB	793	0	0	0	0	793
UMB	162	68	4	14	65	313
UMBC	1,059	116	25	32	361	1,593
UMCP	1,658	279	18	54	1,008	3,017
UMES	92	56	3	1	30	182
UMUC	2,301	584	75	47	4,228	7,235
USM	9,468	1,279	154	181	7,547	18,629

Percent of Transfers

	MD Comm Coll.	USM Inst.	MSU or SMCM	MD Private	Out-of- State	Total Transfers
Bowie	48%	11%	4%	1%	35%	100%
Coppin	100%	0%	0%	0%	0%	100%
Frostburg	61%	5%	0%	1%	34%	100%
Salisbury	63%	8%	0%	2%	27%	100%
Towson	61%	0%	0%	0%	38%	100%
UB	100%	0%	0%	0%	0%	100%
UMB	52%	22%	1%	4%	21%	100%
UMBC	66%	7%	2%	2%	23%	100%
UMCP	55%	9%	1%	2%	33%	100%
UMES	51%	31%	2%	1%	16%	100%
UMUC	32%	8%	1%	1%	58%	100%
USM	51%	7%	1%	1%	41%	100%

Note: Transfers are the number of undergraduates enrolled for the first time with 12 or more credits.

MSU=Morgan State University; SMCM=St. Mary's College of Maryland

Source: TSS

Table 2
 University System of Maryland
 First-time Transfers to USM Institutions
 FY 2005 - FY 2009

	FY 2005	FY 2006	FY 2007	FY 2008	FY 2009	FY 05-09 Δ Chg.
MD Comm College % of Total	8,048 49%	8,526 44%	8,974 48%	8,933 50%	9,468 51%	18%
USM Institutions % of Total	1,181 7%	1,268 7%	1,218 7%	1,217 7%	1,279 7%	8%
MSU & SMCM % of Total	106 1%	127 1%	131 1%	143 1%	154 1%	45%
Md Private Inst. % of Total	203 1%	227 1%	201 1%	185 1%	181 1%	-11%
Out-of-State Inst. & Unk % of Total	6,979 42%	9,348 48%	8,129 44%	7,460 42%	7,547 41%	8%
Total % of Total	16,517 100%	19,496 100%	18,653 100%	17,938 100%	18,629 100%	13%

MSU=Morgan State University; SMCM=St. Mary's College of Maryland

Source: TSS

Table 3
 University System of Maryland
 Maryland Community College Transfers by Ethnicity
 FY 2005 - FY 2009

	FY 2005	FY 2006	FY 2007	FY 2008	FY 2009	FY 05-09 Δ Chg.
African-American % of Total	1,910 24%	2,010 24%	2,165 24%	2,130 24%	2,231 24%	17%
Hispanic % of Total	372 5%	379 4%	382 4%	379 4%	473 5%	27%
Other Minority % of Total	629 8%	714 8%	731 8%	731 8%	835 9%	33%
White % of Total	4,166 52%	4,374 51%	4,599 51%	4,611 51%	4,766 50%	14%
Other/Unknown % of Total	971 12%	1,049 12%	1,097 12%	1,142 13%	1,163 12%	20%
Total % of Total	8,048 100%	8,526 100%	8,974 100%	8,993 100%	9,468 100%	18%

Note: Other includes foreign students

Source: TSS

Table 4
 University System of Maryland
 Maryland Community College Transfers By Institution
 FY 2005 - FY 2009

	FY 2005	FY 2006	FY 2007	FY 2008	FY 2009	Avg. Annual Change	FY 08-09 Δ Chg.
Bowie	453	290	281	302	292	-8.4%	-3%
Coppin	197	219	214	199	242	4.2%	22%
Frostburg	268	277	283	313	323	3.8%	3%
Salisbury	513	569	601	524	657	5.1%	25%
Towson	1,429	1,483	1,630	1,729	1,889	5.7%	9%
UB	677	902	872	843	793	3.2%	-6%
UMB	146	136	156	164	162	2.1%	-1%
UMBC	1,030	947	961	1,052	1,059	0.6%	1%
UMCP	1,341	1,571	1,557	1,652	1,658	4.3%	0%
UMES	136	77	48	97	92	-7.5%	-5%
UMUC	1,858	2,055	2,371	2,118	2,301	4.4%	9%
USM	8,048	8,526	8,974	8,993	9,468	3.3%	6%

Source: TSS

Table 5
 University System of Maryland
 Maryland Community College Transfers By Sending Institution
 FY 2005 - FY 2009

	FY 2005	FY 2006	FY 2007	FY 2008	FY 2009	Avg. Annual Change	FY 08-09 Δ Chg.
Allegany	134	119	132	126	110	-3.9%	-13%
Anne Arundel	1,176	1,213	1,261	1,222	1,279	1.7%	5%
Baltimore City	373	716	437	450	452	3.9%	0%
Carroll	214	190	220	219	279	5.4%	27%
CCBC	1,044	997	1,386	1,417	1,408	6.2%	-1%
Cecil	47	49	49	56	71	8.6%	27%
CSM	643	688	729	655	635	-0.3%	-3%
Chesapeake	121	108	115	119	159	5.6%	34%
Frederick	239	269	261	342	372	9.3%	9%
Garrett	38	36	38	40	54	7.3%	35%
Hagerstown	127	147	136	153	173	6.4%	13%
Harford	437	381	422	480	475	1.7%	-1%
Howard	578	575	606	628	675	3.2%	7%
Montgomery	1,776	1,911	1,996	2,041	2,287	5.2%	12%
Prince George's	928	914	940	880	872	-1.2%	-1%
Wor-Wic	173	213	246	165	167	-0.7%	1%
Total	8,048	8,526	8,974	8,993	9,468	3.3%	6%

Source: TSS

Table 6
 University System of Maryland
 Maryland Community College Transfers By Institution
 FY 2008

Sending Inst	Receiving Institution											
	Bowie	Coppin	Frostburg	Salisbury	Towson	UB	UMB	UMBC	UMCP	UMES	UMUC	USM
Allegany	1	0	86	1	6	2	2	3	2	1	6	110
Anne Arundel	32	10	23	93	287	128	20	203	197	8	278	1,279
Baltimore City	2	126	3	2	51	148	19	35	6	3	57	452
Carroll	0	0	0	25	125	25	3	38	31	1	31	279
CCBC	9	75	3	31	513	311	28	214	51	5	168	1,408
Cecil	0	0	0	23	20	8	0	5	8	1	6	71
Chesapeake	0	0	3	79	10	2	0	9	9	13	34	159
CSM	21	0	13	45	89	10	7	18	93	2	337	635
Frederick	0	2	35	28	106	3	6	26	75	4	87	372
Garrett	1	0	39	0	6	0	0	1	2	0	5	54
Hagerstown	2	0	60	25	21	2	2	7	8	0	46	173
Harford	1	1	7	45	250	42	10	34	34	2	49	475
Howard	17	6	7	39	133	44	19	167	130	7	106	675
Montgomery	33	8	36	79	224	53	27	261	865	31	670	2,287
Prince George's	173	13	8	11	41	13	16	36	143	14	404	872
Wor-Wic	0	1	0	131	7	2	3	2	4	0	17	167
Total	292	242	323	657	1,889	793	162	1,059	1,658	92	2,301	9,468

Source: TSS

Table 7
 University System of Maryland
 Maryland Community College Transfer Student Program Area
 FY 2005 - 2009

	FY 2005	FY 2006	FY 2007	FY 2008	FY 2009	FY 09 % of total	FY 05-09 Δ Chg.
Agric. & Nat. Res.	47	59	50	86	89	1%	91%
Arch. & Env'tl. Des.	0	0	0	3	0	0%	0%
Area Studies	39	42	30	27	26	0%	-65%
Biological Sciences	371	380	374	443	483	5%	33%
Business Managmt.	1,840	1,569	2,224	2,115	2,333	25%	31%
Communications	269	306	347	356	375	4%	37%
Comp. & Info. Sci.	708	669	785	715	754	8%	6%
Education	589	639	624	621	704	7%	20%
Engineering	192	207	188	198	230	2%	18%
Fine & Applied Arts	198	184	194	222	242	3%	23%
Foreign Languages	44	41	39	62	56	1%	36%
Health Professions	554	562	565	596	626	7%	16%
Home Economics	58	44	49	43	46	0%	-35%
Law	106	110	122	112	110	1%	3%
Letters	228	262	246	303	299	3%	35%
Mathematics	56	71	49	78	66	1%	17%
Physical Science	63	81	84	95	89	1%	41%
Psychology	424	411	491	513	514	5%	24%
Public Affairs	306	351	353	350	413	4%	39%
Social Sciences	872	944	1,030	1,060	1,073	11%	24%
Interdisciplinary Studies*	226	291	276	250	299	3%	30%
Natural Sci. Tech.	6	7	7	8	5	0%	-8%
Undeclared	852	1,296	847	737	636	7%	-23%
Total	8,048	8,526	8,974	8,993	9,468	100%	18%

* Prior to FY 2002 all bachelor's degree-seeking undergraduates at UMUC are enrolled in its general studies programs and when completed are awarded a degree in Interdisciplinary Studies

Source: TSS

Table 8
 University System of Maryland
 Maryland Community College Transfers Attendance Patterns
 Fall 2004 - Fall 2008

All Transfer Students					
	Fall 2004	Fall 2005	Fall 2006	Fall 2007	Fall 2008
Full-Time					
N	3,610	3,864	3,954	3,672	4,479
%	68%	69%	66%	66%	70%
Part-Time					
N	1,684	1,707	2,051	1,872	1,947
%	32%	31%	34%	34%	30%
Total	5,294	5,571	6,005	5,544	6,426

African-American Transfer Students					
	Fall 2004	Fall 2005	Fall 2006	Fall 2007	Fall 2008
Full-Time					
N	672	713	754	730	861
%	57%	56%	53%	53%	58%
Part-Time					
N	505	562	667	643	635
%	43%	44%	47%	47%	42%
Total	1,177	1,275	1,421	1,373	1,496

White Transfer Students					
	Fall 2004	Fall 2004	Fall 2006	Fall 2007	Fall 2008
Full-Time					
N	2,012	2,201	2,301	2,040	2,547
%	72%	75%	73%	73%	76%
Part-Time					
N	793	734	866	750	818
%	28%	25%	27%	27%	24%
Total	2,805	2,935	3,167	2,790	3,365

Note: Attendance status is based upon the EIS file and only reflects students who transferred in the Fall term. The totals are less than reported elsewhere in this report.

Source: EIS and TSS

Table 9
University System of Maryland
Maryland Community College Transfer Student Level
Fall 2004 - Fall 2008

Number of Transfer Students

	All Transfer Students				
	Fall 2004	Fall 2005	Fall 2006	Fall 2007	Fall 2008
Freshmen	881	1,458	1,687	1,267	1,121
Sophomore	2,062	1,978	2,181	1,964	2,475
Junior	1,993	1,938	1,946	2,164	2,663
Senior	218	82	82	98	107
Unclassified	140	115	111	51	60
Total	5,294	5,571	6,007	5,544	6,426

Percent of Transfer Students

	All Transfer Students				
	Fall 2004	Fall 2005	Fall 2006	Fall 2007	Fall 2008
Freshmen	17%	26%	28%	23%	17%
Sophomore	39%	36%	36%	35%	39%
Junior	38%	35%	32%	39%	41%
Senior	4%	1%	1%	2%	2%
Unclassified	3%	2%	2%	1%	1%
Total	100%	100%	100%	100%	100%

	African-American Transfer Students				
	Fall 2004	Fall 2005	Fall 2006	Fall 2007	Fall 2008
Freshmen	296	440	521	391	371
Sophomore	364	395	408	419	481
Junior	429	386	428	510	597
Senior	54	22	29	33	30
Unclassified	34	32	35	20	17
Total	1,177	1,275	1,421	1,373	1,496

	African-American Transfer Students				
	Fall 2004	Fall 2005	Fall 2006	Fall 2007	Fall 2008
Freshmen	25%	35%	37%	28%	25%
Sophomore	31%	31%	29%	31%	32%
Junior	36%	30%	30%	37%	40%
Senior	5%	2%	2%	2%	2%
Unclassified	3%	3%	2%	1%	1%
Total	100%	100%	100%	100%	100%

	White Transfer Students				
	Fall 2004	Fall 2005	Fall 2006	Fall 2007	Fall 2008
Freshmen	370	671	742	545	505
Sophomore	1,169	1,073	1,269	1,052	1,411
Junior	1,095	1,093	1,076	1,126	1,381
Senior	110	43	34	47	46
Unclassified	61	55	46	20	22
Total	2,805	2,935	3,167	2,790	3,365

	White Transfer Students				
	Fall 2004	Fall 2005	Fall 2006	Fall 2007	Fall 2008
Freshmen	13%	23%	23%	20%	15%
Sophomore	42%	37%	40%	38%	42%
Junior	39%	37%	34%	40%	41%
Senior	4%	1%	1%	2%	1%
Unclassified	2%	2%	1%	1%	1%
Total	100%	100%	100%	100%	100%

Note: Attendance status is based upon the EIS file and only reflects students who transferred in the Fall term. The totals are less than reported elsewhere in this report.

Source: EIS and TSS

Table 10
 University System of Maryland
 Maryland Community College Transfer Student Four-Year Graduation Rates
 FY 2001 - 2008 Cohorts

Number of Community College Transfers

	Cohort Size	Graduation Rates			
		2-year	3-year	4-year	5-year
USM					
FY 2001	6,963	659	2,444	3,538	4,052
FY 2002	7,179	730	2,422	3,586	4,175
FY 2003	7,063	644	2,447	3,598	4,095
FY 2004	7,706	769	2,733	3,959	4,487
FY 2005	8,048	821	2,696	3,888	4,437
FY 2006	8,526	890	2,987	4,210	
FY 2007	8,974	920	3,002		
FY 2008	8,993	969			
USM w/out UMUC					
FY 2001	5,718	587	2,190	3,154	3,570
FY 2002	5,925	666	2,200	3,218	3,706
FY 2003	5,626	563	2,170	3,166	3,570
FY 2004	5,950	661	2,369	3,401	3,807
FY 2005	6,190	720	2,354	3,343	3,770
FY 2006	6,471	794	2,647	3,716	
FY 2007	6,603	809	2,658		
FY 2008	6,875	878			
Bowie					
FY 2001	301	36	107	148	165
FY 2002	377	43	121	181	202
FY 2003	340	33	109	166	198
FY 2004	264	25	90	138	160
FY 2005	453	29	89	149	185
FY 2006	290	17	77	130	
FY 2007	281	29	84		
FY 2008	302	26			
Coppin					
FY 2001	137	8	33	48	51
FY 2002	180	12	36	71	84
FY 2003	140	6	24	43	53
FY 2004	132	8	24	43	57
FY 2005	197	12	54	77	91
FY 2006	219	4	33	74	
FY 2007	214	7	33		
FY 2008	199	18			
Frostburg					
FY 2001	307	39	123	170	197
FY 2002	333	41	136	202	234
FY 2003	335	41	119	176	198
FY 2004	285	33	106	152	165
FY 2005	268	26	104	144	160
FY 2006	277	37	112	152	
FY 2007	283	41	120		
FY 2008	313	61			

Percent Graduating

	Graduation Rates			
	2-year	3-year	4-year	5-year
USM				
FY 2001	9%	35%	51%	58%
FY 2002	10%	34%	50%	58%
FY 2003	9%	35%	51%	58%
FY 2004	10%	35%	51%	58%
FY 2005	10%	33%	48%	55%
FY 2006	10%	35%	49%	
FY 2007	10%	33%		
FY 2008	11%			
USM w/out UMUC				
FY 2001	10%	38%	55%	62%
FY 2002	11%	37%	54%	63%
FY 2003	10%	39%	56%	63%
FY 2004	11%	40%	57%	64%
FY 2005	12%	38%	54%	61%
FY 2006	12%	41%	57%	
FY 2007	12%	40%		
FY 2008	13%			
Bowie				
FY 2001	12%	36%	49%	55%
FY 2002	11%	32%	48%	54%
FY 2003	10%	32%	49%	58%
FY 2004	9%	34%	52%	61%
FY 2005	6%	20%	33%	41%
FY 2006	6%	27%	45%	
FY 2007	10%	30%		
FY 2008	9%			
Coppin				
FY 2001	6%	24%	35%	37%
FY 2002	7%	20%	39%	47%
FY 2003	4%	17%	31%	38%
FY 2004	6%	18%	33%	43%
FY 2005	6%	27%	39%	46%
FY 2006	2%	15%	34%	
FY 2007	3%	15%		
FY 2008	9%			
Frostburg				
FY 2001	13%	40%	55%	64%
FY 2002	12%	41%	61%	70%
FY 2003	12%	36%	53%	59%
FY 2004	12%	37%	53%	58%
FY 2005	10%	39%	54%	60%
FY 2006	13%	40%	55%	
FY 2007	14%	42%		
FY 2008	19%			

Table 10
 University System of Maryland
 Maryland Community College Transfer Student Four-Year Graduation Rates
 FY 2001 - 2008 Cohorts

Number of Community College Transfers

	Cohort Size	Graduation Rates			
		2-year	3-year	4-year	5-year
Salisbury					
FY 2001	485	52	226	321	347
FY 2002	522	63	197	308	361
FY 2003	559	49	233	353	390
FY 2004	519	66	224	331	363
FY 2005	513	50	202	314	348
FY 2006	569	61	253	365	
FY 2007	601	57	251		
FY 2008	524	76			
Towson					
FY 2001	1,237	116	495	685	777
FY 2002	1,347	118	489	734	846
FY 2003	1,214	128	550	763	851
FY 2004	1,335	149	594	837	907
FY 2005	1,429	167	607	863	960
FY 2006	1,483	178	666	909	
FY 2007	1,630	211	706		
FY 2008	1,729	223			
UB					
FY 2001	550	78	209	254	288
FY 2002	527	67	204	266	298
FY 2003	490	56	191	243	274
FY 2004	616	67	216	285	324
FY 2005	677	70	206	280	330
FY 2006	902	108	316	412	
FY 2007	872	94	288		
FY 2008	843	85			
UMB					
FY 2001	173	79	129	136	146
FY 2002	251	119	187	205	211
FY 2003	131	63	105	112	114
FY 2004	149	73	119	122	123
FY 2005	146	75	122	130	135
FY 2006	136	67	116	122	
FY 2007	156	67	125		
FY 2008	164	60			
UMBC					
FY 2001	1,067	71	330	512	602
FY 2002	1,120	79	316	483	593
FY 2003	1,094	48	316	504	593
FY 2004	1,040	73	315	509	608
FY 2005	1,030	83	324	502	578
FY 2006	947	70	304	480	
FY 2007	961	69	307		
FY 2008	1,052	89			

Percent Graduating

	Graduation Rates			
	2-year	3-year	4-year	5-year
Salisbury				
FY 2001	11%	47%	66%	72%
FY 2002	12%	38%	59%	69%
FY 2003	9%	42%	63%	70%
FY 2004	13%	43%	64%	70%
FY 2005	10%	39%	61%	68%
FY 2006	11%	44%	64%	
FY 2007	9%	42%		
FY 2008	15%			
Towson				
FY 2001	9%	40%	55%	63%
FY 2002	9%	36%	54%	63%
FY 2003	11%	45%	63%	70%
FY 2004	11%	44%	63%	68%
FY 2005	12%	42%	60%	67%
FY 2006	12%	45%	61%	
FY 2007	13%	43%		
FY 2008	13%			
UB				
FY 2001	14%	38%	46%	52%
FY 2002	13%	39%	50%	57%
FY 2003	11%	39%	50%	56%
FY 2004	11%	35%	46%	53%
FY 2005	10%	30%	41%	49%
FY 2006	12%	35%	46%	
FY 2007	11%	33%		
FY 2008	10%			
UMB				
FY 2001	46%	75%	79%	84%
FY 2002	47%	75%	82%	84%
FY 2003	48%	80%	85%	87%
FY 2004	49%	80%	82%	83%
FY 2005	51%	84%	89%	92%
FY 2006	49%	85%	90%	
FY 2007	43%	80%		
FY 2008	37%			
UMBC				
FY 2001	7%	31%	48%	56%
FY 2002	7%	28%	43%	53%
FY 2003	4%	29%	46%	54%
FY 2004	7%	30%	49%	58%
FY 2005	8%	31%	49%	56%
FY 2006	7%	32%	51%	
FY 2007	7%	32%		
FY 2008	8%			

Table 10
 University System of Maryland
 Maryland Community College Transfer Student Four-Year Graduation Rates
 FY 2001 - 2008 Cohorts

Number of Community College Transfers

	Cohort Size	Graduation Rates			
		2-year	3-year	4-year	5-year
UMCP					
FY 2001	1,418	104	523	857	971
FY 2002	1,240	121	505	755	864
FY 2003	1,295	136	514	797	889
FY 2004	1,486	165	651	943	1,050
FY 2005	1,341	201	619	834	923
FY 2006	1,571	246	750	1041	
FY 2007	1,557	229	731		
FY 2008	1,652	232			
UMES					
FY 2001	43	4	15	23	26
FY 2002	28	3	9	13	13
FY 2003	28	3	9	9	10
FY 2004	124	2	30	41	50
FY 2005	136	7	27	50	60
FY 2006	77	6	20	31	
FY 2007	48	5	13		
FY 2008	97	8			
UMUC					
FY 2001	1,245	72	254	384	482
FY 2002	1,254	64	222	368	469
FY 2003	1,437	81	277	432	525
FY 2004	1,756	108	364	558	680
FY 2005	1,858	101	342	545	667
FY 2006	2,055	96	340	494	
FY 2007	2,371	111	344		
FY 2008	2,118	91			

Percent Graduating

	Graduation Rates			
	2-year	3-year	4-year	5-year
UMCP				
FY 2001	7%	37%	60%	68%
FY 2002	10%	41%	61%	70%
FY 2003	11%	40%	62%	69%
FY 2004	11%	44%	63%	71%
FY 2005	15%	46%	62%	69%
FY 2006	16%	48%	66%	
FY 2007	15%	47%		
FY 2008	14%			
UMES				
FY 2001	9%	35%	53%	60%
FY 2002	11%	32%	46%	46%
FY 2003	11%	32%	32%	36%
FY 2004	2%	24%	33%	40%
FY 2005	5%	20%	37%	44%
FY 2006	8%	26%	40%	
FY 2007	10%	27%		
FY 2008	8%			
UMUC				
FY 2001	6%	20%	31%	39%
FY 2002	5%	18%	29%	37%
FY 2003	6%	19%	30%	37%
FY 2004	6%	21%	32%	39%
FY 2005	5%	18%	29%	36%
FY 2006	5%	17%	24%	
FY 2007	5%	15%		
FY 2008	4%			

Source: MHEC TSS and DIS files

Table 11
 University System of Maryland
 Maryland Community College Transfer Student Four-Year Graduation Rates
 FY 2006

Receiving Inst	All Transfer Students		African-American Transfer Students		White Transfer Students	
	Cohort N	Four-Year Graduation Rate	Cohort N	Four-Year Graduation Rate	Cohort N	Four-Year Graduation Rate
Bowie	290	44%	230	44%	35	54%
Coppin	219	34%	208	34%	5	40%
Frostburg	277	55%	24	42%	227	57%
Salisbury	569	63%	51	63%	480	65%
Towson	1,483	61%	129	40%	1,011	63%
UB	902	46%	285	40%	427	50%
UMB	136	95%	41	93%	67	93%
UMBC	947	49%	172	40%	499	52%
UMCP	1,571	65%	203	59%	746	64%
UMES	77	39%	32	34%	32	47%
UMUC	2,055	24%	635	19%	845	27%
USM	8,526	48%	2,010	37%	4,374	54%

Source: TSS and DIS