



TOPIC: SAT Percentile Distribution of First-Time Undergraduates

COMMITTEE: Education Policy

DATE OF COMMITTEE MEETING: January 26, 2011

SUMMARY: This report provides an overview of the 25th and 75th percentile combined fall 2010 SAT scores of entering freshmen. USM institutions enrolled over 11,000 freshmen this past fall. Generally, USM SAT scores were stable or improved over last fall for this entering class.

ALTERNATIVE(S): This report is for information only.

FISCAL IMPACT: This report is for information only.

CHANCELLOR'S RECOMMENDATION: This report is for information only.

COMMITTEE RECOMMENDATION:

DATE:

BOARD ACTION:

DATE:

SUBMITTED BY: Joseph F. Vivona (301) 445-1923



**SAT PERCENTILE DISTRIBUTIONS OF
FIRST-TIME UNDERGRADUATES
FALL 2006 - 2010**

Bowie State University (BSU)
Coppin State University (CSU)
Frostburg State University (FSU)
Salisbury University (SU)
Towson University (TU)
University of Baltimore (UB)
University of Maryland, Baltimore County (UMBC)
University of Maryland, College Park (UMCP)
University of Maryland Eastern Shore (UMES)

**Office of the Chief Operating Officer and
Vice Chancellor for Administration and Finance
University System of Maryland Office
January 2011**

SAT Percentile Distributions of First-Time Undergraduates

Fall 2006 - 2010

Background

The University System of Maryland institutions report SAT scores of first-time undergraduates to MHEC annually. The institutions report average SAT scores for the verbal and math sections, a verbal and math combined average score, and the 25th and 75th percentiles of the combined scores. The distributions include SAT scores for first-time, full-time, and part-time undergraduates at all USM institutions except UMB and UMUC. Included in this report are only the 25th-75th percentile combined math and critical reading scores to give decision-makers a sense of the score distributions for the middle 50 percent of first-time freshmen. For further information, contact Chad Muntz, cmuntz@usmd.edu (301) 445-2737.

Highlights

USM Trends

- In fall 2010, a total of 11,159 freshmen who enrolled at a USM institution reported SAT scores. This represented a decrease of 485 from fall 2009 (11,644), which was expected due to decreased new freshmen enrollment. Table 1 displays the combined SAT scores at the 25th and 75th percentiles for fall 2006 through fall 2010. Figure 1 depicts ranges for the fall 2010 distributions for each institution. Fifty percent of incoming freshmen received SAT scores in the range between the arrows on the graph.
- Most USM institutions experienced stable or improved combined 25th/75th percentile SAT scores between fall 2009 and fall 2010.
- Four institutions (Salisbury, Towson, UMBC, and UMCP) reported that at least three-quarters of their freshmen class had combined SAT scores greater than 1,000 in fall 2010.

Maryland Public High School Test-Taker Trends (College Board)

- 35,152 Maryland public school students took the SATs in 2009-2010 – a 4.7% increase from the year prior according to the College Board. This was the first year of an increase after two straight years of a decrease.
- Average SAT scores for 2009-10 college bound students from Maryland public high schools increased 3 points in critical reading (495) and also increased 3 points in mathematics (502) over the 2008-09 average scores according to The College Board.

National Trends from the National Center for Education Statistics (IPEDS)

- Nationally, USM institutions compare favorably with similar public Carnegie class institutions. Table 2 displays the most recent IPEDS data for fall 2009 SAT reading and mathematics scores. Highlighted are the USM institutions among a non-exhaustive, alphabetical list of similar Carnegie class institution.

SAT Percentile Distributions of First-Time Undergraduates Fall 2006 - 2010

Table 1
Trends in SAT 25th and 75th Percentile Scores
Fall 2006 – Fall 2010

	2006		2007		2008		2009		2010	
	25 th	75 th	25 th	75 th	25 th	75 th	25 th	75 th	25 th	75 th
UMCP	1190	1370	1210	1360	1190	1360	1220	1370	1220	1380
UMBC	1080	1280	1090	1280	1090	1280	1080	1270	1110	1290
SU	1020	1190	1030	1200	1040	1210	1060	1190	1050	1210
TU	990	1160	1010	1160	990	1150	1000	1150	1000	1150
UB	NA*	NA*	950	1120	850	1030	830	1040	850	1025
FSU	870	1060	860	1060	870	1060	870	1040	880	1070
BSU	810	950	800	930	800	950	800	940	820	940
CSU	770	910	790	900	800	890	810	930	790	910
UMES	710	900	730	900	742	900	760	910	770	920

*UB admitted the first freshmen class in fall 2007.

Figure 1
University System of Maryland
Fall 2010 SAT Percentiles

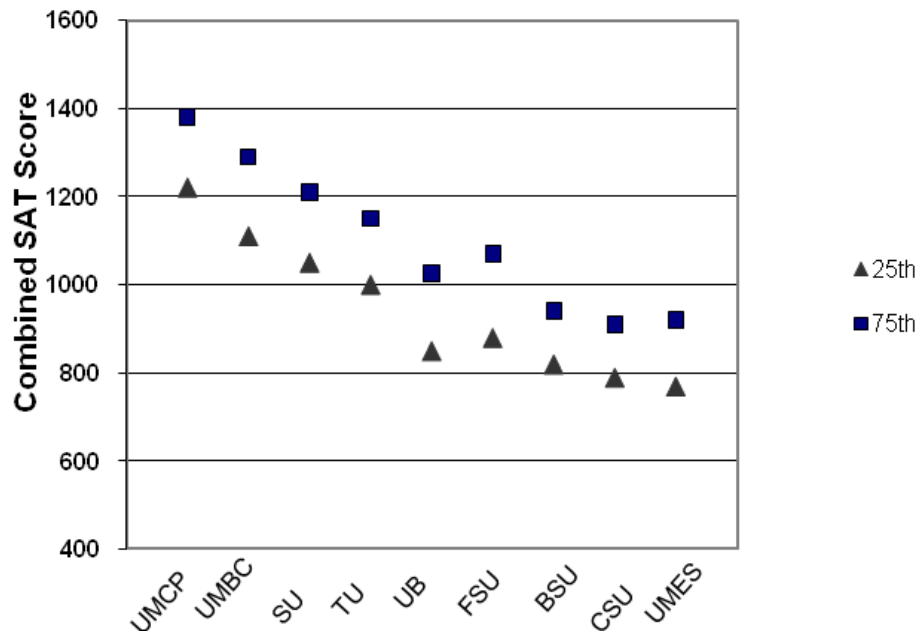


Table 2. Fall 2009 IPEDS SAT Quartiles for Public Institutions by Carnegie Classification***Public Research Universities (very high research activity)***

<u>Institution</u>	<u>Reading</u>	<u>Reading</u>	<u>Math</u>	<u>Math</u>
	<u>25th</u>	<u>75th</u>	<u>25th</u>	<u>75th</u>
Arizona State University	470	600	480	610
Florida State University	550	640	560	650
Indiana University-Bloomington	520	630	540	660
Louisiana State University and Agricultural & Mechanical College	520	630	550	650
Michigan State University	470	610	540	660
North Carolina State University at Raleigh	520	620	560	660
Ohio State University-Main Campus	540	650	580	690
Pennsylvania State University-Main Campus	530	630	570	670
Purdue University-Main Campus	500	610	540	670
Rutgers University-New Brunswick	520	630	550	670
Texas A & M University	520	630	560	670
The University of Tennessee	510	640	530	650
The University of Texas at Austin	530	660	570	690
University of Arizona	480	600	490	620
University of California-Berkeley	580	700	620	760
University of California-Davis	500	630	550	670
University of California-Irvine	510	610	560	670
University of California-Los Angeles	560	680	590	720
University of California-San Diego	540	660	600	710
University of Colorado at Boulder	530	630	550	650
University of Florida	560	670	580	690
University of Georgia	560	660	570	660
University of Illinois at Urbana-Champaign	540	660	660	770
University of Iowa	500	640	560	690
University of Maryland-College Park	580	680	620	710
University of Michigan-Ann Arbor	590	690	640	740
University of Minnesota-Twin Cities	520	670	600	710
University of Missouri-Columbia	530	650	530	650
University of North Carolina at Chapel Hill	590	690	620	700
University of Pittsburgh-Pittsburgh Campus	570	680	590	680
University of South Florida-Main Campus	520	620	530	640
University of Virginia--Main Campus	600	710	630	730
University of Washington-Seattle Campus	530	650	570	680
University of Wisconsin-Madison	550	670	620	730
Virginia Polytechnic Institute and State University	540	640	570	670

Note: The institutions displayed are listed alphabetically and are intended to be used for comparison purposes only. They represent only a sample group of national public institutions within a particular Carnegie classification. The list, which was compiled using an IPEDS-based sorting system, is not an exhaustive list of all national public institutions in each category and may not include all of the official peers for each USM institution.

Table 2. Fall 2009 IPEDS SAT Quartiles for Public Institutions by Carnegie Classification***Public Research Universities (high research activity)***

<u>Institution</u>	<u>Reading</u>	<u>Reading</u>	<u>Math</u>	<u>Math</u>
	<u>25%</u>	<u>75%</u>	<u>25%</u>	<u>75%</u>
College of William and Mary	620	730	620	720
Colorado School of Mines	550	650	610	700
Michigan Technological University	530	650	570	700
Missouri University of Science and Technology	550	670	610	700
New Jersey Institute of Technology	480	580	540	650
New Mexico State University-Main Campus	420	540	430	550
North Carolina A & T State University	400	500	410	510
North Dakota State University-Main Campus	470	610	490	650
Rutgers University-Newark	460	560	500	610
SUNY at Binghamton	580	660	610	690
SUNY College of Environmental Science and Forestry	530	620	540	640
The University of Montana	490	610	480	590
The University of Texas at El Paso	390	500	400	520
University of Alabama in Huntsville	500	630	520	640
University of Alaska Fairbanks	450	600	430	590
University of Idaho	480	600	490	610
University of Maine	480	590	480	600
University of Maryland-Baltimore County	530	630	550	660
University of Mississippi Main Campus	460	580	460	600
University of Missouri-Kansas City	520	650	520	650
University of Missouri-St Louis			500	660
University of Nevada-Reno	465	580	470	600
University of New Hampshire-Main Campus	510	610	520	630
University of New Orleans	470	600	488	632
University of North Carolina at Greensboro	460	560	470	570
University of Rhode Island	470	560	480	580
University of Southern Mississippi	460	560	450	565
University of Vermont	540	640	550	640
University of Wyoming	470	610	500	640
Utah State University	470	600	470	610
Wichita State University	470	600	500	623

Note: The institutions displayed are listed alphabetically and are intended to be used for comparison purposes only. They represent only a sample group of national public institutions within a particular Carnegie classification. The list, which was compiled using an IPEDS-based sorting system, is not an exhaustive list of all national public institutions in each category and may not include all of the official peers for each USM institution.

Table 2. Fall 2009 IPEDS SAT Quartiles for Public Institutions by Carnegie Classification***Public Master's Colleges and Universities (larger programs)***

<u>Institution</u>	<u>Reading</u>	<u>Reading</u>	<u>Math</u>	<u>Math</u>
	<u>25%</u>	<u>75%</u>	<u>25%</u>	<u>75%</u>
Appalachian State University	530	620	550	630
Boise State University	460	570	470	590
California Polytechnic State University-San Luis Obispo	530	630	570	680
California State Polytechnic University-Pomona	440	560	480	610
California State University-Chico	450	550	460	570
California State University-Fresno	400	510	410	540
California State University-Fullerton	430	530	450	560
California State University-Long Beach	440	550	460	580
California State University-Los Angeles	370	470	370	490
California State University-Northridge	400	520	400	530
California State University-Sacramento	410	520	420	550
California State University-San Bernardino	390	500	400	510
CUNY Bernard M Baruch College	490	600	550	660
CUNY Hunter College	480	580	510	610
CUNY Queens College	470	560	500	590
Eastern Michigan University	450	570	450	580
Frostburg State University	430	530	430	530
Grand Valley State University	490	610	520	640
James Madison University	520	620	540	630
Kennesaw State University	500	570	500	580
Middle Tennessee State University	450	580	460	580
Montclair State University	440	540	460	550
Salisbury University	520	600	520	620
Sam Houston State University	440	540	460	550
San Francisco State University	440	570	450	570
San Jose State University	430	540	450	580
Texas State University-San Marcos	480	570	490	590
The University of Texas at San Antonio	450	560	465	580
The University of Texas-Pan American	410	510	420	530
Towson University	490	580	493	590
University of Baltimore	420	540	410	540
Western Kentucky University	420	550	440	560

Note: The institutions displayed are listed alphabetically and are intended to be used for comparison purposes only. They represent only a sample group of national public institutions within a particular Carnegie classification. The list, which was compiled using an IPEDS-based sorting system, is not an exhaustive list of all national public institutions in each category and may not include all of the official peers for each USM institution.

Table 2. Fall 2009 IPEDS SAT Quartiles for Public Institutions by Carnegie Classification

Public Historically Black Master's Colleges and Universities (larger, medium, and smaller programs)

<u>Institution</u>	<u>Reading</u>	<u>Reading</u>	<u>Math</u>	<u>Math</u>
	<u>25%</u>	<u>75%</u>	<u>25%</u>	<u>75%</u>
Alabama A & M University	400	470	380	470
Alabama State University	360	440	360	450
Albany State University	410	480	400	470
Alcorn State University	390	470	400	460
Bowie State University	400	480	390	470
Coppin State University	400	470	380	460
Delaware State University	400	480	390	480
Fayetteville State University	380	460	400	470
Fort Valley State University	365	541	369	480
Grambling State University	380	470	380	480
Lincoln University of Pennsylvania	370	450	360	440
Norfolk State University	380	460	380	460
North Carolina Central University	380	460	380	470
Prairie View A & M University	360	450	370	460
Southern University and A & M College			383	508
Texas Southern University	320	430	330	430
University of Maryland Eastern Shore	380	470	370	460
Virginia State University	380	460	380	460

Note: The institutions displayed are listed alphabetically and are intended to be used for comparison purposes only. They represent only a sample group of national public institutions within a particular Carnegie classification. The list, which was compiled using an IPEDS-based sorting system, is not an exhaustive list of all national public institutions in each category and may not include all of the official peers for each USM institution.