



TOPIC: Retention and Graduation Rates of First-Time, Full-Time, Degree-Seeking Undergraduates

COMMITTEE: Education Policy

DATE OF COMMITTEE MEETING: June 1, 2011

SUMMARY: This report provides an overview of retention and graduation patterns of first-time, full-time, degree-seeking students systemwide and at the individual institutions. First-time, full-time freshmen are the traditional group of students tracked by MHEC and the federal government for accountability purposes. Retention and graduation rates for all students and African-American students are provided for the USM as well as by institution. Retention and graduation rates for Hispanic students and Pell Grant first-time, full-time, degree-seeking students are provided at the System level only.

Overall, USM institutions are enrolling, retaining and graduating more students. African-American freshman enrollment at USM institutions has increased 17 percent since fall 2000. The 2009 cohort second-year retention gap between African-American students and all students increased two points to 9%. The 2004 cohort six-year graduation rate gap was 22 percentage points, which was a 3% decrease from last year as the African-American 2004 cohort increased graduation rates by two points while the overall 2004 cohort decreased by one point.

Approximately 20 percent of the freshmen class received a Pell Grant to support their first year of college. Overall, there is a four percentage point gap in second year retention rates and a 15 percentage point gap in six-year graduation rates between Pell Grant recipients and all students.

ALTERNATIVE(S): This report is for information only.

FISCAL IMPACT: This report is for information only.

CHANCELLOR'S RECOMMENDATION: This report is for information only.

COMMITTEE RECOMMENDATION: Received as information. DATE: June 1, 2011

BOARD ACTION: DATE:

SUBMITTED BY: Joseph F. Vivona (301) 445-1923 jvivona@usmd.edu



RETENTION AND GRADUATION RATES OF FIRST-TIME FULL-TIME DEGREE- SEEKING UNDERGRADUATES

Bowie State University (BSU)

Coppin State University (CSU)

Frostburg State University (FSU)

Salisbury University (SU)

Towson University (TU)

University of Maryland, Baltimore County (UMBC)

University of Maryland, College Park (UMCP)

University of Maryland, Eastern Shore (UMES)

**Office of the Chief Operating Officer and
Vice Chancellor for Administration and Finance
University System of Maryland Office**

June 2011

Retention and Graduation Rates of First-Time Full-Time Degree-Seeking Undergraduates

Background:

This report includes graduation and retention rates for all first-time, full-time, degree-seeking freshmen who enrolled at the following University System of Maryland (USM) institutions: Bowie State University (BSU); Coppin State University (CSU); Frostburg State University (FSU); Salisbury University (SU); Towson University (TU); University of Maryland, Baltimore County (UMBC); University of Maryland, College Park (UMCP); and University of Maryland Eastern Shore (UMES). The University of Baltimore (UB) admitted its first freshmen class in fall 2007 and is included in the System cohort beginning that year. For the first time, UB campus retention is included, with three years of retention data now available. The University of Maryland, Baltimore and University of Maryland University College are not included in this report due to their unique institutional missions.

Retention and graduation rates are reported for those students re-enrolling at or graduating from any USM institution and for USM students re-enrolling at or graduating from their institution of initial entry. This report does not reflect changes to the student cohorts from eligible exclusions and student ID changes. The rates do not account for students who may have transferred or graduated from an institution outside USM.

This report provides data on freshmen who entered USM institutions in the fall semesters 1989 to 2009. Second-, third-, and fourth-year retention rates as well as four-, five-, and six-year graduation rates are reported for the following groups: all USM students, USM African-American students, USM Hispanic students, and USM Pell-Grant recipients. A set of tables in the Appendix shows the rates for the USM as a whole and for each institution separately.

This analysis was prepared by combining data collected each fall semester on students who are enrolled at USM institutions with data collected each year on degrees and financial aid awarded. The USM, in conjunction with the Maryland Higher Education Commission, collects these data through the Enrollment Information System, Degree Information System, and Financial Aid Information System files submitted by each USM institution. For further information, please contact Chad Muntz, cmuntz@usmd.edu (301-445-2737).

Trends in Retention and Graduation Rates:

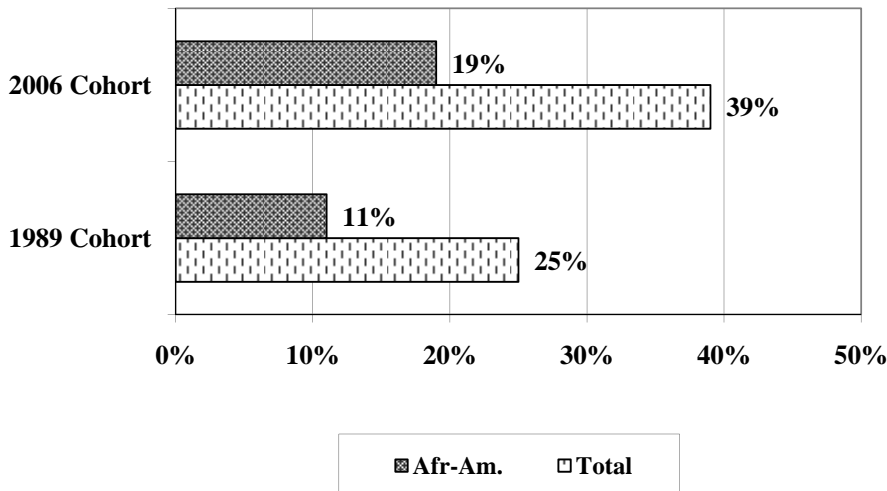
Second-Year Retention Rate. The second-year retention rate of USM freshmen (at institution of first entry) increased slightly by one percent to 83 percent overall for the fall 2009 cohort. This overall rate masks, however, the variation in second-year retention rates that exists across USM institutions. Institutions with rates below 83 percent included Bowie (71%), Coppin (61%), UMES (64%), Frostburg (74%), Salisbury (80%), and UB (76%). UMBC, Towson, and UMCP, in contrast, had above average rates of students returning to their institutions for their second fall semester (83%, 84% and 95% respectively).

Looked at by population, the second-year retention rate of African-American USM freshmen fell one percent to 74 percent for 2009 (four percentage points below the average for all students), while the rate for USM Hispanic students increased by four percent to 86 percent (two percentage points higher than the USM average for all students), and the rate for USM Pell-grant recipients remained steady at 78 percent (five percentage points below the average for all USM students).

Retention and Graduation Rates of First-Time Full-Time Degree-Seeking Undergraduates

Four-Year Graduation Rate. The four-year graduation rate for all first-time, full-time USM freshmen dipped slightly this year to 39 percent for the 2006 cohort. This bucked the gradual but steady trend of improved four-year graduation rates that had been occurring since the late 1980s (moving USM from a 25 percent rate in 1989 to a high of 41 percent last year). As with the second-year retention rate, however, this overall rate masks significant variation across institutions and student populations. The four-year graduation rate for African-American freshmen, for instance, was 20 percent, a rate that has not changed over the past two years, while the four-year graduation rate for Pell-grant recipients was 17 percent (2005 cohort). In contrast, Hispanic students had a four-year graduation rate of 41 percent, which exceeds the 39 percent rate for all USM students.

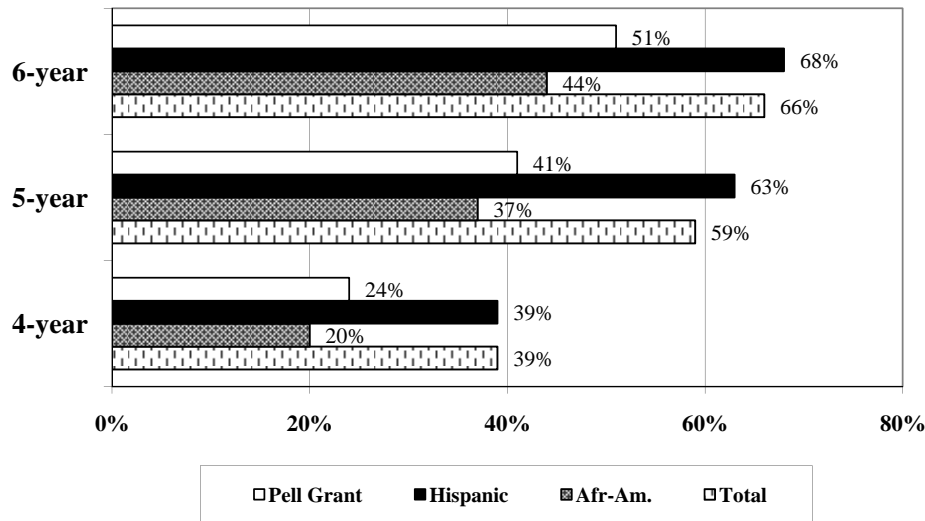
Figure 1
University System of Maryland
Four-Year Graduation Rates
Total and African-American 1989 and 2006 Cohorts



Six-Year Graduation Rate. An additional 27 percent of all first-time, full-time freshmen go on to graduate between five and six years after first starting at a USM institution, making the six-year graduation rate 66 percent for all USM students (for comparison purposes, the national standard used to measure progress in the USM Dashboard indicators is 55 percent). Again, however, the overall rate masks significant differences between student populations. The six-year graduation rate for first-time, full-time USM African-American students was 44 percent, while the rate for first-time, full-time Hispanic students was 68 percent, and was 51 percent for first-time, full-time Pell-grant recipients (based on the 2003 cohort). Figure 2 below provides the summary four-, five-, and six- year rates for USM students by population. The data in the chart also make it clear that a significant gap continues to exist between the six-year graduation rates of African-Americans and all students. While it is noteworthy that the gap this year shrank from 25 percentage points (for the 2003 cohort) to 22 percentage points (for the 2006 cohort), it was still wider than the 15 percentage points for the 1999 cohort, used as the base point for the initiative. This will be discussed in more detail in the section that follows.

Retention and Graduation Rates of First-Time Full-Time Degree-Seeking Undergraduates

Figure 2
University System of Maryland
Four-, Five- and Six-Year Graduation Rates
Total, African-American and Pell Grant 2004 Cohort



Closing the Achievement Gap:

Chancellor Kirwan and the Board of Regents have set as an aspirational goal the elimination, by the year 2020, of any academic success rate gaps that exist within the USM based on race, gender, entry status or income. Beginning with the fall 2008 entering class, the USM institutions prepared campus-based strategies designed to move toward that goal. The USM anticipates that these institution-centric efforts over time will have a combined effect of closing any race and income achievement gaps systemwide. As a step toward fulfilling that expectation, the Board of Regents and the Chancellor established a systemwide goal of cutting such achievement gaps in half by the year 2015, with the 2015 graduation rate to be based on the cohort of students who entered USM institutions in the fall of 2009. The information provided below is designed to serve as baseline data necessary to help assess progress towards the 2015 goal. It looks at data for two specific population groups—African American and low-income—whose success is critical to elimination of the achievement gap and the System’s progress toward its strategic plan goals. It is important to note that since 2008, campuses have created detailed plans with year-by-year goals for closing the achievement gap. Those plans may identify and seek to address the needs of other student population groups as well.

Access for African-American Students – First-Time, Full-Time Cohort. Between 2000 and 2009, the number of USM first-time, full-time, degree-seeking students increased 17 percent with African-American students making up over half of that growth (51 percent). Historically Black Institutions (HBIs) enrolled the majority of African-American first-time, full-time freshmen in 2009 (56 percent), down from 59 percent in 2000. African-American enrollment at the Traditionally White institutions (TWIs) increased 48 percent during this time compared to 36 percent at the HBIs (See Table 1).

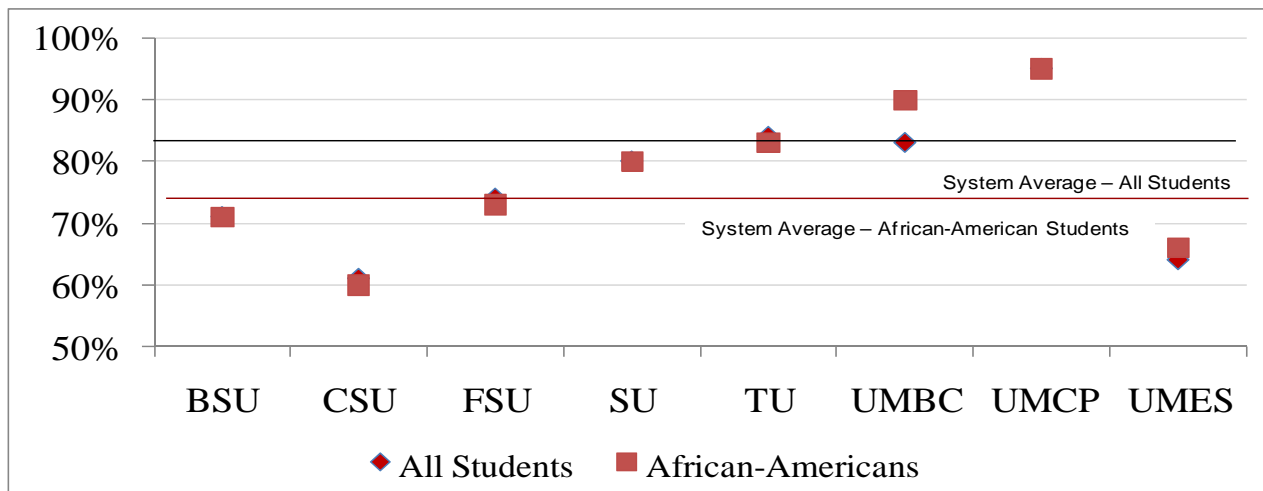
Retention and Graduation Rates of First-Time Full-Time Degree-Seeking Undergraduates

Table 1
**First-Time, Full-Time, Degree-Seeking Students
 2000 and 2009 Cohorts**

	All Students			African-American Students		
	2000	2009	2000-2009 % Change	2000	2009	2000-2009 % Change
BSU	361	635	76%	337	591	75%
CSU	417	541	30%	396	501	27%
FSU	1,028	1,028	0%	152	329	116%
SU	940	1,275	36%	32	132	313%
TU	1,981	2,397	21%	148	293	98%
UMBC	1,307	1,524	17%	166	226	36%
UMCP	3,952	4,193	6%	476	385	-19%
UMES	780	876	12%	670	787	17%
USM	10,766	12,643	17%	2,377	3,337	40%

Success of African-American Students in Closing Achievement Gap- Second-Year Retention Rate. The gap between the second-year retention rate for all USM students and the second-year retention rate for all USM African-American students increased to nine percentage points for the first time since the 2002 cohort. Much of this gap is explained by the fact that HBIs enroll over half of the African-American first-time, full-time freshmen and have retention rates that are lower than the overall System average for these students. In fact, with the exception of Frostburg, the second-year retention of African-American students at TWIs exceeds that for all USM African American students (See Figure 3). In order to begin to close the achievement gap systemwide, HBIs must increase their second-year retention rates.

Figure 3
**Second Year Retention Rates
 Fall 2009 Cohort**



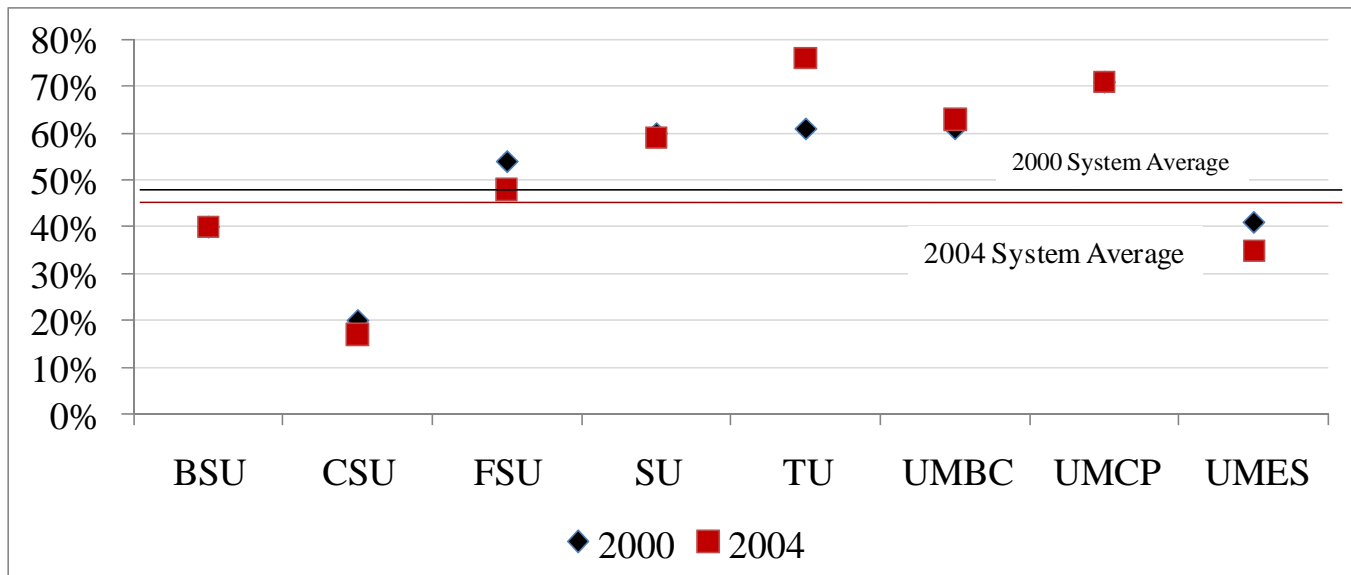
Note: Retention at institution of first entry

Retention and Graduation Rates of First-Time Full-Time Degree-Seeking Undergraduates

Success of African-American Students in Closing Achievement Gap - Six-Year Graduation Rate.

The gap between the six-year graduation rate for all USM students and all USM African-American students increased from 18 percentage points for the 2000 cohort to 22 percentage points for the 2004 cohort. This was partially due to a drop in the USM’s six-year graduation rate for African-Americans – from 46 percent (2000 cohort) to 44 percent (2004 cohort) – during a time when overall graduation rates were increasing. Figure 4 below shows the graduation rate of African-American students by institution for these two cohorts. To close the achievement gap, sustained systemwide progress needs to be made in supporting African-American student baccalaureate attainment across the System and at the HBIs in particular.

Figure 4
Six Year Graduation Rates of African-American Students
Fall 2000 and 2004 Cohorts



Note: Graduation at any USM institution

Success of Low Income Students in Closing Achievement Gap – Second-Year Retention and Six-Year Graduation Rates. The second-year retention rate for USM’s low income students is four percentage points less (78%) than that of all 2008 first-time students (82%) at the institution, and this retention gap is unchanged from the fall 2007 first-time, full-time students. Systemwide, the second-year retention rate for low income students had a high of 79% in (1999 & 2000) and a low of 75% (2005). The six-year graduation rate of low income students dropped from 54 percent to 51 percent between the 1999 and 2004 cohorts. Meanwhile, the entire first-time, full-time freshmen cohort graduation rate increased leading to a graduation gap also increase from 1999 to 2004. Although the low income gap is not as large as other subgroup gaps, sustained system progress needs to be continued to close this gap.

APPENDIX

Table 1a
University System of Maryland
Retention and Graduation Rates
First-Time, Full-Time, Degree-Seeking Freshmen Entering in the Fall Semester

Cohort Year	Cohort Size	Institution of First-Time Entry							Anywhere in the USM						
		Retention Rates			Graduation Rates			Enrolled 7th Year	Retention Rates			Graduation Rates			Enrolled 7th Year
2nd Yr	3rd Yr	4th Yr	4-year	5-year	6-year	2nd Yr	3rd Yr		4th Yr	4-year	5-year	6-year			
1989	8,227	81%	70%	65%	24%	49%	56%	5%	84%	75%	71%	25%	52%	61%	8%
1990	8,292	80%	68%	62%	23%	46%	53%	5%	82%	73%	69%	24%	50%	58%	7%
1991	7,986	79%	67%	62%	24%	47%	53%	4%	81%	71%	68%	25%	50%	58%	6%
1992	8,058	81%	69%	63%	25%	48%	55%	4%	82%	73%	68%	26%	51%	59%	7%
1993	8,263	79%	67%	62%	25%	48%	54%	4%	82%	72%	68%	26%	51%	59%	6%
1994	8,797	79%	67%	62%	27%	50%	56%	4%	81%	72%	68%	28%	53%	60%	6%
1995	9,226	81%	69%	64%	30%	52%	57%	4%	84%	74%	71%	31%	55%	62%	7%
1996	9,615	81%	70%	65%	30%	52%	58%	3%	83%	75%	71%	31%	55%	62%	6%
1997	10,040	82%	71%	67%	33%	56%	61%	3%	84%	76%	73%	34%	58%	65%	6%
1998	10,589	83%	72%	67%	33%	56%	62%	2%	85%	76%	73%	34%	59%	66%	3%
1999	10,521	83%	73%	68%	35%	56%	61%	2%	85%	77%	74%	36%	59%	65%	3%
2000	10,766	82%	73%	68%	34%	55%	60%	3%	85%	78%	74%	35%	58%	64%	4%
2001	11,796	83%	73%	68%	36%	55%	61%	2%	86%	78%	74%	37%	58%	64%	4%
2002	11,421	82%	72%	68%	38%	57%	62%	2%	85%	77%	74%	40%	61%	66%	4%
2003	11,518	82%	73%	68%	39%	58%	62%	3%	85%	78%	75%	41%	62%	67%	4%
2004	11,736	82%	72%	68%	36%	55%	62%	3%	85%	78%	74%	40%	61%	66%	5%
2005	12,379	81%	70%	65%	39%	56%			83%	75%	71%	41%	59%		
2006	12,479	81%	71%	67%	37%				83%	75%	71%	39%			
2007	12,893	82%	72%	68%					85%	74%	73%				
2008	12,945	82%	72%						82%	76%					
2009	12,643	83%							85%						

Note: University of Baltimore enrolled its first freshmen class in fall 2007.

Source: EIS and DIS files.

Table 1b
University System of Maryland
Retention and Graduation Rates of African-Americans
First-Time, Full-Time, Degree-Seeking Freshmen Entering in the Fall Semester

Cohort Year	Cohort Size	Institution of First-Time Entry							Anywhere in the USM						
		Retention Rates			Graduation Rates			Enrolled 7th Year	Retention Rates			Graduation Rates			Enrolled 7th Year
2nd Yr	3rd Yr	4th Yr	4-year	5-year	6-year	2nd Yr	3rd Yr		4th Yr	4-year	5-year	6-year			
1989	1,895	75%	61%	53%	11%	30%	37%	7%	78%	65%	59%	11%	32%	40%	10%
1990	1,970	75%	60%	53%	11%	29%	37%	6%	76%	64%	57%	12%	31%	40%	9%
1991	1,863	75%	60%	54%	14%	32%	38%	4%	76%	63%	59%	14%	33%	41%	8%
1992	1,767	76%	61%	53%	13%	31%	37%	6%	78%	64%	57%	14%	32%	40%	9%
1993	2,033	75%	58%	51%	14%	30%	37%	5%	76%	62%	56%	15%	32%	40%	8%
1994	2,285	74%	60%	54%	16%	34%	42%	5%	76%	65%	60%	17%	36%	45%	8%
1995	2,393	79%	62%	55%	17%	34%	41%	6%	81%	67%	62%	17%	37%	45%	9%
1996	2,409	77%	63%	55%	17%	36%	43%	5%	79%	68%	62%	18%	38%	46%	8%
1997	2,305	79%	65%	58%	19%	37%	44%	5%	81%	71%	66%	20%	40%	49%	8%
1998	2,393	77%	62%	56%	18%	36%	43%	3%	79%	68%	63%	19%	39%	47%	5%
1999	2,276	79%	66%	59%	22%	40%	46%	2%	82%	72%	66%	23%	43%	50%	4%
2000	2,377	76%	63%	56%	18%	36%	42%	4%	79%	69%	63%	19%	39%	46%	7%
2001	2,988	76%	61%	53%	19%	35%	40%	4%	79%	68%	61%	20%	38%	44%	7%
2002	2,747	75%	61%	54%	20%	33%	37%	4%	77%	67%	61%	21%	35%	40%	6%
2003	3,106	75%	62%	54%	20%	34%	39%	4%	78%	68%	61%	21%	35%	42%	6%
2004	2,933	74%	60%	53%	19%	34%	40%	5%	76%	65%	59%	20%	37%	44%	8%
2005	3,612	74%	57%	51%	20%	36%			75%	62%	57%	21%	38%		
2006	3,619	74%	60%	54%	19%				76%	65%	59%	19%			
2007	3,406	75%	60%	55%					77%	63%	60%				
2008	3,567	75%	60%						75%	65%					
2009	3,337	74%							76%						

Note: University of Baltimore enrolled its first freshmen class in fall 2007.

Source: EIS and DIS files.

Table 1c
University System of Maryland
Retention and Graduation Rates of Hispanics
First-Time, Full-Time, Degree-Seeking Freshmen Entering in the Fall Semester

Cohort Year	Cohort Size	Institution of First-Time Entry							Anywhere in the USM						
		Retention Rates			Graduation Rates			Enrolled 7th Year	Retention Rates			Graduation Rates			Enrolled 7th Year
2nd Yr	3rd Yr	4th Yr	4-year	5-year	6-year	2nd Yr	3rd Yr		4th Yr	4-year	5-year	6-year			
1989	156	83%	72%	60%	17%	40%	50%	4%	85%	76%	70%	19%	44%	55%	6%
1998	304	84%	69%	65%	28%	52%	59%	5%	87%	74%	71%	29%	55%	63%	6%
1999	321	81%	68%	67%	29%	52%	59%	2%	84%	73%	72%	30%	55%	63%	4%
2000	295	86%	77%	73%	33%	60%	67%	2%	88%	80%	77%	33%	61%	70%	5%
2001	338	84%	73%	71%	28%	57%	63%	1%	85%	77%	76%	28%	59%	66%	4%
2002	325	86%	76%	74%	37%	60%	67%	3%	88%	80%	80%	38%	63%	71%	3%
2003	380	87%	75%	71%	38%	58%	64%	2%	87%	80%	76%	40%	62%	69%	4%
2004	357	85%	77%	74%	39%	61%	65%	4%	88%	81%	78%	39%	63%	68%	6%
2005	421	79%	70%	65%	36%	56%			80%	73%	69%	37%	57%		
2006	478	82%	72%	70%	39%				84%	75%	73%	41%			
2007	468	85%	75%	73%					87%	76%	77%				
2008	515	82%	73%						82%	77%					
2009	521	86%							87%						

Note: University of Baltimore enrolled its first freshmen class in fall 2007.

Source: EIS and DIS files.

Table 1d
University System of Maryland
Retention and Graduation Rates of First-Time, Full-time, Degree-Seeking Freshmen
Pell-Grant Recipients and All Students Entering in the Fall Semester

Cohort Year	Cohort Size	Institution of First-Time Entry							Anywhere in the USM						
		Retention Rates			Graduation Rates			Enrolled 7th Year	Retention Rates			Graduation Rates			Enrolled 7th Year
2nd Yr	3rd Yr	4th Yr	4-year	5-year	6-year	2nd Yr	3rd Yr		4th Yr	4-year	5-year	6-year			
First-Time, Full-Time Pell Grant Recipients															
1999	2,134	79%	66%	60%	24%	43%	49%	2%	83%	72%	67%	25%	46%	54%	4%
2000	2,018	79%	68%	61%	23%	43%	50%	4%	83%	74%	69%	24%	46%	55%	7%
2001	2,560	78%	64%	58%	22%	40%	46%	3%	84%	73%	67%	24%	44%	52%	6%
2002	2,450	76%	63%	56%	22%	40%	45%	4%	81%	70%	65%	24%	45%	51%	6%
2003	2,524	77%	64%	57%	23%	41%	46%	4%	81%	71%	65%	25%	45%	51%	6%
2004	2,336	76%	64%	56%	22%	38%	46%	5%	80%	71%	64%	24%	41%	51%	8%
2005	2,482	75%	59%	53%	22%	39%			80%	66%	60%	24%	42%		
2006	2,581	76%	63%	58%	23%				79%	68%	63%	24%			
2007	2,679	78%	63%	57%					81%	66%	63%				
2008	2,733	78%	64%						80%	69%					
All First-Time Full-Time															
1999	10,521	83%	73%	68%	35%	56%	61%	2%	85%	77%	74%	36%	59%	65%	3%
2000	10,766	82%	73%	68%	34%	55%	60%	3%	85%	78%	74%	35%	58%	64%	4%
2001	11,796	83%	73%	68%	36%	55%	61%	2%	86%	78%	74%	37%	58%	64%	4%
2002	11,421	82%	72%	68%	38%	57%	62%	2%	85%	77%	74%	40%	61%	66%	4%
2003	11,518	82%	73%	68%	39%	58%	62%	3%	85%	78%	75%	41%	62%	67%	4%
2004	11,736	82%	72%	68%	36%	55%	62%	3%	85%	78%	74%	40%	61%	66%	5%
2005	12,379	81%	70%	65%	39%	56%			83%	75%	71%	41%	59%		
2006	12,479	81%	71%	67%	37%				83%	75%	71%	39%			
2007	12,893	82%	72%	68%					85%	74%	73%				
2008	12,945	82%	72%						82%	76%					

Source: EIS, FAIS and DIS files.

Table 2a
Bowie State University
Retention and Graduation Rates
First-Time, Full-Time, Degree-Seeking Freshmen Entering in the Fall Semester

Cohort Year	Cohort Size	Institution of First-Time Entry							Anywhere in the USM						
		Retention Rates			Graduation Rates			Enrolled 7th Year	Retention Rates			Graduation Rates			Enrolled 7th Year
2nd Yr	3rd Yr	4th Yr	4-year	5-year	6-year	2nd Yr	3rd Yr		4th Yr	4-year	5-year	6-year			
1990	374	69%	55%	45%	7%	25%	32%	7%	71%	59%	51%	7%	27%	35%	11%
1991	318	75%	61%	53%	13%	31%	39%	6%	76%	64%	56%	13%	32%	41%	8%
1992	342	75%	62%	55%	11%	29%	39%	8%	76%	64%	57%	12%	30%	40%	10%
1993	264	67%	54%	48%	14%	28%	36%	6%	69%	57%	52%	14%	30%	38%	8%
1994	383	73%	60%	54%	15%	33%	41%	8%	75%	63%	58%	15%	34%	43%	10%
1995	435	74%	59%	53%	14%	32%	39%	8%	76%	63%	56%	15%	34%	42%	11%
1996	301	71%	59%	53%	14%	33%	38%	8%	72%	61%	56%	14%	33%	39%	9%
1997	357	71%	61%	51%	12%	30%	38%	8%	75%	65%	55%	13%	31%	40%	10%
1998	418	73%	55%	51%	12%	29%	36%	5%	76%	61%	56%	13%	31%	40%	6%
1999	343	71%	58%	48%	13%	30%	37%	2%	74%	64%	55%	15%	33%	41%	3%
2000	361	73%	61%	52%	12%	28%	35%	7%	75%	66%	57%	12%	29%	38%	11%
2001	594	75%	58%	52%	14%	28%	36%	7%	77%	64%	58%	14%	30%	38%	11%
2002	566	70%	60%	55%	17%	35%	40%	6%	73%	64%	61%	18%	37%	43%	8%
2003	762	73%	60%	51%	13%	32%	40%	4%	76%	65%	56%	14%	34%	42%	6%
2004	627	77%	60%	53%	15%	31%	38%	9%	78%	65%	58%	15%	32%	40%	11%
2005	923	71%	56%	45%	22%	35%			74%	60%	50%	23%	37%		
2006	765	71%	54%	49%	11%				72%	58%	52%	11%			
2007	820	69%	57%	47%					72%	60%	53%				
2008	664	69%	54%						70%	59%					
2009	635	71%							72%						

Source: EIS and DIS files.

Table 2b
Bowie State University
Retention and Graduation Rates of African-Americans
First-Time, Full-Time, Degree-Seeking Freshmen Entering in the Fall Semester

Cohort Year	Cohort Size	Institution of First-Time Entry							Anywhere in the USM						
		Retention Rates			Graduation Rates			Enrolled 7th Year	Retention Rates			Graduation Rates			Enrolled 7th Year
2nd Yr	3rd Yr	4th Yr	4-year	5-year	6-year	2nd Yr	3rd Yr		4th Yr	4-year	5-year	6-year			
1990	346	70%	56%	47%	8%	27%	34%	7%	72%	60%	51%	8%	28%	37%	10%
1991	287	76%	62%	55%	12%	31%	39%	7%	77%	64%	57%	12%	31%	40%	9%
1992	321	76%	63%	56%	11%	30%	40%	8%	77%	65%	58%	11%	30%	41%	10%
1993	248	67%	54%	48%	13%	27%	35%	6%	69%	58%	52%	13%	29%	37%	8%
1994	354	75%	62%	56%	17%	34%	43%	9%	76%	64%	59%	17%	35%	44%	10%
1995	393	75%	60%	53%	14%	33%	40%	7%	77%	63%	56%	15%	35%	42%	11%
1996	267	70%	58%	54%	14%	33%	38%	8%	71%	59%	55%	14%	33%	39%	10%
1997	325	72%	61%	51%	12%	30%	38%	8%	74%	64%	55%	13%	30%	39%	10%
1998	379	75%	56%	53%	12%	30%	38%	6%	77%	62%	58%	13%	32%	42%	7%
1999	302	73%	62%	51%	13%	31%	39%	2%	75%	66%	56%	12%	31%	40%	3%
2000	337	74%	63%	53%	12%	29%	36%	7%	76%	66%	58%	12%	30%	39%	10%
2001	560	76%	59%	53%	13%	28%	36%	8%	78%	64%	59%	13%	30%	38%	11%
2002	517	71%	61%	56%	16%	35%	41%	6%	73%	65%	62%	17%	37%	44%	9%
2003	711	74%	62%	52%	13%	33%	40%	4%	78%	66%	57%	13%	35%	42%	5%
2004	577	78%	61%	53%	15%	30%	37%	9%	79%	66%	58%	15%	32%	40%	12%
2005	858	72%	56%	45%	21%	35%			74%	60%	50%	22%	37%		
2006	717	72%	54%	49%	11%				73%	58%	52%	12%			
2007	762	70%	57%	47%					72%	59%	52%				
2008	610	70%	54%						70%	59%					
2009	591	71%							72%						

Source: EIS and DIS files.

Table 3a
Coppin State University
Retention and Graduation Rates
First-Time, Full-Time, Degree-Seeking Freshmen Entering in the Fall Semester

Cohort Year	Cohort Size	Institution of First-Time Entry							Anywhere in the USM						
		Retention Rates			Graduation Rates			Enrolled 7th Year	Retention Rates			Graduation Rates			Enrolled 7th Year
2nd Yr	3rd Yr	4th Yr	4-year	5-year	6-year	2nd Yr	3rd Yr		4th Yr	4-year	5-year	6-year			
1990	331	65%	50%	42%	4%	16%	21%	10%	65%	50%	43%	4%	16%	22%	11%
1991	316	67%	54%	48%	10%	20%	26%	8%	68%	56%	50%	10%	20%	27%	11%
1992	354	72%	49%	40%	5%	15%	21%	10%	73%	50%	42%	5%	15%	21%	12%
1993	502	64%	41%	34%	5%	13%	17%	8%	65%	42%	36%	5%	13%	18%	10%
1994	384	65%	48%	42%	6%	15%	24%	10%	67%	50%	45%	6%	16%	25%	11%
1995	439	72%	55%	48%	7%	18%	26%	10%	73%	57%	52%	7%	18%	26%	13%
1996	513	70%	54%	46%	6%	18%	28%	10%	70%	57%	50%	6%	19%	29%	12%
1997	382	72%	53%	46%	4%	16%	22%	10%	73%	55%	48%	4%	17%	24%	11%
1998	457	72%	53%	44%	7%	18%	25%	5%	74%	54%	46%	7%	19%	26%	6%
1999	441	69%	50%	40%	9%	16%	20%	5%	71%	53%	44%	9%	18%	23%	6%
2000	417	71%	50%	40%	5%	12%	18%	7%	73%	53%	43%	5%	14%	21%	9%
2001	540	70%	46%	38%	6%	14%	18%	6%	72%	49%	41%	6%	15%	20%	8%
2002	578	69%	48%	37%	5%	13%	16%	6%	69%	50%	40%	5%	14%	17%	9%
2003	571	65%	49%	36%	4%	10%	13%	9%	67%	52%	39%	4%	12%	16%	10%
2004	588	63%	43%	35%	4%	10%	15%	9%	64%	46%	39%	4%	11%	17%	11%
2005	661	63%	39%	32%	4%	12%			65%	42%	36%	4%	13%		
2006	494	60%	42%	34%	5%				62%	45%	37%	5%			
2007	555	58%	37%	32%					59%	39%	34%				
2008	570	62%	42%						62%	44%					
2009	541	61%							62%						

Source: EIS and DIS files.

Table 3b
Coppin State University
Retention and Graduation Rates of African-Americans
First-Time, Full-Time, Degree-Seeking Freshmen Entering in the Fall Semester

Cohort Year	Cohort Size	Institution of First-Time Entry							Anywhere in the USM						
		Retention Rates			Graduation Rates			Enrolled 7th Year	Retention Rates			Graduation Rates			Enrolled 7th Year
2nd Yr	3rd Yr	4th Yr	4-year	5-year	6-year	2nd Yr	3rd Yr		4th Yr	4-year	5-year	6-year			
1990	305	67%	52%	44%	4%	16%	22%	11%	67%	53%	45%	4%	16%	23%	12%
1991	281	69%	56%	50%	10%	21%	27%	9%	70%	57%	52%	10%	21%	28%	12%
1992	330	73%	51%	41%	5%	16%	22%	11%	73%	52%	42%	5%	16%	22%	12%
1993	446	66%	44%	36%	5%	13%	19%	8%	67%	46%	38%	5%	14%	20%	10%
1994	364	66%	49%	44%	5%	15%	25%	10%	68%	51%	46%	5%	16%	26%	12%
1995	416	74%	56%	48%	7%	18%	26%	10%	75%	58%	53%	7%	18%	27%	13%
1996	492	70%	55%	47%	5%	18%	28%	10%	71%	57%	49%	5%	18%	29%	12%
1997	354	74%	55%	47%	4%	16%	22%	11%	75%	57%	50%	4%	17%	24%	12%
1998	439	72%	53%	44%	7%	18%	25%	5%	73%	54%	46%	7%	19%	26%	6%
1999	424	69%	49%	39%	8%	15%	19%	5%	71%	53%	44%	9%	18%	23%	7%
2000	396	71%	50%	39%	4%	12%	18%	7%	73%	54%	42%	4%	13%	20%	9%
2001	516	70%	46%	38%	6%	14%	19%	7%	72%	49%	42%	6%	16%	21%	9%
2002	561	69%	49%	38%	5%	14%	16%	6%	70%	51%	41%	5%	14%	17%	9%
2003	557	66%	49%	37%	4%	10%	13%	9%	67%	53%	40%	4%	12%	16%	10%
2004	567	64%	44%	35%	4%	10%	15%	9%	65%	47%	39%	4%	11%	17%	11%
2005	633	63%	39%	32%	4%	12%			66%	42%	36%	4%	13%		
2006	476	60%	44%	36%	5%				62%	46%	38%	5%			
2007	371	58%	35%	31%					60%	37%	34%				
2008	519	62%	42%						62%	44%					
2009	501	60%							62%						

Source: EIS and DIS files.

Table 4a
Frostburg State University
Retention and Graduation Rates
First-Time, Full-Time, Degree-Seeking Freshmen Entering in the Fall Semester

Cohort Year	Cohort Size	Institution of First-Time Entry							Anywhere in the USM						
		Retention Rates			Graduation Rates			Enrolled 7th Year	Retention Rates			Graduation Rates			Enrolled 7th Year
2nd Yr	3rd Yr	4th Yr	4-year	5-year	6-year	2nd Yr	3rd Yr		4th Yr	4-year	5-year	6-year			
1990	840	78%	65%	60%	25%	52%	56%	2%	82%	72%	71%	26%	57%	63%	5%
1991	771	73%	63%	58%	25%	48%	53%	2%	76%	69%	66%	26%	52%	60%	4%
1992	861	76%	61%	54%	28%	52%	54%	2%	79%	69%	65%	29%	57%	63%	4%
1993	921	71%	59%	55%	22%	45%	50%	2%	75%	67%	64%	23%	50%	57%	5%
1994	832	71%	60%	54%	24%	48%	52%	2%	76%	69%	65%	26%	55%	61%	5%
1995	929	72%	57%	51%	23%	44%	49%	2%	77%	68%	65%	25%	52%	60%	6%
1996	975	71%	57%	52%	20%	43%	47%	2%	75%	66%	63%	22%	51%	56%	5%
1997	865	73%	60%	57%	24%	48%	51%	3%	77%	68%	67%	26%	53%	58%	6%
1998	932	73%	59%	55%	20%	43%	49%	1%	77%	68%	66%	21%	49%	57%	3%
1999	932	74%	61%	55%	18%	41%	47%	1%	78%	70%	66%	20%	47%	56%	3%
2000	1,028	70%	58%	55%	19%	42%	47%	2%	75%	67%	65%	21%	47%	54%	5%
2001	923	76%	63%	57%	22%	46%	51%	1%	79%	71%	67%	23%	52%	59%	3%
2002	999	70%	59%	54%	23%	43%	48%	2%	75%	68%	66%	25%	50%	57%	4%
2003	988	74%	61%	56%	22%	45%	49%	2%	79%	71%	68%	24%	53%	60%	4%
2004	955	70%	58%	54%	22%	43%	48%	2%	75%	67%	64%	24%	50%	56%	6%
2005	928	72%	57%	54%	20%	41%			75%	63%	64%	21%	45%		
2006	1,011	68%	56%	52%	17%				72%	65%	60%	19%			
2007	1,057	74%	60%	54%					78%	65%	64%				
2008	1,030	72%	59%						72%	65%					
2009	1,028	74%							78%						

Source: EIS and DIS files.

Table 4b
Frostburg State University
Retention and Graduation Rates of African-Americans
First-Time, Full-Time, Degree-Seeking Freshmen Entering in the Fall Semester

Cohort Year	Cohort Size	Institution of First-Time Entry							Anywhere in the USM						
		Retention Rates			Graduation Rates			Enrolled 7th Year	Retention Rates			Graduation Rates			Enrolled 7th Year
2nd Yr	3rd Yr	4th Yr	4-year	5-year	6-year	2nd Yr	3rd Yr		4th Yr	4-year	5-year	6-year			
1990	106	79%	57%	55%	16%	42%	47%	0%	81%	67%	67%	16%	47%	55%	4%
1991	76	67%	55%	45%	11%	32%	41%	1%	71%	61%	61%	11%	33%	50%	9%
1992	65	78%	51%	35%	6%	26%	29%	2%	80%	60%	51%	6%	32%	42%	3%
1993	92	71%	55%	51%	9%	30%	43%	3%	74%	62%	62%	9%	32%	47%	8%
1994	78	60%	49%	47%	8%	26%	32%	1%	68%	59%	56%	8%	28%	37%	6%
1995	85	73%	46%	39%	5%	24%	28%	1%	76%	62%	59%	7%	34%	44%	9%
1996	120	69%	49%	47%	11%	32%	35%	3%	73%	58%	59%	12%	35%	40%	8%
1997	106	72%	58%	51%	14%	30%	39%	5%	77%	70%	68%	17%	36%	45%	7%
1998	154	71%	53%	48%	8%	26%	36%	1%	75%	64%	61%	9%	30%	46%	5%
1999	146	79%	66%	58%	16%	40%	46%	0%	83%	76%	72%	17%	44%	54%	3%
2000	152	78%	63%	61%	16%	40%	50%	2%	82%	71%	70%	17%	43%	54%	8%
2001	116	75%	56%	48%	12%	33%	40%	0%	80%	70%	61%	12%	39%	48%	3%
2002	128	66%	53%	47%	16%	34%	40%	2%	72%	66%	62%	17%	41%	49%	5%
2003	128	78%	64%	55%	20%	38%	45%	3%	81%	74%	69%	20%	40%	51%	6%
2004	151	73%	63%	58%	12%	32%	42%	3%	77%	72%	66%	13%	37%	48%	7%
2005	186	76%	56%	54%	10%	37%			79%	61%	63%	10%	38%		
2006	215	74%	56%	52%	11%				77%	66%	59%	12%			
2007	289	78%	60%	52%					81%	65%	65%				
2008	290	72%	58%						72%	65%					
2009	329	73%							78%						

Source: EIS and DIS files.

Table 5a
Salisbury University
Retention and Graduation Rates
First-Time, Full-Time, Degree-Seeking Freshmen Entering in the Fall Semester

Cohort Year	Cohort Size	Institution of First-Time Entry							Anywhere in the USM						
		Retention Rates			Graduation Rates			Enrolled 7th Year	Retention Rates			Graduation Rates			Enrolled 7th Year
2nd Yr	3rd Yr	4th Yr	4-year	5-year	6-year	2nd Yr	3rd Yr		4th Yr	4-year	5-year	6-year			
1990	659	78%	67%	62%	41%	55%	58%	3%	81%	74%	71%	44%	62%	66%	5%
1991	722	80%	68%	64%	42%	58%	61%	2%	82%	72%	70%	44%	62%	68%	4%
1992	647	83%	71%	65%	43%	60%	64%	2%	85%	76%	74%	45%	66%	70%	4%
1993	739	79%	67%	62%	42%	60%	63%	1%	82%	74%	68%	44%	64%	69%	4%
1994	695	79%	69%	65%	49%	63%	66%	1%	84%	77%	74%	53%	71%	74%	3%
1995	658	83%	74%	69%	52%	68%	71%	2%	88%	81%	75%	56%	74%	78%	4%
1996	689	85%	74%	67%	45%	64%	68%	2%	88%	80%	76%	48%	70%	74%	3%
1997	886	82%	71%	69%	48%	67%	69%	2%	85%	79%	78%	50%	72%	76%	4%
1998	935	81%	73%	69%	47%	65%	67%	1%	86%	80%	77%	47%	68%	72%	2%
1999	877	82%	75%	69%	52%	66%	67%	1%	86%	80%	77%	51%	68%	70%	2%
2000	940	83%	75%	71%	50%	65%	68%	1%	87%	82%	79%	52%	69%	73%	2%
2001	945	81%	73%	71%	44%	63%	66%	1%	86%	80%	78%	46%	68%	73%	3%
2002	908	80%	73%	71%	45%	63%	67%	1%	85%	80%	78%	47%	68%	73%	2%
2003	947	81%	72%	69%	46%	63%	66%	2%	85%	79%	78%	48%	69%	73%	3%
2004	982	83%	75%	71%	46%	66%	69%	1%	88%	81%	79%	49%	71%	76%	3%
2005	956	81%	72%	69%	46%	62%			85%	79%	75%	48%	66%		
2006	1,028	80%	73%	70%	48%				84%	78%	75%	50%			
2007	1,143	82%	73%	68%					86%	76%	75%				
2008	1,199	80%	72%						80%	77%					
2009	1,275	80%							84%						

Source: EIS and DIS files.

Table 5b
Salisbury University
Retention and Graduation Rates of African-Americans
First-Time, Full-Time, Degree-Seeking Freshmen Entering in the Fall Semester

Cohort Year	Cohort Size	Institution of First-Time Entry							Anywhere in the USM						
		Retention Rates			Graduation Rates			Enrolled 7th Year	Retention Rates			Graduation Rates			Enrolled 7th Year
2nd Yr	3rd Yr	4th Yr	4-year	5-year	6-year	2nd Yr	3rd Yr		4th Yr	4-year	5-year	6-year			
1990	42	86%	74%	62%	24%	48%	52%	5%	86%	76%	67%	26%	50%	55%	10%
1991	37	68%	54%	54%	14%	32%	38%	8%	68%	54%	59%	14%	35%	43%	14%
1992	46	74%	63%	61%	24%	41%	57%	4%	74%	65%	67%	24%	43%	61%	7%
1993	54	59%	57%	52%	26%	44%	52%	2%	65%	69%	54%	28%	46%	54%	4%
1994	53	74%	68%	60%	32%	49%	57%	0%	77%	72%	70%	34%	51%	60%	2%
1995	34	79%	74%	65%	32%	62%	65%	0%	79%	76%	68%	35%	65%	68%	0%
1996	60	72%	63%	57%	25%	43%	50%	5%	75%	75%	72%	25%	47%	55%	8%
1997	45	62%	56%	47%	24%	40%	42%	2%	67%	67%	69%	29%	47%	58%	4%
1998	41	71%	63%	44%	32%	39%	44%	2%	83%	76%	61%	24%	44%	54%	5%
1999	35	63%	63%	63%	26%	55%	61%	0%	63%	66%	66%	29%	58%	64%	0%
2000	32	78%	63%	53%	31%	44%	50%	0%	84%	72%	72%	38%	54%	60%	6%
2001	86	74%	64%	62%	27%	50%	55%	1%	79%	70%	70%	27%	53%	57%	7%
2002	84	75%	74%	64%	19%	45%	56%	2%	79%	81%	75%	20%	49%	64%	5%
2003	79	82%	75%	72%	27%	56%	59%	1%	84%	80%	82%	27%	59%	66%	3%
2004	75	80%	65%	57%	24%	47%	53%	0%	80%	69%	65%	25%	51%	59%	1%
2005	94	83%	66%	66%	26%	51%			83%	69%	72%	26%	52%		
2006	125	86%	77%	74%	33%				87%	79%	78%	33%			
2007	129	76%	64%	61%					79%	66%	71%				
2008	115	77%	63%						77%	72%					
2009	132	80%							83%						

Source: EIS and DIS files.

Table 6a
Towson University
Retention and Graduation Rates
First-Time, Full-Time, Degree-Seeking Freshmen Entering in the Fall Semester

Cohort Year	Cohort Size	Institution of First-Time Entry							Anywhere in the USM						
		Retention Rates			Graduation Rates			Enrolled 7th Year	Retention Rates			Graduation Rates			Enrolled 7th Year
2nd Yr	3rd Yr	4th Yr	4-year	5-year	6-year	2nd Yr	3rd Yr		4th Yr	4-year	5-year	6-year			
1990	1,425	83%	75%	71%	24%	53%	61%	5%	85%	78%	75%	25%	56%	65%	6%
1991	1,253	81%	71%	65%	25%	49%	56%	5%	82%	75%	71%	26%	52%	60%	7%
1992	1,343	82%	73%	67%	27%	53%	59%	4%	84%	76%	71%	28%	56%	63%	6%
1993	1,221	80%	71%	66%	26%	52%	58%	3%	83%	76%	71%	28%	56%	62%	5%
1994	1,341	81%	70%	65%	25%	50%	56%	4%	83%	73%	68%	26%	52%	59%	6%
1995	1,494	81%	74%	70%	32%	56%	62%	3%	83%	76%	74%	32%	59%	65%	5%
1996	1,851	80%	71%	67%	28%	52%	57%	4%	82%	75%	72%	29%	55%	60%	6%
1997	1,808	82%	72%	67%	31%	52%	57%	4%	83%	76%	71%	31%	54%	60%	6%
1998	1,923	83%	74%	69%	30%	55%	61%	2%	85%	78%	73%	31%	58%	64%	3%
1999	2,103	81%	72%	68%	29%	51%	57%	2%	83%	76%	73%	31%	54%	61%	3%
2000	1,981	82%	75%	69%	30%	54%	60%	3%	85%	79%	74%	31%	56%	63%	4%
2001	1,910	86%	76%	72%	33%	57%	62%	3%	88%	80%	77%	34%	60%	66%	4%
2002	2,198	84%	75%	72%	36%	60%	64%	3%	87%	80%	77%	38%	64%	69%	4%
2003	1,755	84%	79%	76%	42%	66%	70%	2%	88%	83%	81%	44%	69%	74%	3%
2004	2,077	82%	76%	72%	37%	60%	66%	3%	86%	82%	79%	39%	65%	72%	4%
2005	2,315	79%	73%	68%	37%	58%			84%	78%	75%	40%	62%		
2006	2,690	81%	73%	69%	35%				84%	78%	74%	38%			
2007	2,652	81%	73%	69%					84%	75%	73%				
2008	2,824	83%	76%						84%	79%					
2009	2,397	84%							87%						

Source: EIS and DIS files.

Table 6b
Towson University
Retention and Graduation Rates of African-Americans
First-Time, Full-Time, Degree-Seeking Freshmen Entering in the Fall Semester

Cohort Year	Cohort Size	Institution of First-Time Entry							Anywhere in the USM						
		Retention Rates			Graduation Rates			Enrolled 7th Year	Retention Rates			Graduation Rates			Enrolled 7th Year
2nd Yr	3rd Yr	4th Yr	4-year	5-year	6-year	2nd Yr	3rd Yr		4th Yr	4-year	5-year	6-year			
1990	125	82%	78%	73%	14%	45%	54%	12%	83%	78%	76%	14%	46%	55%	17%
1991	140	76%	69%	64%	14%	39%	46%	3%	76%	71%	69%	15%	44%	53%	6%
1992	127	85%	76%	66%	24%	45%	50%	7%	86%	79%	70%	24%	46%	50%	12%
1993	140	77%	66%	61%	19%	36%	43%	6%	79%	72%	69%	19%	40%	48%	9%
1994	186	78%	71%	62%	17%	40%	45%	5%	80%	75%	66%	18%	43%	48%	8%
1995	147	82%	71%	65%	17%	39%	44%	6%	82%	73%	67%	17%	39%	45%	8%
1996	159	86%	70%	67%	15%	41%	46%	7%	86%	73%	70%	15%	43%	48%	9%
1997	170	81%	73%	63%	24%	42%	47%	9%	82%	76%	67%	24%	45%	51%	12%
1998	162	83%	73%	68%	15%	43%	52%	3%	86%	78%	75%	17%	46%	55%	6%
1999	192	85%	76%	73%	29%	47%	55%	3%	86%	79%	75%	29%	48%	56%	7%
2000	148	87%	78%	74%	26%	53%	60%	3%	89%	80%	76%	26%	54%	61%	6%
2001	152	93%	83%	77%	30%	54%	59%	6%	94%	86%	83%	30%	54%	61%	9%
2002	153	92%	81%	77%	31%	56%	67%	2%	92%	83%	82%	32%	58%	68%	5%
2003	162	90%	87%	84%	37%	66%	73%	6%	92%	89%	87%	38%	68%	75%	7%
2004	167	90%	83%	81%	31%	62%	72%	2%	92%	87%	86%	31%	64%	77%	4%
2005	268	85%	74%	68%	25%	46%			85%	75%	70%	25%	47%		
2006	304	85%	77%	68%	22%				87%	81%	73%	23%			
2007	260	84%	74%	68%					85%	76%	72%				
2008	290	88%	81%						89%	83%					
2009	293	83%							86%						

Source: EIS and DIS files.

Table 7a
University of Maryland Baltimore County
Retention and Graduation Rates
First-Time, Full-Time, Degree-Seeking Freshmen Entering in the Fall Semester

Cohort Year	Cohort Size	Institution of First-Time Entry							Anywhere in the USM						
		Retention Rates			Graduation Rates			Enrolled 7th Year	Retention Rates			Graduation Rates			Enrolled 7th Year
2nd Yr	3rd Yr	4th Yr	4-year	5-year	6-year	2nd Yr	3rd Yr		4th Yr	4-year	5-year	6-year			
1990	1,050	82%	67%	58%	17%	37%	44%	6%	85%	78%	72%	19%	47%	58%	9%
1991	912	81%	66%	58%	19%	38%	45%	5%	84%	74%	67%	21%	44%	53%	8%
1992	883	83%	69%	61%	21%	43%	50%	5%	85%	76%	70%	23%	49%	57%	7%
1993	930	82%	69%	61%	21%	42%	50%	4%	86%	77%	72%	23%	49%	60%	7%
1994	768	83%	67%	60%	23%	44%	50%	4%	86%	76%	71%	24%	51%	59%	7%
1995	968	83%	69%	63%	28%	47%	52%	5%	87%	77%	73%	30%	52%	60%	7%
1996	1,005	82%	70%	63%	26%	46%	51%	4%	86%	76%	71%	28%	50%	57%	8%
1997	1,136	84%	71%	63%	28%	48%	54%	4%	87%	77%	71%	30%	52%	60%	7%
1998	1,246	83%	69%	61%	26%	46%	53%	1%	87%	76%	70%	28%	52%	61%	4%
1999	1,400	81%	69%	63%	27%	47%	54%	1%	85%	76%	71%	29%	53%	62%	3%
2000	1,307	82%	69%	64%	26%	46%	52%	4%	88%	78%	74%	29%	54%	62%	6%
2001	1,333	82%	72%	66%	31%	50%	56%	4%	88%	79%	75%	33%	56%	63%	6%
2002	1,356	82%	71%	65%	28%	49%	56%	4%	89%	80%	76%	32%	56%	65%	7%
2003	1,489	82%	71%	67%	32%	51%	59%	4%	89%	81%	79%	35%	59%	67%	6%
2004	1,403	81%	69%	64%	31%	50%	55%	4%	87%	79%	77%	35%	59%	66%	7%
2005	1,415	82%	68%	63%	30%	48%			88%	78%	75%	34%	57%		
2006	1,419	84%	72%	67%	33%				89%	80%	74%	37%			
2007	1,424	87%	75%	69%					90%	78%	76%				
2008	1,557	84%	71%						85%	78%					
2009	1,524	83%							86%						

Source: EIS and DIS files.

Table 7b
University of Maryland Baltimore County
Retention and Graduation Rates of African-Americans
First-Time, Full-Time, Degree-Seeking Freshmen Entering in the Fall Semester

Cohort Year	Cohort Size	Institution of First-Time Entry							Anywhere in the USM						
		Retention Rates			Graduation Rates			Enrolled 7th Year	Retention Rates			Graduation Rates			Enrolled 7th Year
2nd Yr	3rd Yr	4th Yr	4-year	5-year	6-year	2nd Yr	3rd Yr		4th Yr	4-year	5-year	6-year			
1990	170	82%	72%	64%	12%	32%	45%	4%	85%	78%	72%	14%	36%	54%	8%
1991	173	85%	68%	64%	21%	45%	51%	5%	86%	76%	72%	22%	49%	58%	8%
1992	130	86%	75%	62%	25%	44%	49%	3%	87%	79%	67%	26%	46%	53%	6%
1993	155	92%	85%	73%	23%	44%	57%	4%	95%	88%	80%	25%	48%	61%	6%
1994	133	93%	81%	74%	30%	55%	60%	2%	94%	86%	80%	31%	59%	65%	5%
1995	169	90%	74%	71%	35%	55%	57%	4%	91%	79%	76%	37%	57%	62%	5%
1996	145	88%	74%	64%	27%	47%	52%	6%	90%	80%	71%	29%	50%	57%	12%
1997	183	91%	79%	70%	28%	48%	56%	2%	91%	80%	74%	28%	49%	59%	5%
1998	179	93%	77%	70%	26%	52%	59%	1%	94%	82%	77%	27%	55%	62%	3%
1999	185	88%	78%	72%	28%	50%	59%	1%	89%	82%	76%	29%	53%	63%	2%
2000	166	89%	74%	69%	22%	47%	56%	6%	92%	80%	75%	25%	51%	61%	8%
2001	149	87%	75%	73%	33%	54%	61%	3%	88%	79%	78%	34%	57%	64%	4%
2002	119	87%	76%	68%	21%	49%	55%	6%	89%	78%	77%	21%	52%	61%	10%
2003	157	90%	80%	75%	33%	52%	59%	4%	93%	86%	83%	33%	56%	65%	6%
2004	131	87%	74%	69%	28%	50%	57%	3%	89%	79%	78%	31%	56%	63%	6%
2005	143	91%	77%	72%	30%	50%			91%	84%	78%	33%	55%		
2006	166	91%	82%	77%	34%				92%	84%	78%	34%			
2007	199	90%	80%	76%					93%	82%	79%				
2008	209	86%	72%						87%	75%					
2009	226	90%							91%						

Source: EIS and DIS files.

Table 8a
University of Maryland College Park
Retention and Graduation Rates
First-Time, Full-Time, Degree-Seeking Freshmen Entering in the Fall Semester

Cohort Year	Cohort Size	Institution of First-Time Entry							Anywhere in the USM						
		Retention Rates			Graduation Rates			Enrolled 7th Year	Retention Rates			Graduation Rates			Enrolled 7th Year
2nd Yr	3rd Yr	4th Yr	4-year	5-year	6-year	2nd Yr	3rd Yr		4th Yr	4-year	5-year	6-year			
1990	3,119	84%	73%	68%	26%	52%	60%	5%	85%	75%	72%	27%	54%	63%	7%
1991	3,125	82%	72%	69%	26%	54%	61%	4%	83%	74%	72%	26%	56%	64%	6%
1992	3,129	84%	74%	71%	27%	54%	63%	4%	84%	76%	73%	28%	55%	65%	7%
1993	3,163	85%	76%	72%	29%	56%	64%	4%	86%	78%	75%	29%	58%	66%	7%
1994	3,655	85%	75%	70%	30%	58%	65%	3%	85%	76%	73%	30%	59%	67%	6%
1995	3,589	86%	75%	72%	34%	59%	66%	4%	87%	77%	75%	34%	61%	69%	7%
1996	3,553	87%	78%	74%	38%	64%	71%	3%	88%	80%	77%	38%	65%	73%	6%
1997	3,960	88%	79%	75%	40%	67%	74%	3%	88%	80%	78%	41%	68%	76%	5%
1998	4,056	89%	81%	77%	44%	71%	77%	1%	90%	82%	80%	41%	66%	72%	3%
1999	3,892	90%	83%	80%	48%	73%	78%	1%	91%	84%	82%	45%	71%	77%	2%
2000	3,952	91%	84%	80%	48%	73%	77%	2%	91%	85%	83%	48%	74%	79%	3%
2001	4,357	91%	84%	81%	52%	72%	76%	1%	92%	85%	83%	53%	74%	79%	3%
2002	3,898	92%	85%	83%	58%	77%	80%	1%	93%	87%	85%	58%	78%	82%	2%
2003	4,055	92%	85%	83%	57%	77%	80%	1%	92%	86%	86%	58%	79%	82%	3%
2004	4,178	92%	85%	82%	58%	76%	79%	1%	92%	87%	85%	58%	78%	81%	3%
2005	4,198	91%	85%	82%	61%	77%			92%	86%	84%	61%	78%		
2006	3,945	92%	85%	83%	59%				93%	87%	84%	59%			
2007	4,224	93%	86%	84%					94%	87%	86%				
2008	3,900	93%	88%						93%	89%					
2009	4,193	95%							95%						

Source: EIS and DIS files.

Table 8b
University of Maryland College Park
Retention and Graduation Rates of African-Americans
First-Time, Full-Time, Degree-Seeking Freshmen Entering in the Fall Semester

Cohort Year	Cohort Size	Institution of First-Time Entry							Anywhere in the USM						
		Retention Rates			Graduation Rates			Enrolled 7th Year	Retention Rates			Graduation Rates			Enrolled 7th Year
2nd Yr	3rd Yr	4th Yr	4-year	5-year	6-year	2nd Yr	3rd Yr		4th Yr	4-year	5-year	6-year			
1990	472	82%	68%	60%	13%	33%	42%	7%	83%	70%	63%	13%	35%	44%	11%
1991	406	76%	61%	57%	14%	35%	43%	4%	76%	63%	61%	15%	36%	45%	8%
1992	353	80%	68%	66%	14%	40%	47%	7%	80%	69%	69%	14%	41%	48%	11%
1993	463	84%	68%	62%	14%	37%	45%	7%	84%	70%	65%	14%	38%	47%	11%
1994	513	82%	71%	62%	16%	42%	52%	4%	82%	72%	64%	16%	43%	54%	7%
1995	547	83%	68%	60%	15%	36%	48%	6%	84%	70%	64%	15%	37%	50%	12%
1996	551	83%	73%	67%	21%	46%	56%	4%	84%	74%	70%	21%	46%	58%	7%
1997	578	85%	74%	69%	20%	48%	57%	4%	86%	77%	74%	21%	50%	60%	7%
1998	516	84%	75%	68%	22%	48%	57%	2%	85%	76%	72%	22%	47%	57%	5%
1999	527	88%	81%	76%	30%	57%	65%	1%	89%	83%	79%	30%	58%	66%	4%
2000	476	87%	78%	73%	31%	61%	68%	2%	88%	80%	77%	31%	63%	71%	4%
2001	526	87%	78%	73%	36%	59%	65%	3%	87%	80%	78%	37%	61%	67%	6%
2002	451	88%	80%	77%	38%	62%	67%	3%	88%	83%	81%	39%	64%	70%	4%
2003	518	89%	80%	77%	40%	63%	69%	3%	89%	82%	80%	40%	64%	70%	4%
2004	512	87%	79%	74%	40%	62%	68%	2%	87%	83%	80%	41%	64%	71%	6%
2005	563	89%	82%	77%	41%	67%			89%	83%	80%	42%	68%		
2006	611	91%	83%	80%	43%				91%	86%	82%	43%			
2007	565	95%	85%	83%					95%	86%	85%				
2008	537	91%	85%						91%	87%					
2009	385	95%							95%						

Source: EIS and DIS files.

Table 9a
University of Maryland Eastern Shore
Retention and Graduation Rates
First-Time, Full-Time, Degree-Seeking Freshmen Entering in the Fall Semester

Cohort Year	Cohort Size	Institution of First-Time Entry							Anywhere in the USM						
		Retention Rates			Graduation Rates			Enrolled 7th Year	Retention Rates			Graduation Rates			Enrolled 7th Year
2nd Yr	3rd Yr	4th Yr	4-year	5-year	6-year	2nd Yr	3rd Yr		4th Yr	4-year	5-year	6-year			
1990	494	68%	49%	42%	13%	24%	29%	2%	70%	55%	50%	14%	26%	32%	5%
1991	569	71%	52%	45%	13%	27%	31%	1%	74%	58%	53%	14%	30%	35%	4%
1992	499	68%	52%	38%	14%	25%	29%	2%	72%	60%	51%	15%	30%	36%	6%
1993	523	72%	52%	44%	18%	32%	36%	1%	77%	61%	57%	20%	36%	42%	6%
1994	739	64%	48%	43%	18%	32%	36%	1%	69%	58%	55%	19%	36%	41%	6%
1995	714	75%	57%	48%	22%	37%	40%	2%	81%	68%	64%	24%	42%	48%	6%
1996	728	74%	59%	46%	24%	37%	41%	1%	79%	72%	62%	26%	43%	49%	5%
1997	646	76%	58%	52%	26%	40%	44%	1%	82%	72%	68%	30%	47%	54%	5%
1998	622	70%	55%	49%	24%	39%	42%	2%	76%	69%	64%	27%	45%	50%	3%
1999	533	74%	57%	52%	25%	38%	41%	1%	83%	71%	67%	26%	43%	48%	4%
2000	780	66%	54%	47%	19%	30%	34%	3%	72%	66%	61%	20%	34%	40%	6%
2001	1,194	71%	56%	42%	16%	28%	32%	2%	77%	69%	56%	18%	33%	38%	6%
2002	918	69%	51%	43%	22%	34%	38%	2%	75%	61%	55%	23%	40%	45%	2%
2003	951	67%	48%	39%	18%	29%	32%	3%	73%	58%	51%	20%	34%	38%	6%
2004	926	64%	48%	40%	17%	27%	32%	3%	68%	56%	50%	20%	31%	36%	6%
2005	983	65%	46%	40%	15%	27%			69%	55%	51%	14%	30%		
2006	1,127	64%	45%	41%	13%				67%	55%	44%	14%			
2007	875	65%	48%	44%					70%	46%	52%				
2008	1,038	69%	51%						69%	59%					
2009	876	64%							66%						

Source: EIS and DIS files.

Table 9b
University of Maryland Eastern Shore
Retention and Graduation Rates of African-Americans
First-Time, Full-Time, Degree-Seeking Freshmen Entering in the Fall Semester

Cohort Year	Cohort Size	Institution of First-Time Entry							Anywhere in the USM						
		Retention Rates			Graduation Rates			Enrolled 7th Year	Retention Rates			Graduation Rates			Enrolled 7th Year
2nd Yr	3rd Yr	4th Yr	4-year	5-year	6-year	2nd Yr	3rd Yr		4th Yr	4-year	5-year	6-year			
1990	404	68%	50%	43%	13%	24%	30%	2%	70%	55%	51%	14%	26%	33%	5%
1991	463	74%	56%	48%	14%	29%	33%	1%	76%	60%	54%	14%	30%	35%	3%
1992	395	71%	53%	42%	14%	27%	31%	3%	74%	61%	52%	15%	31%	36%	7%
1993	435	74%	54%	46%	20%	34%	37%	1%	77%	61%	56%	20%	37%	42%	6%
1994	604	67%	50%	45%	19%	33%	37%	2%	71%	60%	58%	20%	37%	43%	5%
1995	602	77%	59%	51%	23%	38%	42%	2%	81%	69%	66%	24%	43%	49%	6%
1996	615	76%	62%	49%	24%	40%	43%	1%	80%	74%	64%	26%	45%	51%	4%
1997	544	78%	60%	53%	27%	41%	45%	1%	83%	72%	69%	30%	47%	54%	5%
1998	523	72%	57%	50%	25%	40%	43%	1%	76%	69%	64%	28%	45%	50%	3%
1999	465	77%	58%	54%	26%	40%	43%	1%	84%	72%	67%	27%	44%	48%	3%
2000	670	67%	55%	47%	19%	30%	34%	3%	72%	67%	61%	21%	35%	41%	6%
2001	883	70%	56%	42%	16%	28%	32%	2%	76%	68%	55%	18%	34%	38%	6%
2002	734	71%	53%	45%	21%	34%	37%	2%	75%	63%	56%	22%	38%	43%	4%
2003	794	67%	49%	41%	18%	30%	32%	3%	74%	60%	53%	20%	35%	39%	6%
2004	753	64%	49%	40%	16%	26%	30%	3%	68%	57%	50%	19%	30%	35%	7%
2005	867	65%	46%	41%	16%	27%			69%	56%	52%	17%	31%		
2006	1,005	65%	47%	42%	12%				68%	57%	50%	13%			
2007	779	65%	48%	43%					69%	51%	52%				
2008	931	70%	52%						70%	59%					
2009	787	66%							68%						

Source: EIS and DIS files.

Table 10a
University of Baltimore
Retention and Graduation Rates
First-Time, Full-Time, Degree-Seeking Freshmen Entering in the Fall Semester

Cohort Year	Cohort Size	Institution of First-Time Entry					Anywhere in the USM							
		Retention Rates			Graduation Rates		Enrolled 7th Year	Retention Rates			Graduation Rates		Enrolled 7th Year	
2nd Yr	3rd Yr	4th Yr	4-year	5-year	6-year	2nd Yr		3rd Yr	4th Yr	4-year	5-year	6-year		
2007	143	68%	55%	49%					72%	65%	62%			
2008	163	82%	63%						83%	70%				
2009	174	76%							80%					

Source: EIS and DIS files.

UB enrolled Freshmen for the first time in 2007

Table 10b
University of Baltimore
Retention and Graduation Rates of African-Americans
First-Time, Full-Time, Degree-Seeking Freshmen Entering in the Fall Semester

Cohort Year	Cohort Size	Institution of First-Time Entry					Anywhere in the USM							
		Retention Rates			Graduation Rates			Enrolled 7th Year	Retention Rates			Graduation Rates		
2nd Yr	3rd Yr	4th Yr	4-year	5-year	6-year	2nd Yr	3rd Yr		4th Yr	4-year	5-year	6-year		
2007	52	77%	65%	54%					81%	71%	62%			
2008	66	74%	45%						74%	55%				
2009	93	77%							82%					

Source: EIS and DIS files.