



---

**TOPIC:** Transfer Students to the University System of Maryland: Patterns of Enrollment and Success FY 2011

**COMMITTEE:** Education Policy

**DATE OF COMMITTEE MEETING:** June 6, 2012

**SUMMARY:** Transfer students are a vital segment of the USM undergraduate student population. In FY 2011, over 20,000 new transfer students at USM had attended another college or university previously, with over half transferring from Maryland's community colleges. The *Transfer Students to the University System of Maryland: Patterns of Enrollment and Success* report examines the trends in number of Maryland community college transfer students, their demographic characteristics, programs of study, attendance patterns and graduation rates. This report also supports the work of the Access and Transfer Committee of the USM/MACC Joint Leadership Council.

**ALTERNATIVE(S):** This report is for information only.

**FISCAL IMPACT:** This report is for information only.

**CHANCELLOR'S RECOMMENDATION:** This report is for information only.

---

COMMITTEE RECOMMENDATION:

DATE:

---

BOARD ACTION:

DATE:

---

SUBMITTED BY: Joseph F. Vivona

(301) 445-1923

jvivona@usmd.edu

---



# **TRANSFER STUDENTS TO THE UNIVERSITY SYSTEM OF MARYLAND:**

*Patterns of Enrollment and Success*

*Updated through FY 2011*

*Bowie State University (BSU)*  
*Coppin State University (CSU)*  
*Frostburg State University (FSU)*  
*Salisbury University (SU)*  
*Towson University (TU)*  
*University of Baltimore (UB)*  
*University of Maryland, Baltimore (UMB)*  
*University of Maryland, Baltimore County (UMBC)*  
*University of Maryland, College Park (UMCP)*  
*University of Maryland Eastern Shore (UMES)*  
*University of Maryland University College (UMUC)*

**Office of the Chief Operating Officer and  
Vice Chancellor for Administration and Finance  
University System of Maryland  
June 2012**

Transfer Students to the University System of Maryland  
Patterns of Enrollment and Success Through FY 2011

**Highlights:**

- In FY 2011, 19,242 students transferred to a USM institution. Approximately 52 percent (10,029) came from a Maryland community college.
- The number of Maryland community college students who transferred in FY 2011 increased by 5% (500+) over the FY 2010 level, with the largest increase occurring at Towson (+410 over FY 10).
- Over the past five years (FY 2007 - FY 2011) the number of Maryland community college students transferring to a USM institution has increased by 12 percent (+1,055), with the vast majority of those transferring to Towson (+387), UMUC (+379), or UMBC (+306).
- Six of Maryland's 16 public community colleges – all within the Baltimore-DC corridor – supplied over 70% of the community college transfers entering a USM institution in FY 11; however, over the past five years the most rapid growth in the number of students transferring to a USM institution from a community college has occurred at community colleges outside the Baltimore-DC corridor (Frederick, Cecil, Harford, Carrol, and Southern Maryland).
- The largest proportion of Maryland community college students who transferred to USM institutions in FY 2011 enrolled in the following program areas: business and management (22%), social sciences (12%), computer and information science (10%), education (8%), and the health professions (7%). This was consistent with historical trends.
- Seventy percent (70%) of Maryland community college students who transferred to USM institutions in FY 2011 enrolled as full-time students (based on fall 2010 enrollments). A gap still remains in the full-time enrollment of African-American transfers who continue to hold at a full-time enrollment rate of just below sixty percent (57%) compared to 76% of white transfer students.
- Eighty percent (80%) Maryland community college students who transferred to a USM institution in FY 2011 (based on fall 2010 enrollment) entered with either sophomore or junior status.
- Fifty percent (50%) of the FY 2008 cohort of Maryland community college transfers to USM institutions graduated within four years of transferring.
- Sixty-four percent (64%) of the FY 2008 (fall 2007) cohort of full-time Maryland community college transfers to USM institutions graduated within four years of transferring. This was a rate of success comparable to the fall 2005 full-time, first-time new freshmen cohort six-year graduation rate of 64%.

# Transfer Students to the University System of Maryland Patterns of Enrollment and Success Through FY 2011

## **Background**

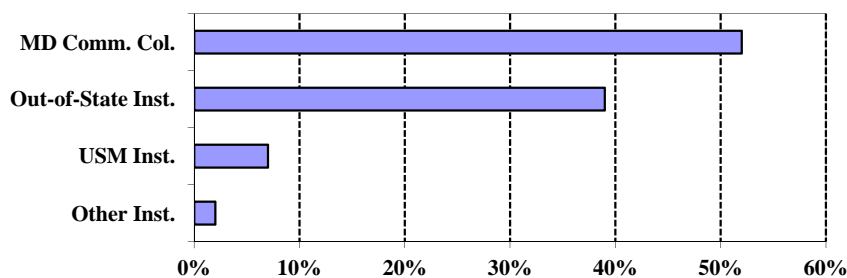
The following report provides data on demographic characteristics, enrollment status, enrollment trends, and graduation rates for transfer students to institutions in the University System of Maryland. Most of the data supplied in this report were extracted from the 2011 Transfer Student System (TSS) data file.<sup>1</sup> The TSS was originally designed by the Maryland Higher Education Commission (MHEC), the University System of Maryland (USM), and the Maryland community colleges to provide feedback to the community colleges about the success of their students. The TSS from USM institutions also collects data on students who transferred across USM institutions, from other Maryland institutions, and from out-of-state institutions. Those data are presented in tables that appear in the appendix of this report. The data affirm that transfer students are a vital segment of our undergraduate population. Because all TSS data are continuously updated by the institutions, the information contained in this report is not comparable to information found in reports from prior years. The information in this report reflects the most recent updates to data from FY 2007 through FY 2011. For further information, please contact Chad Muntz, [cmuntz@usmd.edu](mailto:cmuntz@usmd.edu), 301-445-2737 or Becky Bell, [rbell@usmd.edu](mailto:rbell@usmd.edu), 301-405-2779.

## **First-time Transfers to USM<sup>2</sup>**

First-time transfers make up a substantial part of newly enrolled undergraduate students at USM institutions. Over 19,200 students transferred into USM institutions in FY 2011 (including summer 2010, fall 2010, and spring 2011 semesters). This represents close to 18% of all undergraduate students attending a USM institution last fiscal year. Half of the students who transferred to a USM institution came from a Maryland community college.

**Figure 1**

**Transfers to USM Institutions By Source of Transfer FY 2011**



<sup>1</sup> The TSS data files were matched with the fall Enrollment Information System (EIS) data files to provide additional information on enrollment status and student level upon entry.

<sup>2</sup> First-time transfers are defined as students transferring for the first time from a higher education institution with 12 or more credits.

Transfer Students to the University System of Maryland  
Patterns of Enrollment and Success Through FY 2011

**First-Time Community College Transfers to the USM in FY 2011**

***Enrollment Growth***

Over 10,000 new students transferred from a Maryland community college to a USM institution in FY 2011. Over the past 5 years (FY 2007 – FY 2011), the number of new Maryland community college transfer students has grown 12 percent from 8,974 to 10,029.

Since FY 2007, the number of Maryland community college transfers to USM institutions has grown an average of two percent (2%) annually. Those experiencing the most growth between FY 2007- FY 2011 were Towson (+387), UMUC (+379), UMBC (+306), UMCP (+108), Salisbury (+72), Frostburg (+71) and UMES (+25). UB (-208), Bowie (-43), UMB (-28) and Coppin (-14) have fewer community college transfers in FY 2011 than FY 2007.

***Selected Demographics***

African-American students made up 23 percent of the transfer students from Maryland community colleges entering USM institutions in FY 2011. The number of African-American community college transfers was largest at UMUC (37%), followed by Towson (12%), UB (11%), UMBC (9%), and UMCP (9%). Hispanic students comprised seven percent (7%) of the FY 11 community college transfers entering a USM institution. Having increased 85% since FY 2007, this group easily represented the fastest growing segment of USM community college transfers. Growth in Latino transfers was primarily found at UMCP (31%) followed by UMUC (29%), Towson (17%) and UMBC (11%). Finally, the proportion of community college transfers who were white increased slightly in FY 11, and now represents 54% of the community college transfers. White transfer student enrollment was largest at Towson (27%), UMUC (23%), UMCP (15%), and UMBC (12%).

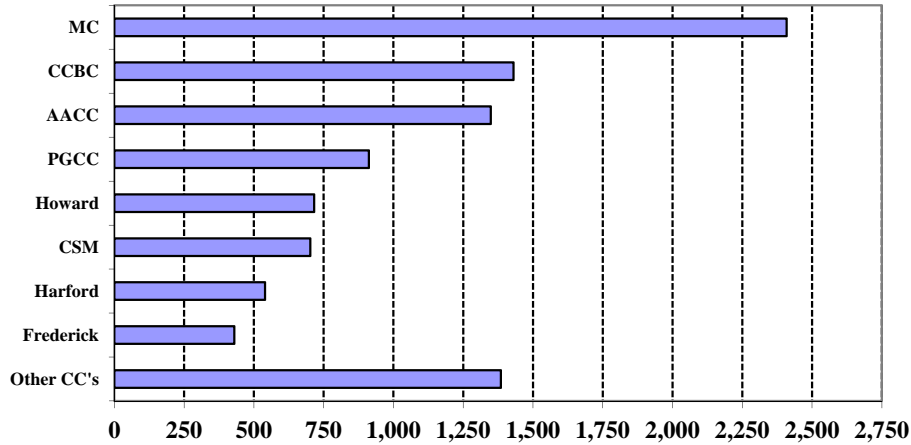
Approximately 55% of Maryland community college transfers to USM institutions were female. The average age of first-time community college transfer students to USM institutions was significantly above that of new freshmen. The average age among Maryland community college transfers was 27 compared to an average age of 19 among new freshmen. However, almost 54 percent of these transfer students were between 20-24 years of age.

***Transfer and Enrollment Patterns***

Seven out of ten Maryland community college students transferring to the USM in FY 2011 came from just six of the state's 16 public two-year institutions, all located within or close to the Baltimore-Washington Region (See Figure 2). Enrollment at these six institutions has grown 8% over the past five years. However, the community colleges transfers from the outskirts of the Baltimore-Washington region (Frederick, Cecil, Harford, Carrol, Hagerstown, and CSM) currently represent 23% of the Maryland community college transfers and have together increased 25% over the past five years. In FY 2011, almost all the community colleges saw five-year highs in the number of new transfer students – Allegany, Anne Arundel, Baltimore County, Carroll, Cecil, Frederick, Hagerstown, Harford, Howard and Montgomery. In FY 2011, Frederick surpassed Baltimore City with more transfers to a USM institution in FY 2011 due to a 16% increase of transfers from Frederick (+58) and a 17% decrease (-74) from Baltimore City.

Transfer Students to the University System of Maryland  
Patterns of Enrollment and Success Through FY 2011

**Figure 2**  
**Maryland Community College Transfers to USM Institutions**  
**FY 2011**

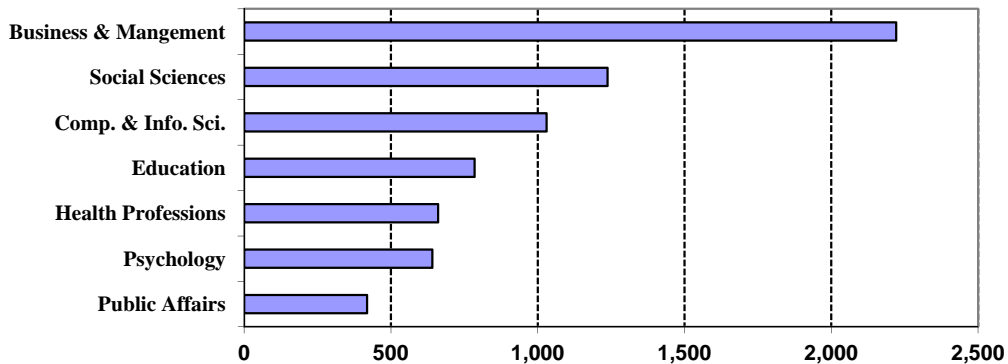


The five USM institutions enrolling the largest share of new Maryland community college transfers were: UMUC (2,750), Towson (2,017), UMCP (1,665), UMBC (1,267), and Salisbury (673). Together, these five institutions enrolled 83 percent of all Maryland community college transfers to the USM in FY 2011. Five USM institutions – Salisbury, Towson, UB, UMCP, and UMUC -- had at least one new community college transfer student from each of the 16 Maryland community colleges.

***Programs of Study***

Of the Maryland community college students who transferred to USM in FY 2011, 24% entered programs in business and management, 12% in the social sciences, 8% in computer and information science, 7% in education, 7% in the health professions, and 4% in Public Affairs (Public Affairs had surpassed Biological Sciences in FY 2011). Six percent of these students had an undeclared major.

**Figure 3**  
**Maryland Community College Transfers to USM Institutions**  
**By Program Area at Time of Transfer**  
**FY 2011**



Transfer Students to the University System of Maryland  
Patterns of Enrollment and Success Through FY 2011

***Fall Attendance Patterns and Student Level***

Sixty-five percent of all Maryland community college students who transferred to USM institutions in FY 2011 did so in the fall semester. Of those community college transfer students who entered in fall 2010, 70 percent attended on a full-time basis. The percentage of African-American transfer students attending full-time was 57 percent compared to 76 percent of white transfer students.

The African-American community college transfer student enrollment was largely at UMUC (37%) followed by Towson (12%), UB (11%), UMBC (9%), and UMCP (9%). In contrast, white transfer student enrollment was largest at Towson (27%) followed by UMUC (23%), UMCP (15%), and UMBC (12%). Our fastest growing group, Latino, was primarily found at UMCP (31%) followed by UMUC (29%), Towson (17%) and UMBC (11%).

The largest proportion of Maryland community college students who transferred to USM institutions in FY 2011 entered as either sophomores or juniors was 81% (fall 2010), which was a slight increase from 79% in FY 2009 (fall 2008). This average includes the 71% of African-American community college transfer students entered as sophomores or juniors compared to 85 percent of white students in fall 2009. The upward trend in the percentage of students entering with more credits is positive and decreases time to degree and increases efficiency.

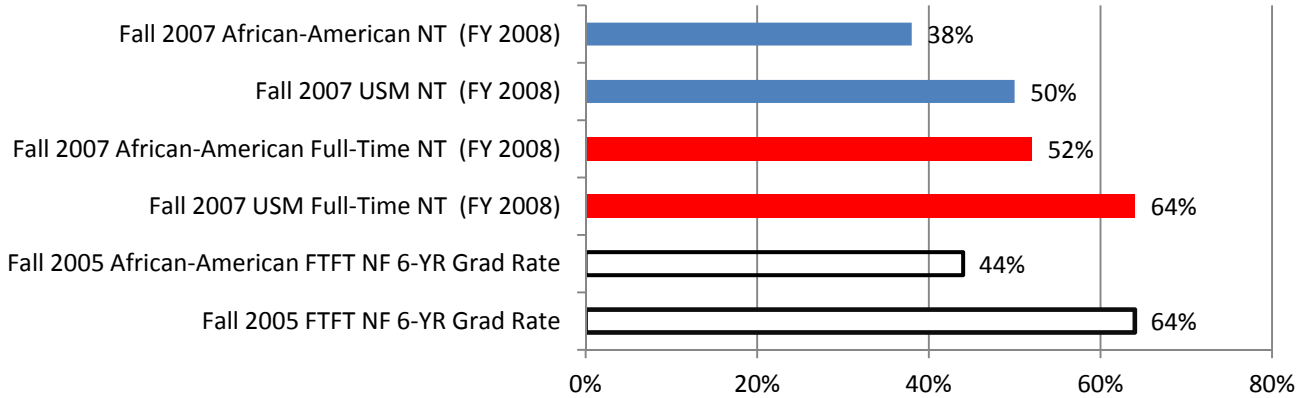
***Graduation Rates***

Of those Maryland community college transfers who enrolled in FY 2008, 50 percent graduated within four years at the same institution as entry. The graduation rate of Maryland community college transfers to the USM after four years was below that of new freshmen after six years (fall 2005 new freshmen cohort 59% at same institution as entry and 64% anywhere in USM). Given the differing entering attendance status, this lower graduation rate is to be expected.

Attendance status appeared to impact graduation rates for transfer students significantly. Transfers students attending part-time made up 34% of the fall 2007 student cohort in FY 2008. If the four-year graduation rate was calculated using full-time students, the graduation rate was comparable to the new freshmen cohort (64% for the fall 2007 full-time Maryland community college transfers versus 64% of the fall 2005 full-time new freshmen six year rate).

Of those African-American community college transfers who enrolled at a USM institution in FY 2008, 38 percent graduated within four years, up from 37 percent for the FY 2007 cohort. UMUC now accounts for 32% of all FY 2008 African-American transfers and most UMUC students attend part-time. In total, 42% of the African-American community college transfers attend part-time, which includes the UMUC students. After removing part-time students, the fall 2007 African-American transfer 4-year graduation rate increased to 52%.

**Figure 4**  
**Maryland Community College Transfers and USM New Freshmen Graduation Rates**  
**New Transfer 4 Year VS New Freshmen 6 Year**



The lower overall community college transfer graduation rate is mostly explained by the large numbers of part-time community college transfer students. Although there has been a significant portion of Maryland Community College Students attending part-time, in recent years, the portion of full-time students has been increasing. This is encouraging as the future time-to-degree will be positively impacted by more full-time transfer students as well as slight improvement on efficiency that slightly increases degree production.

Finally, within the USM, the four-year graduation rate for all FY 2008 Maryland community college transfers vary by campus and was highest at UMB (84%), Salisbury (69%), UMCP (66%), Towson (62%), Frostburg (64%), and Towson (62%). Among African-American community college transfers to the USM, graduation rates were highest at UMB (76%), UMCP (59%), and UMES (53%). Attendance status again interacts with the overall graduation rates of USM as an increasing number of transfers enroll at UMUC (24% in FY 2008). Historically, the UMUC students attend part-time with the most recent four-year graduation rate of 24%. The growing enrollment of UMUC continues to decrease the overall USM graduation rate to 50%. If the graduation rate was calculated without UMUC, the rate is 58%, one of the highest USM 4-year graduation rate. This non-UMUC rate reflects increasing success and faster time-to-degree for our Maryland community college students at the traditional USM campuses.



# **APPENDIX**

Table 1  
 University System of Maryland Transfer Students  
 By Type of Institution Transferred From  
 By Receiving Institution  
 FY 2011

**Number of Transfers**

	MD Comm Coll.	USM Inst.	MSU or SMCM	MD Private	Out-of-State	Total Transfers
Bowie	238	68	9	3	270	588
Coppin	200	36	13	7	90	346
Frostburg	354	22	1	7	240	624
Salisbury	673	78	9	25	266	1,051
Towson	2,017	82	9	25	795	2,928
UB	664	0	0	0	0	664
UMB	128	67	2	9	142	348
UMBC	1,267	147	11	28	381	1,834
UMCP	1,665	233	17	23	703	2,641
UMES	73	36	0	1	0	110
UMUC	2,750	663	68	66	4,561	8,108
USM	10,029	1,432	139	194	7,448	19,242

**Percent of Transfers**

	MD Comm Coll.	USM Inst.	MSU or SMCM	MD Private	Out-of-State	Total Transfers
Bowie	40%	12%	2%	1%	46%	100%
Coppin	58%	10%	4%	2%	26%	100%
Frostburg	57%	4%	0%	1%	38%	100%
Salisbury	64%	7%	1%	2%	25%	100%
Towson	69%	3%	0%	1%	27%	100%
UB	100%	0%	0%	0%	0%	100%
UMB	37%	19%	1%	3%	41%	100%
UMBC	69%	8%	1%	2%	21%	100%
UMCP	63%	9%	1%	1%	27%	100%
UMES	66%	33%	0%	1%	0%	100%
UMUC	34%	8%	1%	1%	56%	100%
USM	52%	7%	1%	1%	39%	100%

Note: Transfers are the number of undergraduates enrolled for the first time with 12 or more credits.  
 MSU=Morgan State University; SMCM=St. Mary's College of Maryland  
 Source: TSS

Table 2  
University System of Maryland  
First-time Transfers to USM Institutions  
FY 2007 - FY 2011

	FY 2007	FY 2008	FY 2009	FY 2010	FY 2011	FY 07-11 Δ Chg.
MD Comm College % of Total	8,974 48%	8,933 50%	9,468 51%	9,456 50%	10,029 52%	12%
USM Institutions % of Total	1,218 7%	1,217 7%	1,279 7%	1,378 7%	1,432 7%	18%
MSU & SMCM % of Total	131 1%	143 1%	154 1%	135 1%	139 1%	6%
Md Private Inst. % of Total	201 1%	185 1%	181 1%	209 1%	194 1%	-3%
Out-of-State Inst. & Unk % of Total	8,129 44%	7,460 42%	7,547 41%	7,656 41%	7,448 39%	-8%
Total % of Total	18,653 100%	17,938 100%	18,629 100%	18,834 100%	19,242 100%	3%

MSU=Morgan State University; SMCM=St. Mary's College of Maryland

Source: TSS

Table 3  
University System of Maryland  
Maryland Community College Transfers by Ethnicity  
FY 2007 - FY 2011

	FY 2007	FY 2008	FY 2009	FY 2010	FY 2011*	FY 07-11 Δ Chg.
African-American % of Total	2,165 24%	2,130 24%	2,231 24%	2,266 24%	2,275 23%	5%
Hispanic % of Total	382 4%	379 4%	473 5%	507 5%	707 7%	85%
Other Minority % of Total	731 8%	731 8%	835 9%	795 8%	1,070 11%	46%
White % of Total	4,599 51%	4,611 51%	4,766 50%	4,808 51%	5,384 54%	17%
Other/Unknown % of Total	1,097 12%	1,142 13%	1,163 12%	1,080 11%	593 6%	-46%
Total % of Total	8,974 100%	8,993 100%	9,468 100%	9,456 100%	10,029 100%	12%

Note: Other includes foreign students

\* Race/Ethnicity categories were changed to align with new federal guidelines. Starting in FY 2011, Other Minority includes American Indians, Pacific Islanders, Asians and students of multiple races.

Source: TSS

Table 4  
 University System of Maryland  
 Maryland Community College Transfers By Institution  
 FY 2007 - FY 2011

	FY 2007	FY 2008	FY 2009	FY 2010	FY 2011	Avg. Annual Change	FY 10-11 Δ Chg.
Bowie	281	302	292	279	238	-3.3%	-15%
Coppin	214	199	242	199	200	-1.3%	1%
Frostburg	283	313	323	344	354	4.6%	3%
Salisbury	601	524	657	632	673	2.3%	6%
Towson	1,630	1,729	1,889	1,607	2,017	4.4%	26%
UB	872	843	793	753	664	-5.3%	-12%
UMB	156	164	162	164	128	-3.9%	-22%
UMBC	961	1,052	1,059	1,181	1,267	5.7%	7%
UMCP	1,557	1,652	1,658	1,578	1,665	1.4%	6%
UMES	48	97	92	97	73	8.7%	-25%
UMUC	2,371	2,118	2,301	2,622	2,750	3.0%	5%
USM	8,974	8,993	9,468	9,456	10,029	2%	7%

Source: TSS

Table 5  
 University System of Maryland  
 Maryland Community College Transfers By Sending Institution  
 FY 2007 - FY 2011

	FY 2007	FY 2008	FY 2009	FY 2010	FY 2011	Avg. Annual Change	FY 10-11 Δ Chg.
Allegany	132	126	110	142	146	2.0%	3%
Anne Arundel	1,261	1,222	1,279	1,175	1,349	1.4%	15%
Baltimore City	437	450	452	438	364	-3.6%	-17%
Carroll	220	219	279	222	291	5.8%	31%
CCBC	1,386	1,417	1,408	1,405	1,430	0.6%	2%
Cecil	49	56	71	76	101	15.6%	33%
CSM	729	655	635	693	702	-0.8%	1%
Chesapeake	115	119	159	185	159	6.7%	-14%
Frederick	261	342	372	372	430	10.5%	16%
Garrett	38	40	54	70	54	7.3%	-23%
Hagerstown	136	153	173	170	200	8.0%	18%
Harford	422	480	475	481	540	5.1%	12%
Howard	606	628	675	671	716	3.4%	7%
Montgomery	1,996	2,041	2,287	2,241	2,409	3.8%	7%
Prince George's	940	880	872	889	912	-0.6%	3%
Wor-Wic	246	165	167	226	226	-1.7%	0%
Total	8,974	8,993	9,468	9,456	10,029	2%	6%

Source: TSS

Table 6  
 University System of Maryland  
 Maryland Community College Transfers By Institution  
 FY 2011

Sending Inst	Receiving Institution											USM
	Bowie	Coppin	Frostburg	Salisbury	Towson	UB	UMB	UMBC	UMCP	UMES	UMUC	
Allegany	2	0	114	1	7	3	1	2	1	0	15	146
Anne Arundel	21	10	28	89	262	97	13	222	223	1	383	1,349
Baltimore City	5	107	0	1	45	104	7	26	5	3	61	364
Carroll	0	0	0	22	130	25	2	45	25	0	42	291
CCBC	5	55	2	23	531	274	15	250	55	0	220	1,430
Cecil	0	0	6	24	35	2	4	12	8	1	9	101
Chesapeake	1	1	6	88	10	2	3	5	8	4	31	159
CSM	9	0	0	67	106	7	6	25	97	1	384	702
Frederick	2	0	36	44	110	6	7	41	83	2	99	430
Garrett	0	0	45	1	3	0	0	0	2	0	3	54
Hagerstown	0	1	66	20	29	0	0	3	23	0	58	200
Harford	2	3	8	34	283	45	6	44	49	0	66	540
Howard	10	8	9	38	145	33	16	205	130	2	120	716
Montgomery	29	4	27	65	249	55	43	339	834	25	739	2,409
Prince George's	152	11	7	13	57	7	4	46	117	3	495	912
Wor-Wic	0	0	0	143	15	4	1	2	5	31	25	226
<b>Total</b>	<b>238</b>	<b>200</b>	<b>354</b>	<b>673</b>	<b>2,017</b>	<b>664</b>	<b>128</b>	<b>1,267</b>	<b>1,665</b>	<b>73</b>	<b>2,750</b>	<b>10,029</b>

Source: TSS

Table 7  
 University System of Maryland  
 Maryland Community College Transfer Student Program Area  
 FY 2007 - 2011

	FY 2007	FY 2008	FY 2009	FY 2010	FY 2011	FY 11 % of total	FY 07-11 Δ Chg.
Agric. & Nat. Res.	50	86	89	83	122	1%	144%
Arch. & Env'tl. Des.	0	3	0	0	0	0%	--
Area Studies	30	27	26	25	22	0%	-27%
Biological Sciences	374	443	483	458	400	4%	7%
Business Managmt.	2,224	2,115	2,333	2,182	2,221	22%	0%
Communications	347	356	375	388	394	4%	14%
Comp. & Info. Sci.	785	715	754	859	1,030	10%	31%
Education	624	621	704	746	785	8%	26%
Engineering	188	198	230	245	277	3%	47%
Fine & Applied Arts	194	222	242	267	307	3%	58%
Foreign Languages	39	62	56	54	47	0%	21%
Health Professions	565	596	626	576	661	7%	17%
Home Economics	49	43	46	34	28	0%	-43%
Law	122	112	110	98	108	1%	-11%
Letters	246	303	299	278	287	3%	17%
Mathematics	49	78	66	72	59	1%	20%
Physical Science	84	95	89	102	112	1%	33%
Psychology	491	513	514	542	641	6%	31%
Public Affairs	353	350	413	433	419	4%	19%
Social Sciences	1,030	1,060	1,073	1,241	1,238	12%	20%
Interdisciplinary Studies	276	250	299	282	300	3%	9%
Natural Sci. Tech.	7	8	5	3	3	0%	-57%
Undeclared	847	737	636	488	568	6%	-33%
<b>Total</b>	<b>8,974</b>	<b>8,993</b>	<b>9,468</b>	<b>9,456</b>	<b>10,029</b>	<b>100%</b>	<b>12%</b>

Source: TSS

Table 8  
 University System of Maryland  
 Maryland Community College Transfers Attendance Patterns  
 Fall 2006 - Fall 2010

All Transfer Students					
	Fall 2006	Fall 2007	Fall 2008	Fall 2009	Fall 2010
<b>Full-Time</b>					
N	3,954	3,672	4,479	4,294	4,783
%	66%	66%	70%	70%	70%
<b>Part-Time</b>					
N	2,051	1,872	1,947	1,867	2,032
%	34%	34%	30%	30%	30%
<b>Total</b>	<b>6,005</b>	<b>5,544</b>	<b>6,426</b>	<b>6,161</b>	<b>6,815</b>

African-American Transfer Students					
	Fall 2006	Fall 2007	Fall 2008	Fall 2009	Fall 2010
<b>Full-Time</b>					
N	754	730	861	848	849
%	53%	53%	58%	58%	57%
<b>Part-Time</b>					
N	667	643	635	620	637
%	47%	47%	42%	42%	43%
<b>Total</b>	<b>1,421</b>	<b>1,373</b>	<b>1,496</b>	<b>1,468</b>	<b>1,486</b>

White Transfer Students					
	Fall 2006	Fall 2007	Fall 2008	Fall 2009	Fall 2010
<b>Full-Time</b>					
N	2,301	2,040	2,547	2,430	2,849
%	73%	73%	76%	76%	76%
<b>Part-Time</b>					
N	866	750	818	780	913
%	27%	27%	24%	24%	24%
<b>Total</b>	<b>3,167</b>	<b>2,790</b>	<b>3,365</b>	<b>3,210</b>	<b>3,762</b>

Note: Attendance status is based upon the EIS file and only reflects students who transferred in the Fall term. The totals are less than reported elsewhere in this report.  
 Source: EIS and TSS

Table 9  
University System of Maryland  
Maryland Community College Transfer Student Level  
Fall 2006 - Fall 2010

**Number of Transfer Students**

All Transfer Students					
	Fall 2006	Fall 2007	Fall 2008	Fall 2009	Fall 2010
Freshmen	1,687	1,267	1,121	1,119	1,106
Sophomore	2,181	1,964	2,475	2,229	2,486
Junior	1,946	2,164	2,663	2,651	3,013
Senior	82	98	107	117	158
Unclassified	111	51	60	45	52
<b>Total</b>	<b>6,007</b>	<b>5,544</b>	<b>6,426</b>	<b>6,161</b>	<b>6,815</b>

**Percent of Transfer Students**

All Transfer Students					
	Fall 2006	Fall 2007	Fall 2008	Fall 2009	Fall 2010
Freshmen	28%	23%	17%	18%	16%
Sophomore	36%	35%	39%	36%	36%
Junior	32%	39%	41%	43%	44%
Senior	1%	2%	2%	2%	2%
Unclassified	2%	1%	1%	1%	1%
<b>Total</b>	<b>100%</b>	<b>100%</b>	<b>100%</b>	<b>100%</b>	<b>100%</b>

**African-American Transfer Students**

African-American Transfer Students					
	Fall 2006	Fall 2007	Fall 2008	Fall 2009	Fall 2010
Freshmen	521	391	371	368	377
Sophomore	408	419	481	471	461
Junior	428	510	597	578	593
Senior	29	33	30	33	43
Unclassified	35	20	17	18	12
<b>Total</b>	<b>1,421</b>	<b>1,373</b>	<b>1,496</b>	<b>1,468</b>	<b>1,486</b>

**African-American Transfer Students**

African-American Transfer Students					
	Fall 2006	Fall 2007	Fall 2008	Fall 2009	Fall 2010
Freshmen	37%	28%	25%	25%	25%
Sophomore	29%	31%	32%	32%	31%
Junior	30%	37%	40%	39%	40%
Senior	2%	2%	2%	2%	3%
Unclassified	2%	1%	1%	1%	1%
<b>Total</b>	<b>100%</b>	<b>100%</b>	<b>100%</b>	<b>100%</b>	<b>100%</b>

**White Transfer Students**

White Transfer Students					
	Fall 2006	Fall 2007	Fall 2008	Fall 2009	Fall 2010
Freshmen	742	545	505	489	469
Sophomore	1,269	1,052	1,411	1,221	1,432
Junior	1,076	1,126	1,381	1,423	1,763
Senior	34	47	46	57	69
Unclassified	46	20	22	20	29
<b>Total</b>	<b>3,167</b>	<b>2,790</b>	<b>3,365</b>	<b>3,210</b>	<b>3,762</b>

**White Transfer Students**

White Transfer Students					
	Fall 2006	Fall 2007	Fall 2008	Fall 2009	Fall 2010
Freshmen	23%	20%	15%	15%	12%
Sophomore	40%	38%	42%	38%	38%
Junior	34%	40%	41%	44%	47%
Senior	1%	2%	1%	2%	2%
Unclassified	1%	1%	1%	1%	1%
<b>Total</b>	<b>100%</b>	<b>100%</b>	<b>100%</b>	<b>100%</b>	<b>100%</b>

Note: Attendance status is based upon the EIS file and only reflects students who transferred in the Fall term. The totals are less than reported elsewhere in this report.

Source: EIS and TSS



Table 10  
 University System of Maryland  
 Maryland Community College Transfer Student Four-Year Graduation Rates  
 FY 2001 - 2010 Cohorts

<b>Number of Community College Transfers</b>					
	Cohort Size	Graduation Rates			
		2-year	3-year	4-year	5-year
<b>USM</b>					
FY 2001	6,963	659	2,444	3,538	4,052
FY 2002	7,179	730	2,422	3,586	4,175
FY 2003	7,063	644	2,447	3,598	4,095
FY 2004	7,706	769	2,733	3,959	4,487
FY 2005	8,048	821	2,696	3,888	4,437
FY 2006	8,526	890	2,987	4,210	4,676
FY 2007	8,974	920	3,004	4,299	4,843
FY 2008	8,993	969	3,188	4,525	
FY 2009	9,468	1,134	3,519		
FY 2010	9,456	1,114			
<b>USM w/out UMUC</b>					
FY 2001	5,718	587	2,190	3,154	3,570
FY 2002	5,925	666	2,200	3,218	3,706
FY 2003	5,626	563	2,170	3,166	3,570
FY 2004	5,950	661	2,369	3,401	3,807
FY 2005	6,190	720	2,354	3,343	3,770
FY 2006	6,471	794	2,647	3,716	4,089
FY 2007	6,603	809	2,660	3,791	4,206
FY 2008	6,875	878	2,867	4,019	
FY 2009	7,167	1,004	3,101		
FY 2010	6,834	983			
<b>Bowie</b>					
FY 2001	301	36	107	148	165
FY 2002	377	43	121	181	202
FY 2003	340	33	109	166	198
FY 2004	264	25	90	138	160
FY 2005	453	29	89	149	185
FY 2006	290	17	77	130	154
FY 2007	281	29	84	133	159
FY 2008	302	26	81	127	
FY 2009	292	16	72		
FY 2010	279	16			
<b>Coppin</b>					
FY 2001	137	8	33	48	51
FY 2002	180	12	36	71	84
FY 2003	140	6	24	43	53
FY 2004	132	8	24	43	57
FY 2005	197	12	54	77	91
FY 2006	219	4	33	74	89
FY 2007	214	7	35	60	80
FY 2008	199	18	51	80	
FY 2009	242	15	40		
FY 2010	199	18			

<b>Percent Graduating</b>				
	Graduation Rates			
	2-year	3-year	4-year	5-year
<b>USM</b>				
FY 2001	9%	35%	51%	58%
FY 2002	10%	34%	50%	58%
FY 2003	9%	35%	51%	58%
FY 2004	10%	35%	51%	58%
FY 2005	10%	33%	48%	55%
FY 2006	10%	35%	49%	55%
FY 2007	10%	33%	48%	54%
FY 2008	11%	35%	50%	
FY 2009	12%	37%		
FY 2010	12%			
<b>USM w/out UMUC</b>				
FY 2001	10%	38%	55%	62%
FY 2002	11%	37%	54%	63%
FY 2003	10%	39%	56%	63%
FY 2004	11%	40%	57%	64%
FY 2005	12%	38%	54%	61%
FY 2006	12%	41%	57%	63%
FY 2007	12%	40%	57%	64%
FY 2008	13%	42%	58%	
FY 2009	14%	43%		
FY 2010	14%			
<b>Bowie</b>				
FY 2001	12%	36%	49%	55%
FY 2002	11%	32%	48%	54%
FY 2003	10%	32%	49%	58%
FY 2004	9%	34%	52%	61%
FY 2005	6%	20%	33%	41%
FY 2006	6%	27%	45%	53%
FY 2007	10%	30%	47%	57%
FY 2008	9%	27%	42%	
FY 2009	5%	25%		
FY 2010	6%			
<b>Coppin</b>				
FY 2001	6%	24%	35%	37%
FY 2002	7%	20%	39%	47%
FY 2003	4%	17%	31%	38%
FY 2004	6%	18%	33%	43%
FY 2005	6%	27%	39%	46%
FY 2006	2%	15%	34%	41%
FY 2007	3%	16%	28%	37%
FY 2008	9%	26%	40%	
FY 2009	6%	17%		
FY 2010	9%			

Table 10  
 University System of Maryland  
 Maryland Community College Transfer Student Four-Year Graduation Rates  
 FY 2001 - 2010 Cohorts

<b>Number of Community College Transfers</b>					
	Cohort Size	Graduation Rates			
		2-year	3-year	4-year	5-year
<b>Frostburg</b>					
FY 2001	307	39	123	170	197
FY 2002	333	41	136	202	234
FY 2003	335	41	119	176	198
FY 2004	285	33	106	152	165
FY 2005	268	26	104	144	160
FY 2006	277	37	112	152	172
FY 2007	283	41	120	165	181
FY 2008	313	61	150	199	
FY 2009	323	68	147		
FY 2010	344	61			
<b>Salisbury</b>					
FY 2001	485	52	226	321	347
FY 2002	522	63	197	308	361
FY 2003	559	49	233	353	390
FY 2004	519	66	224	331	363
FY 2005	513	50	202	314	348
FY 2006	569	61	253	365	402
FY 2007	601	57	251	371	402
FY 2008	524	76	270	361	
FY 2009	657	100	319		
FY 2010	632	99			
<b>Towson</b>					
FY 2001	1,237	116	495	685	777
FY 2002	1,347	118	489	734	846
FY 2003	1,214	128	550	763	851
FY 2004	1,335	149	594	837	907
FY 2005	1,429	167	607	863	960
FY 2006	1,483	178	666	909	1001
FY 2007	1,630	211	706	1027	1116
FY 2008	1,729	223	758	1077	
FY 2009	1,889	274	871		
FY 2010	1,607	258			
<b>UB</b>					
FY 2001	550	78	209	254	288
FY 2002	527	67	204	266	298
FY 2003	490	56	191	243	274
FY 2004	616	67	216	285	324
FY 2005	677	70	206	280	330
FY 2006	902	108	316	412	464
FY 2007	872	94	288	389	448
FY 2008	843	85	282	402	
FY 2009	793	76	290		
FY 2010	753	82			

<b>Percent Graduating</b>				
	Graduation Rates			
	2-year	3-year	4-year	5-year
<b>Frostburg</b>				
FY 2001	13%	40%	55%	64%
FY 2002	12%	41%	61%	70%
FY 2003	12%	36%	53%	59%
FY 2004	12%	37%	53%	58%
FY 2005	10%	39%	54%	60%
FY 2006	13%	40%	55%	62%
FY 2007	14%	42%	58%	64%
FY 2008	19%	48%	64%	
FY 2009	21%	46%		
FY 2010	18%			
<b>Salisbury</b>				
FY 2001	11%	47%	66%	72%
FY 2002	12%	38%	59%	69%
FY 2003	9%	42%	63%	70%
FY 2004	13%	43%	64%	70%
FY 2005	10%	39%	61%	68%
FY 2006	11%	44%	64%	71%
FY 2007	9%	42%	62%	67%
FY 2008	15%	52%	69%	
FY 2009	15%	49%		
FY 2010	16%			
<b>Towson</b>				
FY 2001	9%	40%	55%	63%
FY 2002	9%	36%	54%	63%
FY 2003	11%	45%	63%	70%
FY 2004	11%	44%	63%	68%
FY 2005	12%	42%	60%	67%
FY 2006	12%	45%	61%	67%
FY 2007	13%	43%	63%	68%
FY 2008	13%	44%	62%	
FY 2009	15%	46%		
FY 2010	16%			
<b>UB</b>				
FY 2001	14%	38%	46%	52%
FY 2002	13%	39%	50%	57%
FY 2003	11%	39%	50%	56%
FY 2004	11%	35%	46%	53%
FY 2005	10%	30%	41%	49%
FY 2006	12%	35%	46%	51%
FY 2007	11%	33%	45%	51%
FY 2008	10%	33%	48%	
FY 2009	10%	37%		
FY 2010	11%			

Table 10  
 University System of Maryland  
 Maryland Community College Transfer Student Four-Year Graduation Rates  
 FY 2001 - 2010 Cohorts

<b>Number of Community College Transfers</b>					
	Cohort Size	Graduation Rates			
		2-year	3-year	4-year	5-year
<b>UMB</b>					
FY 2001	173	79	129	136	146
FY 2002	251	119	187	205	211
FY 2003	131	63	105	112	114
FY 2004	149	73	119	122	123
FY 2005	146	75	122	130	135
FY 2006	136	67	116	122	125
FY 2007	156	67	125	127	130
FY 2008	164	60	130	137	
FY 2009	162	63	115		
FY 2010	164	77			
<b>UMBC</b>					
FY 2001	1,067	71	330	512	602
FY 2002	1,120	79	316	483	593
FY 2003	1,094	48	316	504	593
FY 2004	1,040	73	315	509	608
FY 2005	1,030	83	324	502	578
FY 2006	947	70	304	480	515
FY 2007	961	69	307	453	527
FY 2008	1,052	89	329	498	
FY 2009	1,059	83	340		
FY 2010	1,181	83			
<b>UMCP</b>					
FY 2001	1,418	104	523	857	971
FY 2002	1,240	121	505	755	864
FY 2003	1,295	136	514	797	889
FY 2004	1,486	165	651	943	1,050
FY 2005	1,341	201	619	834	923
FY 2006	1,571	246	750	1041	1127
FY 2007	1,557	229	731	1046	1137
FY 2008	1,652	232	784	1088	
FY 2009	1,658	300	873		
FY 2010	1,578	280			
<b>UMES</b>					
FY 2001	43	4	15	23	26
FY 2002	28	3	9	13	13
FY 2003	28	3	9	9	10
FY 2004	124	2	30	41	50
FY 2005	136	7	27	50	60
FY 2006	77	6	20	31	40
FY 2007	48	5	13	20	26
FY 2008	97	8	32	50	
FY 2009	92	9	34		
FY 2010	97	9			

<b>Percent Graduating</b>				
	Graduation Rates			
	2-year	3-year	4-year	5-year
<b>UMB</b>				
FY 2001	46%	75%	79%	84%
FY 2002	47%	75%	82%	84%
FY 2003	48%	80%	85%	87%
FY 2004	49%	80%	82%	83%
FY 2005	51%	84%	89%	92%
FY 2006	49%	85%	90%	92%
FY 2007	43%	80%	81%	83%
FY 2008	37%	79%	84%	
FY 2009	39%	71%		
FY 2010	47%			
<b>UMBC</b>				
FY 2001	7%	31%	48%	56%
FY 2002	7%	28%	43%	53%
FY 2003	4%	29%	46%	54%
FY 2004	7%	30%	49%	58%
FY 2005	8%	31%	49%	56%
FY 2006	7%	32%	51%	54%
FY 2007	7%	32%	47%	55%
FY 2008	8%	31%	47%	
FY 2009	8%	32%		
FY 2010	7%			
<b>UMCP</b>				
FY 2001	7%	37%	60%	68%
FY 2002	10%	41%	61%	70%
FY 2003	11%	40%	62%	69%
FY 2004	11%	44%	63%	71%
FY 2005	15%	46%	62%	69%
FY 2006	16%	48%	66%	72%
FY 2007	15%	47%	67%	73%
FY 2008	14%	47%	66%	
FY 2009	18%	53%		
FY 2010	18%			
<b>UMES</b>				
FY 2001	9%	35%	53%	60%
FY 2002	11%	32%	46%	46%
FY 2003	11%	32%	32%	36%
FY 2004	2%	24%	33%	40%
FY 2005	5%	20%	37%	44%
FY 2006	8%	26%	40%	52%
FY 2007	10%	27%	42%	54%
FY 2008	8%	33%	52%	
FY 2009	10%	37%		
FY 2010	9%			

Table 10  
 University System of Maryland  
 Maryland Community College Transfer Student Four-Year Graduation Rates  
 FY 2001 - 2010 Cohorts

**Number of Community College Transfers**

	Cohort Size	Graduation Rates			
		2-year	3-year	4-year	5-year
UMUC					
FY 2001	1,245	72	254	384	482
FY 2002	1,254	64	222	368	469
FY 2003	1,437	81	277	432	525
FY 2004	1,756	108	364	558	680
FY 2005	1,858	101	342	545	667
FY 2006	2,055	96	340	494	587
FY 2007	2,371	111	344	508	637
FY 2008	2,118	91	321	506	
FY 2009	2,301	130	418		
FY 2010	2,622	131			

**Percent Graduating**

	Graduation Rates			
	2-year	3-year	4-year	5-year
UMUC				
FY 2001	6%	20%	31%	39%
FY 2002	5%	18%	29%	37%
FY 2003	6%	19%	30%	37%
FY 2004	6%	21%	32%	39%
FY 2005	5%	18%	29%	36%
FY 2006	5%	17%	24%	29%
FY 2007	5%	15%	21%	27%
FY 2008	4%	15%	24%	
FY 2009	6%	18%		
FY 2010	5%			

Source: MHEC TSS and DIS files

Table 11  
 University System of Maryland  
 Maryland Community College Transfer Student Four-Year Graduation Rates  
 FY 2008

Receiving Inst	All Transfer Students		African-American Transfer Students		White Transfer Students	
	Cohort N	Four-Year Graduation Rate	Cohort N	Four-Year Graduation Rate	Cohort N	Four-Year Graduation Rate
Bowie	302	42%	246	41%	27	48%
Coppin	199	40%	156	44%	0	NA
Frostburg	313	64%	25	24%	269	67%
Salisbury	524	69%	44	52%	440	71%
Towson	1,729	62%	176	50%	1,165	67%
UB	843	48%	270	35%	317	56%
UMB	164	84%	55	76%	74	85%
UMBC	1,052	47%	206	43%	549	53%
UMCP	1,652	66%	227	59%	856	67%
UMES	97	52%	43	53%	32	53%
UMUC	2,118	24%	682	20%	882	28%
USM	8,993	50%	2,130	38%	4,611	58%

Source: TSS and DIS