



**TOPIC:** SAT Percentile Distribution of First-Time Undergraduates

**COMMITTEE:** Education Policy

**DATE OF COMMITTEE MEETING:** March 28, 2012

**SUMMARY:** This report provides an overview of the 25<sup>th</sup> and 75<sup>th</sup> percentile combined fall 2011 SAT scores of entering freshmen. USM institutions enrolled over 11,000 freshmen this past fall. Generally, USM SAT scores were stable or improved over last fall for this entering class.

**ALTERNATIVE(S):** This report is for information only.

**FISCAL IMPACT:** This report is for information only.

**CHANCELLOR'S RECOMMENDATION:** This report is for information only.

---

COMMITTEE RECOMMENDATION: Received as information.      DATE: March 28, 2012

---

BOARD ACTION:

DATE:

---

SUBMITTED BY: Joseph F. Vivona (301) 445-1923

---



# **SAT PERCENTILE DISTRIBUTIONS OF FIRST-TIME UNDERGRADUATES FALL 2007 - 2011**

*Bowie State University (BSU)*  
*Coppin State University (CSU)*  
*Frostburg State University (FSU)*  
*Salisbury University (SU)*  
*Towson University (TU)*  
*University of Baltimore (UB)*  
*University of Maryland, Baltimore County (UMBC)*  
*University of Maryland, College Park (UMCP)*  
*University of Maryland Eastern Shore (UMES)*

**Office of the Chief Operating Officer and  
Vice Chancellor for Administration and Finance  
University System of Maryland Office  
March 2012**

**Background**

## **SAT Percentile Distributions of First-Time Undergraduates Fall 2007 - 2011**

The University System of Maryland institutions report SAT scores of first-time undergraduates to MHEC annually. The institutions report average SAT scores for the verbal and math sections, a verbal and math combined average score, and the 25<sup>th</sup> and 75<sup>th</sup> percentiles of the combined scores. The distributions include SAT scores for first-time, full-time, and part-time undergraduates at all USM institutions except UMB and UMUC. Included in this report are only the 25<sup>th</sup>-75<sup>th</sup> percentile combined math and critical reading scores to give decision-makers a sense of the score distributions for the middle 50 percent of first-time freshmen. For further information, contact Chad Muntz, [cmuntz@usmd.edu](mailto:cmuntz@usmd.edu) (301) 445-2737 or Rebecca Bell, [rbell@usmd.edu](mailto:rbell@usmd.edu) (301) 445-2779.

### **Highlights**

- In fall 2011, a total of 10,670 freshmen who enrolled at a USM institution reported SAT scores. This represented a decrease of 489 from fall 2010 (11,159). The decline in the number of SAT scores reported is consistent with the current decreasing trend of new freshmen enrollments as well as reflects the decreasing number of enrolled freshmen that provided SAT scores.
- Table 1 displays the combined SAT scores at the 25<sup>th</sup> and 75<sup>th</sup> percentiles for fall 2007 through fall 2011. Figure 1 depicts ranges for the fall 2011 distributions for each institution. Fifty percent of incoming freshmen received SAT scores in the range between the markers on the graph.
- Most USM institutions experienced stable combined 25<sup>th</sup>/75<sup>th</sup> percentile SAT scores between fall 2010 and fall 2011. Only Coppin, UMES, and TU increased both the 25<sup>th</sup>/75<sup>th</sup> scores.
- For the third year, four institutions (Salisbury, Towson, UMBC, and UMCP) reported that at least three-quarters of their freshmen class had combined SAT scores greater than 1,000.

### *Maryland Public High School Test-Taker Trends (College Board)*

- 38,428 Maryland public school students took the SATs in 2010-2011 – a 9.3% increase from the year prior according to the College Board. This was the second year of an increase in test takers.
- Average SAT scores for 2010-11 college bound students from Maryland public high schools decreased by 3 points in critical reading (492) and by 5 points in mathematics (497) over the 2010-11 average scores according to The College Board.

### *National Trends from the National Center for Education Statistics (IPEDS)*

- Nationally, USM institutions are competitive with respective peer institutions on the 25<sup>th</sup>/75<sup>th</sup> math and reading scores. Table 2 displays the most recent IPEDS data for fall 2010 SAT critical reading and mathematics scores. Highlighted are the USM institutions within alphabetical lists of their peer institutions.

## SAT Percentile Distributions of First-Time Undergraduates Fall 2007 - 2011

Table 1  
Trends in SAT 25<sup>th</sup> and 75<sup>th</sup> Percentile Scores  
Fall 2007 – Fall 2011

Institution	2007		2008		2009		2010		2011	
	25th	75th	25th	75th	25th	75th	25th	75th	25th	75th
UMCP	1210	1360	1190	1360	1220	1370	1220	1380	1220	1380
UMBC	1090	1280	1090	1280	1080	1270	1110	1290	1120	1280
SU	1030	1200	1040	1210	1060	1190	1050	1210	1090	1200
TU	1010	1160	990	1150	1000	1150	1000	1150	1010	1160
UB	950	1120	850	1030	830	1040	850	1025	840	1040
FSU	860	1060	870	1060	870	1040	880	1070	890	1060
BSU	800	930	800	950	800	940	820	940	820	940
CSU	790	900	800	890	810	930	790	910	810	920
UMES	730	900	742	900	760	910	770	920	790	940

NOTE: All scores include all first-time, full-time and part-time, degree and non-degree seeking students.

Source: MHEC Form S-11

**Figure 1**  
**University System of Maryland**  
**Fall 2011 SAT Percentiles**

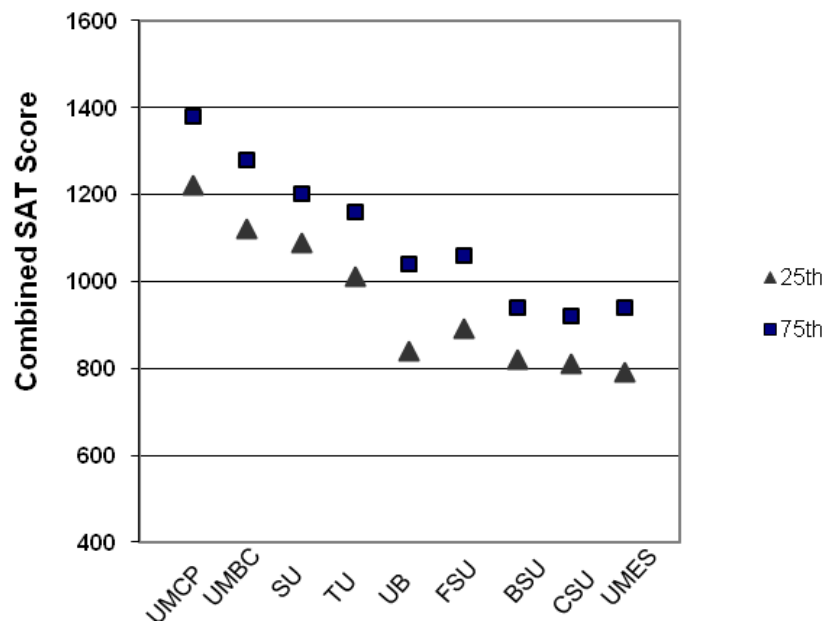


Table 2. Fall 2010 IPEDS SAT Quartiles of Peer Institutions by USM Institutions

<u>Bowie State and Institutional Peers</u>	Math		Reading	
	25th	75th	25th	75th
Alabama A & M University*	370	470	380	470
Alabama State University*	320	420	360	440
Auburn University at Montgomery**	-	-	-	-
<b>Bowie State University</b>	<b>400</b>	<b>480</b>	<b>410</b>	<b>480</b>
California State University-Bakersfield	390	520	390	500
Columbus State University	420	540	430	550
Indiana University-Southeast	420	530	420	530
New Jersey City University	400	490	300	480
Norfolk State University	400	470	390	470
Prairie View A & M University	380	460	370	450
Sul Ross State University	-	-	-	-
<i>Mean of Peers (excluding USM institution)</i>	<i>388</i>	<i>488</i>	<i>380</i>	<i>486</i>

<u>Coppin State and Institutional Peers</u>	Math		Reading	
	25th	75th	25th	75th
Albany State University	400	470	420	480
Alcorn State University*	390	460	390	480
Augusta State University	430	550	430	550
Cheyney University of Pennsylvania***	-	-	-	-
<b>Coppin State University</b>	<b>390</b>	<b>460</b>	<b>400</b>	<b>460</b>
Henderson State University*	500	560	380	620
Louisiana State University-Shreveport*	500	580	480	570
Nicholls State University*	440	610	450	570
University of North Carolina at Pembroke	430	510	410	500
Virginia State University	390	470	400	480
Western New Mexico University	-	-	-	-
<i>Mean of Peers (excluding USM institution)</i>	<i>435</i>	<i>526</i>	<i>420</i>	<i>531</i>

<u>Frostburg State and Institutional Peers</u>	Math		Reading	
	25th	75th	25th	75th
Bridgewater State University	470	560	460	550
Clarion University of Pennsylvania	420	530	420	520
East Stroudsburg University of Pennsylvania	450	540	440	520
<b>Frostburg State University</b>	<b>430</b>	<b>540</b>	<b>440</b>	<b>530</b>
Indiana University-South Bend	420	520	410	520
Rhode Island College	420	520	420	520
Sonoma State University	470	570	460	560
SUNY College at Plattsburgh	480	570	460	570
SUNY College at Potsdam***	-	-	-	-
University of Massachusetts-Dartmouth	490	590	470	570
Western Connecticut State University	450	540	450	540
<i>Mean of Peers (excluding USM institution)</i>	<i>452</i>	<i>549</i>	<i>443</i>	<i>541</i>

\* Institution reports both SAT and ACT scores in IPEDS, but the majority of students report ACT scores.

\*\* Institution only reports ACT scores in IPEDS.

\*\*\* Institution does not report SAT or ACT scores in IPEDS.

Note. The peer institutions displayed are based the MHEC's *Funding Guidelines Peer Performance Analysis* (March 2010).

Table 2 (cont.) Fall 2010 IPEDS SAT Quartiles of Peer Institutions by USM Institutions

<u>Salisbury Univ. and Institutional Peers</u>	Math		Reading	
	25th	75th	25th	75th
Bloomsburg University of Pennsylvania	460	560	450	540
Millersville University of Pennsylvania	480	580	480	570
<b>Salisbury University</b>	<b>530</b>	<b>610</b>	<b>520</b>	<b>600</b>
Sonoma State University	470	570	460	560
Southeast Missouri State University*	433	605	398	570
SUNY at Fredonia	510	600	500	590
SUNY College at Oswego	530	600	530	600
SUNY College at Plattsburgh	480	570	460	570
University of Massachusetts-Dartmouth	490	590	470	570
University of North Carolina-Wilmington	550	630	530	620
University of Northern Iowa*	483	600	468	618
<i>Mean of Peers (excluding USM institution)</i>	<i>492</i>	<i>592</i>	<i>479</i>	<i>583</i>

<u>Towson Univ. and Institutional Peers</u>	Math		Reading	
	25th	75th	25th	75th
Ball State University	490	580	480	580
California State University-Sacramento	430	550	410	530
East Carolina University	490	570	470	550
Eastern Michigan University*	450	580	440	580
James Madison University	530	630	520	610
Portland State University	460	580	470	590
<b>Towson University</b>	<b>500</b>	<b>590</b>	<b>490</b>	<b>570</b>
University of Massachusetts-Boston	460	570	440	550
University of North Carolina at Charlotte	490	590	470	550
University of Northern Iowa*	483	600	468	618
Western Kentucky University*	430	550	430	540
<i>Mean of Peers (excluding USM institution)</i>	<i>471</i>	<i>580</i>	<i>460</i>	<i>570</i>

<u>Univ. of Baltimore and Institutional Peers</u>	Math		Reading	
	25th	75th	25th	75th
Auburn University at Montgomery**	-	-	-	-
Citadel Military College of South Carolina	510	600	480	580
Governors State University***	-	-	-	-
New Jersey City University	400	490	300	480
Texas A & M University-Corpus Christi	430	540	420	530
<b>University of Baltimore</b>	<b>410</b>	<b>520</b>	<b>420</b>	<b>530</b>
University of Houston-Clear Lake***	-	-	-	-
University of Illinois at Springfield**	-	-	-	-
University of Michigan-Dearborn*	510	675	-	-
University of Wisconsin-Whitewater*	460	600	430	540
Western Connecticut State University	450	540	450	540
<i>Mean of Peers (excluding USM institution)</i>	<i>460</i>	<i>574</i>	<i>416</i>	<i>534</i>

\* Institution reports both SAT and ACT scores in IPEDS, but the majority of students report ACT scores.

\*\* Institution only reports ACT scores in IPEDS.

\*\*\* Institution does not report SAT or ACT scores in IPEDS.

Table 2 (cont.) Fall 2010 IPEDS SAT Quartiles of Peer Institutions by USM Institutions

<u>UM Baltimore County and Institutional Peers</u>	Math		Reading	
	25th	75th	25th	75th
Clemson University	580	670	550	640
Mississippi State University*	490	630	470	610
New Jersey Institute of Technology	540	650	470	590
Oklahoma State University-Main Campus*	520	630	490	600
University of Arkansas*	520	640	500	610
University of California-Riverside	480	620	450	570
University of California-Santa Cruz	520	640	510	630
<b>University of Maryland-Baltimore County</b>	<b>560</b>	<b>670</b>	<b>540</b>	<b>640</b>
University of Massachusetts Amherst	540	640	520	620
University of Rhode Island	470	580	470	570
University of Wyoming*	490	620	480	600
<i>Mean of Peers (excluding USM institution)</i>	<i>515</i>	<i>632</i>	<i>491</i>	<i>604</i>

<u>UM College Park and Institutional Peers</u>	Math		Reading	
	25th	75th	25th	75th
University of California-Berkeley	640	750	590	710
University of California-Los Angeles	590	720	560	680
University of Illinois at Urbana-Champaign*	680	770	530	660
<b>University of Maryland-College Park</b>	<b>610</b>	<b>710</b>	<b>580</b>	<b>680</b>
University of Michigan-Ann Arbor*	640	750	590	690
University of North Carolina at Chapel Hill	620	710	590	700
<i>Mean of Peers (excluding USM institution)</i>	<i>634</i>	<i>740</i>	<i>572</i>	<i>688</i>

<u>UM Eastern Shore and Institutional Peers</u>	Math		Reading	
	25th	75th	25th	75th
Alabama A & M University*	370	470	380	470
Albany State University	400	470	420	480
Alcorn State University*	390	460	390	480
California State University-Bakersfield	390	520	390	500
Fort Valley State University	349	498	355	502
North Carolina A & T State University	410	500	400	480
Prairie View A & M University	380	460	370	450
South Carolina State University	383	478	380	470
<b>University of Maryland Eastern Shore</b>	<b>380</b>	<b>460</b>	<b>390</b>	<b>460</b>
University of North Carolina at Pembroke	430	510	410	500
Virginia State University	390	470	400	480
<i>Mean of Peers (excluding USM institution)</i>	<i>389</i>	<i>484</i>	<i>390</i>	<i>481</i>

\* Institution reports both SAT and ACT scores in IPEDS, but the majority of students report ACT scores.

\*\* Institution only reports ACT scores in IPEDS.

\*\*\* Institution does not report SAT or ACT scores in IPEDS.

Note. The peer institutions displayed are based the MHEC's *Funding Guidelines Peer Performance Analysis* (March 2010).