



SUMMARY OF ITEM FOR ACTION,  
INFORMATION OR DISCUSSION

**TOPIC:** Overview of undergraduate enrollment, persistence, and success at the University System of Maryland.

**COMMITTEE:** Education Policy and Student Life

**DATE OF COMMITTEE MEETING:** March 13, 2013

**SUMMARY:** Three annual reports are included under this cover and will be discussed as part of this topic. The three reports are as follows:

- *SAT Percentile Distributions of First-Time Undergraduates;*
- *Retention and Graduation Rates of First-time Full-time Degree Seeking Undergraduates; and*
- *Transfer Students to the University System of Maryland: Patterns of Enrollment and Success.*

When looked at as a whole, the three reports provide a useful overview of undergraduate enrollment within the USM, including the various pipelines that feed undergraduate enrollment, the academic profile of incoming first-time students (as measured by SAT scores), student success and persistence after enrollment, and, in the end, bachelor degree attainment.

For new freshmen, a key admissions component correlated with student success is the entering students' SAT scores. The *SAT Percentile Distributions of First-Time Undergraduates* report presents central tendency data for the SAT scores at each USM institution. The report also provides a context for interpreting those scores by comparing institutional SAT data with those at peer institutions.

The second report, *Retention and Graduation Rates of First-time Full-time Degree Seeking Undergraduates*, examines the level of academic success—as measured by retention and graduation rates—achieved by first-time, full-time students at USM institutions. Key trends in student enrollment and success are broken out and analyzed at both the institutional and Systemwide level.

The third report, *Transfer Students to the University System of Maryland: Patterns of Enrollment and Success*, examines progress within this increasingly important pipeline for enrollment growth. Institutional enrollment and success trends among the transfer population are analyzed and displayed, including changes in the proportion of transfer students to first-time students on USM campuses. Key factors that contribute to transfer success, such as credit attainment prior to transfer and full-time attendance, are also analyzed. Finally, for the first time, data showing the level of success Maryland Community College transfer students are having at USM's regional centers at Shady Grove and Hagerstown are analyzed.

**ALTERNATIVE(S):** This report is for information only.

**FISCAL IMPACT:** This report is for information only.

**CHANCELLOR'S RECOMMENDATION:** This report is for information only.

COMMITTEE RECOMMENDATION:

DATE:

BOARD ACTION:

DATE:

SUBMITTED BY: Joseph F. Vivona (301) 445-1923



# **TRANSFER STUDENTS TO THE UNIVERSITY SYSTEM OF MARYLAND:**

*Patterns of Enrollment and Success  
Updated through FY 2012*

*Bowie State University (BSU)  
Coppin State University (CSU)  
Frostburg State University (FSU)  
Salisbury University (SU)  
Towson University (TU)  
University of Baltimore (UB)  
University of Maryland, Baltimore (UMB)  
University of Maryland, Baltimore County (UMBC)  
University of Maryland, College Park (UMCP)  
University of Maryland Eastern Shore (UMES)  
University of Maryland University College (UMUC)*

**Office of the Chief Operating Officer and  
Vice Chancellor for Administration and Finance  
University System of Maryland  
March 2013**



**Highlights:**

- 21,288 students transferred to a USM institution in FY 2012, up 19% since FY 2008. Approximately 52 percent (11,033) of all transfers came from a Maryland community college.
- The number of Maryland community college students who transferred in FY 2012 increased by 10% (1,000+) over the FY 2011 level.
- Over the past five years (FY 2008 - FY 2012) the number of Maryland community college students transferring to a USM institution has increased by nearly 25 percent (+2,040).
- While six of Maryland's 16 public community colleges – all within the Baltimore-DC corridor – supplied over 60% of the community college transfers entering a USM institution in FY 2012, that number was down 10% from the FY 2011 level of 70%. This trend is expected to continue since the most rapid growth in the number of students transferring to a USM institution is occurring at community colleges outside the Baltimore-DC corridor (Frederick, Cecil, Harford, Carroll, Chesapeake, and Southern Maryland).
- The largest proportion of Maryland community college students who transferred to USM institutions in FY 2012 enrolled in the following program areas: business and management (22%), social sciences (11%), computer and information science (11%), education (8%), and the health professions (7%). This was consistent with historical trends.
- 72% of Maryland community college students who transferred to USM institutions in FY 2012 enrolled as full-time students (based on fall 2011 enrollments). Although it is decreasing, a gap still remains between African-American transfer students who enroll full time (60%) and white transfer students (76% of who enroll full-time after transferring.)
- 82% of Maryland community college students who transferred to a USM institution in FY 2012 entered with either sophomore or junior status (based on fall 2011 enrollment).
- 51% of the FY 2009 cohort of Maryland community college transfers to USM institutions graduated within four years of transferring (regardless of whether they attended full-time or part-time).
- 65% of the FY 2009 cohort of Maryland community college transfers to USM institutions who attended full-time graduated within four years of transferring. This was a rate of success comparable to the fall 2006 full-time, first-time new freshmen cohort six-year graduation rate of 60% graduating at the same institution of entry.
- A first ever analysis of graduation rates for Maryland Community College students enrolled at USM's Regional Higher Education Centers indicated that 4-year graduation rates for students who started in fall 2008 were 65% for Hagerstown and 74% for Shady Grove, matching and surpassing, respectively, the success rates of full-time transfers to USM institutions overall.

## **Background**

The following report provides data on demographic characteristics, enrollment status, enrollment trends, and graduation rates for transfer students to institutions in the University System of Maryland. Most of the data supplied in this report were extracted from the 2012 Transfer Student System (TSS) data file.<sup>1</sup> The TSS was originally designed by the Maryland Higher Education Commission (MHEC), the University System of Maryland (USM), and the Maryland community colleges to provide feedback to the community colleges about the success of their students. The TSS from USM institutions also collects data on students who transferred across USM institutions, from other Maryland institutions, and from out-of-state institutions. Those data are presented in tables that appear in the appendix of this report.

The data affirm that transfer students are a vital and growing segment of our undergraduate population. Because all TSS data are continuously updated by the institutions, the information contained in this report is not comparable to information found in reports from prior years. The information in this report reflects the most recent updates to data from FY 2008 through FY 2012.

New in this report are data about the retention and graduation success of Maryland Community College transfers attending the USM's Regional Centers at Shady Grove and Hagerstown. These first time data show the significant contribution the regional centers provide for local transfer students.

For further information, please contact Chad Muntz, [cmuntz@usmd.edu](mailto:cmuntz@usmd.edu), 301-445-2737 or Becky Bell, [rbell@usmd.edu](mailto:rbell@usmd.edu), 301-405-2779.

## **First-time Transfers to USM<sup>2</sup>**

First-time transfers make up a substantial part of newly enrolled undergraduate students at USM institutions. Over 21,200 students transferred into USM institutions in FY 2012 (including summer 2011, fall 2011, and spring 2012 semesters), and was an increase of 1,000 transfers from FY 2011. Half of the students who transferred to a USM institution came from a Maryland community college.

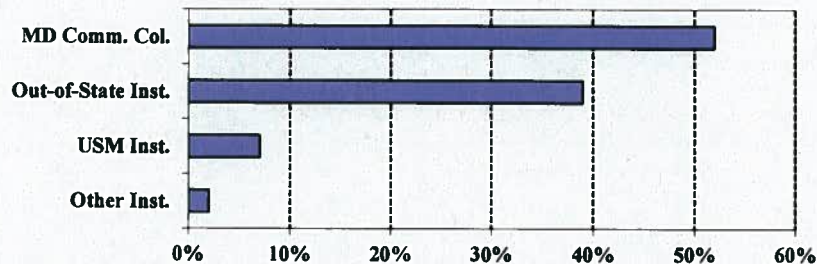
---

<sup>1</sup> The TSS data files were matched with the fall Enrollment Information System (EIS) data files to provide additional information on enrollment status and student level upon entry.

<sup>2</sup> First-time transfers are defined as students transferring for the first time from a higher education institution with 12 or more credits.



**Figure 1**  
**Transfers to USM Institutions By Source of Transfer FY 2011**



### **First-Time Community College Transfers to the USM in FY 2012**

#### ***Enrollment Growth***

Over 11,000 new students transferred from a Maryland community college to a USM institution in FY 2012. Over the past 5 years (FY 2008 – FY 2012), the number of new Maryland community college transfer students has grown 24 percent from 8,933 to 11,033. Those institutions experiencing the most growth in transfers over the past five years were UMUC (+879), Towson (+702), UMBC (+316), Salisbury (+212), Frostburg (+66), UMCP (+43), Coppin (+37), and Bowie (+13). UB (-189), UMB (-27) and UMES (-11) had fewer community college transfers in FY 2012 than FY 2008.

#### ***Selected Demographics***

African-American students made up 24 percent of the transfer students from Maryland community colleges entering USM institutions in FY 2012, while Hispanic students comprised nine percent (9%). However, this latter group easily represented the fastest growing segment of the USM community college transfer population, growing 153% over the past five years. Finally, the proportion of community college transfers who were white decreased, and, for the first time, represented less than half (49%) of the community college transfers entering a USM institution. White transfers have steadily decreased as a proportion of the community college student body since FY 2000, when they represented 61% of community college.

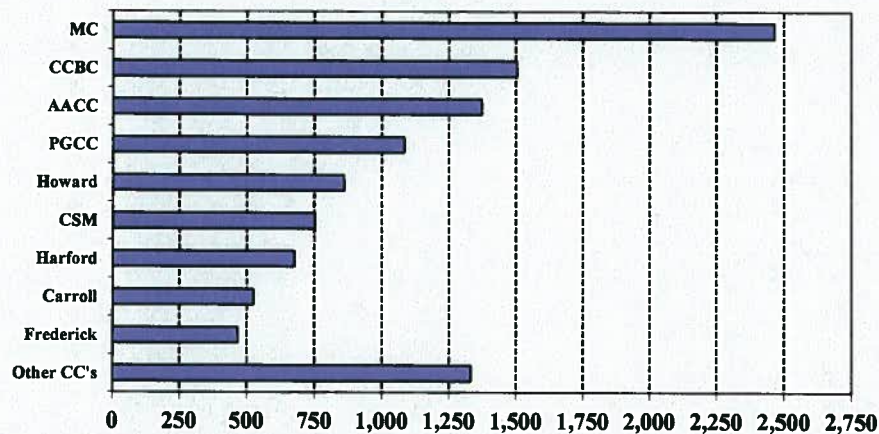
Approximately 56% of Maryland community college students transferring to USM institutions were female. The average age of the community college transfer students to USM institutions was significantly above that of new freshmen. The average age among Maryland community college transfers was 27 compared to an average age of 19 among new freshmen. However, almost 56% of community college transfer students were between 18-24 years of age.

#### ***Transfer and Enrollment Patterns***

Six out of ten Maryland community college students transferring to the USM in FY 2012 came from just six of the state's 16 public two-year institutions, all located within or close to the

Baltimore-Washington Region (See Figure 2). However, the proportion of transfer students coming from institutions in that region of the state is dropping (last year it was seven out of ten). Community college transfers from the outskirts of the Baltimore-Washington region (Frederick, Cecil, Harford, Carroll, Hagerstown, the College of Southern Maryland, and Chesapeake) currently represent just 26% of the Maryland community college transfers but have increased their overall share by 44% over the past five years. In FY 2012, only Baltimore City Community College and Cecil saw decreases in the number of students transferring to a USM institution. This drop has been greatest for Baltimore City, which has seen a steady drop of nearly 23% in the number of transfers coming from it over the past five years.

**Figure 2**  
**Maryland Community College Transfers to USM Institutions**  
**FY 2012**



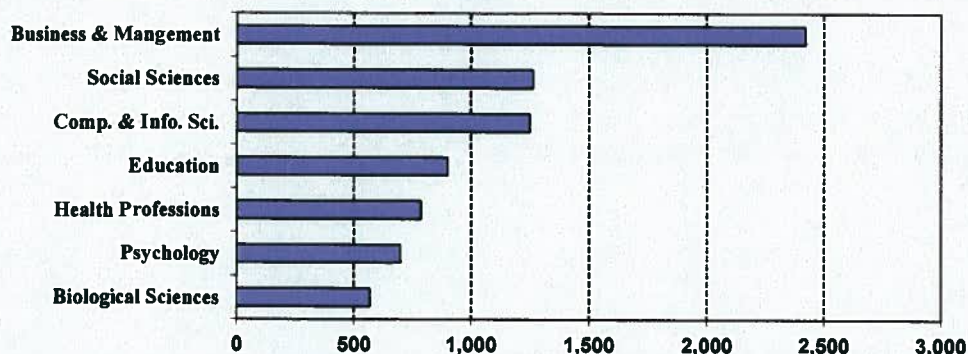
The five USM institutions enrolling the largest share of new Maryland community college transfers were: UMUC (2,997), Towson (2,430), UMCP (1,695), UMBC (1,368), and Salisbury (736). Together, these five institutions enrolled 84 percent of all Maryland community college transfers to the USM in FY 2012.

### ***Programs of Study***

Of the Maryland community college students who transferred to a USM institution in FY 2012, 22% entered programs in business and management, 11% in the social sciences, 11% in computer and information science, 8% in education, 7% in the health professions, 6% in Psychology, and 5% in Biological Sciences. Six percent of these students had an undeclared major.



**Figure 3**  
**Maryland Community College Transfers to USM Institutions**  
**By Program Area at Time of Transfer**  
**FY 2012**



### ***Fall Attendance Patterns and Student Level***

Sixty-seven percent of all Maryland community college students who transferred to USM institutions in FY 2012 did so in the fall 2011 semester. Of those community college transfer students who entered in fall 2011, 72 percent attended on a full-time basis, an increase of two percent. A positive trend has been the percentage of African-American transfer students attending full-time, which increased to 60 percent but remained below the 76 percent level for white transfer students.

The largest proportion of Maryland community college students who transferred to USM institutions in FY 2012 entered as either sophomores or juniors; however the 78% of transfers entering at the sophomore/junior level was a slight decrease from the 80% who did so in FY 2011. For Fiscal 2012, 70% of African-American community college transfer students entered as sophomores or juniors compared to 82% of white students in fall 2010. The percentage of students entering with more credits is a positive one because it contributes to decreased time to degree and increased efficiency.

### ***Graduation Rates***

Of those Maryland community college transfers who enrolled in FY 2009, 51% graduated within four years at the same institution as entry. The graduation rate of Maryland community college transfers to the USM after four years was below that of first-time, full-time new freshmen after six years (the 6-year graduation rate of the fall 2006 new freshmen cohort was 60% at same institution as entry). However, given the differing entering attendance status for transfers (which includes those attending part time), this lower graduation rate is to be expected.

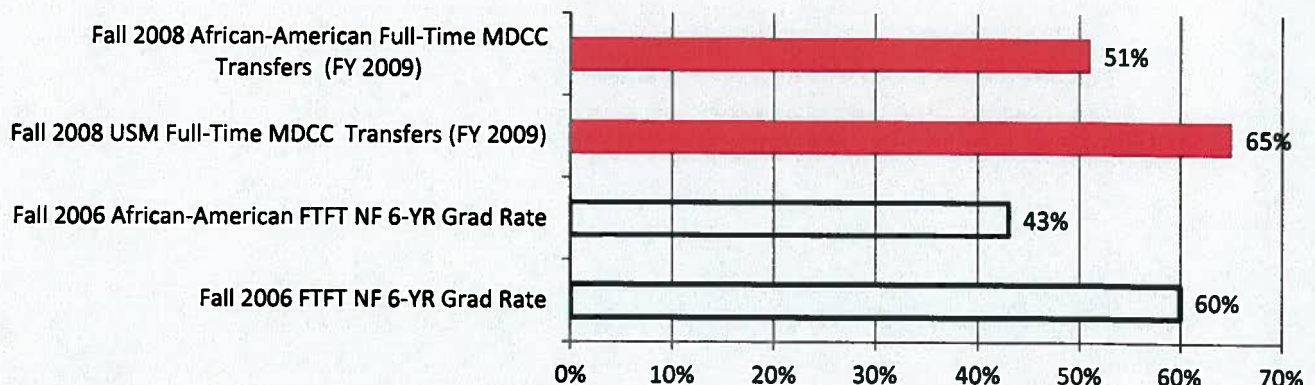
Attendance status appeared to impact graduation rates for transfer students significantly. Transfers students attending part time made up 30% of the fall 2008 student cohort in FY 2009, a decrease from 34% for the FY 2008 cohort. If the four-year graduation rate excluded these part-time students, however, and was calculated using only those transfers who attended full time, the graduation rate was higher than for the new transfer cohort (65% for the fall 2008 full time

Maryland community college transfers versus 60% of the fall 2006 full time new freshmen six year rate at the institution of first entry).

Of those African-American community college transfers who enrolled at a USM institution in FY 2009, 37% graduated within four years. In total, 42% of the African-American community college transfers attended part-time, of which the largest proportion are UMUC students. After removing part-time students, the fall 2008 African-American transfer 4-year graduation rate increased to 51%, which was eight points higher than the fall 2006 first-time full-time African American new freshmen cohort at institution of first entry.

The lower overall community college transfer graduation rate is mostly explained by the large numbers of part-time community college transfer students (Appendix Table 10). Although there has been a significant portion of Maryland Community College Students attending part time, in recent years, the portion of full time students has been increasing. This is encouraging because the future time-to-degree ratio for students will be positively affected by the addition of more full-time transfer students, as well as other improvements in efficiency that contribute to increases in degree production.

**Figure 4**  
**Maryland Community College Transfers and USM New Freshmen Graduation Rates**  
**At Institution of First Entry**  
**(New Transfer 4 Year VS New Freshmen 6 Year)**



***Regional Centers—Universities at Shady Grove and USM-Hagerstown***

For the first time, sufficient data were available to look at the four-year graduation rates of Maryland community college transfers that enroll in programs at the USM regional centers. The first cohort available to measure the four-year graduation rate was the FY 2009 group of transfers who registered for at least one course at one of the regional centers. For the purposes of



this analysis, the regional center cohort was defined as any Maryland community college transfer who enrolled in at least one regional center course in the fall 2008 semester. The retention and graduation rates for these students are found in Figure 5 below. It is important to note that the students identified in these cohorts are a subset of the total population of 11,033 Maryland community college transfers who have been identified and discussed earlier in this report. It is also important to note that the regional center students are, and will continue to be, included in the institutional numbers presented in previous sections of this report, as they have been in all previous transfer reports.

**Figure 5**  
**USM Regional Centers**

**Maryland Community College Transfer Retention and Graduation Rates**

**HAGERSTOWN**

Fiscal Year	Fall Start	Cohort Size*	Retention Rates at Hagerstown			Graduation Rates Any USM Institution		
			2nd Yr	3rd Yr	4th Yr	2-Year	3-Year	4-Year
FY2009	2008	46	72%	28%	13%	37%	50%	65%
FY2010	2009	40	78%	23%	13%	45%	68%	
FY2011	2010	66	65%	21%		41%		
FY2012	2011	70	74%					

**SHADY GROVE**

Fiscal Year	Fall Start	Cohort Size*	Retention Rates at Shady Grove			Graduation Rates Any USM Institution		
			2nd Yr	3rd Yr	4th Yr	2-Year	3-Year	4-Year
FY2009	2008	380	80%	21%	7%	46%	68%	74%
FY2010	2009	470	79%	26%	26%	44%	67%	
FY2011	2010	428	72%	25%		46%		
FY2012	2011	530	71%					

\* Note: to be included in a cohort, the student officially transferred in the same fiscal year as the first fall enrollment at the regional center and as reported in MHEC TSS.

As the data show, the numbers of Maryland community college transfers at the two regional centers have been growing. The second-year retention rates at the centers show fluctuating results for Hagerstown and a decreasing trend for Shady Grove. However, subsequent analysis, not shown here, has found that some of those transfers were taking courses exclusively at the home campus and missed in the regional center data for the subsequent fall semester. Thus, the retention remains strong for the cohort overall and demonstrates the mobility of the transfer student.

The graduation rates are also encouraging, with over 40 percent of the cohort graduating within two years for both Hagerstown and Shady Grove (compared to a rate of 11% for transfers at USM campuses overall). The first four-year graduation rate available for analysis was the FY

2009 cohort of students that began in fall 2008. It showed a 65% rate for Hagerstown and 74% for Shady Grove. This initial finding means that students taking courses at the regional centers are graduating at the same or higher rates than first-time, full-time new freshmen for USM institutions overall (the fall 2006 cohort for first-time, full-time freshmen was 65% USM institutions overall) and at the same or, in the case of Shady Grove, a higher rate than for those Maryland community college transfers attending full time (the rate for the USM as a whole was 65%). Thus, the regional centers have increased not just the capacity of the USM but its overall efficiency as well.



## **APPENDIX**

**Table 1**  
**University System of Maryland Transfer Students**  
**By Type of Institution Transferred From**  
**By Receiving Institution**  
**FY 2012**

**Number of Transfers**

	MD Comm Coll.	USM Inst.	MSU or SMCM	MD Private	Out-of-State	Total Transfers
Bowie	315	85	18	9	258	685
Coppin	236	52	18	16	79	401
Frostburg	379	25	6	9	247	666
Salisbury	736	82	4	22	152	996
Towson	2,430	75	9	39	512	3,065
UB	654	87	19	26	193	979
UMB	137	233	21	24	645	1,060
UMBC	1,368	67	4	10	145	1,594
UMCP	1,695	126	13	28	344	2,206
UMES	86	30	3	3	0	122
UMUC	2,997	543	68	74	5,832	9,514
USM	11,033	1,405	183	260	8,407	21,288

**Percent of Transfers**

	MD Comm Coll.	USM Inst.	MSU or SMCM	MD Private	Out-of-State	Total Transfers
Bowie	46%	12%	3%	1%	38%	100%
Coppin	59%	13%	4%	4%	20%	100%
Frostburg	57%	4%	1%	1%	37%	100%
Salisbury	74%	8%	0%	2%	15%	100%
Towson	79%	2%	0%	1%	17%	100%
UB	67%	9%	2%	3%	20%	100%
UMB	13%	22%	2%	2%	61%	100%
UMBC	86%	4%	0%	1%	9%	100%
UMCP	77%	6%	1%	1%	16%	100%
UMES	70%	25%	2%	2%	0%	100%
UMUC	32%	6%	1%	1%	61%	100%
USM	52%	7%	1%	1%	39%	100%

Note: Transfers are the number of undergraduates enrolled for the first time with 12 or more credits.

MSU=Morgan State University; SMCM=St. Mary's College of Maryland

Source: TSS



**Table 2**  
**University System of Maryland**  
**First-time Transfers to USM Institutions**  
**FY 2008 - FY 2012**

	FY 2008	FY 2009	FY 2010	FY 2011	FY 2012	FY 08-12 Δ Chg.
<b>MD Comm College</b>	8,933	9,468	9,456	10,029	11,033	24%
<b>% of Total</b>	50%	51%	50%	52%	52%	
<b>USM Institutions</b>	1,217	1,279	1,378	1,432	1,405	15%
<b>% of Total</b>	7%	7%	7%	7%	7%	
<b>MSU &amp; SMCM</b>	143	154	135	139	183	28%
<b>% of Total</b>	1%	1%	1%	1%	1%	
<b>Md Private Inst.</b>	185	181	209	194	260	41%
<b>% of Total</b>	1%	1%	1%	1%	1%	
<b>Out-of-State Inst. &amp; Unk</b>	7,460	7,547	7,656	7,448	8,407	13%
<b>% of Total</b>	42%	41%	41%	39%	39%	
<b>Total</b>	17,938	18,629	18,834	19,242	21,288	19%
<b>% of Total</b>	100%	100%	100%	100%	100%	

MSU=Morgan State University; SMCM=St. Mary's College of Maryland

Source: TSS

**Table 3**  
**University System of Maryland**  
**Maryland Community College Transfers by Ethnicity**  
**FY 2008 - FY 2012**

	FY 2008	FY 2009	FY 2010	FY 2011*	FY 2012*	FY 08-12 Δ Chg.
<b>African-American</b>	2,130	2,231	2,266	2,275	2,613	23%
<b>% of Total</b>	24%	24%	24%	23%	24%	
<b>Hispanic</b>	379	473	507	707	957	153%
<b>% of Total</b>	4%	5%	5%	7%	9%	
<b>Other Minority</b>	731	835	795	1,070	1,283	76%
<b>% of Total</b>	8%	9%	8%	11%	12%	
<b>White</b>	4,611	4,766	4,808	5,384	5,396	17%
<b>% of Total</b>	51%	50%	51%	54%	49%	
<b>Other/Unknown</b>	1,142	1,163	1,080	593	784	-31%
<b>% of Total</b>	13%	12%	11%	6%	7%	
<b>Total</b>	8,993	9,468	9,456	10,029	11,033	23%
<b>% of Total</b>	100%	100%	100%	100%	100%	

Note: Other includes foreign students

\* Race/Ethnicity categories were changed to align with new federal guidelines. Starting in FY 2011, Other Minority includes American Indians, Pacific Islanders, Asians and students of multiple races.

Source: TSS

Table 4  
University System of Maryland  
Maryland Community College Transfers By Institution  
FY 2008 - FY 2012

	FY 2008	FY 2009	FY 2010	FY 2011	FY 2012	Avg. Annual Change	FY 11-12 Δ Chg.
Bowie	302	292	279	238	315	0.8%	32%
Coppin	199	242	199	200	236	3.5%	18%
Frostburg	313	323	344	354	379	3.9%	7%
Salisbury	524	657	632	673	736	7.0%	9%
Towson	1,729	1,889	1,607	2,017	2,430	7.0%	20%
UB	843	793	753	664	654	-5.0%	-2%
UMB	164	162	164	128	137	-3.5%	7%
UMBC	1,052	1,059	1,181	1,267	1,368	5.4%	8%
UMCP	1,652	1,658	1,578	1,665	1,695	0.5%	2%
UMES	97	92	97	73	86	-2.4%	18%
UMUC	2,118	2,301	2,622	2,750	2,997	7.2%	9%
USM	8,993	9,468	9,456	10,029	11,033	4.2%	10%

Source: TSS

Table 5  
University System of Maryland  
Maryland Community College Transfers By Sending Institution  
FY 2008 - FY 2012

	FY 2008	FY 2009	FY 2010	FY 2011	FY 2012	Avg. Annual Change	FY 11-12 Δ Chg.
Allegany	126	110	142	146	150	3.5%	3%
Anne Arundel	1,222	1,279	1,175	1,349	1,373	2.4%	2%
Baltimore City	450	452	438	364	348	-5.0%	-4%
Carroll	219	279	222	291	525	19.1%	80%
CCBC	1,417	1,408	1,405	1,430	1,504	1.2%	5%
Cecil	56	71	76	101	92	10.4%	-9%
CSM	655	635	693	702	188	-22.1%	-73%
Chesapeake	119	159	185	159	751	44.6%	372%
Frederick	342	372	372	430	466	6.4%	8%
Garrett	40	54	70	54	104	21.1%	93%
Hagerstown	153	173	170	200	218	7.3%	9%
Harford	480	475	481	540	676	7.1%	25%
Howard	628	675	671	716	860	6.5%	20%
Montgomery	2,041	2,287	2,241	2,409	2,465	3.8%	2%
Prince George's	880	872	889	912	1,083	4.2%	19%
Wor-Wic	165	167	226	226	230	6.9%	2%
Total	8,993	9,468	9,456	10,029	11,033	4.2%	10%

Source: TSS



Table 6  
University System of Maryland  
Maryland Community College Transfers By Institution  
FY 2012

Sending Inst	Receiving Institution											
	Bowie	Coppin	Frostburg	Salisbury	Towson	UB	UMB	UMBC	UMCP	UMES	UMUC	USM
Allegany	3	1	111	4	7	2	1	2	0	1	18	150
Anne Arundel	31	10	22	97	246	76	209	16	216	4	446	1,373
Baltimore City	5	112	1	2	40	83	8	5	24	0	68	348
Carroll	0	2	0	22	367	17	22	2	54	1	38	525
CCBC	4	60	3	36	533	287	66	22	259	2	232	1,504
Cecil	0	1	1	24	37	4	12	3	2	0	8	92
Chesapeake	1	1	7	92	24	2	10	2	5	2	42	188
CSM	15	1	0	69	102	3	103	5	40	0	413	751
Frederick	1	1	44	44	104	10	69	5	47	2	139	466
Garrett	0	0	43	0	48	0	2	1	2	0	8	104
Hagerstown	4	0	70	17	34	2	16	0	6	1	68	218
Harford	1	8	20	42	332	38	73	8	67	1	86	676
Howard	10	14	5	54	196	48	149	9	223	8	144	860
Montgomery	49	9	34	69	285	64	809	45	367	19	715	2,465
Prince George's	191	16	18	13	64	17	139	9	53	18	545	1,083
Wor-Wic	0	0	0	151	11	1	7	3	3	27	27	230
Total	315	236	379	736	2,430	654	1,695	137	1,368	86	2,997	11,033

Source: TSS

Table 7  
University System of Maryland  
Maryland Community College Transfer Student Program Area  
FY 2008 - 2012

	FY 2008	FY 2009	FY 2010	FY 2011	FY 2012	FY 12 % of total	FY 08-12 Δ Chg.
Agric. & Nat. Res.	86	89	83	122	110	1%	28%
Arch. & Envtl. Des.	3	0	0	0	0	0%	—
Area Studies	27	26	25	22	18	0%	-33%
Biological Sciences	443	483	458	400	568	5%	28%
Business Managmt.	2,115	2,333	2,182	2,221	2,421	22%	14%
Communications	356	375	388	394	501	5%	41%
Comp. & Info. Sci.	715	754	859	1,030	1,249	11%	75%
Education	621	704	746	785	900	8%	45%
Engineering	198	230	245	277	266	2%	34%
Fine & Applied Arts	222	242	267	307	322	3%	45%
Foreign Languages	62	56	54	47	57	1%	-8%
Health Professions	596	626	576	661	787	7%	32%
Home Economics	43	46	34	28	24	0%	-44%
Law	112	110	98	108	98	1%	-13%
Letters	303	299	278	287	276	3%	-9%
Mathematics	78	66	72	59	91	1%	17%
Physical Science	95	89	102	112	101	1%	6%
Psychology	513	514	542	641	699	6%	36%
Public Affairs	350	413	433	419	451	4%	29%
Social Sciences	1,060	1,073	1,241	1,238	1,264	11%	19%
Interdisciplinary Studies	250	299	282	300	196	2%	-22%
Natural Sci. Tech.	8	5	3	3	10	0%	25%
Undeclared	737	636	488	568	624	6%	-15%
<b>Total</b>	<b>8,993</b>	<b>9,468</b>	<b>9,456</b>	<b>10,029</b>	<b>11,033</b>	<b>100%</b>	<b>23%</b>

Source: TSS



**Table 8**  
**University System of Maryland**  
**Maryland Community College Transfers Attendance Patterns**  
**Fall 2007 - Fall 2011**

All Transfer Students					
	Fall 2007	Fall 2008	Fall 2009	Fall 2010	Fall 2011
<b>Full-Time</b>					
N	3,672	4,479	4,294	4,783	5,264
%	66%	70%	70%	70%	72%
<b>Part-Time</b>					
N	1,872	1,947	1,867	2,032	2,090
%	34%	30%	30%	30%	28%
<b>Total</b>	<b>5,544</b>	<b>6,426</b>	<b>6,161</b>	<b>6,815</b>	<b>7,354</b>

African-American Transfer Students					
	Fall 2007	Fall 2008	Fall 2009	Fall 2010	Fall 2011
<b>Full-Time</b>					
N	730	861	848	849	1,131
%	53%	58%	58%	57%	60%
<b>Part-Time</b>					
N	643	635	620	637	742
%	47%	42%	42%	43%	40%
<b>Total</b>	<b>1,373</b>	<b>1,496</b>	<b>1,468</b>	<b>1,486</b>	<b>1,873</b>

White Transfer Students					
	Fall 2007	Fall 2008	Fall 2009	Fall 2010	Fall 2011
<b>Full-Time</b>					
N	2,040	2,547	2,430	2,849	2,925
%	73%	76%	76%	76%	76%
<b>Part-Time</b>					
N	750	818	780	913	936
%	27%	24%	24%	24%	24%
<b>Total</b>	<b>2,790</b>	<b>3,365</b>	<b>3,210</b>	<b>3,762</b>	<b>3,861</b>

**Note:** Attendance status is based upon the EIS file and only reflects students who transferred in the Fall term. The totals are less than reported elsewhere in this report.  
**Source:** EIS and TSS

Table 9

University System of Maryland  
Maryland Community College Transfer Student Level  
Fall 2007 - Fall 2011

**Number of Transfer Students****Percent of Transfer Students**

	All Transfer Students				
	Fall 2007	Fall 2008	Fall 2009	Fall 2010	Fall 2011
Freshmen	1,267	1,121	1,119	1,106	1,381
Sophomore	1,964	2,475	2,229	2,486	2,538
Junior	2,164	2,663	2,651	3,013	3,272
Senior	98	107	117	158	188
Unclassified	51	60	45	52	58
<b>Total</b>	<b>5,544</b>	<b>6,426</b>	<b>6,161</b>	<b>6,815</b>	<b>7,437</b>

	All Transfer Students				
	Fall 2007	Fall 2008	Fall 2009	Fall 2010	Fall 2011
Freshmen	23%	17%	18%	16%	19%
Sophomore	35%	39%	36%	36%	34%
Junior	39%	41%	43%	44%	44%
Senior	2%	2%	2%	2%	3%
Unclassified	1%	1%	1%	1%	1%
<b>Total</b>	<b>100%</b>	<b>100%</b>	<b>100%</b>	<b>100%</b>	<b>100%</b>

	African-American Transfer Students				
	Fall 2007	Fall 2008	Fall 2009	Fall 2010	Fall 2011
Freshmen	391	371	368	377	498
Sophomore	419	481	471	461	590
Junior	510	597	578	593	716
Senior	33	30	33	43	48
Unclassified	20	17	18	12	21
<b>Total</b>	<b>1,373</b>	<b>1,496</b>	<b>1,468</b>	<b>1,486</b>	<b>1,873</b>

	African-American Transfer Students				
	Fall 2007	Fall 2008	Fall 2009	Fall 2010	Fall 2011
Freshmen	28%	25%	25%	25%	27%
Sophomore	31%	32%	32%	31%	32%
Junior	37%	40%	39%	40%	38%
Senior	2%	2%	2%	3%	3%
Unclassified	1%	1%	1%	1%	1%
<b>Total</b>	<b>100%</b>	<b>100%</b>	<b>100%</b>	<b>100%</b>	<b>100%</b>

	White Transfer Students				
	Fall 2007	Fall 2008	Fall 2009	Fall 2010	Fall 2011
Freshmen	545	505	489	469	569
Sophomore	1,052	1,411	1,221	1,432	1,364
Junior	1,126	1,381	1,423	1,763	1,815
Senior	47	46	57	69	91
Unclassified	20	22	20	29	22
<b>Total</b>	<b>2,790</b>	<b>3,365</b>	<b>3,210</b>	<b>3,762</b>	<b>3,861</b>

	White Transfer Students				
	Fall 2007	Fall 2008	Fall 2009	Fall 2010	Fall 2011
Freshmen	20%	15%	15%	12%	15%
Sophomore	38%	42%	38%	38%	35%
Junior	40%	41%	44%	47%	47%
Senior	2%	1%	2%	2%	2%
Unclassified	1%	1%	1%	1%	1%
<b>Total</b>	<b>100%</b>	<b>100%</b>	<b>100%</b>	<b>100%</b>	<b>100%</b>

Note: Attendance status is based upon the EIS file and only reflects students who transferred in the Fall term. The totals are less than reported elsewhere in this report.

Source: EIS and TSS



Table 10  
University System of Maryland  
Maryland Community College Transfer Student Four-Year Graduation Rates  
FY 2002 - 2011 Cohorts

Number of Community College Transfers					
	Cohort Size	Graduation Rates			
		2-year	3-year	4-year	5-year
USM					
FY 2002	7,179	730	2,422	3,586	4,175
FY 2003	7,063	644	2,447	3,598	4,095
FY 2004	7,706	769	2,733	3,959	4,487
FY 2005	8,048	821	2,696	3,888	4,437
FY 2006	8,526	890	2,987	4,210	4,676
FY 2007	8,974	920	3,004	4,299	4,843
FY 2008	8,993	969	3,188	4,525	4,901
FY 2009	9,468	1,134	3,519	4,799	
FY 2010	9,456	1,114	3,417		
FY 2011	10,029	1,223			
USM w/out UMUC					
FY 2001	5,718	587	2,190	3,154	3,570
FY 2002	5,925	666	2,200	3,218	3,706
FY 2003	5,626	563	2,170	3,166	3,570
FY 2004	5,950	661	2,369	3,401	3,807
FY 2005	6,190	720	2,354	3,343	3,770
FY 2006	6,471	794	2,647	3,716	4,089
FY 2007	6,603	809	2,660	3,791	4,206
FY 2008	6,875	878	2,867	4,019	4,255
FY 2009	7,167	1,004	3,101	4,148	
FY 2010	6,834	983	2,941		
FY 2011	7,279	1,045			
Bowie					
FY 2001	301	36	107	148	165
FY 2002	377	43	121	181	202
FY 2003	340	33	109	166	198
FY 2004	264	25	90	138	160
FY 2005	453	29	89	149	185
FY 2006	290	17	77	130	154
FY 2007	281	29	84	133	159
FY 2008	302	26	81	127	151
FY 2009	292	16	72	124	
FY 2010	279	16	74		
FY 2011	238	17			
Coppin					
FY 2002	180	12	36	71	84
FY 2003	140	6	24	43	53
FY 2004	132	8	24	43	57
FY 2005	197	12	54	77	91
FY 2006	219	4	33	74	89
FY 2007	214	7	35	60	80
FY 2008	199	18	51	80	101
FY 2009	242	15	40	75	
FY 2010	199	18	55		
FY 2011	200	35			

Percent Graduating				
	Graduation Rates			
	2-year	3-year	4-year	5-year
<b>USM</b>				
FY 2002	10%	34%	50%	58%
FY 2003	9%	35%	51%	58%
FY 2004	10%	35%	51%	58%
FY 2005	10%	33%	48%	55%
FY 2006	10%	35%	49%	55%
FY 2007	10%	33%	48%	54%
FY 2008	11%	35%	50%	54%
FY 2009	12%	37%	51%	
FY 2010	12%	36%		
FY 2011	12%			
<b>USM w/out UMUC</b>				
FY 2001	10%	38%	55%	62%
FY 2002	11%	37%	54%	63%
FY 2003	10%	39%	56%	63%
FY 2004	11%	40%	57%	64%
FY 2005	12%	38%	54%	61%
FY 2006	12%	41%	57%	63%
FY 2007	12%	40%	57%	64%
FY 2008	13%	42%	58%	62%
FY 2009	14%	43%	58%	
FY 2010	14%	43%		
FY 2011	14%			
<b>Bowie</b>				
FY 2001	12%	36%	49%	55%
FY 2002	11%	32%	48%	54%
FY 2003	10%	32%	49%	58%
FY 2004	9%	34%	52%	61%
FY 2005	6%	20%	33%	41%
FY 2006	6%	27%	45%	53%
FY 2007	10%	30%	47%	57%
FY 2008	9%	27%	42%	50%
FY 2009	5%	25%	42%	
FY 2010	6%	27%		
FY 2011	7%			
<b>Coppin</b>				
FY 2002	7%	20%	39%	47%
FY 2003	4%	17%	31%	38%
FY 2004	6%	18%	33%	43%
FY 2005	6%	27%	39%	46%
FY 2006	2%	15%	34%	41%
FY 2007	3%	16%	28%	37%
FY 2008	9%	26%	40%	51%
FY 2009	6%	17%	31%	
FY 2010	9%	28%		
FY 2011	18%			



Table 10  
University System of Maryland  
Maryland Community College Transfer Student Four-Year Graduation Rates  
FY 2002 - 2011 Cohorts

Number of Community College Transfers					
	Cohort Size	Graduation Rates			
		2-year	3-year	4-year	5-year
Frostburg					
FY 2002	333	41	136	202	234
FY 2003	335	41	119	176	198
FY 2004	285	33	106	152	165
FY 2005	268	26	104	144	160
FY 2006	277	37	112	152	172
FY 2007	283	41	120	165	181
FY 2008	313	61	150	199	214
FY 2009	323	68	147	191	
FY 2010	344	61	153		
FY 2011	354	66			
Salisbury					
FY 2002	522	63	197	308	361
FY 2003	559	49	233	353	390
FY 2004	519	66	224	331	363
FY 2005	513	50	202	314	348
FY 2006	569	61	253	365	402
FY 2007	601	57	251	371	402
FY 2008	524	76	270	361	372
FY 2009	657	100	319	430	
FY 2010	632	99	297		
FY 2011	673	92			
Towson					
FY 2002	1,347	118	489	734	846
FY 2003	1,214	128	550	763	851
FY 2004	1,335	149	594	837	907
FY 2005	1,429	167	607	863	960
FY 2006	1,483	178	666	909	1001
FY 2007	1,630	211	706	1027	1116
FY 2008	1,729	223	758	1077	1119
FY 2009	1,889	274	871	1138	
FY 2010	1,607	258	764		
FY 2011	2,017	296			
UB					
FY 2002	527	67	204	266	298
FY 2003	490	56	191	243	274
FY 2004	616	67	216	285	324
FY 2005	677	70	206	280	330
FY 2006	902	108	316	412	464
FY 2007	872	94	288	389	448
FY 2008	843	85	282	402	441
FY 2009	793	76	290	369	
FY 2010	753	82	277		
FY 2011	664	55			

Percent Graduating				
	Graduation Rates			
	2-year	3-year	4-year	5-year
<b>Frostburg</b>				
FY 2002	12%	41%	61%	70%
FY 2003	12%	36%	53%	59%
FY 2004	12%	37%	53%	58%
FY 2005	10%	39%	54%	60%
FY 2006	13%	40%	55%	62%
FY 2007	14%	42%	58%	64%
FY 2008	19%	48%	64%	68%
FY 2009	21%	46%	59%	
FY 2010	18%	44%		
FY 2011	19%			
<b>Salisbury</b>				
FY 2002	12%	38%	59%	69%
FY 2003	9%	42%	63%	70%
FY 2004	13%	43%	64%	70%
FY 2005	10%	39%	61%	68%
FY 2006	11%	44%	64%	71%
FY 2007	9%	42%	62%	67%
FY 2008	15%	52%	69%	71%
FY 2009	15%	49%	65%	
FY 2010	16%	47%		
FY 2011	14%			
<b>Towson</b>				
FY 2002	9%	36%	54%	63%
FY 2003	11%	45%	63%	70%
FY 2004	11%	44%	63%	68%
FY 2005	12%	42%	60%	67%
FY 2006	12%	45%	61%	67%
FY 2007	13%	43%	63%	68%
FY 2008	13%	44%	62%	65%
FY 2009	15%	46%	60%	
FY 2010	16%	48%		
FY 2011	15%			
<b>UB</b>				
FY 2002	13%	39%	50%	57%
FY 2003	11%	39%	50%	56%
FY 2004	11%	35%	46%	53%
FY 2005	10%	30%	41%	49%
FY 2006	12%	35%	46%	51%
FY 2007	11%	33%	45%	51%
FY 2008	10%	33%	48%	52%
FY 2009	10%	37%	47%	
FY 2010	11%	37%		
FY 2011	8%			



Table 10  
University System of Maryland  
Maryland Community College Transfer Student Four-Year Graduation Rates  
FY 2002 - 2011 Cohorts

Number of Community College Transfers					
	Cohort Size	Graduation Rates			
		2-year	3-year	4-year	5-year
UMB					
FY 2002	251	119	187	205	211
FY 2003	131	63	105	112	114
FY 2004	149	73	119	122	123
FY 2005	146	75	122	130	135
FY 2006	136	67	116	122	125
FY 2007	156	67	125	127	130
FY 2008	164	60	130	137	136
FY 2009	162	63	115	128	
FY 2010	164	77	132		
FY 2011	128	52			
UMBC					
FY 2002	1,120	79	316	483	593
FY 2003	1,094	48	316	504	593
FY 2004	1,040	73	315	509	608
FY 2005	1,030	83	324	502	578
FY 2006	947	70	304	480	515
FY 2007	961	69	307	453	527
FY 2008	1,052	89	329	498	568
FY 2009	1,059	83	340	520	
FY 2010	1,181	83	355		
FY 2011	1,267	101			
UMCP					
FY 2002	1,240	121	505	755	864
FY 2003	1,295	136	514	797	889
FY 2004	1,486	165	651	943	1,050
FY 2005	1,341	201	619	834	923
FY 2006	1,571	246	750	1041	1127
FY 2007	1,557	229	731	1046	1137
FY 2008	1,652	232	784	1088	1114
FY 2009	1,658	300	873	1136	
FY 2010	1,578	280	814		
FY 2011	1,665	313			
UMES					
FY 2002	28	3	9	13	13
FY 2003	28	3	9	9	10
FY 2004	124	2	30	41	50
FY 2005	136	7	27	50	60
FY 2006	77	6	20	31	40
FY 2007	48	5	13	20	26
FY 2008	97	8	32	50	39
FY 2009	92	9	34	37	
FY 2010	97	9	20		
FY 2011	73	18			

Percent Graduating				
	Graduation Rates			
	2-year	3-year	4-year	5-year
<b>UMB</b>				
FY 2002	47%	75%	82%	84%
FY 2003	48%	80%	85%	87%
FY 2004	49%	80%	82%	83%
FY 2005	51%	84%	89%	92%
FY 2006	49%	85%	90%	92%
FY 2007	43%	80%	81%	83%
FY 2008	37%	79%	84%	83%
FY 2009	39%	71%	79%	
FY 2010	47%	80%		
FY 2011	41%			
<b>UMBC</b>				
FY 2002	7%	28%	43%	53%
FY 2003	4%	29%	46%	54%
FY 2004	7%	30%	49%	58%
FY 2005	8%	31%	49%	56%
FY 2006	7%	32%	51%	54%
FY 2007	7%	32%	47%	55%
FY 2008	8%	31%	47%	54%
FY 2009	8%	32%	49%	
FY 2010	7%	30%		
FY 2011	8%			
<b>UMCP</b>				
FY 2002	10%	41%	61%	70%
FY 2003	11%	40%	62%	69%
FY 2004	11%	44%	63%	71%
FY 2005	15%	46%	62%	69%
FY 2006	16%	48%	66%	72%
FY 2007	15%	47%	67%	73%
FY 2008	14%	47%	66%	67%
FY 2009	18%	53%	69%	
FY 2010	18%	52%		
FY 2011	19%			
<b>UMES</b>				
FY 2002	11%	32%	46%	46%
FY 2003	11%	32%	32%	36%
FY 2004	2%	24%	33%	40%
FY 2005	5%	20%	37%	44%
FY 2006	8%	26%	40%	52%
FY 2007	10%	27%	42%	54%
FY 2008	8%	33%	52%	40%
FY 2009	10%	37%	40%	
FY 2010	9%	21%		
FY 2011	25%			

Table 10  
University System of Maryland  
Maryland Community College Transfer Student Four-Year Graduation Rates  
FY 2002 - 2011 Cohorts

Number of Community College Transfers					
	Cohort Size	Graduation Rates			
		2-year	3-year	4-year	5-year
UMUC					
FY 2002	1,254	64	222	368	469
FY 2003	1,437	81	277	432	525
FY 2004	1,756	108	364	558	680
FY 2005	1,858	101	342	545	667
FY 2006	2,055	96	340	494	587
FY 2007	2,371	111	344	508	637
FY 2008	2,118	91	321	506	646
FY 2009	2,301	130	418	651	
FY 2010	2,622	131	476		
FY 2011	2,750	178			

Percent Graduating				
	Graduation Rates			
	2-year	3-year	4-year	5-year
UMUC				
FY 2002	5%	18%	29%	37%
FY 2003	6%	19%	30%	37%
FY 2004	6%	21%	32%	39%
FY 2005	5%	18%	29%	36%
FY 2006	5%	17%	24%	29%
FY 2007	5%	15%	21%	27%
FY 2008	4%	15%	24%	31%
FY 2009	6%	18%	28%	
FY 2010	5%	18%		
FY 2011	6%			

Source: MHEC TSS and DIS files



Table 11  
University System of Maryland  
Maryland Community College Transfer Student Four-Year Graduation Rates  
FY 2009

Receiving Inst	All Transfer Students		African-American Transfer Students		White Transfer Students	
	Cohort N	Four-Year Graduation Rate	Cohort N	Four-Year Graduation Rate	Cohort N	Four-Year Graduation Rate
Bowie	292	42%	239	39%	32	56%
Coppin	242	31%	225	30%	3	33%
Frostburg	323	59%	35	26%	379	63%
Salisbury	657	65%	60	63%	555	66%
Towson	1,889	60%	223	52%	1,192	64%
UB	793	47%	239	37%	269	55%
UMB	162	79%	53	70%	75	85%
UMBC	1,059	49%	174	38%	550	52%
UMCP	1,658	69%	231	61%	819	68%
UMES	92	40%	42	24%	30	47%
UMUC	2,301	28%	710	21%	968	33%
USM	9,468	51%	2,231	37%	4,872	56%

Source: TSS and DIS