



TOPIC: University System of Maryland: Transfer Students — Patterns of Enrollment and Success FY 2012

COMMITTEE: Finance Committee

DATE OF COMMITTEE MEETING: March 28, 2013

SUMMARY: This report examines progress within this increasingly important pipeline for enrollment growth. Institutional enrollment and success trends among the transfer population are analyzed and displayed, including changes in the proportion of transfer students to first-time students on USM campuses. Key factors that contribute to transfer success—such as credit attainment prior to transfer and full-time attendance—are also analyzed. Finally, for the first time, data showing the level of success Maryland Community College transfer students are having at USM’s regional centers at Shady Grove and Hagerstown are analyzed.

ALTERNATIVE(S): This report is for information only.

FISCAL IMPACT: This report is for information only.

CHANCELLOR’S RECOMMENDATION: This report is for information only.

COMMITTEE RECOMMENDATION:

DATE:

BOARD ACTION:

DATE:

SUBMITTED BY: Joseph F. Vivona (301) 445-1923



**TRANSFER STUDENTS TO THE
UNIVERSITY SYSTEM OF
MARYLAND:**

Patterns of Enrollment and Success

Updated through FY 2012

Bowie State University (BSU)
Coppin State University (CSU)
Frostburg State University (FSU)
Salisbury University (SU)
Towson University (TU)
University of Baltimore (UB)
University of Maryland, Baltimore (UMB)
University of Maryland, Baltimore County (UMBC)
University of Maryland, College Park (UMCP)
University of Maryland Eastern Shore (UMES)
University of Maryland University College (UMUC)

**Office of the Chief Operating Officer and
Vice Chancellor for Administration and Finance
University System of Maryland
March 2013**

Highlights:

- 21,288 students transferred to a USM institution in FY 2012, up 19% since FY 2008. Approximately 52 percent (11,033) of all transfers came from a Maryland community college.
- The number of Maryland community college students who transferred in FY 2012 increased by 10% (1,000+) over the FY 2011 level.
- Over the past five years (FY 2008 - FY 2012) the number of Maryland community college students transferring to a USM institution has increased by nearly 25 percent (+2,040).
- While six of Maryland's 16 public community colleges – all within the Baltimore-DC corridor –supplied over 60% of the community college transfers entering a USM institution in FY 2012, that number was down 10% from the FY 2011 level of 70%. This trend is expected to continue since the most rapid growth in the number of students transferring to a USM institution is occurring at community colleges outside the Baltimore-DC corridor (Frederick, Cecil, Harford, Carroll, Chesapeake, and Southern Maryland).
- The largest proportion of Maryland community college students who transferred to USM institutions in FY 2012 enrolled in the following program areas: business and management (22%), social sciences (11%), computer and information science (11%), education (8%), and the health professions (7%). This was consistent with historical trends.
- 72% of Maryland community college students who transferred to USM institutions in FY 2012 enrolled as full-time students (based on fall 2011 enrollments). Although it is decreasing, a gap still remains between African-American transfer students who enroll full time (60%) and white transfer students (76% of who enroll full-time after transferring.)
- 82% of Maryland community college students who transferred to a USM institution in FY 2012 entered with either sophomore or junior status (based on fall 2011 enrollment).
- 51% of the FY 2009 cohort of Maryland community college transfers to USM institutions graduated within four years of transferring (regardless of whether they attended full-time or part-time).
- 65% of the FY 2009 cohort of Maryland community college transfers to USM institutions who attended full-time graduated within four years of transferring. This was a rate of success comparable to the fall 2006 full-time, first-time new freshmen cohort six-year graduation rate of 60% graduating at the same institution of entry.
- A first ever analysis of graduation rates for Maryland Community College students enrolled at USM's Regional Higher Education Centers indicated that 4-year graduation rates for students who started in fall 2008 were 65% for Hagerstown and 74% for Shady Grove, matching and surpassing, respectively, the success rates of full-time transfers to USM institutions overall.

Background

The following report provides data on demographic characteristics, enrollment status, enrollment trends, and graduation rates for transfer students to institutions in the University System of Maryland. Most of the data supplied in this report were extracted from the 2012 Transfer Student System (TSS) data file.¹ The TSS was originally designed by the Maryland Higher Education Commission (MHEC), the University System of Maryland (USM), and the Maryland community colleges to provide feedback to the community colleges about the success of their students. The TSS from USM institutions also collects data on students who transferred across USM institutions, from other Maryland institutions, and from out-of-state institutions. Those data are presented in tables that appear in the appendix of this report.

The data affirm that transfer students are a vital and growing segment of our undergraduate population. Because all TSS data are continuously updated by the institutions, the information contained in this report is not comparable to information found in reports from prior years. The information in this report reflects the most recent updates to data from FY 2008 through FY 2012.

New in this report are data about the retention and graduation success of Maryland Community College transfers attending the USM's Regional Centers at Shady Grove and Hagerstown. These first time data show the significant contribution the regional centers provide for local transfer students.

For further information, please contact Chad Muntz, cmuntz@usmd.edu, 301-445-2737 or Becky Bell, rbell@usmd.edu, 301-405-2779.

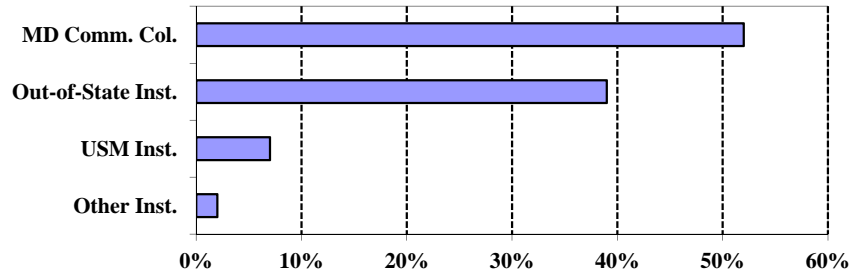
First-time Transfers to USM²

First-time transfers make up a substantial part of newly enrolled undergraduate students at USM institutions. Over 21,200 students transferred into USM institutions in FY 2012 (including summer 2011, fall 2011, and spring 2012 semesters), and was an increase of 1,000 transfers from FY 2011. Half of the students who transferred to a USM institution came from a Maryland community college.

¹ The TSS data files were matched with the fall Enrollment Information System (EIS) data files to provide additional information on enrollment status and student level upon entry.

² First-time transfers are defined as students transferring for the first time from a higher education institution with 12 or more credits.

Figure 1
Transfers to USM Institutions By Source of Transfer FY 2011



First-Time Community College Transfers to the USM in FY 2012

Enrollment Growth

Over 11,000 new students transferred from a Maryland community college to a USM institution in FY 2012. Over the past 5 years (FY 2008 – FY 2012), the number of new Maryland community college transfer students has grown 24 percent from 8,933 to 11,033. Those institutions experiencing the most growth in transfers over the past five years were UMUC (+879), Towson (+702), UMBC (+316), Salisbury (+212), Frostburg (+66), UMCP (+43), Coppin (+37), and Bowie (+13). UB (-189), UMB (-27) and UMES (-11) had fewer community college transfers in FY 2012 than FY 2008.

Selected Demographics

African-American students made up 24 percent of the transfer students from Maryland community colleges entering USM institutions in FY 2012, while Hispanic students comprised nine percent (9%). However, this latter group easily represented the fastest growing segment of the USM community college transfer population, growing 153% over the past five years. Finally, the proportion of community college transfers who were white decreased, and, for the first time, represented less than half (49%) of the community college transfers entering a USM institution. White transfers have steadily decreased as a proportion of the community college student body since FY 2000, when they represented 61% of community college.

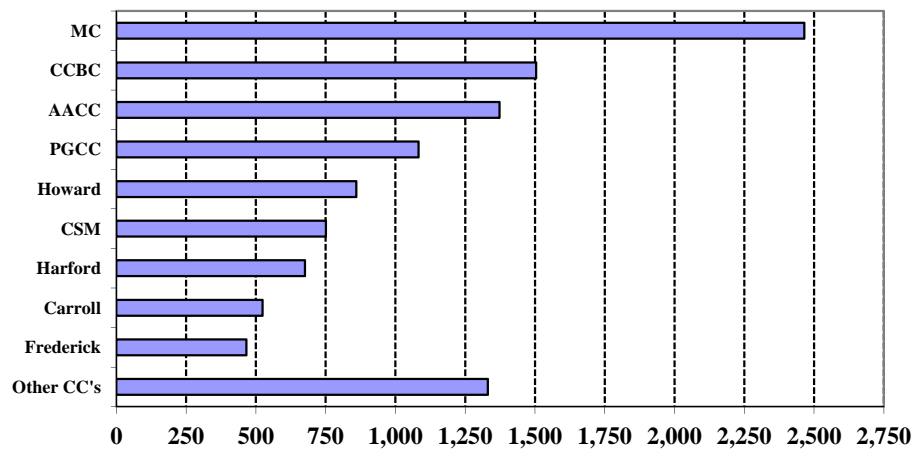
Approximately 56% of Maryland community college students transferring to USM institutions were female. The average age of the community college transfer students to USM institutions was significantly above that of new freshmen. The average age among Maryland community college transfers was 27 compared to an average age of 19 among new freshmen. However, almost 56% of community college transfer students were between 18-24 years of age.

Transfer and Enrollment Patterns

Six out of ten Maryland community college students transferring to the USM in FY 2012 came from just six of the state’s 16 public two-year institutions, all located within or close to the

Baltimore-Washington Region (See Figure 2). However, the proportion of transfer students coming from institutions in that region of the state is dropping (last year it was seven out of ten). Community college transfers from the outskirts of the Baltimore-Washington region (Frederick, Cecil, Harford, Carroll, Hagerstown, the College of Southern Maryland, and Chesapeake) currently represent just 26% of the Maryland community college transfers but have increased their overall share by 44% over the past five years. In FY 2012, only Baltimore City Community College and Cecil saw decreases in the number of students transferring to a USM institution. This drop has been greatest for Baltimore City, which has seen a steady drop of nearly 23% in the number of transfers coming from it over the past five years.

Figure 2
Maryland Community College Transfers to USM Institutions
FY 2012

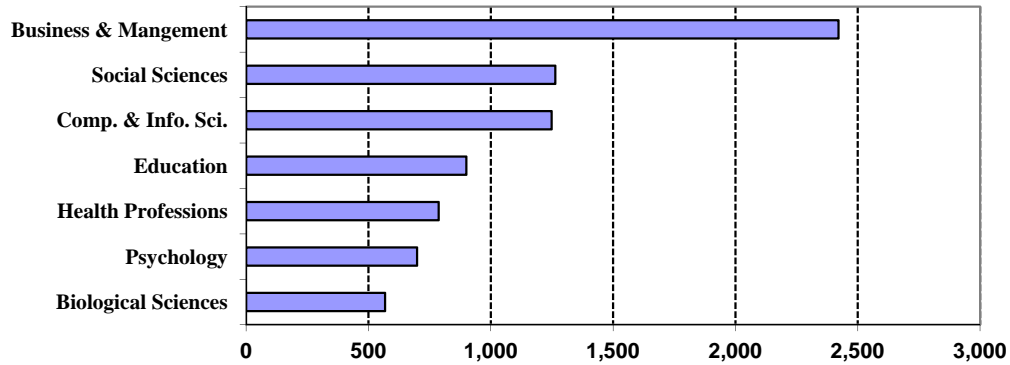


The five USM institutions enrolling the largest share of new Maryland community college transfers were: UMUC (2,997), Towson (2,430), UMCP (1,695), UMBC (1,368), and Salisbury (736). Together, these five institutions enrolled 84 percent of all Maryland community college transfers to the USM in FY 2012.

Programs of Study

Of the Maryland community college students who transferred to a USM institution in FY 2012, 22% entered programs in business and management, 11% in the social sciences, 11% in computer and information science, 8% in education, 7% in the health professions, 6% in Psychology, and 5% in Biological Sciences. Six percent of these students had an undeclared major.

Figure 3
Maryland Community College Transfers to USM Institutions
By Program Area at Time of Transfer
FY 2012



Fall Attendance Patterns and Student Level

Sixty-seven percent of all Maryland community college students who transferred to USM institutions in FY 2012 did so in the fall 2011 semester. Of those community college transfer students who entered in fall 2011, 72 percent attended on a full-time basis, an increase of two percent. A positive trend has been the percentage of African-American transfer students attending full-time, which increased to 60 percent but remained below the 76 percent level for white transfer students.

The largest proportion of Maryland community college students who transferred to USM institutions in FY 2012 entered as either sophomores or juniors; however the 78% of transfers entering at the sophomore/junior level was a slight decrease from the 80% who did so in FY 2011. For Fiscal 2012, 70% of African-American community college transfer students entered as sophomores or juniors compared to 82% of white students in fall 2010. The percentage of students entering with more credits is a positive one because it contributes to decreased time to degree and increased efficiency.

Graduation Rates

Of those Maryland community college transfers who enrolled in FY 2009, 51% graduated within four years at the same institution as entry. The graduation rate of Maryland community college transfers to the USM after four years was below that of first-time, full-time new freshmen after six years (the 6-year graduation rate of the fall 2006 new freshmen cohort was 60% at same institution as entry). However, given the differing entering attendance status for transfers (which includes those attending part time), this lower graduation rate is to be expected.

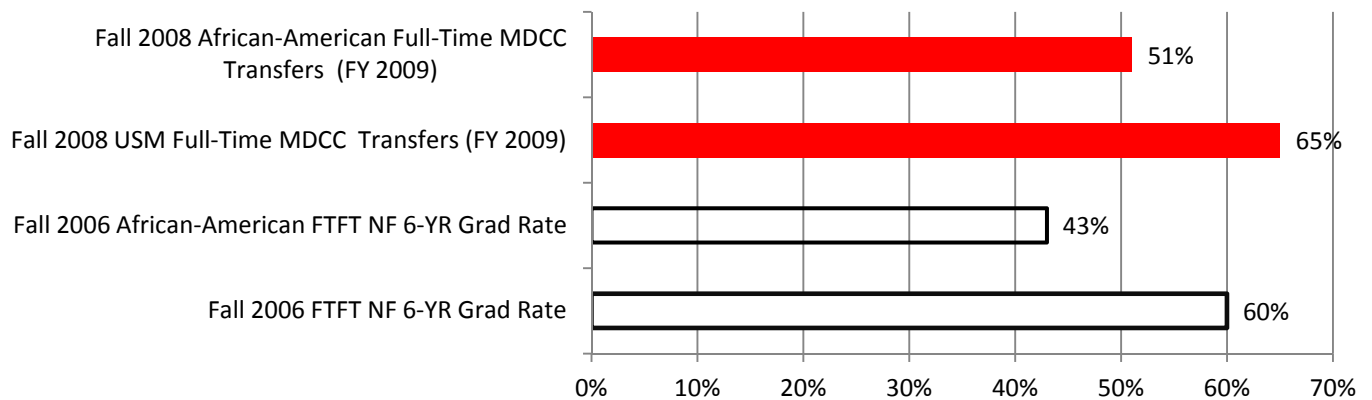
Attendance status appeared to impact graduation rates for transfer students significantly. Transfers students attending part time made up 30% of the fall 2008 student cohort in FY 2009, a decrease from 34% for the FY 2008 cohort. If the four-year graduation rate excluded these part-time students, however, and was calculated using only those transfers who attended full time, the graduation rate was higher than for the new transfer cohort (65% for the fall 2008 full time

Maryland community college transfers versus 60% of the fall 2006 full time new freshmen six year rate at the institution of first entry).

Of those African-American community college transfers who enrolled at a USM institution in FY 2009, 37% graduated within four years. In total, 42% of the African-American community college transfers attended part-time, of which the largest proportion are UMUC students. After removing part-time students, the fall 2008 African-American transfer 4-year graduation rate increased to 51%, which was eight points higher than the fall 2006 first-time full-time African American new freshmen cohort at institution of first entry.

The lower overall community college transfer graduation rate is mostly explained by the large numbers of part-time community college transfer students (Appendix Table 10). Although there has been a significant portion of Maryland Community College Students attending part time, in recent years, the portion of full time students has been increasing. This is encouraging because the future time-to-degree ratio for students will be positively affected by the addition of more full-time transfer students, as well as other improvements in efficiency that contribute to increases in degree production.

Figure 4
Maryland Community College Transfers and USM New Freshmen Graduation Rates
At Institution of First Entry
(New Transfer 4 Year VS New Freshmen 6 Year)



Regional Centers—Universities at Shady Grove and USM-Hagerstown

For the first time, sufficient data were available to look at the four-year graduation rates of Maryland community college transfers that enroll in programs at the USM regional centers. The first cohort available to measure the four-year graduation rate was the FY 2009 group of transfers who registered for at least one course at one of the regional centers. For the purposes of

this analysis, the regional center cohort was defined as any Maryland community college transfer who enrolled in at least one regional center course in the fall 2008 semester. The retention and graduation rates for these students are found in Figure 5 below. It is important to note that the students identified in these cohorts are a subset of the total population of 11,033 Maryland community college transfers who have been identified and discussed earlier in this report. It is also important to note that the regional center students are, and will continue to be, included in the institutional numbers presented in previous sections of this report, as they have been in all previous transfer reports.

Figure 5
USM Regional Centers

Maryland Community College Transfer Retention and Graduation Rates

| HAGERSTOWN | | | | | | | | |
|--------------------|-------------------|---------------------|--------------------------------------|---------------|---------------|---------------------------------------------|---------------|---------------|
| Fiscal Year | Fall Start | Cohort Size* | Retention Rates at Hagerstown | | | Graduation Rates Any USM Institution | | |
| | | | 2nd Yr | 3rd Yr | 4th Yr | 2-Year | 3-Year | 4-Year |
| FY2009 | 2008 | 46 | 72% | 28% | 13% | 37% | 50% | 65% |
| FY2010 | 2009 | 40 | 78% | 23% | 13% | 45% | 68% | |
| FY2011 | 2010 | 66 | 65% | 21% | | 41% | | |
| FY2012 | 2011 | 70 | 74% | | | | | |

| SHADY GROVE | | | | | | | | |
|--------------------|-------------------|---------------------|---------------------------------------|---------------|---------------|---------------------------------------------|---------------|---------------|
| Fiscal Year | Fall Start | Cohort Size* | Retention Rates at Shady Grove | | | Graduation Rates Any USM Institution | | |
| | | | 2nd Yr | 3rd Yr | 4th Yr | 2-Year | 3-Year | 4-Year |
| FY2009 | 2008 | 380 | 80% | 21% | 7% | 46% | 68% | 74% |
| FY2010 | 2009 | 470 | 79% | 26% | 26% | 44% | 67% | |
| FY2011 | 2010 | 428 | 72% | 25% | | 46% | | |
| FY2012 | 2011 | 530 | 71% | | | | | |

* Note: to be included in a cohort, the student officially transferred in the same fiscal year as the first fall enrollment at the regional center and as reported in MHEC TSS.

As the data show, the numbers of Maryland community college transfers at the two regional centers have been growing. The second-year retention rates at the centers show fluctuating results for Hagerstown and a decreasing trend for Shady Grove. However, subsequent analysis, not shown here, has found that some of those transfers were taking courses exclusively at the home campus and missed in the regional center data for the subsequent fall semester. Thus, the retention remains strong for the cohort overall and demonstrates the mobility of the transfer student.

The graduation rates are also encouraging, with over 40 percent of the cohort graduating within two years for both Hagerstown and Shady Grove (compared to a rate of 11% for transfers at USM campuses overall). The first four-year graduation rate available for analysis was the FY

2009 cohort of students that began in fall 2008. It showed a 65% rate for Hagerstown and 74% for Shady Grove. This initial finding means that students taking courses at the regional centers are graduating at the same or higher rates than first-time, full-time new freshmen for USM institutions overall (the fall 2006 cohort for first-time, full-time freshmen was 65% USM institutions overall) and at the same or, in the case of Shady Grove, a higher rate than for those Maryland community college transfers attending full time (the rate for the USM as a whole was 65%). Thus, the regional centers have increased not just the capacity of the USM but its overall efficiency as well.

APPENDIX

Table 1
 University System of Maryland Transfer Students
 By Type of Institution Transferred From
 By Receiving Institution
 FY 2012

Number of Transfers

| | MD Comm Coll. | USM Inst. | MSU or SMCM | MD Private | Out-of-State | Total Transfers |
|-----------|---------------|-----------|-------------|------------|--------------|-----------------|
| Bowie | 315 | 85 | 18 | 9 | 258 | 685 |
| Coppin | 236 | 52 | 18 | 16 | 79 | 401 |
| Frostburg | 379 | 25 | 6 | 9 | 247 | 666 |
| Salisbury | 736 | 82 | 4 | 22 | 152 | 996 |
| Towson | 2,430 | 75 | 9 | 39 | 512 | 3,065 |
| UB | 654 | 87 | 19 | 26 | 193 | 979 |
| UMB | 137 | 233 | 21 | 24 | 645 | 1,060 |
| UMBC | 1,368 | 67 | 4 | 10 | 145 | 1,594 |
| UMCP | 1,695 | 126 | 13 | 28 | 344 | 2,206 |
| UMES | 86 | 30 | 3 | 3 | 0 | 122 |
| UMUC | 2,997 | 543 | 68 | 74 | 5,832 | 9,514 |
| USM | 11,033 | 1,405 | 183 | 260 | 8,407 | 21,288 |

Percent of Transfers

| | MD Comm Coll. | USM Inst. | MSU or SMCM | MD Private | Out-of-State | Total Transfers |
|-----------|---------------|-----------|-------------|------------|--------------|-----------------|
| Bowie | 46% | 12% | 3% | 1% | 38% | 100% |
| Coppin | 59% | 13% | 4% | 4% | 20% | 100% |
| Frostburg | 57% | 4% | 1% | 1% | 37% | 100% |
| Salisbury | 74% | 8% | 0% | 2% | 15% | 100% |
| Towson | 79% | 2% | 0% | 1% | 17% | 100% |
| UB | 67% | 9% | 2% | 3% | 20% | 100% |
| UMB | 13% | 22% | 2% | 2% | 61% | 100% |
| UMBC | 86% | 4% | 0% | 1% | 9% | 100% |
| UMCP | 77% | 6% | 1% | 1% | 16% | 100% |
| UMES | 70% | 25% | 2% | 2% | 0% | 100% |
| UMUC | 32% | 6% | 1% | 1% | 61% | 100% |
| USM | 52% | 7% | 1% | 1% | 39% | 100% |

Note: Transfers are the number of undergraduates enrolled for the first time with 12 or more credits.

MSU=Morgan State University; SMCM=St. Mary's College of Maryland

Source: TSS

Table 2
University System of Maryland
First-time Transfers to USM Institutions
FY 2008 - FY 2012

| | FY 2008 | FY 2009 | FY 2010 | FY 2011 | FY 2012 | FY 08-12 Δ Chg. |
|----------------------------------------|----------------|----------------|----------------|----------------|----------------|--------------------|
| MD Comm College % of Total | 8,933 50% | 9,468 51% | 9,456 50% | 10,029 52% | 11,033 52% | 24% |
| USM Institutions % of Total | 1,217 7% | 1,279 7% | 1,378 7% | 1,432 7% | 1,405 7% | 15% |
| MSU & SMCM % of Total | 143 1% | 154 1% | 135 1% | 139 1% | 183 1% | 28% |
| Md Private Inst. % of Total | 185 1% | 181 1% | 209 1% | 194 1% | 260 1% | 41% |
| Out-of-State Inst. & Unk % of Total | 7,460 42% | 7,547 41% | 7,656 41% | 7,448 39% | 8,407 39% | 13% |
| Total % of Total | 17,938 100% | 18,629 100% | 18,834 100% | 19,242 100% | 21,288 100% | 19% |

MSU=Morgan State University; SMCM=St. Mary's College of Maryland

Source: TSS

Table 3
University System of Maryland
Maryland Community College Transfers by Ethnicity
FY 2008 - FY 2012

| | FY 2008 | FY 2009 | FY 2010 | FY 2011* | FY 2012* | FY 08-12 Δ Chg. |
|--------------------------------|---------------|---------------|---------------|----------------|----------------|--------------------|
| African-American % of Total | 2,130 24% | 2,231 24% | 2,266 24% | 2,275 23% | 2,613 24% | 23% |
| Hispanic % of Total | 379 4% | 473 5% | 507 5% | 707 7% | 957 9% | 153% |
| Other Minority % of Total | 731 8% | 835 9% | 795 8% | 1,070 11% | 1,283 12% | 76% |
| White % of Total | 4,611 51% | 4,766 50% | 4,808 51% | 5,384 54% | 5,396 49% | 17% |
| Other/Unknown % of Total | 1,142 13% | 1,163 12% | 1,080 11% | 593 6% | 784 7% | -31% |
| Total % of Total | 8,993 100% | 9,468 100% | 9,456 100% | 10,029 100% | 11,033 100% | 23% |

Note: Other includes foreign students

* Race/Ethnicity categories were changed to align with new federal guidelines. Starting in FY 2011, Other Minority includes American Indians, Pacific Islanders, Asians and students of multiple races.

Source: TSS

Table 4
 University System of Maryland
 Maryland Community College Transfers By Institution
 FY 2008 - FY 2012

| | FY 2008 | FY 2009 | FY 2010 | FY 2011 | FY 2012 | Avg. Annual Change | FY 11-12 Δ Chg. |
|-----------|---------|---------|---------|---------|---------|--------------------|-----------------|
| Bowie | 302 | 292 | 279 | 238 | 315 | 0.8% | 32% |
| Coppin | 199 | 242 | 199 | 200 | 236 | 3.5% | 18% |
| Frostburg | 313 | 323 | 344 | 354 | 379 | 3.9% | 7% |
| Salisbury | 524 | 657 | 632 | 673 | 736 | 7.0% | 9% |
| Towson | 1,729 | 1,889 | 1,607 | 2,017 | 2,430 | 7.0% | 20% |
| UB | 843 | 793 | 753 | 664 | 654 | -5.0% | -2% |
| UMB | 164 | 162 | 164 | 128 | 137 | -3.5% | 7% |
| UMBC | 1,052 | 1,059 | 1,181 | 1,267 | 1,368 | 5.4% | 8% |
| UMCP | 1,652 | 1,658 | 1,578 | 1,665 | 1,695 | 0.5% | 2% |
| UMES | 97 | 92 | 97 | 73 | 86 | -2.4% | 18% |
| UMUC | 2,118 | 2,301 | 2,622 | 2,750 | 2,997 | 7.2% | 9% |
| USM | 8,993 | 9,468 | 9,456 | 10,029 | 11,033 | 4.2% | 10% |

Source: TSS

Table 5
 University System of Maryland
 Maryland Community College Transfers By Sending Institution
 FY 2008 - FY 2012

| | FY 2008 | FY 2009 | FY 2010 | FY 2011 | FY 2012 | Avg. Annual Change | FY 11-12 Δ Chg. |
|-----------------|---------|---------|---------|---------|---------|--------------------|-----------------|
| Allegany | 126 | 110 | 142 | 146 | 150 | 3.5% | 3% |
| Anne Arundel | 1,222 | 1,279 | 1,175 | 1,349 | 1,373 | 2.4% | 2% |
| Baltimore City | 450 | 452 | 438 | 364 | 348 | -5.0% | -4% |
| Carroll | 219 | 279 | 222 | 291 | 525 | 19.1% | 80% |
| CCBC | 1,417 | 1,408 | 1,405 | 1,430 | 1,504 | 1.2% | 5% |
| Cecil | 56 | 71 | 76 | 101 | 92 | 10.4% | -9% |
| CSM | 655 | 635 | 693 | 702 | 188 | -22.1% | -73% |
| Chesapeake | 119 | 159 | 185 | 159 | 751 | 44.6% | 372% |
| Frederick | 342 | 372 | 372 | 430 | 466 | 6.4% | 8% |
| Garrett | 40 | 54 | 70 | 54 | 104 | 21.1% | 93% |
| Hagerstown | 153 | 173 | 170 | 200 | 218 | 7.3% | 9% |
| Harford | 480 | 475 | 481 | 540 | 676 | 7.1% | 25% |
| Howard | 628 | 675 | 671 | 716 | 860 | 6.5% | 20% |
| Montgomery | 2,041 | 2,287 | 2,241 | 2,409 | 2,465 | 3.8% | 2% |
| Prince George's | 880 | 872 | 889 | 912 | 1,083 | 4.2% | 19% |
| Wor-Wic | 165 | 167 | 226 | 226 | 230 | 6.9% | 2% |
| Total | 8,993 | 9,468 | 9,456 | 10,029 | 11,033 | 4.2% | 10% |

Source: TSS

Table 6
 University System of Maryland
 Maryland Community College Transfers By Institution
 FY 2012

| Sending Inst | Receiving Institution | | | | | | | | | | | USM |
|-----------------|-----------------------|------------|------------|------------|--------------|------------|--------------|------------|--------------|-----------|--------------|---------------|
| | Bowie | Coppin | Frostburg | Salisbury | Towson | UB | UMB | UMBC | UMCP | UMES | UMUC | |
| Allegany | 3 | 1 | 111 | 4 | 7 | 2 | 1 | 2 | 0 | 1 | 18 | 150 |
| Anne Arundel | 31 | 10 | 22 | 97 | 246 | 76 | 209 | 16 | 216 | 4 | 446 | 1,373 |
| Baltimore City | 5 | 112 | 1 | 2 | 40 | 83 | 8 | 5 | 24 | 0 | 68 | 348 |
| Carroll | 0 | 2 | 0 | 22 | 367 | 17 | 22 | 2 | 54 | 1 | 38 | 525 |
| CCBC | 4 | 60 | 3 | 36 | 533 | 287 | 66 | 22 | 259 | 2 | 232 | 1,504 |
| Cecil | 0 | 1 | 1 | 24 | 37 | 4 | 12 | 3 | 2 | 0 | 8 | 92 |
| Chesapeake | 1 | 1 | 7 | 92 | 24 | 2 | 10 | 2 | 5 | 2 | 42 | 188 |
| CSM | 15 | 1 | 0 | 69 | 102 | 3 | 103 | 5 | 40 | 0 | 413 | 751 |
| Frederick | 1 | 1 | 44 | 44 | 104 | 10 | 69 | 5 | 47 | 2 | 139 | 466 |
| Garrett | 0 | 0 | 43 | 0 | 48 | 0 | 2 | 1 | 2 | 0 | 8 | 104 |
| Hagerstown | 4 | 0 | 70 | 17 | 34 | 2 | 16 | 0 | 6 | 1 | 68 | 218 |
| Harford | 1 | 8 | 20 | 42 | 332 | 38 | 73 | 8 | 67 | 1 | 86 | 676 |
| Howard | 10 | 14 | 5 | 54 | 196 | 48 | 149 | 9 | 223 | 8 | 144 | 860 |
| Montgomery | 49 | 9 | 34 | 69 | 285 | 64 | 809 | 45 | 367 | 19 | 715 | 2,465 |
| Prince George's | 191 | 16 | 18 | 13 | 64 | 17 | 139 | 9 | 53 | 18 | 545 | 1,083 |
| Wor-Wic | 0 | 0 | 0 | 151 | 11 | 1 | 7 | 3 | 3 | 27 | 27 | 230 |
| Total | 315 | 236 | 379 | 736 | 2,430 | 654 | 1,695 | 137 | 1,368 | 86 | 2,997 | 11,033 |

Source: TSS

Table 7
 University System of Maryland
 Maryland Community College Transfer Student Program Area
 FY 2008 - 2012

| | FY 2008 | FY 2009 | FY 2010 | FY 2011 | FY 2012 | FY 12 % of total | FY 08-12 Δ Chg. |
|---------------------------|--------------|--------------|--------------|---------------|---------------|---------------------|--------------------|
| Agric. & Nat. Res. | 86 | 89 | 83 | 122 | 110 | 1% | 28% |
| Arch. & Env'tl. Des. | 3 | 0 | 0 | 0 | 0 | 0% | -- |
| Area Studies | 27 | 26 | 25 | 22 | 18 | 0% | -33% |
| Biological Sciences | 443 | 483 | 458 | 400 | 568 | 5% | 28% |
| Business Managmt. | 2,115 | 2,333 | 2,182 | 2,221 | 2,421 | 22% | 14% |
| Communications | 356 | 375 | 388 | 394 | 501 | 5% | 41% |
| Comp. & Info. Sci. | 715 | 754 | 859 | 1,030 | 1,249 | 11% | 75% |
| Education | 621 | 704 | 746 | 785 | 900 | 8% | 45% |
| Engineering | 198 | 230 | 245 | 277 | 266 | 2% | 34% |
| Fine & Applied Arts | 222 | 242 | 267 | 307 | 322 | 3% | 45% |
| Foreign Languages | 62 | 56 | 54 | 47 | 57 | 1% | -8% |
| Health Professions | 596 | 626 | 576 | 661 | 787 | 7% | 32% |
| Home Economics | 43 | 46 | 34 | 28 | 24 | 0% | -44% |
| Law | 112 | 110 | 98 | 108 | 98 | 1% | -13% |
| Letters | 303 | 299 | 278 | 287 | 276 | 3% | -9% |
| Mathematics | 78 | 66 | 72 | 59 | 91 | 1% | 17% |
| Physical Science | 95 | 89 | 102 | 112 | 101 | 1% | 6% |
| Psychology | 513 | 514 | 542 | 641 | 699 | 6% | 36% |
| Public Affairs | 350 | 413 | 433 | 419 | 451 | 4% | 29% |
| Social Sciences | 1,060 | 1,073 | 1,241 | 1,238 | 1,264 | 11% | 19% |
| Interdisciplinary Studies | 250 | 299 | 282 | 300 | 196 | 2% | -22% |
| Natural Sci. Tech. | 8 | 5 | 3 | 3 | 10 | 0% | 25% |
| Undeclared | 737 | 636 | 488 | 568 | 624 | 6% | -15% |
| Total | 8,993 | 9,468 | 9,456 | 10,029 | 11,033 | 100% | 23% |

Source: TSS

Table 8
 University System of Maryland
 Maryland Community College Transfers Attendance Patterns
 Fall 2007 - Fall 2011

| All Transfer Students | | | | | |
|-----------------------|-----------|-----------|-----------|-----------|-----------|
| | Fall 2007 | Fall 2008 | Fall 2009 | Fall 2010 | Fall 2011 |
| Full-Time | | | | | |
| N | 3,672 | 4,479 | 4,294 | 4,783 | 5,264 |
| % | 66% | 70% | 70% | 70% | 72% |
| Part-Time | | | | | |
| N | 1,872 | 1,947 | 1,867 | 2,032 | 2,090 |
| % | 34% | 30% | 30% | 30% | 28% |
| Total | 5,544 | 6,426 | 6,161 | 6,815 | 7,354 |

| African-American Transfer Students | | | | | |
|------------------------------------|-----------|-----------|-----------|-----------|-----------|
| | Fall 2007 | Fall 2008 | Fall 2009 | Fall 2010 | Fall 2011 |
| Full-Time | | | | | |
| N | 730 | 861 | 848 | 849 | 1,131 |
| % | 53% | 58% | 58% | 57% | 60% |
| Part-Time | | | | | |
| N | 643 | 635 | 620 | 637 | 742 |
| % | 47% | 42% | 42% | 43% | 40% |
| Total | 1,373 | 1,496 | 1,468 | 1,486 | 1,873 |

| White Transfer Students | | | | | |
|-------------------------|-----------|-----------|-----------|-----------|-----------|
| | Fall 2007 | Fall 2008 | Fall 2009 | Fall 2010 | Fall 2011 |
| Full-Time | | | | | |
| N | 2,040 | 2,547 | 2,430 | 2,849 | 2,925 |
| % | 73% | 76% | 76% | 76% | 76% |
| Part-Time | | | | | |
| N | 750 | 818 | 780 | 913 | 936 |
| % | 27% | 24% | 24% | 24% | 24% |
| Total | 2,790 | 3,365 | 3,210 | 3,762 | 3,861 |

Note: Attendance status is based upon the EIS file and only reflects students who transferred in the Fall term. The totals are less than reported elsewhere in this report.
 Source: EIS and TSS

Table 9
 University System of Maryland
 Maryland Community College Transfer Student Level
 Fall 2007 - Fall 2011

Number of Transfer Students

| | All Transfer Students | | | | |
|--------------|-----------------------|--------------|--------------|--------------|--------------|
| | Fall 2007 | Fall 2008 | Fall 2009 | Fall 2010 | Fall 2011 |
| Freshmen | 1,267 | 1,121 | 1,119 | 1,106 | 1,381 |
| Sophomore | 1,964 | 2,475 | 2,229 | 2,486 | 2,538 |
| Junior | 2,164 | 2,663 | 2,651 | 3,013 | 3,272 |
| Senior | 98 | 107 | 117 | 158 | 188 |
| Unclassified | 51 | 60 | 45 | 52 | 58 |
| Total | 5,544 | 6,426 | 6,161 | 6,815 | 7,437 |

Percent of Transfer Students

| | All Transfer Students | | | | |
|--------------|-----------------------|-------------|-------------|-------------|-------------|
| | Fall 2007 | Fall 2008 | Fall 2009 | Fall 2010 | Fall 2011 |
| Freshmen | 23% | 17% | 18% | 16% | 19% |
| Sophomore | 35% | 39% | 36% | 36% | 34% |
| Junior | 39% | 41% | 43% | 44% | 44% |
| Senior | 2% | 2% | 2% | 2% | 3% |
| Unclassified | 1% | 1% | 1% | 1% | 1% |
| Total | 100% | 100% | 100% | 100% | 100% |

African-American Transfer Students

| | African-American Transfer Students | | | | |
|--------------|------------------------------------|--------------|--------------|--------------|--------------|
| | Fall 2007 | Fall 2008 | Fall 2009 | Fall 2010 | Fall 2011 |
| Freshmen | 391 | 371 | 368 | 377 | 498 |
| Sophomore | 419 | 481 | 471 | 461 | 590 |
| Junior | 510 | 597 | 578 | 593 | 716 |
| Senior | 33 | 30 | 33 | 43 | 48 |
| Unclassified | 20 | 17 | 18 | 12 | 21 |
| Total | 1,373 | 1,496 | 1,468 | 1,486 | 1,873 |

African-American Transfer Students

| | African-American Transfer Students | | | | |
|--------------|------------------------------------|-------------|-------------|-------------|-------------|
| | Fall 2007 | Fall 2008 | Fall 2009 | Fall 2010 | Fall 2011 |
| Freshmen | 28% | 25% | 25% | 25% | 27% |
| Sophomore | 31% | 32% | 32% | 31% | 32% |
| Junior | 37% | 40% | 39% | 40% | 38% |
| Senior | 2% | 2% | 2% | 3% | 3% |
| Unclassified | 1% | 1% | 1% | 1% | 1% |
| Total | 100% | 100% | 100% | 100% | 100% |

White Transfer Students

| | White Transfer Students | | | | |
|--------------|-------------------------|--------------|--------------|--------------|--------------|
| | Fall 2007 | Fall 2008 | Fall 2009 | Fall 2010 | Fall 2011 |
| Freshmen | 545 | 505 | 489 | 469 | 569 |
| Sophomore | 1,052 | 1,411 | 1,221 | 1,432 | 1,364 |
| Junior | 1,126 | 1,381 | 1,423 | 1,763 | 1,815 |
| Senior | 47 | 46 | 57 | 69 | 91 |
| Unclassified | 20 | 22 | 20 | 29 | 22 |
| Total | 2,790 | 3,365 | 3,210 | 3,762 | 3,861 |

White Transfer Students

| | White Transfer Students | | | | |
|--------------|-------------------------|-------------|-------------|-------------|-------------|
| | Fall 2007 | Fall 2008 | Fall 2009 | Fall 2010 | Fall 2011 |
| Freshmen | 20% | 15% | 15% | 12% | 15% |
| Sophomore | 38% | 42% | 38% | 38% | 35% |
| Junior | 40% | 41% | 44% | 47% | 47% |
| Senior | 2% | 1% | 2% | 2% | 2% |
| Unclassified | 1% | 1% | 1% | 1% | 1% |
| Total | 100% | 100% | 100% | 100% | 100% |

Note: Attendance status is based upon the EIS file and only reflects students who transferred in the Fall term. The totals are less than reported elsewhere in this report.

Source: EIS and TSS

Table 10
 University System of Maryland
 Maryland Community College Transfer Student Four-Year Graduation Rates
 FY 2002 - 2011 Cohorts

Number of Community College Transfers

| | Cohort Size | Graduation Rates | | | |
|-----------------------|-------------|------------------|--------|--------|--------|
| | | 2-year | 3-year | 4-year | 5-year |
| USM | | | | | |
| FY 2002 | 7,179 | 730 | 2,422 | 3,586 | 4,175 |
| FY 2003 | 7,063 | 644 | 2,447 | 3,598 | 4,095 |
| FY 2004 | 7,706 | 769 | 2,733 | 3,959 | 4,487 |
| FY 2005 | 8,048 | 821 | 2,696 | 3,888 | 4,437 |
| FY 2006 | 8,526 | 890 | 2,987 | 4,210 | 4,676 |
| FY 2007 | 8,974 | 920 | 3,004 | 4,299 | 4,843 |
| FY 2008 | 8,993 | 969 | 3,188 | 4,525 | 4,901 |
| FY 2009 | 9,468 | 1,134 | 3,519 | 4,799 | |
| FY 2010 | 9,456 | 1,114 | 3,417 | | |
| FY 2011 | 10,029 | 1,223 | | | |
| USM w/out UMUC | | | | | |
| FY 2001 | 5,718 | 587 | 2,190 | 3,154 | 3,570 |
| FY 2002 | 5,925 | 666 | 2,200 | 3,218 | 3,706 |
| FY 2003 | 5,626 | 563 | 2,170 | 3,166 | 3,570 |
| FY 2004 | 5,950 | 661 | 2,369 | 3,401 | 3,807 |
| FY 2005 | 6,190 | 720 | 2,354 | 3,343 | 3,770 |
| FY 2006 | 6,471 | 794 | 2,647 | 3,716 | 4,089 |
| FY 2007 | 6,603 | 809 | 2,660 | 3,791 | 4,206 |
| FY 2008 | 6,875 | 878 | 2,867 | 4,019 | 4,255 |
| FY 2009 | 7,167 | 1,004 | 3,101 | 4,148 | |
| FY 2010 | 6,834 | 983 | 2,941 | | |
| FY 2011 | 7,279 | 1,045 | | | |
| Bowie | | | | | |
| FY 2001 | 301 | 36 | 107 | 148 | 165 |
| FY 2002 | 377 | 43 | 121 | 181 | 202 |
| FY 2003 | 340 | 33 | 109 | 166 | 198 |
| FY 2004 | 264 | 25 | 90 | 138 | 160 |
| FY 2005 | 453 | 29 | 89 | 149 | 185 |
| FY 2006 | 290 | 17 | 77 | 130 | 154 |
| FY 2007 | 281 | 29 | 84 | 133 | 159 |
| FY 2008 | 302 | 26 | 81 | 127 | 151 |
| FY 2009 | 292 | 16 | 72 | 124 | |
| FY 2010 | 279 | 16 | 74 | | |
| FY 2011 | 238 | 17 | | | |
| Coppin | | | | | |
| FY 2002 | 180 | 12 | 36 | 71 | 84 |
| FY 2003 | 140 | 6 | 24 | 43 | 53 |
| FY 2004 | 132 | 8 | 24 | 43 | 57 |
| FY 2005 | 197 | 12 | 54 | 77 | 91 |
| FY 2006 | 219 | 4 | 33 | 74 | 89 |
| FY 2007 | 214 | 7 | 35 | 60 | 80 |
| FY 2008 | 199 | 18 | 51 | 80 | 101 |
| FY 2009 | 242 | 15 | 40 | 75 | |
| FY 2010 | 199 | 18 | 55 | | |
| FY 2011 | 200 | 35 | | | |

Percent Graduating

| | Graduation Rates | | | |
|-----------------------|------------------|--------|--------|--------|
| | 2-year | 3-year | 4-year | 5-year |
| USM | | | | |
| FY 2002 | 10% | 34% | 50% | 58% |
| FY 2003 | 9% | 35% | 51% | 58% |
| FY 2004 | 10% | 35% | 51% | 58% |
| FY 2005 | 10% | 33% | 48% | 55% |
| FY 2006 | 10% | 35% | 49% | 55% |
| FY 2007 | 10% | 33% | 48% | 54% |
| FY 2008 | 11% | 35% | 50% | 54% |
| FY 2009 | 12% | 37% | 51% | |
| FY 2010 | 12% | 36% | | |
| FY 2011 | 12% | | | |
| USM w/out UMUC | | | | |
| FY 2001 | 10% | 38% | 55% | 62% |
| FY 2002 | 11% | 37% | 54% | 63% |
| FY 2003 | 10% | 39% | 56% | 63% |
| FY 2004 | 11% | 40% | 57% | 64% |
| FY 2005 | 12% | 38% | 54% | 61% |
| FY 2006 | 12% | 41% | 57% | 63% |
| FY 2007 | 12% | 40% | 57% | 64% |
| FY 2008 | 13% | 42% | 58% | 62% |
| FY 2009 | 14% | 43% | 58% | |
| FY 2010 | 14% | 43% | | |
| FY 2011 | 14% | | | |
| Bowie | | | | |
| FY 2001 | 12% | 36% | 49% | 55% |
| FY 2002 | 11% | 32% | 48% | 54% |
| FY 2003 | 10% | 32% | 49% | 58% |
| FY 2004 | 9% | 34% | 52% | 61% |
| FY 2005 | 6% | 20% | 33% | 41% |
| FY 2006 | 6% | 27% | 45% | 53% |
| FY 2007 | 10% | 30% | 47% | 57% |
| FY 2008 | 9% | 27% | 42% | 50% |
| FY 2009 | 5% | 25% | 42% | |
| FY 2010 | 6% | 27% | | |
| FY 2011 | 7% | | | |
| Coppin | | | | |
| FY 2002 | 7% | 20% | 39% | 47% |
| FY 2003 | 4% | 17% | 31% | 38% |
| FY 2004 | 6% | 18% | 33% | 43% |
| FY 2005 | 6% | 27% | 39% | 46% |
| FY 2006 | 2% | 15% | 34% | 41% |
| FY 2007 | 3% | 16% | 28% | 37% |
| FY 2008 | 9% | 26% | 40% | 51% |
| FY 2009 | 6% | 17% | 31% | |
| FY 2010 | 9% | 28% | | |
| FY 2011 | 18% | | | |

Table 10
 University System of Maryland
 Maryland Community College Transfer Student Four-Year Graduation Rates
 FY 2002 - 2011 Cohorts

Number of Community College Transfers

| | Cohort Size | Graduation Rates | | | |
|------------------|-------------|------------------|--------|--------|--------|
| | | 2-year | 3-year | 4-year | 5-year |
| Frostburg | | | | | |
| FY 2002 | 333 | 41 | 136 | 202 | 234 |
| FY 2003 | 335 | 41 | 119 | 176 | 198 |
| FY 2004 | 285 | 33 | 106 | 152 | 165 |
| FY 2005 | 268 | 26 | 104 | 144 | 160 |
| FY 2006 | 277 | 37 | 112 | 152 | 172 |
| FY 2007 | 283 | 41 | 120 | 165 | 181 |
| FY 2008 | 313 | 61 | 150 | 199 | 214 |
| FY 2009 | 323 | 68 | 147 | 191 | |
| FY 2010 | 344 | 61 | 153 | | |
| FY 2011 | 354 | 66 | | | |
| Salisbury | | | | | |
| FY 2002 | 522 | 63 | 197 | 308 | 361 |
| FY 2003 | 559 | 49 | 233 | 353 | 390 |
| FY 2004 | 519 | 66 | 224 | 331 | 363 |
| FY 2005 | 513 | 50 | 202 | 314 | 348 |
| FY 2006 | 569 | 61 | 253 | 365 | 402 |
| FY 2007 | 601 | 57 | 251 | 371 | 402 |
| FY 2008 | 524 | 76 | 270 | 361 | 372 |
| FY 2009 | 657 | 100 | 319 | 430 | |
| FY 2010 | 632 | 99 | 297 | | |
| FY 2011 | 673 | 92 | | | |
| Towson | | | | | |
| FY 2002 | 1,347 | 118 | 489 | 734 | 846 |
| FY 2003 | 1,214 | 128 | 550 | 763 | 851 |
| FY 2004 | 1,335 | 149 | 594 | 837 | 907 |
| FY 2005 | 1,429 | 167 | 607 | 863 | 960 |
| FY 2006 | 1,483 | 178 | 666 | 909 | 1001 |
| FY 2007 | 1,630 | 211 | 706 | 1027 | 1116 |
| FY 2008 | 1,729 | 223 | 758 | 1077 | 1119 |
| FY 2009 | 1,889 | 274 | 871 | 1138 | |
| FY 2010 | 1,607 | 258 | 764 | | |
| FY 2011 | 2,017 | 296 | | | |
| UB | | | | | |
| FY 2002 | 527 | 67 | 204 | 266 | 298 |
| FY 2003 | 490 | 56 | 191 | 243 | 274 |
| FY 2004 | 616 | 67 | 216 | 285 | 324 |
| FY 2005 | 677 | 70 | 206 | 280 | 330 |
| FY 2006 | 902 | 108 | 316 | 412 | 464 |
| FY 2007 | 872 | 94 | 288 | 389 | 448 |
| FY 2008 | 843 | 85 | 282 | 402 | 441 |
| FY 2009 | 793 | 76 | 290 | 369 | |
| FY 2010 | 753 | 82 | 277 | | |
| FY 2011 | 664 | 55 | | | |

Percent Graduating

| | Graduation Rates | | | |
|------------------|------------------|--------|--------|--------|
| | 2-year | 3-year | 4-year | 5-year |
| Frostburg | | | | |
| FY 2002 | 12% | 41% | 61% | 70% |
| FY 2003 | 12% | 36% | 53% | 59% |
| FY 2004 | 12% | 37% | 53% | 58% |
| FY 2005 | 10% | 39% | 54% | 60% |
| FY 2006 | 13% | 40% | 55% | 62% |
| FY 2007 | 14% | 42% | 58% | 64% |
| FY 2008 | 19% | 48% | 64% | 68% |
| FY 2009 | 21% | 46% | 59% | |
| FY 2010 | 18% | 44% | | |
| FY 2011 | 19% | | | |
| Salisbury | | | | |
| FY 2002 | 12% | 38% | 59% | 69% |
| FY 2003 | 9% | 42% | 63% | 70% |
| FY 2004 | 13% | 43% | 64% | 70% |
| FY 2005 | 10% | 39% | 61% | 68% |
| FY 2006 | 11% | 44% | 64% | 71% |
| FY 2007 | 9% | 42% | 62% | 67% |
| FY 2008 | 15% | 52% | 69% | 71% |
| FY 2009 | 15% | 49% | 65% | |
| FY 2010 | 16% | 47% | | |
| FY 2011 | 14% | | | |
| Towson | | | | |
| FY 2002 | 9% | 36% | 54% | 63% |
| FY 2003 | 11% | 45% | 63% | 70% |
| FY 2004 | 11% | 44% | 63% | 68% |
| FY 2005 | 12% | 42% | 60% | 67% |
| FY 2006 | 12% | 45% | 61% | 67% |
| FY 2007 | 13% | 43% | 63% | 68% |
| FY 2008 | 13% | 44% | 62% | 65% |
| FY 2009 | 15% | 46% | 60% | |
| FY 2010 | 16% | 48% | | |
| FY 2011 | 15% | | | |
| UB | | | | |
| FY 2002 | 13% | 39% | 50% | 57% |
| FY 2003 | 11% | 39% | 50% | 56% |
| FY 2004 | 11% | 35% | 46% | 53% |
| FY 2005 | 10% | 30% | 41% | 49% |
| FY 2006 | 12% | 35% | 46% | 51% |
| FY 2007 | 11% | 33% | 45% | 51% |
| FY 2008 | 10% | 33% | 48% | 52% |
| FY 2009 | 10% | 37% | 47% | |
| FY 2010 | 11% | 37% | | |
| FY 2011 | 8% | | | |

Table 10
 University System of Maryland
 Maryland Community College Transfer Student Four-Year Graduation Rates
 FY 2002 - 2011 Cohorts

Number of Community College Transfers

| | Cohort Size | Graduation Rates | | | |
|-------------|-------------|------------------|--------|--------|--------|
| | | 2-year | 3-year | 4-year | 5-year |
| UMB | | | | | |
| FY 2002 | 251 | 119 | 187 | 205 | 211 |
| FY 2003 | 131 | 63 | 105 | 112 | 114 |
| FY 2004 | 149 | 73 | 119 | 122 | 123 |
| FY 2005 | 146 | 75 | 122 | 130 | 135 |
| FY 2006 | 136 | 67 | 116 | 122 | 125 |
| FY 2007 | 156 | 67 | 125 | 127 | 130 |
| FY 2008 | 164 | 60 | 130 | 137 | 136 |
| FY 2009 | 162 | 63 | 115 | 128 | |
| FY 2010 | 164 | 77 | 132 | | |
| FY 2011 | 128 | 52 | | | |
| UMBC | | | | | |
| FY 2002 | 1,120 | 79 | 316 | 483 | 593 |
| FY 2003 | 1,094 | 48 | 316 | 504 | 593 |
| FY 2004 | 1,040 | 73 | 315 | 509 | 608 |
| FY 2005 | 1,030 | 83 | 324 | 502 | 578 |
| FY 2006 | 947 | 70 | 304 | 480 | 515 |
| FY 2007 | 961 | 69 | 307 | 453 | 527 |
| FY 2008 | 1,052 | 89 | 329 | 498 | 568 |
| FY 2009 | 1,059 | 83 | 340 | 520 | |
| FY 2010 | 1,181 | 83 | 355 | | |
| FY 2011 | 1,267 | 101 | | | |
| UMCP | | | | | |
| FY 2002 | 1,240 | 121 | 505 | 755 | 864 |
| FY 2003 | 1,295 | 136 | 514 | 797 | 889 |
| FY 2004 | 1,486 | 165 | 651 | 943 | 1,050 |
| FY 2005 | 1,341 | 201 | 619 | 834 | 923 |
| FY 2006 | 1,571 | 246 | 750 | 1041 | 1127 |
| FY 2007 | 1,557 | 229 | 731 | 1046 | 1137 |
| FY 2008 | 1,652 | 232 | 784 | 1088 | 1114 |
| FY 2009 | 1,658 | 300 | 873 | 1136 | |
| FY 2010 | 1,578 | 280 | 814 | | |
| FY 2011 | 1,665 | 313 | | | |
| UMES | | | | | |
| FY 2002 | 28 | 3 | 9 | 13 | 13 |
| FY 2003 | 28 | 3 | 9 | 9 | 10 |
| FY 2004 | 124 | 2 | 30 | 41 | 50 |
| FY 2005 | 136 | 7 | 27 | 50 | 60 |
| FY 2006 | 77 | 6 | 20 | 31 | 40 |
| FY 2007 | 48 | 5 | 13 | 20 | 26 |
| FY 2008 | 97 | 8 | 32 | 50 | 39 |
| FY 2009 | 92 | 9 | 34 | 37 | |
| FY 2010 | 97 | 9 | 20 | | |
| FY 2011 | 73 | 18 | | | |

Percent Graduating

| | Graduation Rates | | | |
|-------------|------------------|--------|--------|--------|
| | 2-year | 3-year | 4-year | 5-year |
| UMB | | | | |
| FY 2002 | 47% | 75% | 82% | 84% |
| FY 2003 | 48% | 80% | 85% | 87% |
| FY 2004 | 49% | 80% | 82% | 83% |
| FY 2005 | 51% | 84% | 89% | 92% |
| FY 2006 | 49% | 85% | 90% | 92% |
| FY 2007 | 43% | 80% | 81% | 83% |
| FY 2008 | 37% | 79% | 84% | 83% |
| FY 2009 | 39% | 71% | 79% | |
| FY 2010 | 47% | 80% | | |
| FY 2011 | 41% | | | |
| UMBC | | | | |
| FY 2002 | 7% | 28% | 43% | 53% |
| FY 2003 | 4% | 29% | 46% | 54% |
| FY 2004 | 7% | 30% | 49% | 58% |
| FY 2005 | 8% | 31% | 49% | 56% |
| FY 2006 | 7% | 32% | 51% | 54% |
| FY 2007 | 7% | 32% | 47% | 55% |
| FY 2008 | 8% | 31% | 47% | 54% |
| FY 2009 | 8% | 32% | 49% | |
| FY 2010 | 7% | 30% | | |
| FY 2011 | 8% | | | |
| UMCP | | | | |
| FY 2002 | 10% | 41% | 61% | 70% |
| FY 2003 | 11% | 40% | 62% | 69% |
| FY 2004 | 11% | 44% | 63% | 71% |
| FY 2005 | 15% | 46% | 62% | 69% |
| FY 2006 | 16% | 48% | 66% | 72% |
| FY 2007 | 15% | 47% | 67% | 73% |
| FY 2008 | 14% | 47% | 66% | 67% |
| FY 2009 | 18% | 53% | 69% | |
| FY 2010 | 18% | 52% | | |
| FY 2011 | 19% | | | |
| UMES | | | | |
| FY 2002 | 11% | 32% | 46% | 46% |
| FY 2003 | 11% | 32% | 32% | 36% |
| FY 2004 | 2% | 24% | 33% | 40% |
| FY 2005 | 5% | 20% | 37% | 44% |
| FY 2006 | 8% | 26% | 40% | 52% |
| FY 2007 | 10% | 27% | 42% | 54% |
| FY 2008 | 8% | 33% | 52% | 40% |
| FY 2009 | 10% | 37% | 40% | |
| FY 2010 | 9% | 21% | | |
| FY 2011 | 25% | | | |

Table 10
 University System of Maryland
 Maryland Community College Transfer Student Four-Year Graduation Rates
 FY 2002 - 2011 Cohorts

Number of Community College Transfers

| | Cohort Size | Graduation Rates | | | |
|---------|-------------|------------------|--------|--------|--------|
| | | 2-year | 3-year | 4-year | 5-year |
| UMUC | | | | | |
| FY 2002 | 1,254 | 64 | 222 | 368 | 469 |
| FY 2003 | 1,437 | 81 | 277 | 432 | 525 |
| FY 2004 | 1,756 | 108 | 364 | 558 | 680 |
| FY 2005 | 1,858 | 101 | 342 | 545 | 667 |
| FY 2006 | 2,055 | 96 | 340 | 494 | 587 |
| FY 2007 | 2,371 | 111 | 344 | 508 | 637 |
| FY 2008 | 2,118 | 91 | 321 | 506 | 646 |
| FY 2009 | 2,301 | 130 | 418 | 651 | |
| FY 2010 | 2,622 | 131 | 476 | | |
| FY 2011 | 2,750 | 178 | | | |

Percent Graduating

| | Graduation Rates | | | |
|---------|------------------|--------|--------|--------|
| | 2-year | 3-year | 4-year | 5-year |
| UMUC | | | | |
| FY 2002 | 5% | 18% | 29% | 37% |
| FY 2003 | 6% | 19% | 30% | 37% |
| FY 2004 | 6% | 21% | 32% | 39% |
| FY 2005 | 5% | 18% | 29% | 36% |
| FY 2006 | 5% | 17% | 24% | 29% |
| FY 2007 | 5% | 15% | 21% | 27% |
| FY 2008 | 4% | 15% | 24% | 31% |
| FY 2009 | 6% | 18% | 28% | |
| FY 2010 | 5% | 18% | | |
| FY 2011 | 6% | | | |

Source: MHEC TSS and DIS files

Table 11
 University System of Maryland
 Maryland Community College Transfer Student Four-Year Graduation Rates
 FY 2009

| Receiving Inst | All Transfer Students | | African-American Transfer Students | | White Transfer Students | |
|----------------|-----------------------|---------------------------|------------------------------------|---------------------------|-------------------------|---------------------------|
| | Cohort N | Four-Year Graduation Rate | Cohort N | Four-Year Graduation Rate | Cohort N | Four-Year Graduation Rate |
| Bowie | 292 | 42% | 239 | 39% | 32 | 56% |
| Coppin | 242 | 31% | 225 | 30% | 3 | 33% |
| Frostburg | 323 | 59% | 35 | 26% | 379 | 63% |
| Salisbury | 657 | 65% | 60 | 63% | 555 | 66% |
| Towson | 1,889 | 60% | 223 | 52% | 1,192 | 64% |
| UB | 793 | 47% | 239 | 37% | 269 | 55% |
| UMB | 162 | 79% | 53 | 70% | 75 | 85% |
| UMBC | 1,059 | 49% | 174 | 38% | 550 | 52% |
| UMCP | 1,658 | 69% | 231 | 61% | 819 | 68% |
| UMES | 92 | 40% | 42 | 24% | 30 | 47% |
| UMUC | 2,301 | 28% | 710 | 21% | 968 | 33% |
| USM | 9,468 | 51% | 2,231 | 37% | 4,872 | 56% |

Source: TSS and DIS