



TOPIC: Overview of Undergraduate Enrollment, Persistence, and Success at the University System of Maryland

COMMITTEE: Education Policy and Student Life

DATE OF COMMITTEE MEETING: March 11, 2014

SUMMARY: Three annual reports are included under this cover and will be discussed as part of this topic. The three reports are as follows:

- *SAT Percentile Distributions of First-Time Undergraduates;*
- *Retention and Graduation Rates of First-time Full-time Degree Seeking Undergraduates;* and
- *Transfer Students to the University System of Maryland: Patterns of Enrollment and Success.*

When looked at as a whole, the three reports provide a useful overview of undergraduate enrollment within the USM, including the various pipelines that feed undergraduate enrollment, the academic profile of incoming first-time students (as measured by SAT scores), student success and persistence after enrollment, and, in the end, bachelor degree attainment.

For new freshmen, a key admissions component correlated with student success is the entering students' SAT scores. The *SAT Percentile Distributions of First-Time Undergraduates* report presents central tendency data for the SAT scores at each USM institution. The report also provides a context for interpreting those scores by comparing institutional SAT data with those at peer institutions.

The second report, *Retention and Graduation Rates of First-time Full-time Degree Seeking Undergraduates*, examines the level of academic success—as measured by retention and graduation rates—achieved by first-time, full-time students at USM institutions. Key trends in student enrollment and success are broken out and analyzed at both the institutional and Systemwide level.

The third report, *Transfer Students to the University System of Maryland: Patterns of Enrollment and Success*, examines progress within this increasingly important pipeline for enrollment growth. Institutional enrollment and success trends among the transfer population are analyzed and displayed, including changes in the proportion of transfer students to first-time students on USM campuses. Key factors that contribute to transfer success, such as credit attainment prior to transfer or full-time attendance, are also analyzed. Finally, data showing the level of success Maryland Community College transfer students are having at USM's regional centers at Shady Grove and Hagerstown are analyzed.

ALTERNATIVE(S): This report is for information only.

FISCAL IMPACT: This report is for information only.

CHANCELLOR'S RECOMMENDATION: This report is for information only.

COMMITTEE RECOMMENDATION: Information Only

DATE: March 11, 2014

BOARD ACTION:

DATE:

SUBMITTED BY: Joseph F. Vivona

301-445-1923

jvivona@usmd.edu



**SAT PERCENTILE DISTRIBUTIONS OF
FIRST-TIME UNDERGRADUATES
FALL 2009 - 2013**

Bowie State University (BSU)
Coppin State University (CSU)
Frostburg State University (FSU)
Salisbury University (SU)
Towson University (TU)
University of Baltimore (UB)
University of Maryland, Baltimore County (UMBC)
University of Maryland, College Park (UMCP)
University of Maryland Eastern Shore (UMES)

**Office of the Chief Operating Officer and
Vice Chancellor for Administration and Finance
University System of Maryland Office
March 2014**

SAT Percentile Distributions of First-Time Undergraduates

Fall 2009 - 2013

Background

The University System of Maryland institutions report SAT scores of first-time undergraduates to MHEC annually. The institutions report average SAT scores for the verbal and math sections, a verbal and math combined average score, and the 25th and 75th percentiles of the combined scores. The distributions include SAT scores for first-time, full-time, and part-time undergraduates at all USM institutions except UMB and UMUC.

Included in this report are only the 25th and 75th percentile combined math and critical reading scores to give decision-makers a sense of the score distributions of first-time freshmen. For further information, contact Chad Muntz, cmuntz@usmd.edu (301) 445-2737 or Rebecca Bell, rbell@usmd.edu (301) 445-2779.

Highlights

- In fall 2013, a total of 10,834 of the 12,359 freshmen who enrolled at a USM institution reported SAT scores. The decline in the number of SAT scores reported is consistent with the current decreasing trend of new freshmen with SAT scores either because of alternative standardized test scores or admission policy exemptions.
- Most USM institutions experienced increases in the combined 25th and 75th percentile SAT scores between fall 2012 and fall 2013.
- For the fifth year, four institutions (Salisbury, Towson, UMBC, and UMCP) reported that at least three-quarters of their freshmen class had combined SAT scores greater than 1,000. Based on this distribution, at least 80% of USM New Freshmen with combined SAT scores were above 1,000.

Maryland Public High School Test-Taker Trends (College Board)

- Last year, 39,824 of the 48,106 SAT test takers were Maryland public school students in 2012-2013 – a significant increase (+4%) from previous year according to the College Board. In addition, 34,208 were seniors planning to enter college this academic year (2013-2014).
- Average SAT scores for 2012-13 college bound students from Maryland public high schools decreased by two points in critical reading (487) and decreased by five point in mathematics (493) over the 2011-12 average scores according to The College Board. Maryland's public high school students' average scores are insignificantly different than national averages but are below the Maryland private high school averages.

National Trends from the National Center for Education Statistics (IPEDS)

- Nationally, USM institutions are competitive with respective peer institutions on the 25th and 75th percentiles of math and reading scores. Table 2 displays the most recent IPEDS data for fall 2012 SAT critical reading and mathematics scores. Highlighted are the USM institutions within alphabetical lists of their peer institutions.

SAT Percentile Distributions of First-Time Undergraduates Fall 2009 - 2013

Table 1
Trends in SAT 25th and 75th Percentile Scores
Fall 2009 – Fall 2013

Institution	2009		2010		2011		2012		2013	
	25th	75th	25th	75th	25th	75th	25th	75th	25th	75th
UMCP	1220	1370	1220	1380	1220	1380	1220	1390	1230	1390
UMBC	1080	1270	1110	1290	1120	1280	1130	1300	1130	1300
SU	1060	1190	1050	1210	1090	1200	1100	1205	1100	1210
TU	1000	1150	1000	1150	1010	1160	1010	1150	1010	1160
UB	830	1040	850	1025	840	1040	840	1040	840	1030
FSU	870	1040	880	1070	890	1060	890	1070	880	1060
BSU	800	940	820	940	820	940	830	960	780	930
CSU	810	930	790	910	810	920	820	920	810	930
UMES	760	910	770	920	790	940	790	940	800	940

NOTE: All scores include all first-time, full-time and part-time, degree and non-degree seeking students.

Source: MHEC Form S-11

Table 1 (above) displays the combined SAT scores at the 25th and 75th percentiles for fall 2009 through fall 2013. Figure 1 (below) depicts ranges for the fall 2013 distributions for each institution. Fifty percent of incoming freshmen received SAT scores in the range between the markers on the graph.

Figure 1
University System of Maryland
Fall 2013 SAT Percentiles

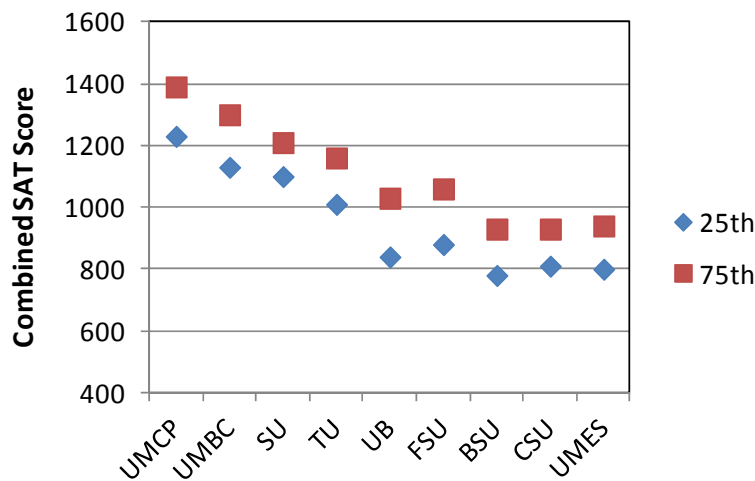


Table 2. Fall 2012 IPEDS SAT Quartiles of Peer Institutions by USM Institutions

<u>Bowie State and Institutional Peers</u>	Math		Reading	
	25th	75th	25th	75th
Alabama A & M University*	370	460	370	455
Alabama State University*	360	480	370	460
Auburn University at Montgomery**	-	-	-	-
Bowie State University	400	490	410	490
California State University-Bakersfield	400	520	390	500
Columbus State University	430	540	440	550
Indiana University-Southeast	420	520	420	530
New Jersey City University	390	490	370	460
Norfolk State University	400	470	400	470
Prairie View A & M University	390	480	370	460
Sul Ross State University*	400	510	360	490
<i>Mean of Peers (excluding USM institution)</i>	<i>396</i>	<i>497</i>	<i>388</i>	<i>486</i>

<u>Coppin State and Institutional Peers</u>	Math		Reading	
	25th	75th	25th	75th
Albany State University	390	460	390	450
Alcorn State University*	400	500	390	470
Augusta State University	440	540	440	540
Cheyney University of Pennsylvania***	-	-	-	-
Coppin State University	400	460	400	470
Henderson State University*	430	520	-	-
Louisiana State University-Shreveport*	520	560	510	560
Nicholls State University*	420	520	440	530
University of North Carolina at Pembroke	430	510	410	490
Virginia State University	390	460	390	460
Western New Mexico University***	-	-	-	-
<i>Mean of Peers (excluding USM institution)</i>	<i>428</i>	<i>509</i>	<i>424</i>	<i>500</i>

<u>Frostburg State and Institutional Peers</u>	Math		Reading	
	25th	75th	25th	75th
Bridgewater State University	460	560	450	550
Clarion University of Pennsylvania	400	520	400	510
East Stroudsburg University of Pennsylvania	450	540	440	520
Frostburg State University	440	540	440	530
Indiana University-South Bend	430	530	420	520
Rhode Island College	410	520	420	520
Sonoma State University	450	560	450	560
SUNY College at Plattsburgh	470	570	460	550
SUNY College at Potsdam***	-	-	-	-
University of Massachusetts-Dartmouth	485	580	460	570
Western Connecticut State University	430	540	450	540
<i>Mean of Peers (excluding USM institution)</i>	<i>443</i>	<i>547</i>	<i>439</i>	<i>538</i>

* Institution reports both SAT and ACT scores in IPEDS, but the majority of students report ACT scores.

** Institution only reports ACT scores in IPEDS.

*** Institution does not report SAT or ACT scores in IPEDS.

Table 2 (cont.) Fall 2012 IPEDS SAT Quartiles of Peer Institutions by USM Institutions

<u>Salisbury Univ. and Institutional Peers</u>	Math		Reading	
	25th	75th	25th	75th
Bloomsburg University of Pennsylvania	460	560	450	540
Millersville University of Pennsylvania	470	570	470	560
Salisbury University	540	620	530	610
Sonoma State University	450	560	450	560
Southeast Missouri State University*	445	615	420	560
SUNY at Fredonia	490	570	480	590
SUNY College at Oswego	530	600	530	600
SUNY College at Plattsburgh	470	570	460	550
University of Massachusetts-Dartmouth	485	580	460	570
University of North Carolina-Wilmington	550	630	540	620
University of Northern Iowa**	-	-	-	-
<i>Mean of Peers (excluding USM institution)</i>	<i>489</i>	<i>588</i>	<i>479</i>	<i>576</i>

<u>Towson Univ. and Institutional Peers</u>	Math		Reading	
	25th	75th	25th	75th
Ball State University	480	580	480	580
California State University-Sacramento	420	540	410	520
East Carolina University	500	570	480	560
Eastern Michigan University*	450	580	440	560
James Madison University	530	620	520	620
Portland State University	460	580	460	590
Towson University	500	600	490	580
University of Massachusetts-Boston	460	585	430	560
University of North Carolina at Charlotte	500	590	480	560
University of Northern Iowa*	460	520	-	-
Western Kentucky University*	430	590	440	580
<i>Mean of Peers (excluding USM institution)</i>	<i>469</i>	<i>576</i>	<i>460</i>	<i>570</i>

<u>Univ. of Baltimore and Institutional Peers</u>	Math		Reading	
	25th	75th	25th	75th
Auburn University at Montgomery**	-	-	-	-
Citadel Military College of South Carolina	500	590	480	580
Governors State University***	-	-	-	-
New Jersey City University	390	490	370	460
Texas A & M University-Corpus Christi	440	550	420	530
University of Baltimore	410	540	430	590
University of Houston-Clear Lake***	-	-	-	-
University of Illinois at Springfield*	465	650	425	590
University of Michigan-Dearborn*	510	680	-	-
University of Wisconsin-Whitewater*	490	550	440	560
Western Connecticut State University	430	540	450	540
<i>Mean of Peers (excluding USM institution)</i>	<i>461</i>	<i>579</i>	<i>431</i>	<i>543</i>

* Institution reports both SAT and ACT scores in IPEDS, but the majority of students report ACT scores.

** Institution only reports ACT scores in IPEDS.

*** Institution does not report SAT or ACT scores in IPEDS.

Table 2 (cont.) Fall 2012 IPEDS SAT Quartiles of Peer Institutions by USM Institutions

<u>UM Baltimore County and Institutional Peers</u>	Math		Reading	
	25th	75th	25th	75th
Clemson University	590	680	550	650
Mississippi State University*	490	620	470	610
New Jersey Institute of Technology	550	660	470	600
Oklahoma State University-Main Campus*	510	620	490	590
University of Arkansas*	520	630	500	610
University of California-Riverside	490	630	460	580
University of California-Santa Cruz	520	640	500	620
University of Maryland-Baltimore County	580	670	550	650
University of Massachusetts Amherst	560	660	530	630
University of Rhode Island	480	590	470	570
University of Wyoming*	490	630	490	600
<i>Mean of Peers (excluding USM institution)</i>	<i>520</i>	<i>636</i>	<i>493</i>	<i>606</i>

<u>UM College Park and Institutional Peers</u>	Math		Reading	
	25th	75th	25th	75th
University of California-Berkeley	650	770	600	720
University of California-Los Angeles	610	740	560	690
University of Illinois at Urbana-Champaign*	680	790	550	680
University of Maryland-College Park	610	720	580	690
University of Michigan-Ann Arbor*	650	760	610	700
University of North Carolina at Chapel Hill	610	700	590	700
<i>Mean of Peers (excluding USM institution)</i>	<i>640</i>	<i>752</i>	<i>582</i>	<i>698</i>

<u>UM Eastern Shore and Institutional Peers</u>	Math		Reading	
	25th	75th	25th	75th
Alabama A & M University*	370	460	370	455
Albany State University	390	460	390	450
Alcorn State University*	400	500	390	470
California State University-Bakersfield	400	520	390	500
Fort Valley State University	390	450	390	460
North Carolina A & T State University	410	500	390	480
Prairie View A & M University	390	480	370	460
South Carolina State University	380	450	370	440
University of Maryland Eastern Shore	390	480	390	480
University of North Carolina at Pembroke	430	510	410	490
Virginia State University	390	460	390	460
<i>Mean of Peers (excluding USM institution)</i>	<i>395</i>	<i>479</i>	<i>386</i>	<i>467</i>

* Institution reports both SAT and ACT scores in IPEDS, but the majority of students report ACT scores.

** Institution only reports ACT scores in IPEDS.

*** Institution does not report SAT or ACT scores in IPEDS.