



TOPIC: Overview of Undergraduate Enrollment, Persistence, and Success at the University System of Maryland

COMMITTEE: Education Policy and Student Life

DATE OF COMMITTEE MEETING: March 11, 2014

SUMMARY: Three annual reports are included under this cover and will be discussed as part of this topic. The three reports are as follows:

- *SAT Percentile Distributions of First-Time Undergraduates;*
- *Retention and Graduation Rates of First-time Full-time Degree Seeking Undergraduates;* and
- *Transfer Students to the University System of Maryland: Patterns of Enrollment and Success.*

When looked at as a whole, the three reports provide a useful overview of undergraduate enrollment within the USM, including the various pipelines that feed undergraduate enrollment, the academic profile of incoming first-time students (as measured by SAT scores), student success and persistence after enrollment, and, in the end, bachelor degree attainment.

For new freshmen, a key admissions component correlated with student success is the entering students' SAT scores. The *SAT Percentile Distributions of First-Time Undergraduates* report presents central tendency data for the SAT scores at each USM institution. The report also provides a context for interpreting those scores by comparing institutional SAT data with those at peer institutions.

The second report, *Retention and Graduation Rates of First-time Full-time Degree Seeking Undergraduates*, examines the level of academic success—as measured by retention and graduation rates—achieved by first-time, full-time students at USM institutions. Key trends in student enrollment and success are broken out and analyzed at both the institutional and Systemwide level.

The third report, *Transfer Students to the University System of Maryland: Patterns of Enrollment and Success*, examines progress within this increasingly important pipeline for enrollment growth. Institutional enrollment and success trends among the transfer population are analyzed and displayed, including changes in the proportion of transfer students to first-time students on USM campuses. Key factors that contribute to transfer success, such as credit attainment prior to transfer or full-time attendance, are also analyzed. Finally, data showing the level of success Maryland Community College transfer students are having at USM's regional centers at Shady Grove and Hagerstown are analyzed.

ALTERNATIVE(S): This report is for information only.

FISCAL IMPACT: This report is for information only.

CHANCELLOR'S RECOMMENDATION: This report is for information only.

COMMITTEE RECOMMENDATION: Information Only

DATE: March 11, 2014

BOARD ACTION:

DATE:

SUBMITTED BY: Joseph F. Vivona

301-445-1923

jvivona@usmd.edu



**TRANSFER STUDENTS TO THE
UNIVERSITY SYSTEM OF
MARYLAND:**

Patterns of Enrollment and Success

Updated through FY 2013

Bowie State University (BSU)
Coppin State University (CSU)
Frostburg State University (FSU)
Salisbury University (SU)
Towson University (TU)
University of Baltimore (UB)
University of Maryland, Baltimore (UMB)
University of Maryland, Baltimore County (UMBC)
University of Maryland, College Park (UMCP)
University of Maryland Eastern Shore (UMES)
University of Maryland University College (UMUC)

**Office of the Chief Operating Officer and
Vice Chancellor for Administration and Finance
University System of Maryland
March 2014**

Highlights:

- 21,889 students transferred to a USM institution in FY 2013 (up 3% over the prior fiscal year number and 8% over the past five years). Approximately 54 percent (11,882) of those transfers came from a Maryland community college.
- The number of Maryland community college students who transferred in FY 2013 increased by 8% (800+) over the FY 2012 number. Over the past five years (FY 2009 - FY 2013) the number of Maryland community college students transferring to a USM institution has increased by nearly 25 percent (+2,414).
- While six of Maryland's 16 public community colleges increased transfers – all within the Baltimore-DC corridor – and supplied 68% of the community college transfers entering a USM institution in FY 2013, that percentage was down from the FY 2009 high of 74%. This trend continued because the most rapid growth in the number of students transferring to a USM institution is occurring at community colleges outside the Baltimore-DC corridor (Frederick, Cecil, Harford, Carroll, Chesapeake, and Southern Maryland).
- The largest proportion of Maryland community college students who transferred to USM institutions in FY 2013 enrolled in the following program areas: business and management (21%), social sciences (11%), computer and information science (11%), education (9%), and the health professions (8%). This was consistent with historical trends.
- 73% of Maryland community college students who transferred to USM institutions in FY 2013 enrolled as full-time students (based on fall 2012 enrollments), up from 70% five years ago. Although it is decreasing, a gap still remains between African-American transfer students who enroll full time (65%) and white transfer students (78% of who enroll full-time after transferring.)
- 82% of Maryland community college students who transferred to a USM institution in FY 2013 entered with either sophomore or junior status (based on fall 2012 enrollment), up two percent over the past five years.
- 52% of the FY 2010 cohort of Maryland community college transfers to USM institutions graduated within four years of transferring (regardless of whether they attended full-time or part-time). When this four-year graduation rate is pared down to just those Maryland community college transfers who attended full-time, it increases to 66%. This is a rate of success equal to the USM's system-wide average for all full-time, first-time new freshmen (based on the most recent graduating cohort).
- Graduation rates for Maryland Community College students enrolled at USM's Regional Higher Education Centers continues to be impressive. The 4-year graduation rates for students who started in fall 2009 were 76% for Hagerstown and 75% for Shady Grove, surpassing the success rates of full-time transfers to USM institutions overall.

Background

The following report provides data on demographic characteristics, enrollment status, enrollment trends, and graduation rates for transfer students to institutions in the University System of Maryland. Most of the data supplied in this report were extracted from the 2013 Transfer Student System (TSS) data file.¹ The TSS was originally designed by the Maryland Higher Education Commission (MHEC), the University System of Maryland (USM), and the Maryland community colleges to provide feedback to the community colleges about the success of their students. The TSS from USM institutions also collects data on students who transferred across USM institutions, from other Maryland institutions, and from out-of-state institutions. Those data are presented in tables that appear in the appendix of this report.

The data affirm that transfer students are a vital and growing segment of our undergraduate population. Because all TSS data are continuously updated by the institutions, the information contained in this report is not comparable to information found in reports from prior years. The information in this report reflects the most recent updates to data from FY 2009 through FY 2013.

For further information, please contact Chad Muntz, cmuntz@usmd.edu, 301-445-2737 or Becky Bell, rbell@usmd.edu, 301-405-2779.

First-time Transfers to USM²

First-time transfers make up a substantial part of newly enrolled undergraduate students at USM institutions. Approximately 21,900 students transferred into USM institutions in FY 2013 (including summer 2012, fall 2012, and spring 2013 semesters) an increase of 500 transfers from FY 2012. Over half of the students who transferred to a USM institution came from a Maryland community college.

For the non-Maryland community college transfers, the “other transfers” included students transferring from other Maryland 4-year institutions as well as 2-year and 4-year out-of-state institutions. In total, the “other transfers” category is nearly 10,000 students, with over 8,000 of these transferring to the USM from out-of-state institutions. The vast majority (72%) of the 10,000 “other transfers” enrolled at UMUC.

The focus on this report will be the Maryland Community College transfers. Institutions have cultivated strong relationships and created strong articulation pathways including 2+2 programs to USM regional centers. Unlike UMUC, Maryland Community College transfers are the vast majority (72%) of the fiscal year transfers to the USM’s traditional institutions.

¹ The TSS data files were matched with the fall Enrollment Information System (EIS) data files to provide additional information on enrollment status and student level upon entry.

² First-time transfers are defined as students transferring for the first time from a higher education institution with 12 or more credits.

First-Time Community College Transfers to the USM in FY 2013

Enrollment Growth

Nearly 12,000 new students transferred from a Maryland community college to a USM institution in FY 2013. Over the past 5 years (FY 2009 – FY 2013), the number of new Maryland community college transfer students has grown 25 percent from 9,468 to 11,882. Those institutions experiencing the most growth in transfers over the past five years were Towson (+959), UMUC (+539), UMBC (+359), UMCP (+272), Salisbury (+184), Frostburg (+89), UMES (+43), UMB (+15), and Bowie (+13). Coppin (-3) and UB (-103) had fewer community college transfers in FY 2013 than FY 2009.

Selected Demographics

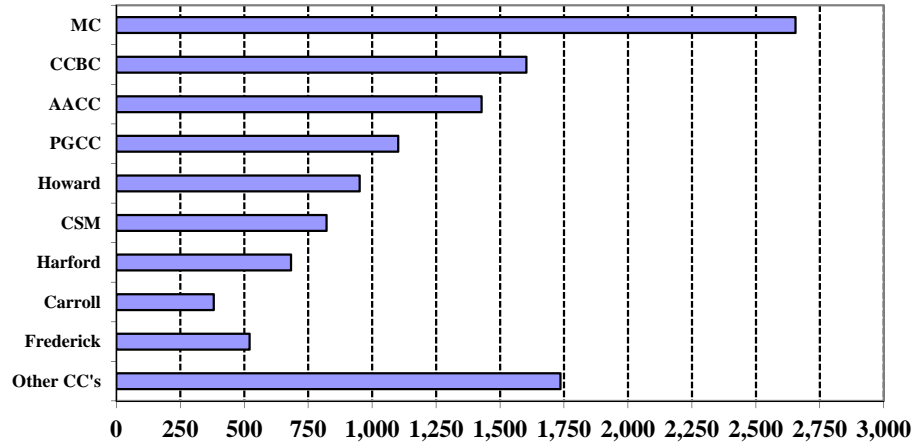
African-American students made up 23 percent of the transfer students from Maryland community colleges entering USM institutions in FY 2013, while Hispanic students comprised seven percent (7%). However, this latter group easily represented the fastest growing segment of the USM community college transfer population, growing 81% over the past five years. Finally, the proportion of community college transfers who were white increased slightly, but, for the second year in a row, represented half (50%) of the community college transfers entering a USM institution. White transfers have steadily decreased as a proportion of the community college student body since FY 2000, when they represented 61% of community college.

Transfer and Enrollment Patterns

Most of the Maryland community college students transferring to the USM in FY 2013 came from just six of the state's 16 public two-year institutions, all located within or close to the Baltimore-Washington Region (See Figure 1). The proportion of transfer students coming from institutions on the outskirts of the Baltimore-Washington region (Frederick, Cecil, Harford, Carroll, Hagerstown, the College of Southern Maryland, and Chesapeake) currently represent just 27% of the Maryland community college transfers but have increased their overall share by 46% over the past five years. Reversing its five-year trend of steady decreases, BCCC increased the number of transfers by 33 over FY 2012.

The five USM institutions enrolling the largest share of new Maryland community college transfers were: Towson (2,848), UMUC (2,840), UMCP (1,930), UMBC (1,418), and Salisbury (841). Together, these five institutions enrolled 83 percent of all Maryland community college transfers to the USM in FY 2013.

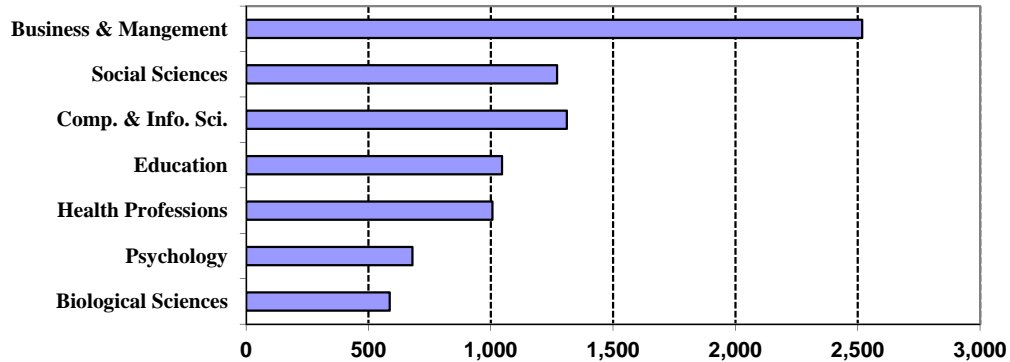
Figure 1
Maryland Community College Transfers to USM Institutions
FY 2013



Programs of Study

Of the Maryland community college students who transferred to a USM institution in FY 2013, 21% entered programs in business and management, 11% in the social sciences, 11% in computer and information science, 9% in education, 8% in the health professions, 6% in Psychology, and 5% in Biological Sciences. Five percent of these students had an undeclared major.

Figure 2
Maryland Community College Transfers to USM Institutions
By Program Area at Time of Transfer
FY 2012



Fall Attendance Patterns and Student Level

Sixty-four percent of all Maryland community college students who transferred to USM institutions in FY 2013 did so in the fall 2012 semester (down from 67% last year). Of those community college transfer students who entered in fall 2012, 73 percent attended on a full-time basis, an increase of two percent. A positive trend has been the percentage of African-American transfer students attending full-time, which increased five percent to 65 percent but remained

below the 78 percent level for white transfer students. Students that attend at a full-time status are more likely to complete within 4 years.

The largest proportion of Maryland community college students who transferred to USM institutions in FY 2013 entered as either sophomores or juniors; the 82% of transfers entering at the sophomore/junior level is a five year high. For Fiscal 2013, 75% of African-American community college transfer students entered as sophomores or juniors (+7% over last year) compared to 87% of white students. The percentage of students entering with more credits is a positive one because it contributes to decreased time to degree, increased efficiency, and higher success rates.

Graduation Rates

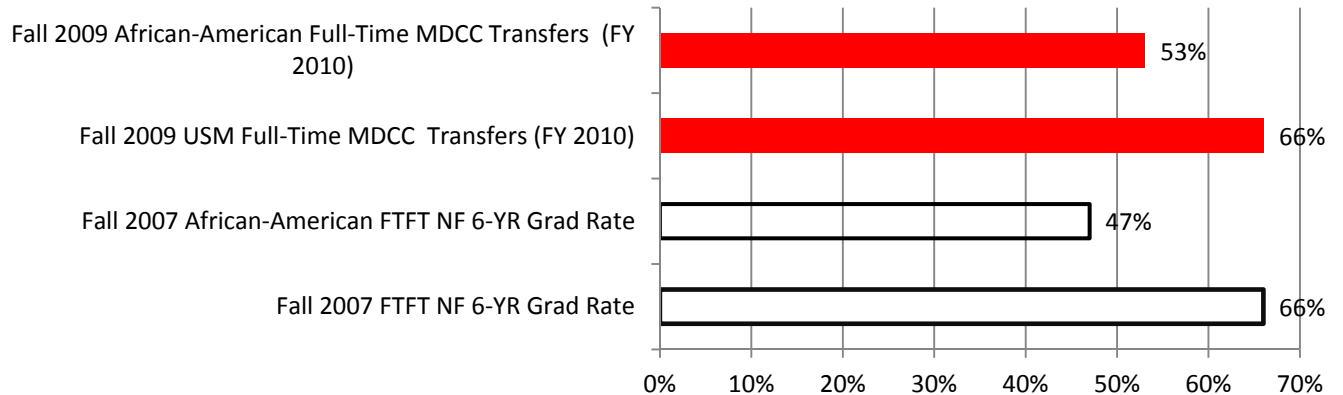
Of those Maryland community college transfers who enrolled in FY 2010, 52% graduated within four years from any USM institution. The graduation rate of Maryland community college transfers to the USM after four years was below that of first-time, full-time new freshmen after six years (the 6-year graduation rate of the fall 2007 new freshmen cohort was 66% anywhere at USM). However, given the fact that the transfer rate includes those attending part time as well as full time, this lower graduation rate is to be expected.

Attendance status appeared to impact graduation rates for transfer students significantly. Transfers students attending part time made up 30% of the fall 2009 student cohort in FY 2010. If the four-year graduation rate excluded these part-time students, however, and was calculated using only those transfers who attended full time, the graduation rate was higher than for the new transfer cohort (66% rate for the fall 2009 full time Maryland community college transfers comparable to the 66% rate of the fall 2007 full time new freshmen six year rate anywhere at USM).

Of those African-American community college transfers who enrolled at a USM institution in FY 2010, 38% graduated within four years. In total, 42% of the African-American community college transfers attended part-time, of which the largest proportion are UMUC students. After removing part-time students, the fall 2009 African-American transfer 4-year graduation rate increased to 53%, which was six points higher than the fall 2007 first-time full-time African American new freshmen cohort at any USM institution.

The lower overall community college transfer graduation rate is mostly explained by the large numbers of part-time community college transfer students (Appendix Table 10). Although there has been a significant portion of Maryland Community College Students attending part time, in recent years, the portion of full time students has been increasing. This is encouraging because the future time-to-degree ratio for students will be positively affected by the addition of more full-time transfer students, as well as other improvements in efficiency that contribute to increases in degree production.

Figure 3
Maryland Community College Transfers and USM New Freshmen Graduation Rates
At Any USM Institution
(New Transfer 4 Year VS New Freshmen 6 Year)



Regional Centers—Universities at Shady Grove and USM-Hagerstown

Another avenue of success for Maryland community college transfers is enrolling in programs at the USM regional centers. The first cohort available to measure the four-year graduation rate was the FY 2009 group of transfers who registered for at least one course at one of the regional centers. For the purposes of this analysis, the regional center cohort was defined as any Maryland community college transfer who enrolled in at least one regional center course in the fall semester of the fiscal year of transfer. The graduation rates for these students are found in the Appendix Table 10. It is important to note that the students identified in these cohorts are a subset of the total population of Maryland community college transfers who have been identified and discussed earlier in this report. It is also important to note that the regional center students are, and will continue to be, included in the institutional numbers presented in previous sections of this report, as they have been in all previous transfer reports.

As the data show (refer to Table 10), the number of Maryland community college transfers at the two regional centers has been growing. The graduation rates are also encouraging, with over 40 percent of the cohort graduating within two years for both Hagerstown and Shady Grove (compared to a rate of 11 percent for transfers at USM campuses overall). The most recent four-year graduation data available for analysis was the FY 2010 cohort of students that began in fall 2009. Based on this cohort, the data showed a four-year graduation rate of 76% for Hagerstown and 75% for Shady Grove. This finding means that students taking courses at the regional centers are graduating at the same or higher rates than first-time, full-time new freshmen for USM institutions overall (the rate for the fall 2007 cohort of first-time, full-time freshmen was 66% at any USM institution) and at the same a higher rate than for those Maryland community college transfers attending full time (the rate for the USM as a whole was 66%). Thus, the regional centers have increased not just the capacity of the USM but its overall efficiency as well.

APPENDIX

Table 1
 University System of Maryland Transfer Students
 By Type of Institution Transferred From
 FY 2013

Number of Transfers

	MD Comm Coll.	USM Inst.	MSU or SMCM	MD Private	Out-of-State	Total Transfers
Bowie	353	59	23	11	258	704
Coppin	238	30	18	11	116	413
Frostburg	412	32	2	4	234	684
Salisbury	841	77	5	32	161	1,116
Towson	2,848	115	25	56	411	3,455
UB	690	80	19	28	173	990
UMB	177	78	3	8	118	384
UMBC	1,418	137	18	38	346	1,957
UMCP	1,930	212	8	25	515	2,690
UMES	135	35	1	6	61	238
UMUC	2,840	478	57	63	5,820	9,258
USM	11,882	1,333	179	282	8,213	21,889

Percent of Transfers

	MD Comm Coll.	USM Inst.	MSU or SMCM	MD Private	Out-of-State	Total Transfers
Bowie	50%	8%	3%	2%	37%	100%
Coppin	58%	7%	4%	3%	28%	100%
Frostburg	60%	5%	0%	1%	34%	100%
Salisbury	75%	7%	0%	3%	14%	100%
Towson	82%	3%	1%	2%	12%	100%
UB	70%	8%	2%	3%	17%	100%
UMB	46%	20%	1%	2%	31%	100%
UMBC	72%	7%	1%	2%	18%	100%
UMCP	72%	8%	0%	1%	19%	100%
UMES	57%	15%	0%	3%	26%	100%
UMUC	31%	5%	1%	1%	63%	100%
USM	54%	6%	1%	1%	38%	100%

Note: Transfers are the number of undergraduates enrolled for the first time with 12 or more credits.

MSU=Morgan State University; SMCM=St. Mary's College of Maryland

Source: TSS

Table 2
 University System of Maryland
 First-time Transfers to USM Institutions
 FY 2009 - 2013 Cohorts

	FY 2009	FY 2010	FY 2011	FY 2012	FY 2013	FY 09-13 Δ Chg.
MD Comm College % of Total	9,468 51%	9,456 50%	10,029 52%	11,033 52%	11,882 54%	25%
USM Institutions % of Total	1,279 7%	1,378 7%	1,432 7%	1,405 7%	1,333 6%	4%
MSU & SMCM % of Total	154 1%	135 1%	139 1%	183 1%	179 1%	16%
Md Private Inst. % of Total	181 1%	209 1%	194 1%	260 1%	282 1%	56%
Out-of-State Inst. & Unk % of Total	7,547 41%	7,656 41%	7,448 39%	8,407 39%	8,213 38%	9%
Total % of Total	18,629 100%	18,834 100%	19,242 100%	21,288 100%	21,889 100%	17%

MSU=Morgan State University; SMCM=St. Mary's College of Maryland

Source: TSS

Table 3
 University System of Maryland
 Maryland Community College Transfers by Ethnicity
 FY 2009 - FY 2013

	FY 2009	FY 2010	FY 2011*	FY 2012*	FY 2013*	FY 09-13 Δ Chg.
African-American % of Total	2,231 24%	2,266 24%	2,275 23%	2,614 24%	2,773 23%	24%
Hispanic % of Total	473 5%	507 5%	707 7%	957 9%	857 9%	81%
Other Minority % of Total	835 9%	795 8%	1,070 11%	1,283 12%	1,337 12%	60%
White % of Total	4,766 50%	4,808 51%	5,384 54%	5,396 49%	5,910 49%	24%
Other/Unknown % of Total	1,163 12%	1,080 11%	593 6%	783 7%	1,005 7%	-14%
Total % of Total	9,468 100%	9,456 100%	10,029 100%	11,033 100%	11,882 100%	25%

Note: Other includes foreign students

* Race/Ethnicity categories were changed to align with new federal guidelines. Starting in FY 2011, Other Minority includes American Indians, Pacific Islanders, Asians and students of multiple races.

Source: TSS

Table 4
University System of Maryland
Maryland Community College Transfers By Institution
FY 2009 - 2013 Cohorts

	FY 2009	FY 2010	FY 2011	FY 2012	FY 2013	Avg. Annual Change	FY 12-13 Δ Chg.
Bowie	292	279	238	315	353	3.9%	12%
Coppin	242	199	200	236	238	-0.3%	1%
Frostburg	323	344	354	379	412	5.0%	9%
Salisbury	657	632	673	736	841	5.1%	14%
Towson	1,889	1,607	2,017	2,430	2,848	8.6%	17%
UB	793	753	664	654	690	-2.7%	6%
UMB	162	164	128	137	177	1.8%	29%
UMBC	1,059	1,181	1,267	1,368	1,418	6.0%	4%
UMCP	1,658	1,578	1,665	1,695	1,930	3.1%	14%
UMES	92	97	73	86	135	8.0%	57%
UMUC	2,301	2,622	2,750	2,997	2,840	4.3%	-5%
USM	9,468	9,456	10,029	11,033	11,882	4.6%	8%

Source: TSS

Table 5
University System of Maryland
Maryland Community College Transfers By Sending Institution
FY 2009 - FY 2013

	FY 2009	FY 2010	FY 2011	FY 2012	FY 2013	Avg. Annual Change	FY 12-13 Δ Chg.
Allegany	110	142	146	150	154	7.0%	3%
Anne Arundel	1,279	1,175	1,349	1,373	1,428	2.2%	4%
Baltimore City	452	438	364	348	381	-3.4%	9%
Carroll	279	222	291	525	606	16.8%	15%
CCBC	1,408	1,405	1,430	1,504	1,603	2.6%	7%
Cecil	71	76	101	92	111	9.3%	21%
CSM	635	693	702	751	822	5.3%	9%
Chesapeake	159	185	159	188	198	4.5%	5%
Frederick	372	372	430	466	521	7.0%	12%
Garrett	54	70	54	104	142	21.3%	37%
Hagerstown	173	170	200	218	217	4.6%	0%
Harford	475	481	540	676	683	7.5%	1%
Howard	675	671	716	860	951	7.1%	11%
Montgomery	2,287	2,241	2,409	2,465	2,655	3.0%	8%
Prince George's	872	889	912	1,083	1,102	4.8%	2%
Wor-Wic	167	226	226	230	308	13.0%	34%
Total	9,468	9,456	10,029	11,033	11,882	4.6%	8%

Source: TSS

Table 6
 University System of Maryland
 Maryland Community College Transfers By Institution
 2013 Cohort

Sending Inst	Receiving Institution											USM
	Bowie	Coppin	Frostburg	Salisbury	Towson	UB	UMB	UMBC	UMCP	UMES	UMUC	
Allegany	1	0	118	2	12	0	2	3	2	1	13	154
Anne Arundel	28	8	22	90	294	69	35	227	220	8	427	1,428
Baltimore City	6	107	4	2	46	105	8	30	7	6	60	381
Carroll	1	1	0	24	447	25	2	48	27	0	31	606
CCBC	8	76	1	26	654	261	22	294	52	6	203	1,603
Cecil	1	1	8	27	43	4	3	6	4	1	13	111
CSM	28	2	0	89	124	12	3	41	133	7	383	822
Chesapeake	3	0	5	105	22	0	2	8	8	4	41	198
Frederick	1	2	54	51	101	10	11	61	96	4	130	521
Garrett	0	0	46	0	85	0	0	0	1	0	10	142
Hagerstown	2	0	68	21	37	7	2	8	15	1	56	217
Harford	1	8	16	45	352	52	7	52	65	2	83	683
Howard	18	11	20	42	226	41	16	235	195	5	142	951
Montgomery	32	4	36	83	308	91	55	353	952	42	699	2,655
Prince George's	222	18	14	21	78	12	7	50	149	18	513	1,102
Wor-Wic	1	0	0	213	19	1	2	2	4	30	36	308
Total	353	238	412	841	2,848	690	177	1,418	1,930	135	2,840	11,882

Source: TSS

Table 7
 University System of Maryland
 Maryland Community College Transfer Student Program Area
 FY 2009 - 2013 Cohorts

	FY 2009	FY 2010	FY 2011	FY 2012	FY 2013	FY 13 % of total	FY 09-13 Δ Chg.
Agric. & Nat. Res.	89	83	122	110	138	1%	55%
Arch. & Envtl. Des.	0	0	0	0	0	0%	--
Area Studies	26	25	22	18	30	0%	15%
Biological Sciences	483	458	400	568	587	5%	22%
Business Managmt.	2,333	2,182	2,221	2,421	2,518	21%	8%
Communications	375	388	394	501	548	5%	46%
Comp. & Info. Sci.	754	859	1,030	1,249	1,311	11%	74%
Education	704	746	785	900	1,046	9%	49%
Engineering	230	245	277	266	348	3%	51%
Fine & Applied Arts	242	267	307	322	338	3%	40%
Foreign Languages	56	54	47	57	65	1%	16%
Health Professions	626	576	661	787	1,007	8%	61%
Home Economics	46	34	28	24	23	0%	-50%
Law	110	98	108	98	74	1%	-33%
Letters	299	278	287	276	294	2%	-2%
Mathematics	66	72	59	91	116	1%	76%
Physical Science	89	102	112	101	113	1%	27%
Psychology	514	542	641	699	680	6%	32%
Public Affairs	413	433	419	451	485	4%	17%
Social Sciences	1,073	1,241	1,238	1,264	1,271	11%	18%
Interdisciplinary Studies	299	282	300	196	249	2%	-17%
Natural Sci. Tech.	5	3	3	10	11	0%	120%
Undeclared	636	488	568	624	630	5%	-1%
Total	9,468	9,456	10,029	11,033	11,882	100%	25%

Source: TSS

Table 8
 University System of Maryland
 Maryland Community College Transfers Attendance Patterns
 FY 2009 - 2013 Cohorts

All Transfer Students					
	Fall 2008	Fall 2009	Fall 2010	Fall 2011	Fall 2012
Full-Time					
N	4,479	4,294	4,783	5,264	5,556
%	70%	70%	70%	72%	73%
Part-Time					
N	1,947	1,867	2,032	2,090	2,010
%	30%	30%	30%	28%	27%
Total	6,426	6,161	6,815	7,354	7,566

African-American Transfer Students					
	Fall 2008	Fall 2009	Fall 2010	Fall 2011	Fall 2012
Full-Time					
N	861	848	849	1,131	1,222
%	58%	58%	57%	60%	65%
Part-Time					
N	635	620	637	742	647
%	42%	42%	43%	40%	35%
Total	1,496	1,468	1,486	1,873	1,869

White Transfer Students					
	Fall 2008	Fall 2009	Fall 2010	Fall 2011	Fall 2012
Full-Time					
N	2,547	2,430	2,849	2,925	2,988
%	76%	76%	76%	76%	78%
Part-Time					
N	818	780	913	936	843
%	24%	24%	24%	24%	22%
Total	3,365	3,210	3,762	3,861	3,831

Note: Attendance status is based upon the EIS file and only reflects students who transferred in the Fall term. The totals are less than reported elsewhere in this report.
 Source: EIS and TSS

Table 9
University System of Maryland
Maryland Community College Transfer Student Level
FY 2009 - 2013 Cohorts

Number of Transfer Students

	All Transfer Students				
	Fall 2008	Fall 2009	Fall 2010	Fall 2011	Fall 2012
Freshmen	1,121	1,119	1,106	1,381	1,115
Sophomore	2,475	2,229	2,486	2,538	2,741
Junior	2,663	2,651	3,013	3,272	3,473
Senior	107	117	158	188	221
Unclassified	60	45	52	58	16
Total	6,426	6,161	6,815	7,437	7,566

Percent of Transfer Students

	All Transfer Students				
	Fall 2008	Fall 2009	Fall 2010	Fall 2011	Fall 2012
Freshmen	17%	18%	16%	19%	15%
Sophomore	39%	36%	36%	34%	36%
Junior	41%	43%	44%	44%	46%
Senior	2%	2%	2%	3%	3%
Unclassified	1%	1%	1%	1%	0%
Total	100%	100%	100%	100%	100%

African-American Transfer Students

	African-American Transfer Students				
	Fall 2008	Fall 2009	Fall 2010	Fall 2011	Fall 2012
Freshmen	371	368	377	498	424
Sophomore	481	471	461	590	664
Junior	597	578	593	716	730
Senior	30	33	43	48	45
Unclassified	17	18	12	21	6
Total	1,496	1,468	1,486	1,873	1,869

African-American Transfer Students

	African-American Transfer Students				
	Fall 2008	Fall 2009	Fall 2010	Fall 2011	Fall 2012
Freshmen	25%	25%	25%	27%	23%
Sophomore	32%	32%	31%	32%	36%
Junior	40%	39%	40%	38%	39%
Senior	2%	2%	3%	3%	2%
Unclassified	1%	1%	1%	1%	0%
Total	100%	100%	100%	100%	100%

White Transfer Students

	White Transfer Students				
	Fall 2008	Fall 2009	Fall 2010	Fall 2011	Fall 2012
Freshmen	505	489	469	569	389
Sophomore	1,411	1,221	1,432	1,364	1,412
Junior	1,381	1,423	1,763	1,815	1,918
Senior	46	57	69	91	105
Unclassified	22	20	29	22	7
Total	3,365	3,210	3,762	3,861	3,831

White Transfer Students

	White Transfer Students				
	Fall 2008	Fall 2009	Fall 2010	Fall 2011	Fall 2012
Freshmen	15%	15%	12%	15%	10%
Sophomore	42%	38%	38%	35%	37%
Junior	41%	44%	47%	47%	50%
Senior	1%	2%	2%	2%	3%
Unclassified	1%	1%	1%	1%	0%
Total	100%	100%	100%	100%	100%

Note: Attendance status is based upon the EIS file and only reflects students who transferred in the Fall term. The totals are less than reported elsewhere in this report.

Source: EIS and TSS

Table 10
 University System of Maryland
 Maryland Community College Transfer Student Four-Year Graduation Rates
 FY 2003 - 2012 Cohorts

Number of Community College Transfers

	Cohort Size	Graduation Rates			
		2-year	3-year	4-year	5-year
USM					
FY 2003	7,063	644	2,447	3,598	4,095
FY 2004	7,706	769	2,733	3,959	4,487
FY 2005	8,048	821	2,696	3,888	4,437
FY 2006	8,526	890	2,987	4,210	4,676
FY 2007	8,974	920	3,004	4,299	4,928
FY 2008	8,993	969	3,188	4,575	5,169
FY 2009	9,468	1,134	3,544	4,984	5,609
FY 2010	9,456	1,120	3,488	4,917	
FY 2011	10,029	1,239	3,961		
FY 2012	11,033	1,483			
USM w/out UMUC					
FY 2003	5,626	563	2,170	3,166	3,570
FY 2004	5,950	661	2,369	3,401	3,807
FY 2005	6,190	720	2,354	3,343	3,770
FY 2006	6,471	794	2,647	3,716	4,089
FY 2007	6,603	809	2,660	3,791	4,236
FY 2008	6,875	878	2,867	4,045	4,487
FY 2009	7,167	1,004	3,111	4,309	4,778
FY 2010	6,834	983	2,989	4,145	
FY 2011	7,279	1,051	3,370		
FY 2012	8,036	1,248			
Bowie					
FY 2003	340	33	109	166	198
FY 2004	264	25	90	138	160
FY 2005	453	29	89	149	185
FY 2006	290	17	77	130	154
FY 2007	281	29	84	133	159
FY 2008	302	26	81	127	159
FY 2009	292	16	72	127	154
FY 2010	279	16	76	126	
FY 2011	238	17	66		
FY 2012	315	26			
Coppin					
FY 2003	140	6	24	43	53
FY 2004	132	8	24	43	57
FY 2005	197	12	54	77	91
FY 2006	219	4	33	74	89
FY 2007	214	7	35	60	80
FY 2008	199	18	51	80	103
FY 2009	242	15	40	76	102
FY 2010	199	18	55	73	
FY 2011	200	35	72		
FY 2012	236	37			

Percent Graduating

	Graduation Rates			
	2-year	3-year	4-year	5-year
USM				
FY 2003	9%	35%	51%	58%
FY 2004	10%	35%	51%	58%
FY 2005	10%	33%	48%	55%
FY 2006	10%	35%	49%	55%
FY 2007	10%	33%	48%	55%
FY 2008	11%	35%	51%	57%
FY 2009	12%	37%	53%	59%
FY 2010	12%	37%	52%	
FY 2011	12%	39%		
FY 2012	13%			
USM w/out UMUC				
FY 2003	10%	39%	56%	63%
FY 2004	11%	40%	57%	64%
FY 2005	12%	38%	54%	61%
FY 2006	12%	41%	57%	63%
FY 2007	12%	40%	57%	64%
FY 2008	13%	42%	59%	65%
FY 2009	14%	43%	60%	67%
FY 2010	14%	44%	61%	
FY 2011	14%	46%		
FY 2012	16%			
Bowie				
FY 2003	10%	32%	49%	58%
FY 2004	9%	34%	52%	61%
FY 2005	6%	20%	33%	41%
FY 2006	6%	27%	45%	53%
FY 2007	10%	30%	47%	57%
FY 2008	9%	27%	42%	53%
FY 2009	5%	25%	43%	53%
FY 2010	6%	27%	45%	
FY 2011	7%	28%		
FY 2012	8%			
Coppin				
FY 2003	4%	17%	31%	38%
FY 2004	6%	18%	33%	43%
FY 2005	6%	27%	39%	46%
FY 2006	2%	15%	34%	41%
FY 2007	3%	16%	28%	37%
FY 2008	9%	26%	40%	52%
FY 2009	6%	17%	31%	42%
FY 2010	9%	28%	37%	
FY 2011	18%	36%		
FY 2012	16%			

Table 10
 University System of Maryland
 Maryland Community College Transfer Student Four-Year Graduation Rates
 FY 2003 - 2012 Cohorts

Number of Community College Transfers

	Cohort Size	Graduation Rates			
		2-year	3-year	4-year	5-year
Frostburg					
FY 2003	335	41	119	176	198
FY 2004	285	33	106	152	165
FY 2005	268	26	104	144	160
FY 2006	277	37	112	152	172
FY 2007	283	41	120	165	181
FY 2008	313	61	150	199	220
FY 2009	323	68	147	198	212
FY 2010	344	61	155	202	
FY 2011	354	67	177		
FY 2012	379	77			
Salisbury					
FY 2003	559	49	233	353	390
FY 2004	519	66	224	331	363
FY 2005	513	50	202	314	348
FY 2006	569	61	253	365	402
FY 2007	601	57	251	371	402
FY 2008	524	76	270	361	387
FY 2009	657	100	319	444	478
FY 2010	632	99	300	430	
FY 2011	673	92	311		
FY 2012	736	130			
Towson					
FY 2003	1,214	128	550	763	851
FY 2004	1,335	149	594	837	907
FY 2005	1,429	167	607	863	960
FY 2006	1,483	178	666	909	1001
FY 2007	1,630	211	706	1027	1116
FY 2008	1,729	223	758	1077	1179
FY 2009	1,889	274	871	1188	1315
FY 2010	1,607	258	775	1051	
FY 2011	2,017	300	1001		
FY 2012	2,430	419			
UB					
FY 2003	490	56	191	243	274
FY 2004	616	67	216	285	324
FY 2005	677	70	206	280	330
FY 2006	902	108	316	412	464
FY 2007	872	94	288	389	448
FY 2008	843	85	282	402	456
FY 2009	793	76	290	381	440
FY 2010	753	82	279	382	
FY 2011	664	55	243		
FY 2012	654	61			

Percent Graduating

	Graduation Rates			
	2-year	3-year	4-year	5-year
Frostburg				
FY 2003	12%	36%	53%	59%
FY 2004	12%	37%	53%	58%
FY 2005	10%	39%	54%	60%
FY 2006	13%	40%	55%	62%
FY 2007	14%	42%	58%	64%
FY 2008	19%	48%	64%	70%
FY 2009	21%	46%	61%	66%
FY 2010	18%	45%	59%	
FY 2011	19%	50%		
FY 2012	20%			
Salisbury				
FY 2003	9%	42%	63%	70%
FY 2004	13%	43%	64%	70%
FY 2005	10%	39%	61%	68%
FY 2006	11%	44%	64%	71%
FY 2007	9%	42%	62%	67%
FY 2008	15%	52%	69%	74%
FY 2009	15%	49%	68%	73%
FY 2010	16%	47%	68%	
FY 2011	14%	46%		
FY 2012	18%			
Towson				
FY 2003	11%	45%	63%	70%
FY 2004	11%	44%	63%	68%
FY 2005	12%	42%	60%	67%
FY 2006	12%	45%	61%	67%
FY 2007	13%	43%	63%	68%
FY 2008	13%	44%	62%	68%
FY 2009	15%	46%	63%	70%
FY 2010	16%	48%	65%	
FY 2011	15%	50%		
FY 2012	17%			
UB				
FY 2003	11%	39%	50%	56%
FY 2004	11%	35%	46%	53%
FY 2005	10%	30%	41%	49%
FY 2006	12%	35%	46%	51%
FY 2007	11%	33%	45%	51%
FY 2008	10%	33%	48%	54%
FY 2009	10%	37%	48%	55%
FY 2010	11%	37%	51%	
FY 2011	8%	37%		
FY 2012	9%			

Table 10
 University System of Maryland
 Maryland Community College Transfer Student Four-Year Graduation Rates
 FY 2003 - 2012 Cohorts

Number of Community College Transfers						Percent Graduating				
	Cohort Size	Graduation Rates					Graduation Rates			
		2-year	3-year	4-year	5-year		2-year	3-year	4-year	5-year
UMB						UMB				
FY 2003	131	63	105	112	114	48%	80%	85%	87%	
FY 2004	149	73	119	122	123	49%	80%	82%	83%	
FY 2005	146	75	122	130	135	51%	84%	89%	92%	
FY 2006	136	67	116	122	125	49%	85%	90%	92%	
FY 2007	156	67	125	127	130	43%	80%	81%	83%	
FY 2008	164	60	130	137	137	37%	79%	84%	84%	
FY 2009	162	63	115	128	129	39%	71%	79%	80%	
FY 2010	164	77	129	135		47%	79%	82%		
FY 2011	128	51	93			40%	73%			
FY 2012	137	48				35%				
UMBC						UMBC				
FY 2003	1,094	48	316	504	593	4%	29%	46%	54%	
FY 2004	1,040	73	315	509	608	7%	30%	49%	58%	
FY 2005	1,030	83	324	502	578	8%	31%	49%	56%	
FY 2006	947	70	304	480	515	7%	32%	51%	54%	
FY 2007	961	69	307	453	558	7%	32%	47%	58%	
FY 2008	1,052	89	329	524	603	8%	31%	50%	57%	
FY 2009	1,059	83	350	548	627	8%	33%	52%	59%	
FY 2010	1,181	83	365	596		7%	31%	50%		
FY 2011	1,267	102	441			8%	35%			
FY 2012	1,368	117				8%				
UMCP						UMCP				
FY 2003	1,295	136	514	797	889	11%	40%	62%	69%	
FY 2004	1,486	165	651	943	1,050	11%	44%	63%	71%	
FY 2005	1,341	201	619	834	923	15%	46%	62%	69%	
FY 2006	1,571	246	750	1041	1127	16%	48%	66%	72%	
FY 2007	1,557	229	731	1046	1136	15%	47%	67%	73%	
FY 2008	1,652	232	784	1088	1188	14%	47%	66%	72%	
FY 2009	1,658	300	873	1175	1273	18%	53%	71%	77%	
FY 2010	1,578	280	830	1117		18%	53%	71%		
FY 2011	1,665	314	931			19%	56%			
FY 2012	1,695	319				19%				
UMES						UMES				
FY 2003	28	3	9	9	10	11%	32%	32%	36%	
FY 2004	124	2	30	41	50	2%	24%	33%	40%	
FY 2005	136	7	27	50	60	5%	20%	37%	44%	
FY 2006	77	6	20	31	40	8%	26%	40%	52%	
FY 2007	48	5	13	20	26	10%	27%	42%	54%	
FY 2008	97	8	32	50	55	8%	33%	52%	57%	
FY 2009	92	9	34	44	48	10%	37%	48%	52%	
FY 2010	97	9	25	33		9%	26%	34%		
FY 2011	73	18	35			25%	48%			
FY 2012	86	14				16%				

Table 10
 University System of Maryland
 Maryland Community College Transfer Student Four-Year Graduation Rates
 FY 2003 - 2012 Cohorts

Number of Community College Transfers

	Cohort Size	Graduation Rates			
		2-year	3-year	4-year	5-year
UMUC					
FY 2003	1,437	81	277	432	525
FY 2004	1,756	108	364	558	680
FY 2005	1,858	101	342	545	667
FY 2006	2,055	96	340	494	587
FY 2007	2,371	111	344	508	692
FY 2008	2,118	91	321	530	682
FY 2009	2,301	130	433	675	831
FY 2010	2,622	137	499	772	
FY 2011	2,750	188	591		
FY 2012	2,997	235			
Hagerstown*					
FY 2009	50	18	24	31	33
FY 2010	42	18	29	32	
FY 2011	71	29	46		
FY 2012	77	38			
Shady Grove*					
FY 2009	400	184	270	297	314
FY 2010	479	211	321	359	
FY 2011	438	200	299		
FY 2012	534	245			

Percent Graduating

	Graduation Rates			
	2-year	3-year	4-year	5-year
UMUC				
FY 2003	6%	19%	30%	37%
FY 2004	6%	21%	32%	39%
FY 2005	5%	18%	29%	36%
FY 2006	5%	17%	24%	29%
FY 2007	5%	15%	21%	29%
FY 2008	4%	15%	25%	32%
FY 2009	6%	19%	29%	36%
FY 2010	5%	19%	29%	
FY 2011	7%	21%		
FY 2012	8%			
Hagerstown				
FY 2009	36%	48%	62%	66%
FY 2010	43%	69%	76%	
FY 2011	41%	65%		
FY 2012	49%			
Shady Grove				
FY 2009	46%	68%	74%	79%
FY 2010	44%	67%	75%	
FY 2011	46%	68%		
FY 2012	46%			

Source: MHEC TSS and DIS files

* USM Regional Center Files (EIS and Regional Center Registration) matched to TSS Cohorts in same fiscal year and institution only.

Table 11
 University System of Maryland
 Maryland Community College Transfer Student Four-Year Graduation Rates
 FY 2010 Cohort

Receiving Inst	All Transfer Students		African-American Transfer Students		White Transfer Students	
	Cohort N	Four-Year Graduation Rate	Cohort N	Four-Year Graduation Rate	Cohort N	Four-Year Graduation Rate
Bowie	279	45%	234	43%	21	57%
Coppin	199	37%	176	36%	6	50%
Frostburg	344	59%	30	37%	297	61%
Salisbury	632	68%	31	68%	527	68%
Towson	1,607	65%	179	55%	1,116	69%
UB	753	51%	310	45%	272	54%
UMB	164	82%	30	83%	58	83%
UMBC	1,181	50%	191	39%	596	55%
UMCP	1,578	71%	233	66%	827	72%
UMES	97	34%	34	35%	45	22%
UMUC	2,622	29%	818	21%	1,043	33%
USM	9,456	52%	2,266	38%	4,808	58%

Source: TSS and DIS