

**NSLVE Student Voting Rates
in
University System of Maryland**

National Study of Learning,
Voting, and Engagement
includes data from:

11

University System of
Maryland
Institutions

Reference Group in NSLVE:

498

4-Year Public Institutions

1046

Total NSLVE Institutions

40 million

Total NSLVE Students

List of NSLVE institutions in the System

BOWIE STATE UNIVERSITY

COPPIN STATE UNIVERSITY

FROSTBURG STATE UNIVERSITY

SALISBURY UNIVERSITY

TOWSON UNIVERSITY

UNIVERSITY OF BALTIMORE

UNIVERSITY OF MARYLAND - BALTIMORE COUNTY

UNIVERSITY OF MARYLAND - COLLEGE PARK

UNIVERSITY OF MARYLAND EASTERN SHORE

UNIVERSITY OF MARYLAND-UNIVERSITY COLLEGE

UNIVERSITY OF MARYLAND, BALTIMORE

University System of Maryland

2019-11-05

	Election Year		2016
	2014	2018	
Total student enrollment	160,917	165,209	162,467
Ineligible to vote because too young	1,431	633	1,006
IPEDS estimated non-resident aliens	7,926	8,982	8,721
FERPA records blocked	422	806	840
Number of students who are registered	107,012	116,632	117,327
Number of students who voted	32,984	64,129	83,593
Total eligible students	159,057	163,757	160,609
Total eligible female students	25,549	52,498	30,938
Total eligible male students	28,097	51,386	31,671
Total eligible gender unknown	105,411	59,873	98,000
Gender data known (%)	34	63	39
Total eligible American Indian/ Alaskan Native students	18	233	22
Total eligible Asian students	331	7,909	389
Total eligible Black students	2,446	17,962	3,592
Total eligible Hispanic students	30	5,085	273
Total eligible Native Hawaiiin/Pacific Islander students	12	214	11
Total eligible Two or More racial identification	0	5,974	214
Total eligible White students	2,530	37,242	4,833
Total eligible race unknown	153,690	89,138	151,103
Race data known (%)	3	46	6

+ 19.6

Percentage Point
Change in
Voting Rate

+ 4.1

Percentage Point
Change in
Registration Rate

+ 23.9

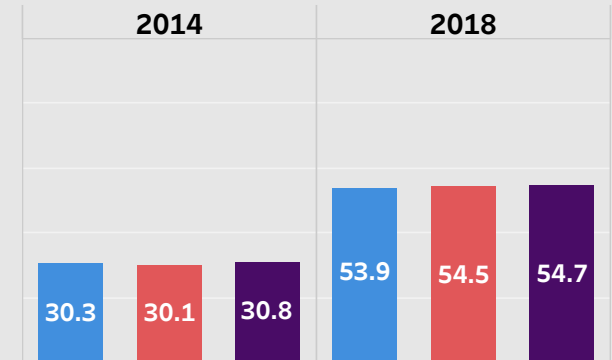
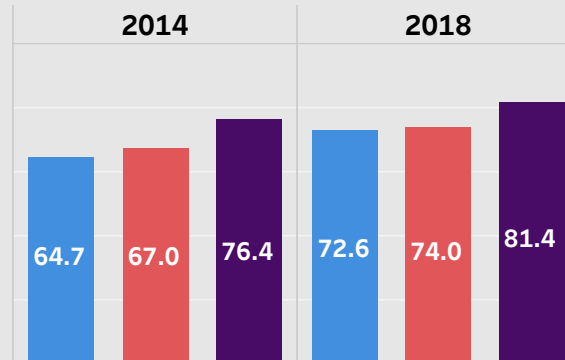
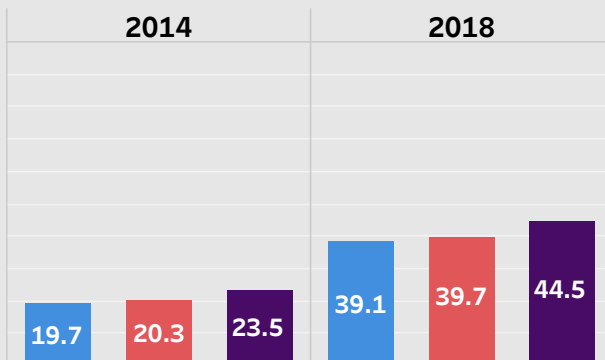
Percentage Point
Change in
Registered and Voted

- All NSLVE Institutions
- NSLVE 4-Year Public Institutions
- University System of Maryland

Voting Rate
(Institutional Level)

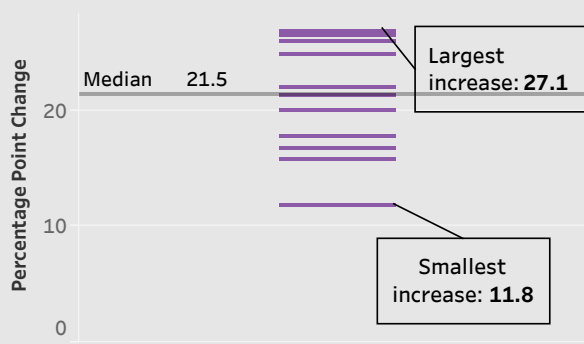
Registration Rate
(Institutional Level)

Registered and Voted
(Institutional Level)

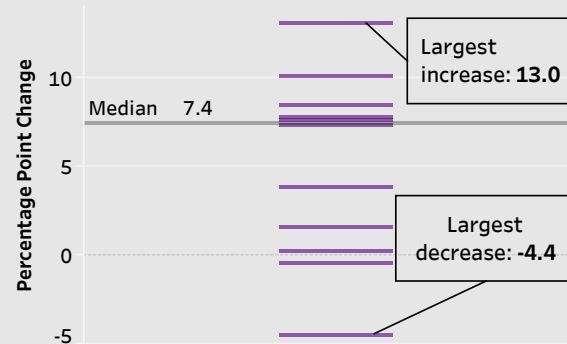


The change below shows individual institution level change for voting rates, registration rates and registered and voted rates

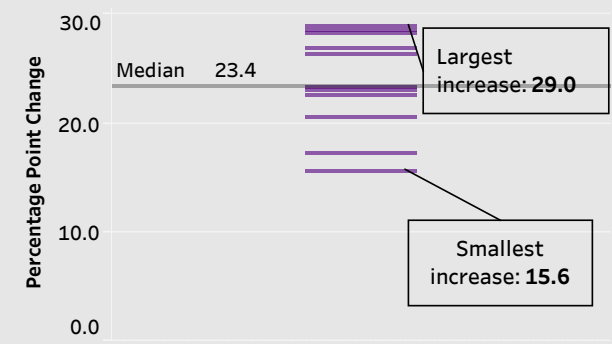
Change in Voting Rate among institutions



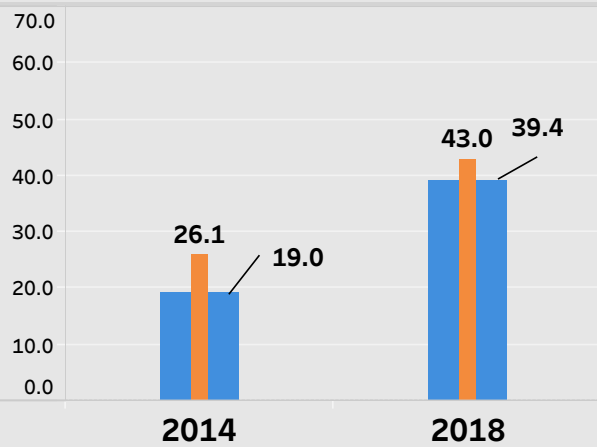
Change in Registration Rate among institutions



Change in Registered and Voted among institutions



Voting Rate of Women
(Student Level)



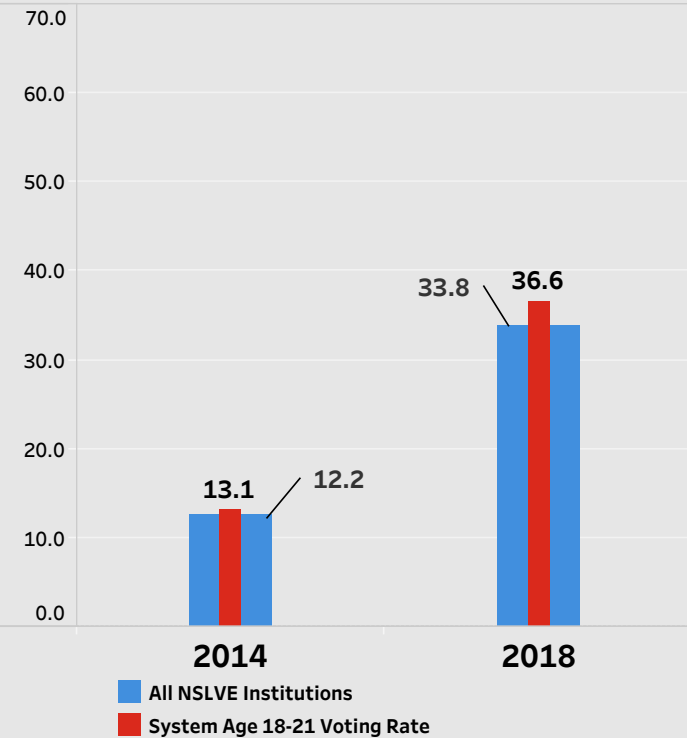
+16.9
Percentage Point
Change in
Voting Rate of Women

All NSLVE Institutions
System Women Voting Rate

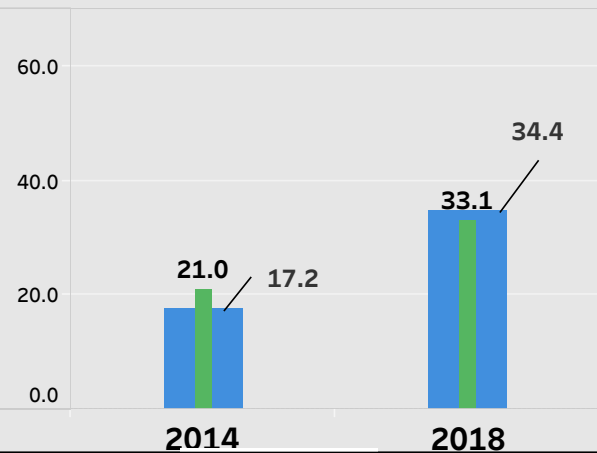
+23.5

Percentage Point
Change in
Voting Rate of Age 18-21

Voting Rate of Age 18-21
(Student Level)



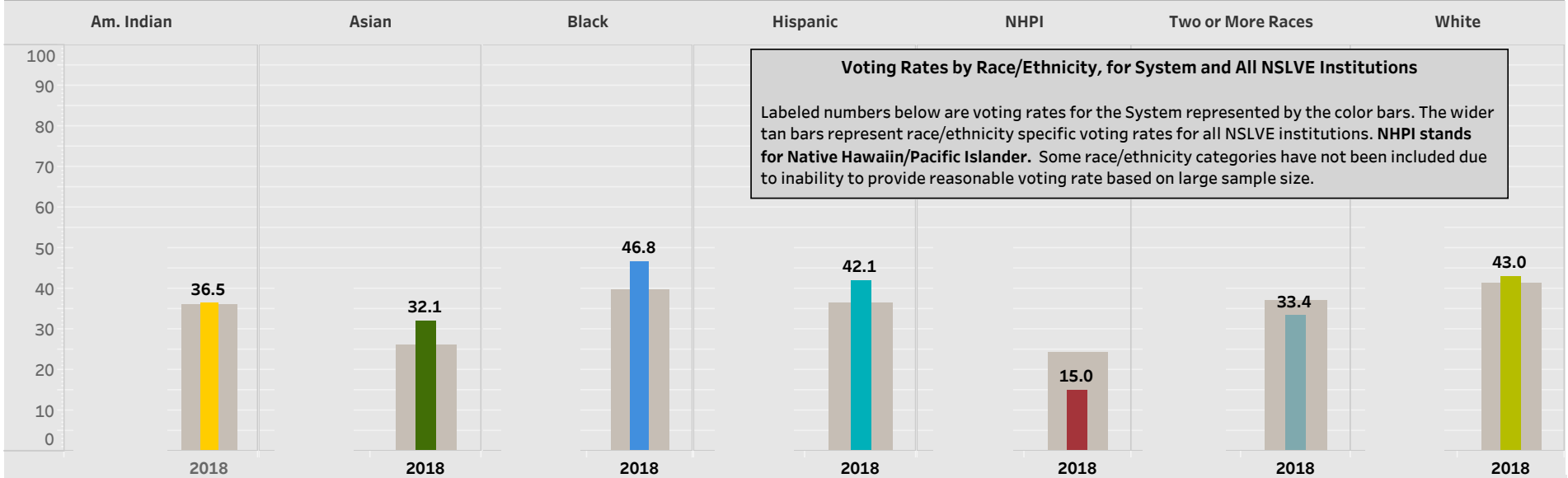
Voting Rate of Men
(Student Level)



+12.1
Percentage Point
Change in
Voting Rate of Men

All NSLVE Institutions
System Men Voting Rate

Gender data is available for 33.7 % of students in 2014 and 63.4 % students in 2018 for the institutions included in this report.

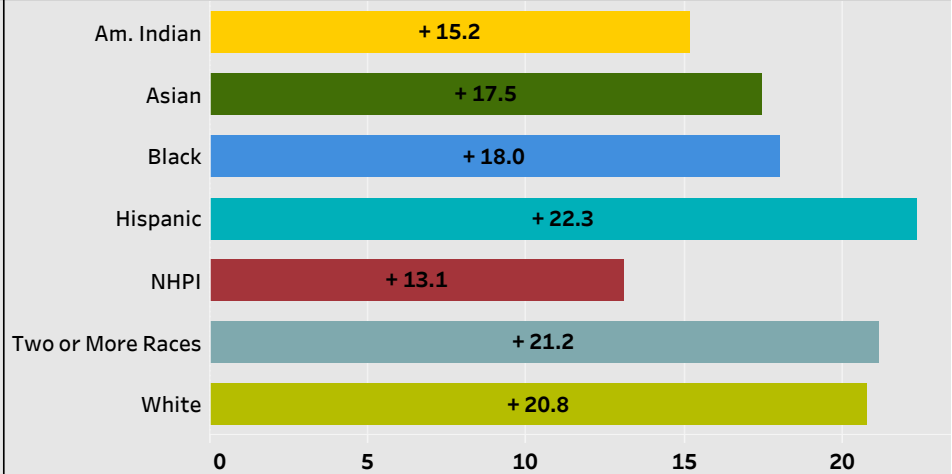


Voting Rates by Race/Ethnicity, for System and All NSLVE Institutions

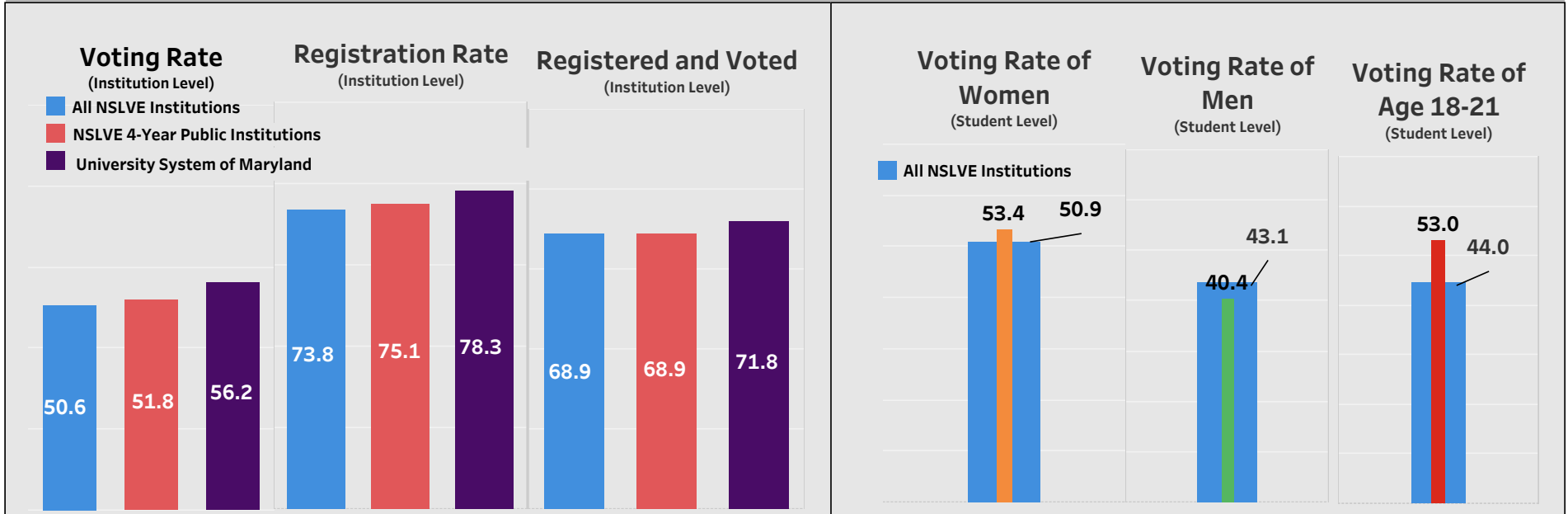
Labeled numbers below are voting rates for the System represented by the color bars. The wider tan bars represent race/ethnicity specific voting rates for all NSLVE institutions. **NHPI stands for Native Hawaiiin/Pacific Islander.** Some race/ethnicity categories have not been included due to inability to provide reasonable voting rate based on large sample size.

Percentage Points Change in Voting Rate in System

Percentage Points Change in Voting Rate- All Institutions



Race/ethnicity data is available for 3.4 % of students in 2014 and 45.6 % of students in 2018.



Gender data is available for 39.0 % of students. Race/ethnicity data is available for 5.9 % of students.

University System of Maryland (Student Level)							All Institutions (Student Level)					
(n) = number eligible							(n) = number eligible					
	Business	Education	Health Professions	Humanities	Social Sciences	STEM	Business	Education	Health Professions	Humanities	Social Sciences	STEM
2014	24.5%	29.0%	24.6%	13.7%	23.6%	18.6%	17.6%	27.5%	18.7%	18.8%	19.2%	15.5%
2018	37.4%	50.9%	42.9%	32.7%	42.8%	35.9%	34.6%	47.0%	37.8%	38.8%	41.1%	34.4%
2014 Highest Voting Rates				2014 Lowest Voting Rates			2014 Highest Voting Rates			2014 Lowest Voting Rates		
Library Science		47.9% (292)	Liberal Arts, Sciences, & Humanities		4.55% (4,177)	Library Science		47.4% (9,837)	Fitness Studies		11.4% (143,552)	
Public Administration		41.8% (2,106)	Fitness Studies		11.57% (968)	Theology & Religious Vocations		31.0% (8,743)	Basic Skills Education		12.7% (4,792)	
Legal Professions		37.8% (1,996)	Architecture		12.05% (332)	Public Administration		29.3% (141,945)	Biological & Biomedical Sciences		13.8% (410,248)	
2018 Highest Voting Rates				2018 Lowest Voting Rates			2018 Highest Voting Rates			2018 Lowest Voting Rates		
Library Science		74.1% (270)	Liberal Arts, Sciences, & Humanities		13.8% (7,105)	Library Science		69.9% (13,009)	Health-Related Knowledge & Skills		28.7% (554)	
Legal Professions		56.9% (1,927)	Transportation		25.8% (62)	History		51.3% (72,928)	Military Science & Leadership		24.4% (2,299)	
Public Administration		55.5% (4,226)	Fitness Studies		30.5% (3,196)	Public Administration		50.9% (169,519)	Basic Skills Education		15.2% (5,359)	
Largest Increases				Largest Decreases			Largest Increases			Largest Decreases		
Architecture		30.4%.p.	English Language & Litera..		27.3%.p.	Visual & Performing Arts		26.1%.p.	Communication & Journali..		24.9%.p.	
Family and Consumer/Human ..		26.2%.p.										
Library Science		26.1%.p.										

Fields of study data is available for 55.3 % students in 2014 and 99.6 % students in 2018 for the institutions included in this report page. %.p. above stands for percentage points.

Complete List of Fields of Study in NSLVE

Agriculture	Culinary Services
Architecture	Fitness Studies
Area, Ethnic, Gender Studies	Library Science
Basic Skills Education	Mathematics & Statistics
Biological & Biomedical Sciences	Mechanic & Repair
Business, Management, & Marketing	Military Science & Leadership
Communication & Journalism	Multi/Interdisciplinary Studies
Communications Technologies	Natural Resources
Computer & Information Sciences	Other
Construction Trades	Philosophy
Education	Physical Sciences
Engineering	Precision Production
English Language & Literature	Psychology
Family and Consumer/Human Sciences	Public Administration
Foreign Languages & Literatures	Science Technologies/Technicians
Health Profession	Social Sciences
Health-Related Knowledge & Skills	Theology & Religious Vocations
History	Transportation
Law Enforcement	Unknown
Legal Professions	Visual & Performing Arts
Liberal Arts, Sciences, & Humanities	
Parks and Recreational Activities	

Part of Tufts University's Jonathan M. Tisch College of Civic Life, the Institute for Democracy & Higher Education (IDHE) is an applied research center focused on college and university student political learning and engagement in democracy. IDHE researchers study student voting, equity, campus conditions for political learning, discourse, participation, and agency for underrepresented and marginalized students. We accomplish our goals by conducting research, producing practical resources, supporting institutions and the higher education community, and advocacy.

IDHE's signature initiative, the National Study of Learning, Voting, and Engagement (NSLVE), is a service to colleges and universities that provides participating institutions with tailored reports of their students' voting rates. Launched in 2013 with 250 campuses, the study now serves more than 1,000 institutions in all 50 states and the District of Columbia. In addition to NSLVE, IDHE researches learning environments and practices of politically engaged campuses. From this line of study came *Election Imperatives*, a 2018 national report that offered practical recommendations for campus civic learning. IDHE is now higher education's leading source of data and support for college student political learning and participation.

About the Report

Reflecting the best available data for a specific set of institutions, this report provides estimated registration and voting rates based on students who were age-eligible to vote at the time of the election attending those institutions. We use enrollment records submitted by these institutions to the National Student Clearinghouse (FERPA-blocked records excluded) merged with publicly available voting files collected by Catalist. As with nearly all voting rate calculations, some ineligible voters are difficult to parse out, such as international or undocumented students. We do, however, adjust institutional level voting rates by deducting an estimated number of students who are nonresident aliens based on submissions to the Integrated Postsecondary Education Data System (IPEDS). For more information, visit our FAQ page: <https://idhe.tufts.edu/nslve/frequently-asked-questions>.

What to do next:

Use this data to help leaders, faculty, and students at your university system to catalyze change by improving their climates for political learning and participation. Refer to our report, "**Election Imperatives: Ten Recommendations to Increase College Student Voting and Improve Political Learning and Engagement in Democracy**" and our national report, "**Democracy Counts 2018: Increased Student and Institutional Engagement**".

Read **Democracy Counts 2018**, IDHE's national NSLVE report on the 2018 midterm election here: <https://idhe.tufts.edu/2018data>

Read **Election Imperatives** here: <https://idhe.tufts.edu/electionimperatives>

Partner with IDHE:

We are available to work with you to evaluate and improve student political learning, discourse, and participation. Contact us for in-person support, webinars, workshops and assessment at IDHE@tufts.edu.